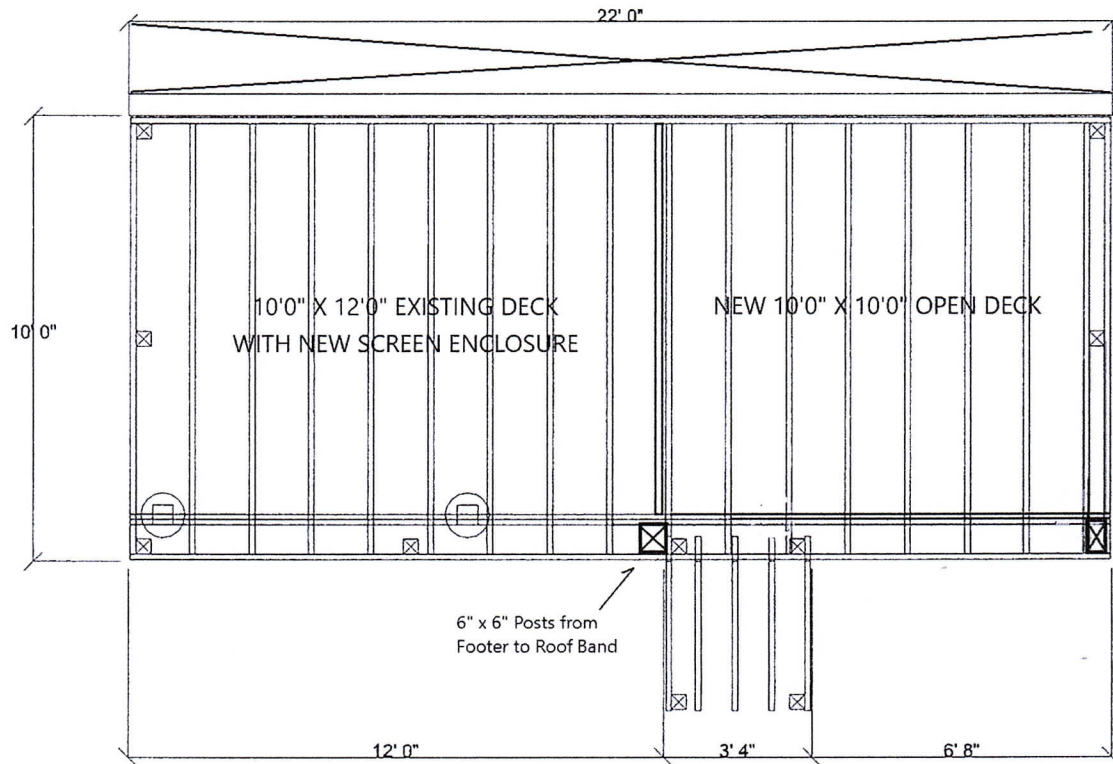


PERMIT PAGE



STRUCTURAL INFORMATION

Elevation from Deck Surface to Grade: 36"

Footer Depth: 22" Live Load: 40 psf Dead Load 10 psf

2" x 10" Joist Span: 117" @ 16 o.c.

10' 0" x 12' 0" Enclosure: 6" x 6" Posts From Footer Through Rim Joist To Roof Band

10' 0" x 10' 0" Open Deck: 6" x 6" Posts From Footer Through Rim Joist To Rail Cap

2" x 4" For Entry Framing to Screen Enclosure

Decking: 5/4" x 6" Wood

Railing: 42" Height with 2" x 2" Balusters

5/8" Galvanized Carriage Bolts To Secure Posts To Rim Joists, Roof Band

All Lumber: Treated SYP