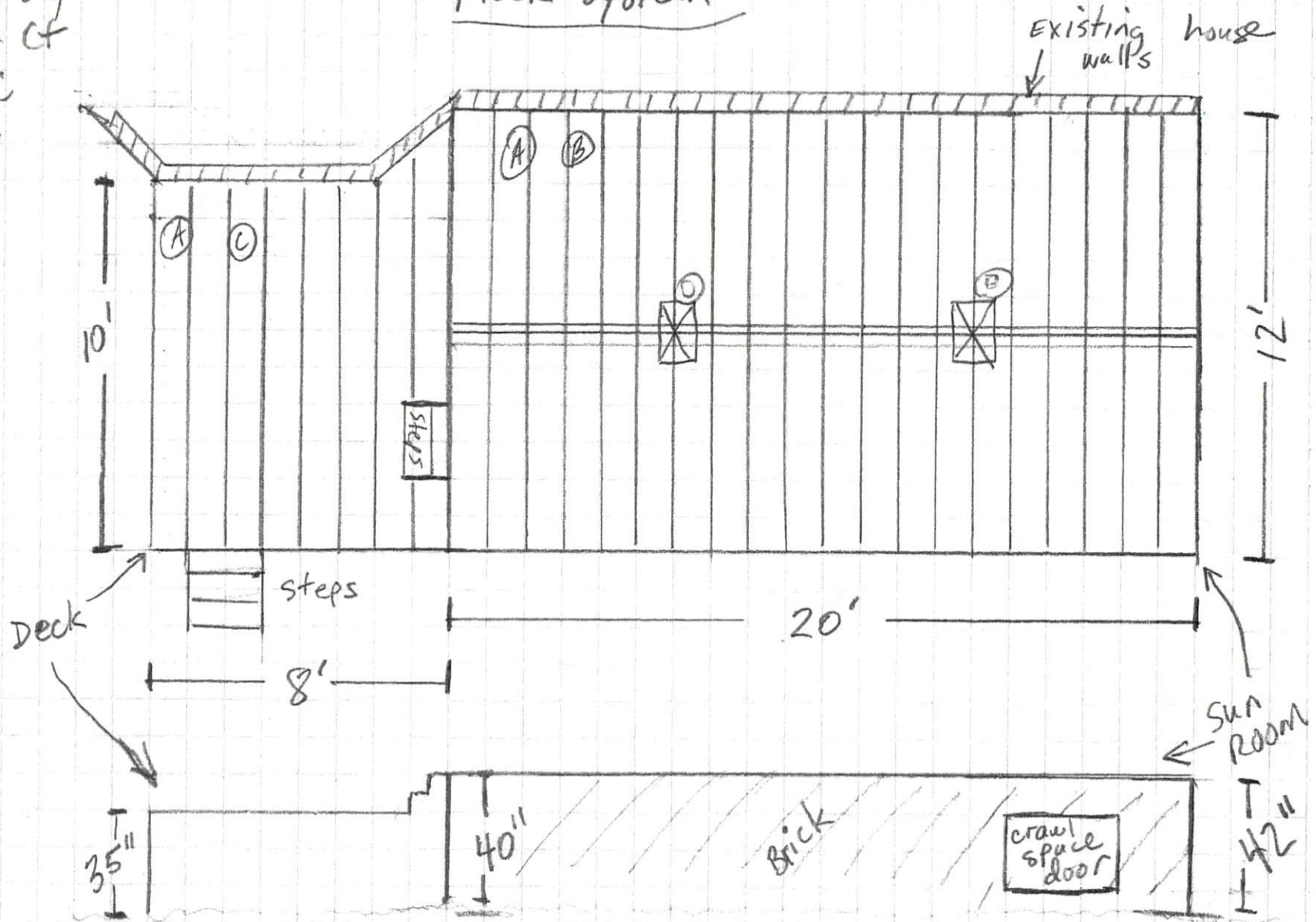


Craig Hardy
 52 Monarch Ct
 Cameron, NC
 28326

FLOOR SYSTEM



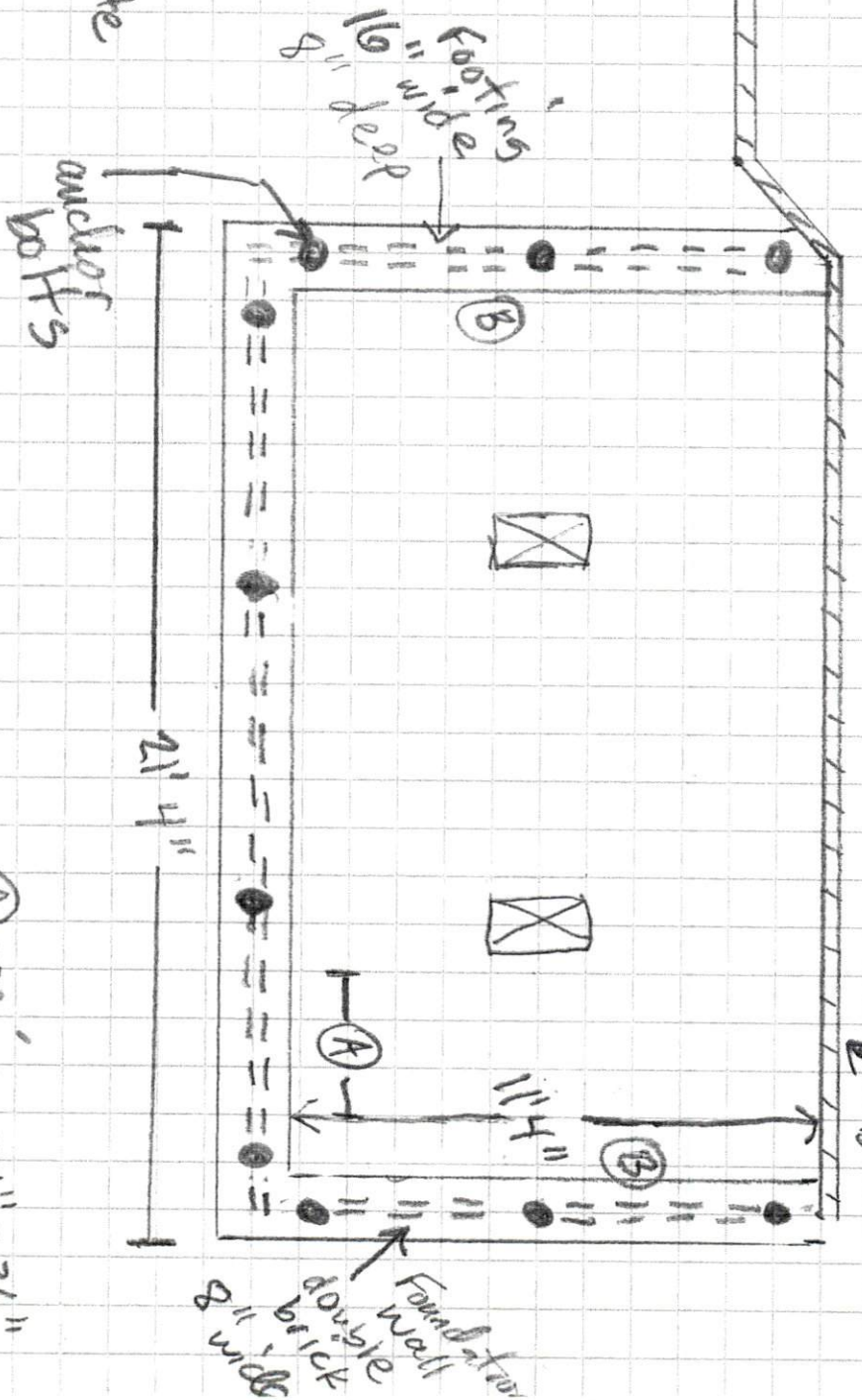
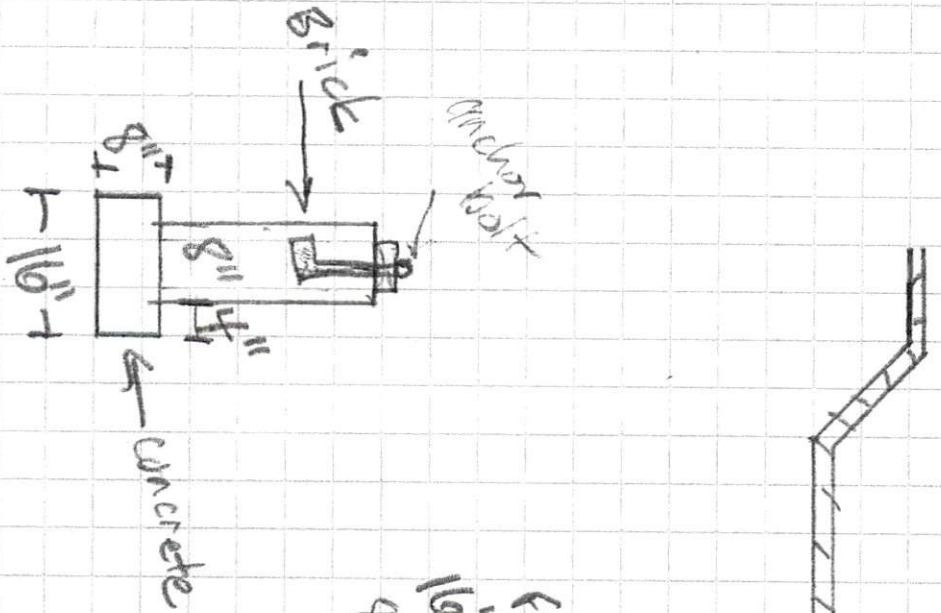
$\frac{1}{4}'' = 1'$

- Ⓐ floor joists 16" OC
- Ⓑ sun room joists 2x10
- Ⓒ deck joists 2x6
- Ⓓ 2 columns 8" x 16"

Ground
 looking at
 house

1/4" = 1'

Foundation Plan

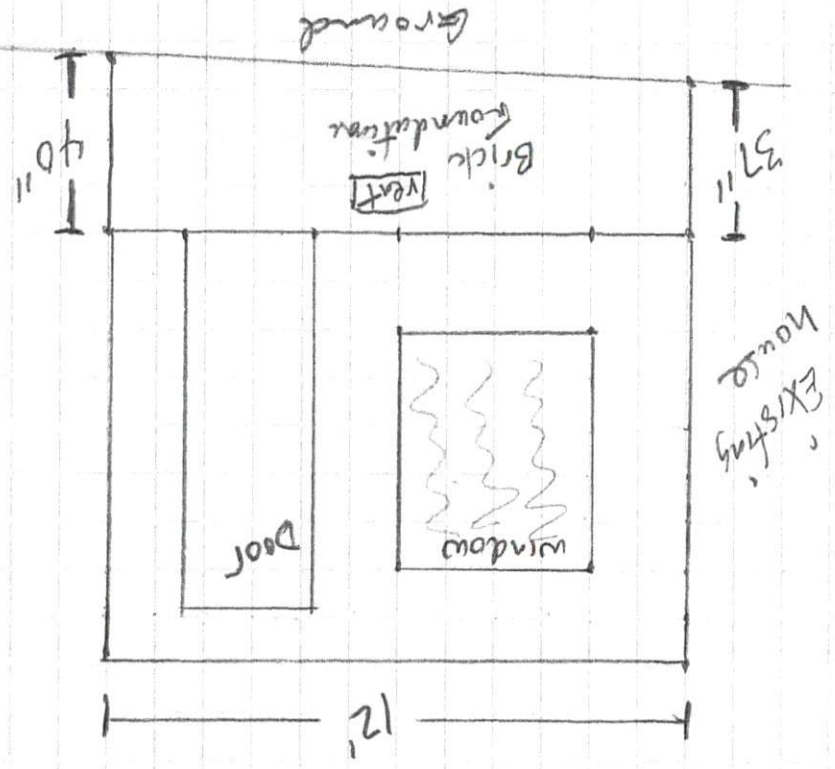
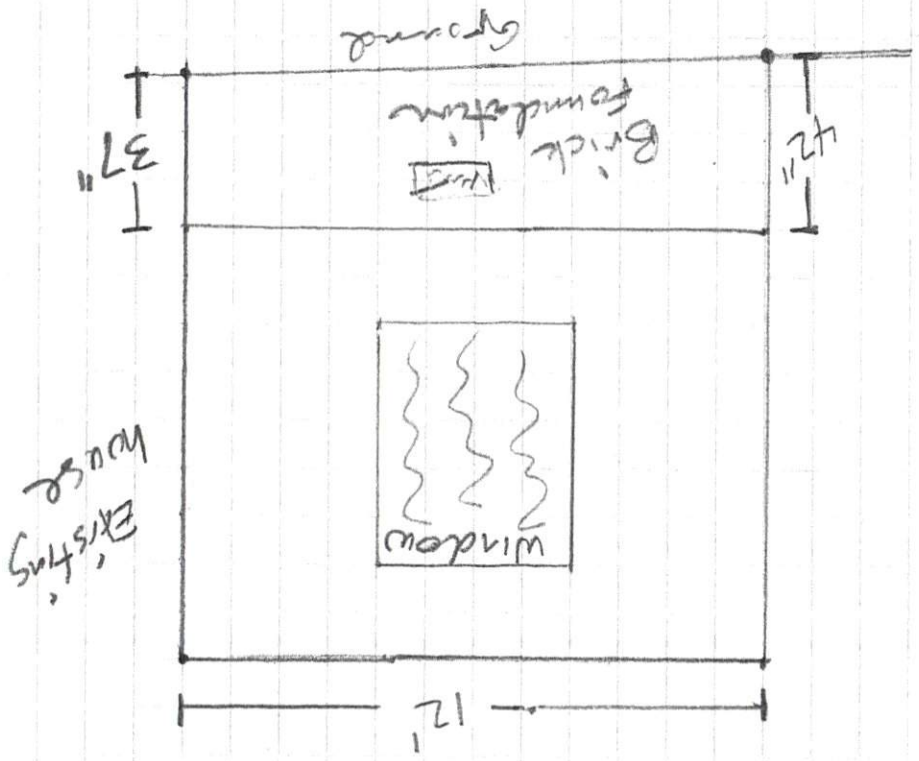


- (A) opening 24" x 36" for crawl space door
- (B) 16" x 8" vent open

Craig Hardy of
52 Monarch Ct
Cameron NC 28326

Craig Hardy CT
52 Monarch Ct
Cameron NC 28326

1/4" = 1'

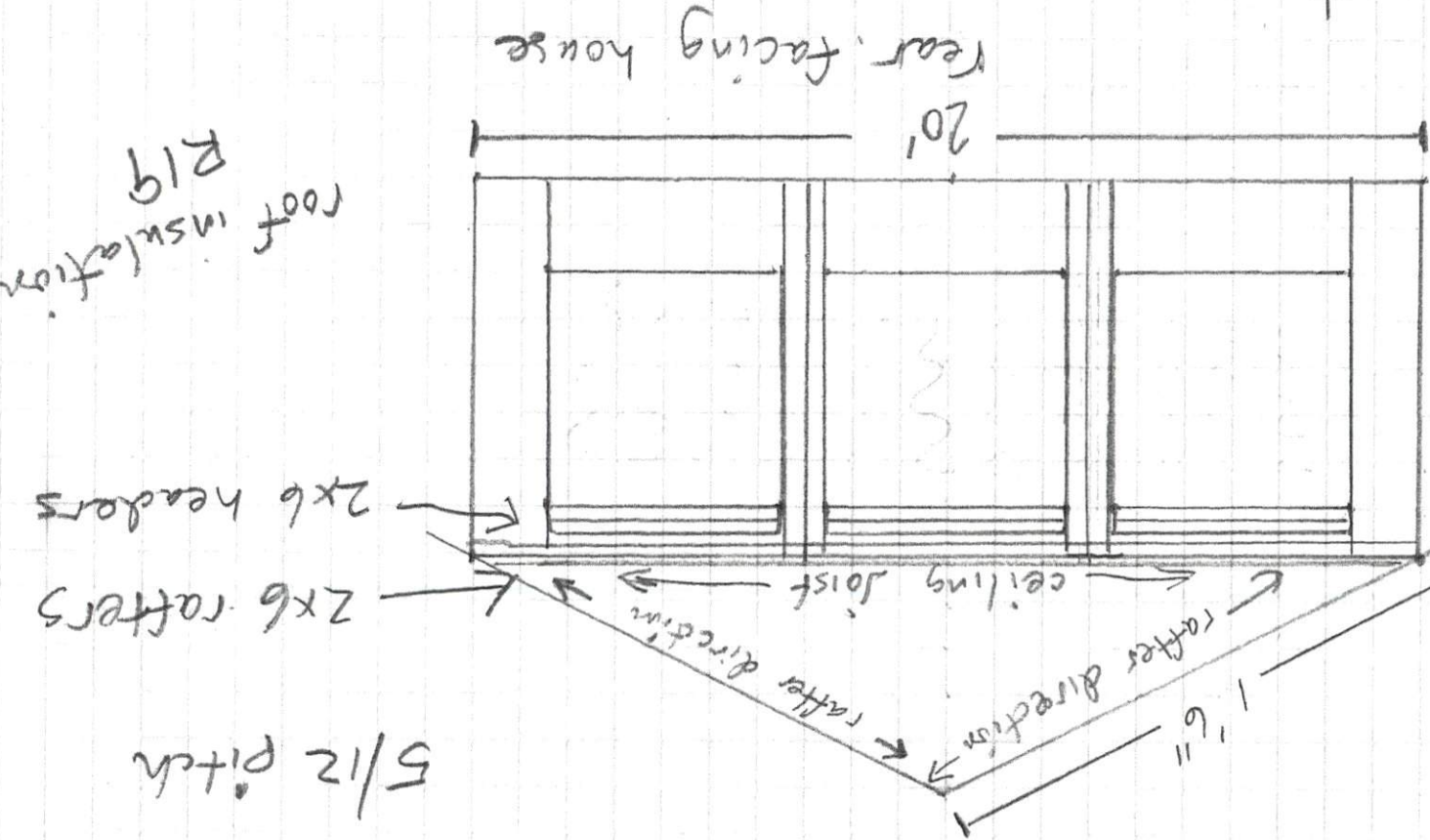
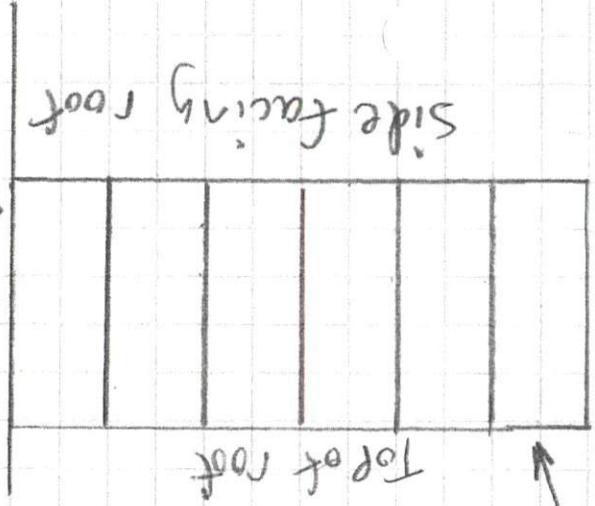


⊛ Front view on
Floor system drawing

Elevation
Side Views

Craig Hardy
52 Monarch Ct
Cameron, NC
28326

Existing house
2x6 rafters
24" OC



Ridge beam
2x8x13'6"

8'6"

5'6"

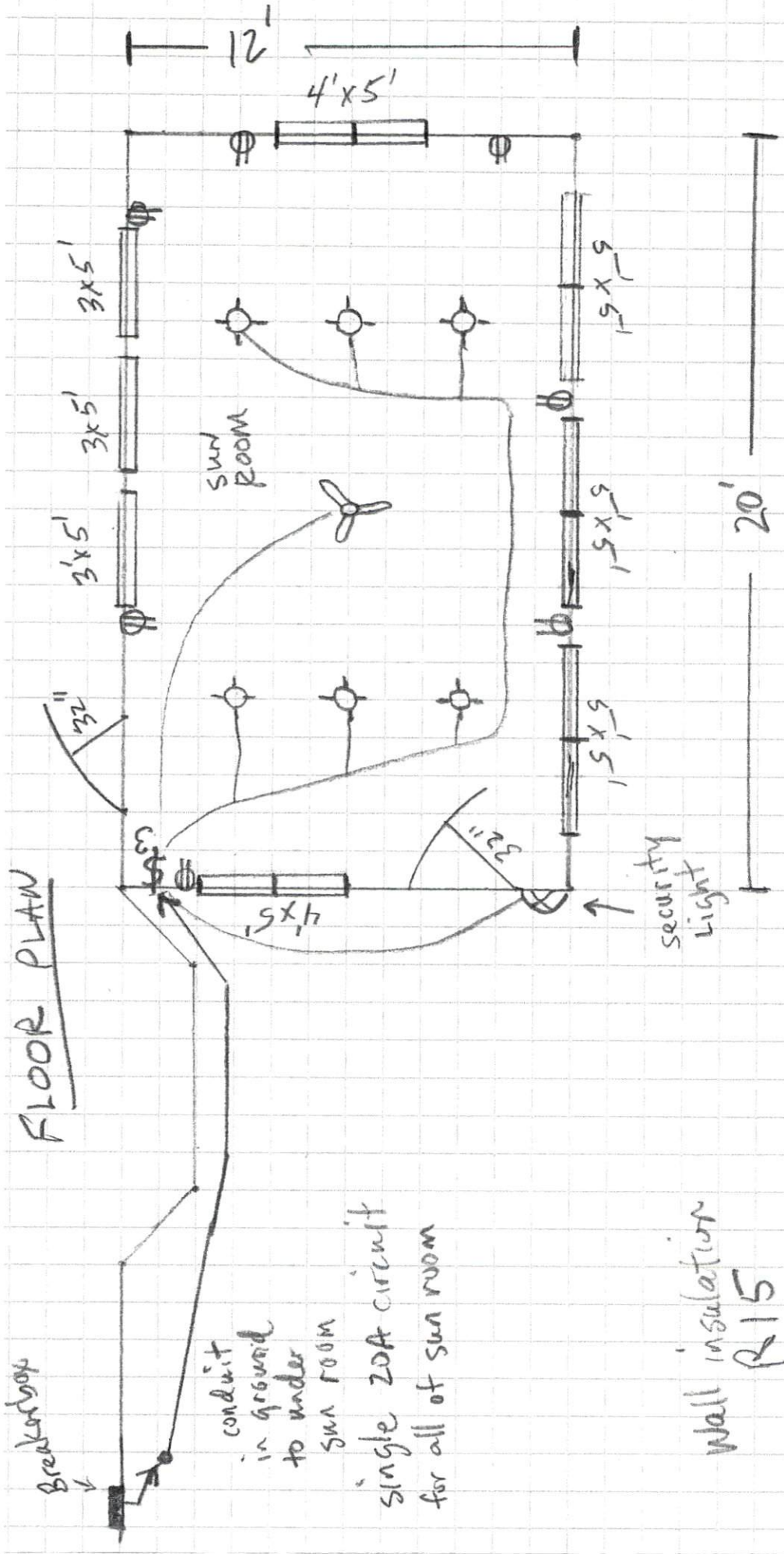
1'6"

1/4" = 1'

(*)

Roof Plan

FLOOR PLAN



Breaker box

conduit
in ground
to under
sun room

single 20A circuit
for all of sun room

Wall insulation
R15

walls 2x4 lumber
16" OC

1/4" = 1'

Craig Hardy
52 Monarch Ct
Cameron, NC 28326