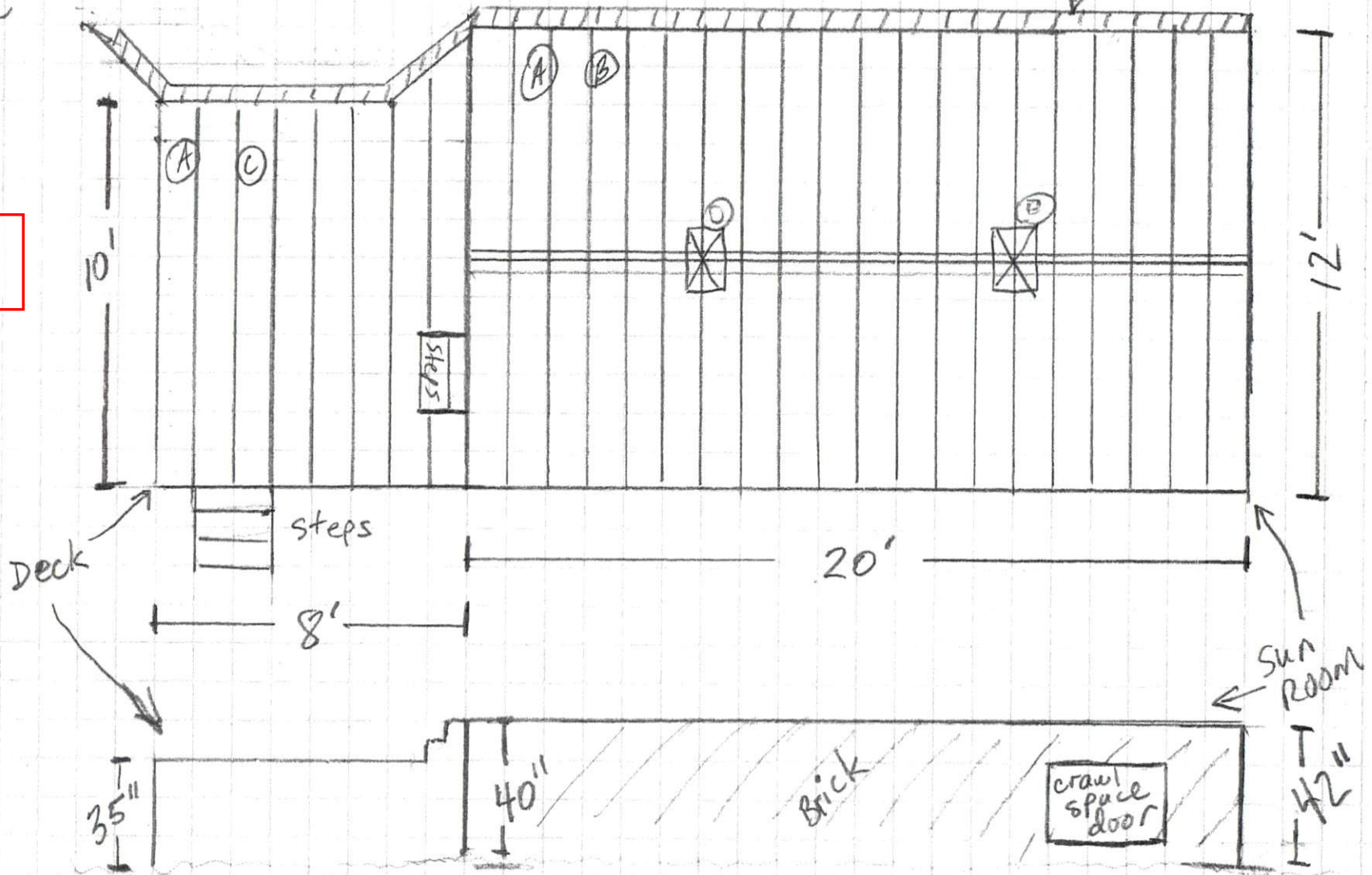


Craig Hardy  
 52 Monarch Ct  
 Cameron, NC  
 28326

FLOOR SYSTEM

Existing walls house  
 ↓



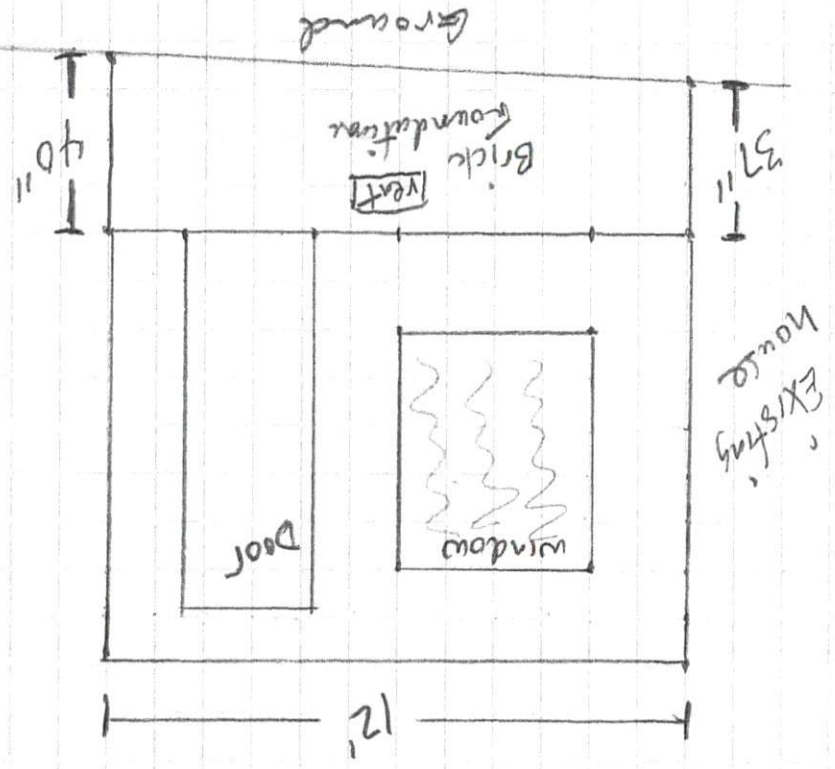
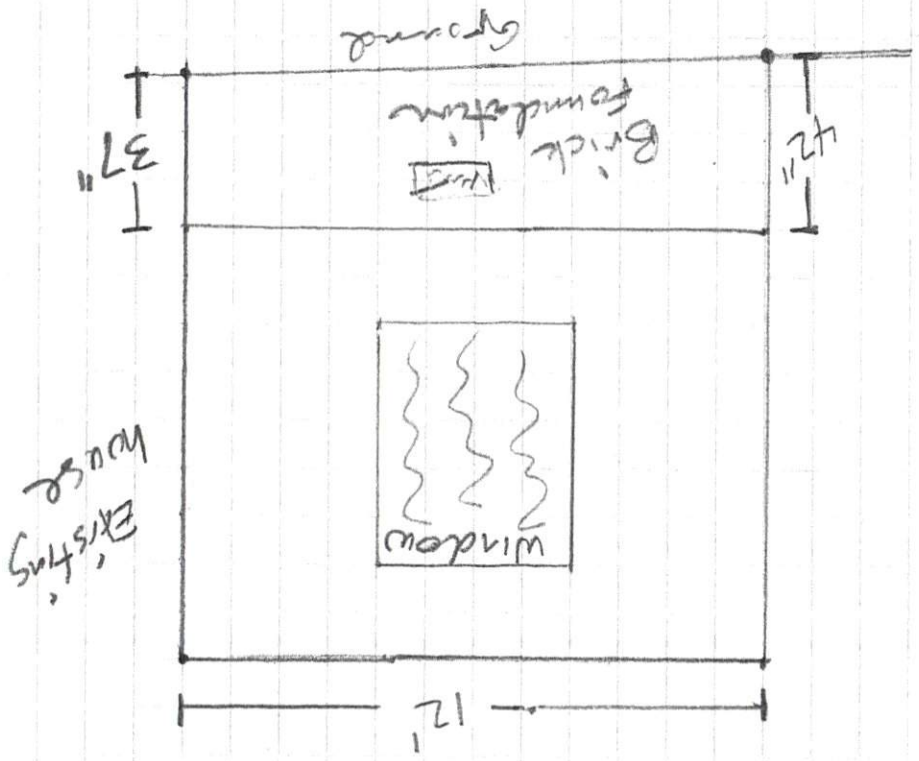
1/4" = 1'

- Ⓐ floor joists 16" OC
- Ⓑ Sun room joists 2x10
- Ⓒ deck joists 2x6
- Ⓓ 2 columns 8" x 16"



Craig Hardy CT  
52 Monarch Ct  
Cameron NC 28326

1/4" = 1'

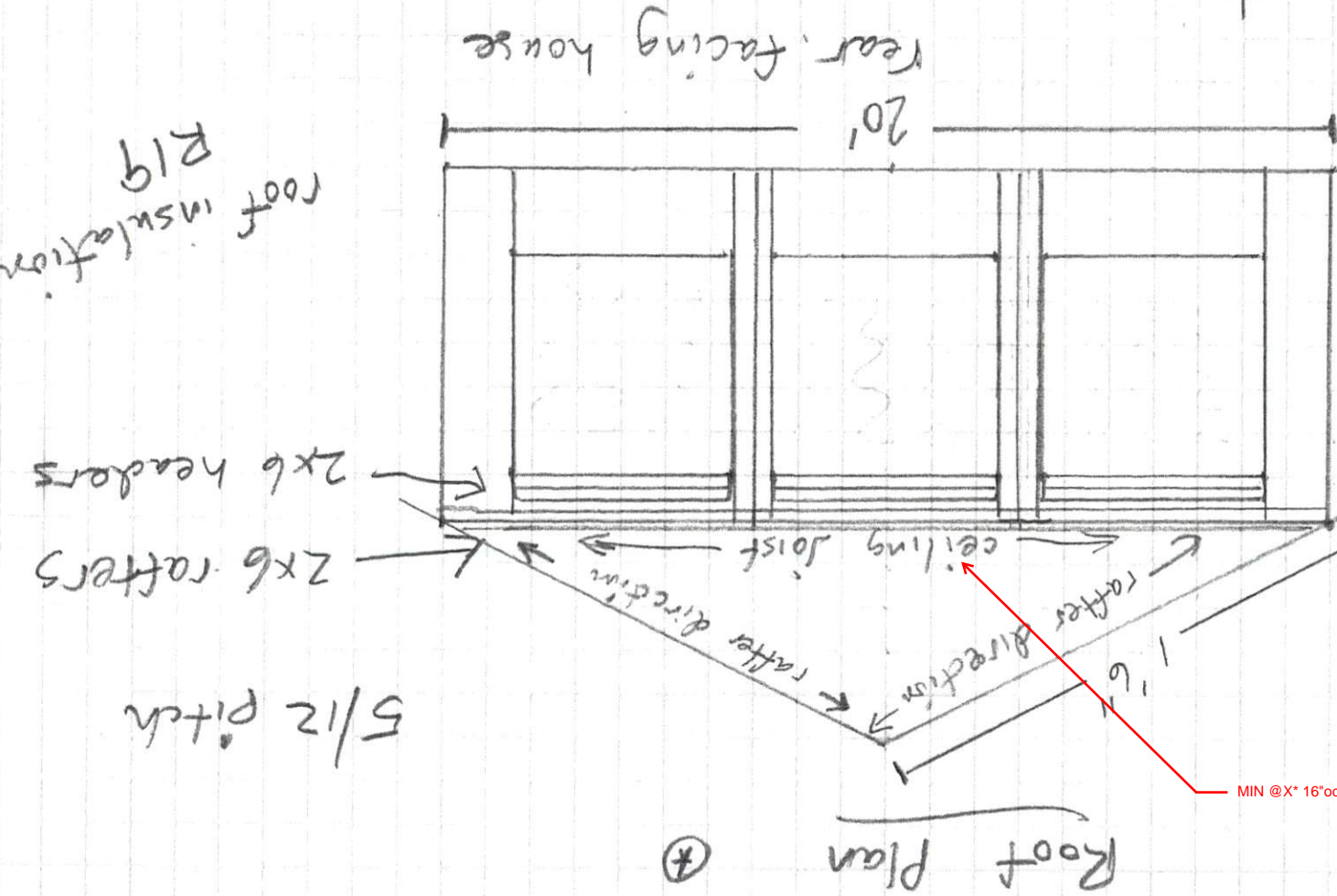
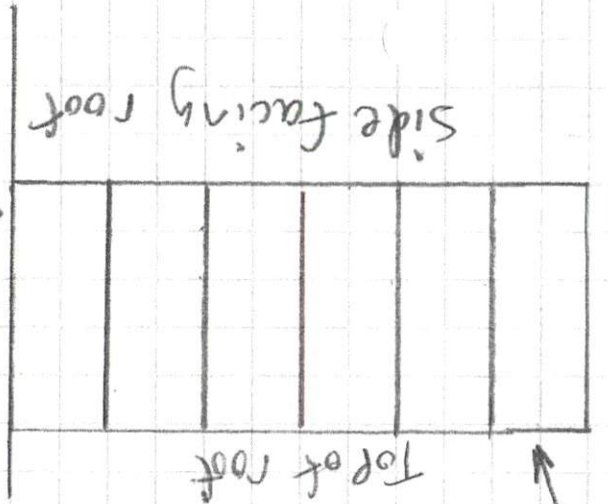


⊛ Front view on  
Floor system drawing

Elevation  
Side Views

Craig Hardy  
52 Monarch Ct  
Cameron, NC  
28326

Existing house  
2x6 rafters  
24" OC



Ridge beam  
2x8x13'6"

8'6"

5'6"

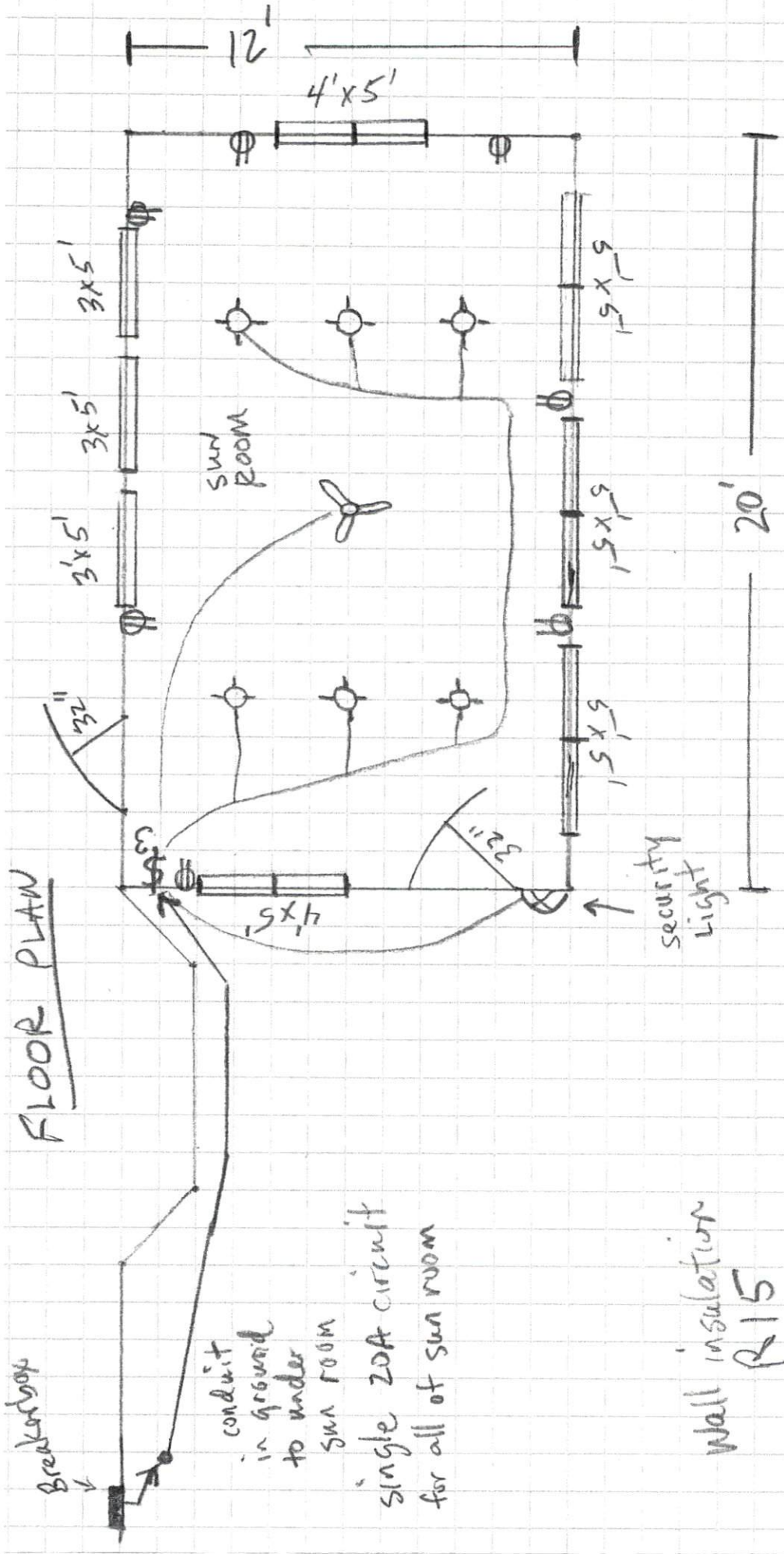
MIN @ X\*16"oc

1/4" = 1'

⊕

Roof Plan

# FLOOR PLAN



Craig Hardy  
 52 Monarch Ct  
 Cameron, NC 28326