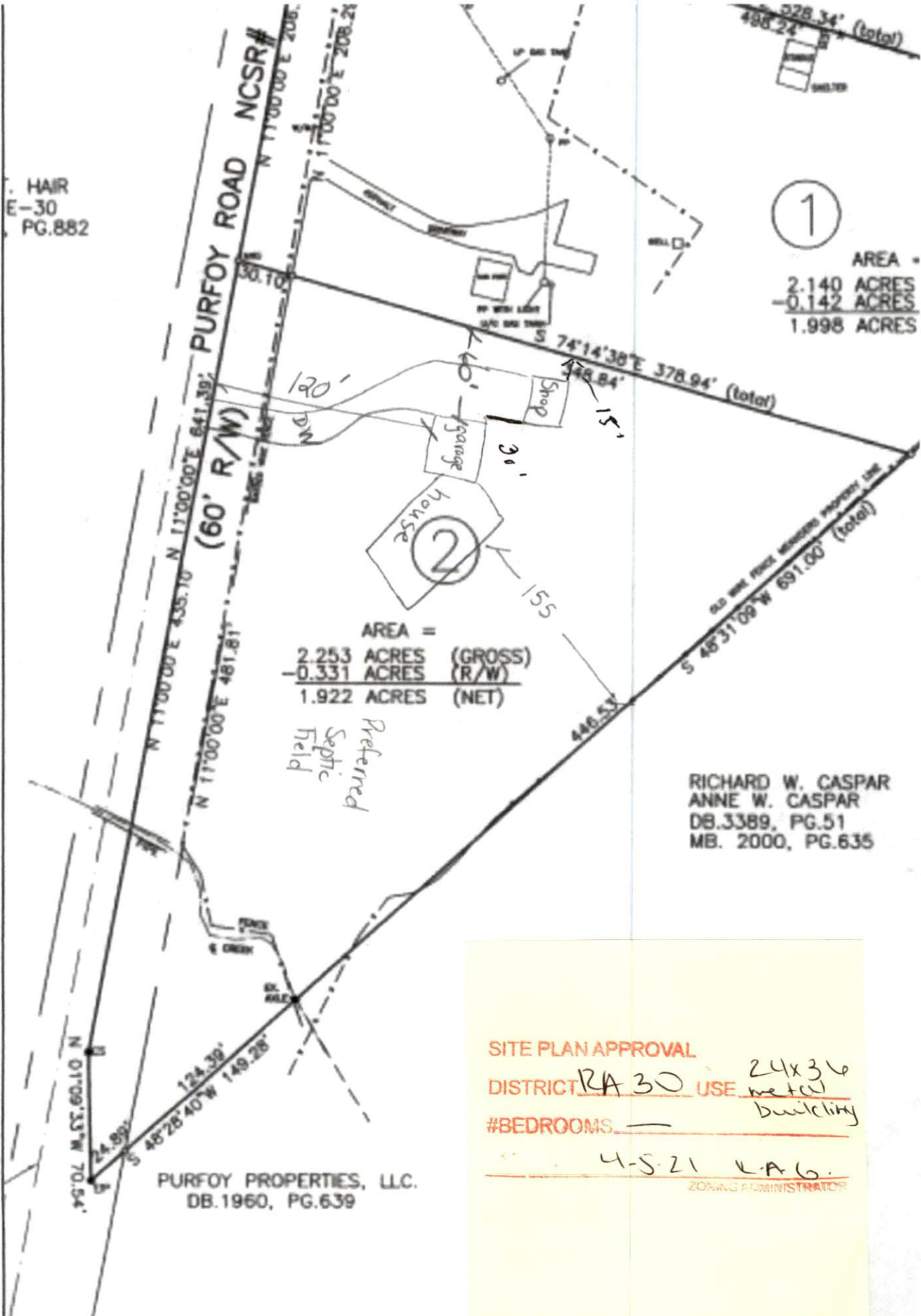


HAIR
E-30
PG.882



1

AREA =
2.140 ACRES
- 0.142 ACRES
1.998 ACRES



AREA =
2.253 ACRES (GROSS)
- 0.331 ACRES (R/W)
1.922 ACRES (NET)

Preferred
Septic
Field

RICHARD W. CASPAR
ANNE W. CASPAR
DB.3389, PG.51
MB. 2000, PG.635

PURFOY PROPERTIES, LLC.
DB.1960, PG.639

SITE PLAN APPROVAL
DISTRICT RA 30 USE 24x36 metal building
#BEDROOMS —
4-5-21 K.A.G.
ZONING ADMINISTRATOR

