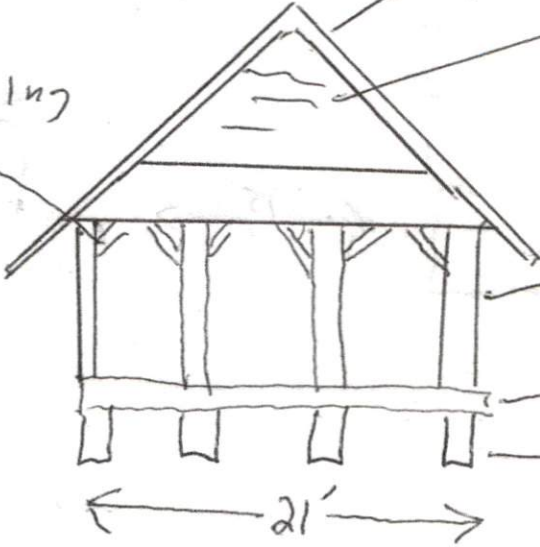


6" x 6" Bracing

30 year shingles match house

Siding on A Frame portion matching house



6" x 6" Posts

4 1/2" slab

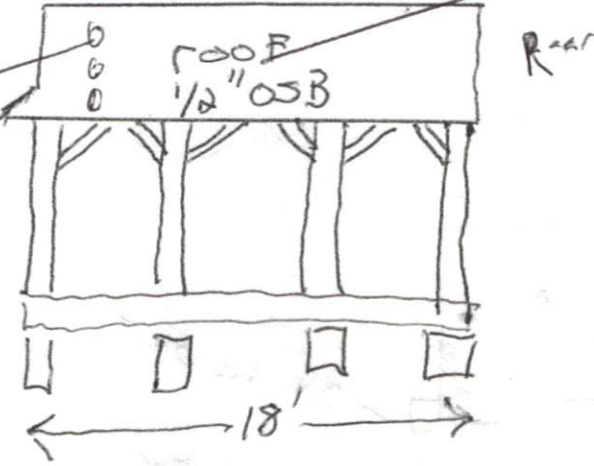
footings are additional 36"

21'

Ceiling Fan

Frost

Three High Hats

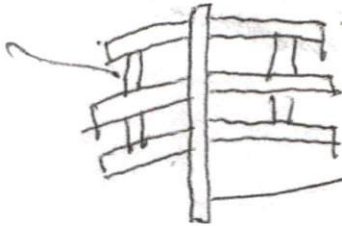


TOP VIEW

2 x 8 Roof Rafters Placed 16" OC

2" x 12" Center Beam

Support Stingers



Collar Tie  
Birds mouth

Double 2" x 6" Header

(Continue on Back ->)