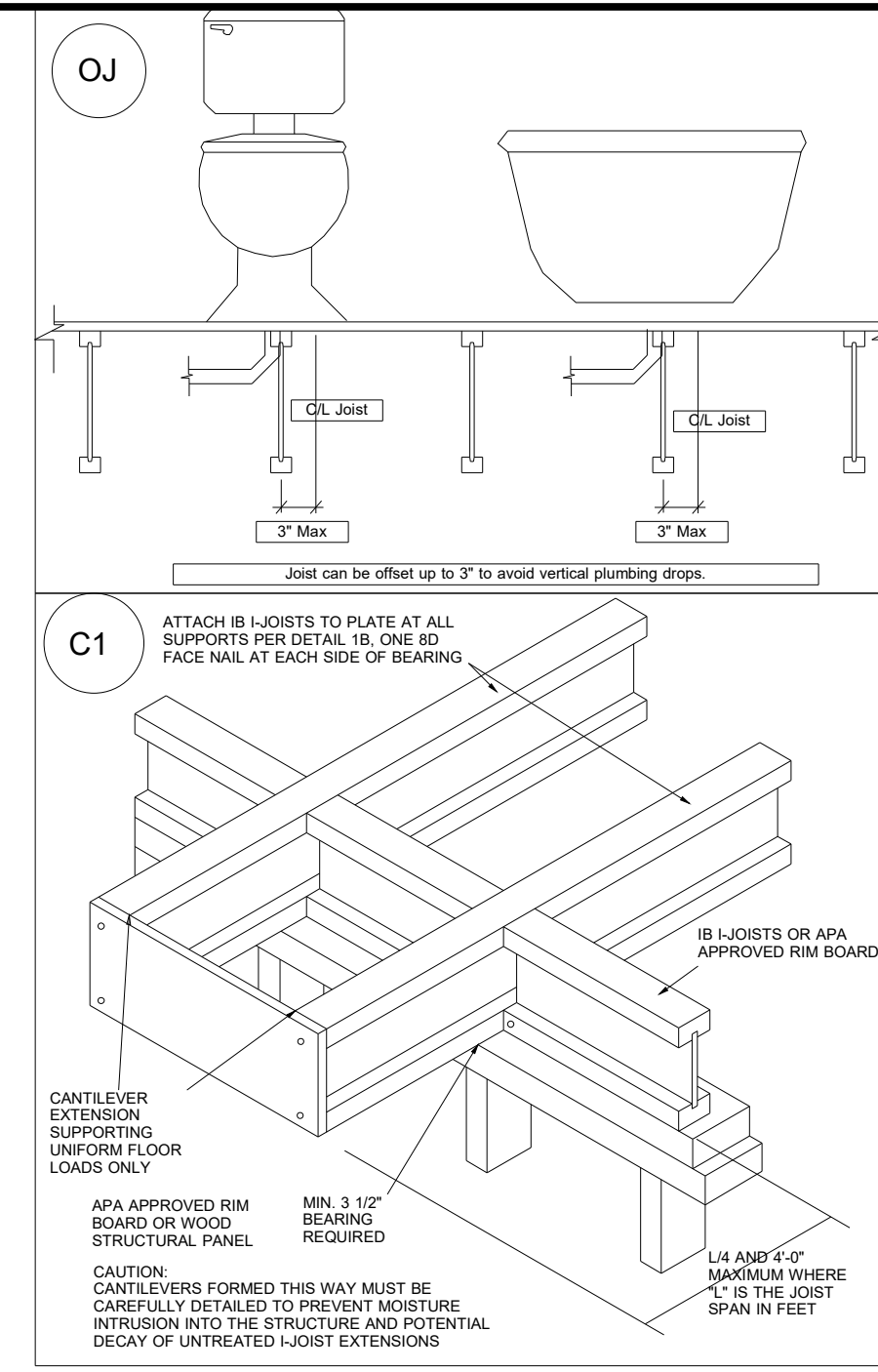


| Products | | | | | |
|----------|--------|--------------------------------|-------|---------|----------|
| PlotID | Length | Product | Plies | Net Qty | Fab Type |
| FB8-3 | 26' 0" | 2.0 RigidLam DF LVL 1-3/4 x 16 | 3 | 3 | FF |
| FB10-3 | 16' 0" | 2.0 RigidLam DF LVL 1-3/4 x 16 | 3 | 3 | FF |
| FB9-3 | 16' 0" | 2.0 RigidLam DF LVL 1-3/4 x 16 | 3 | 3 | FF |

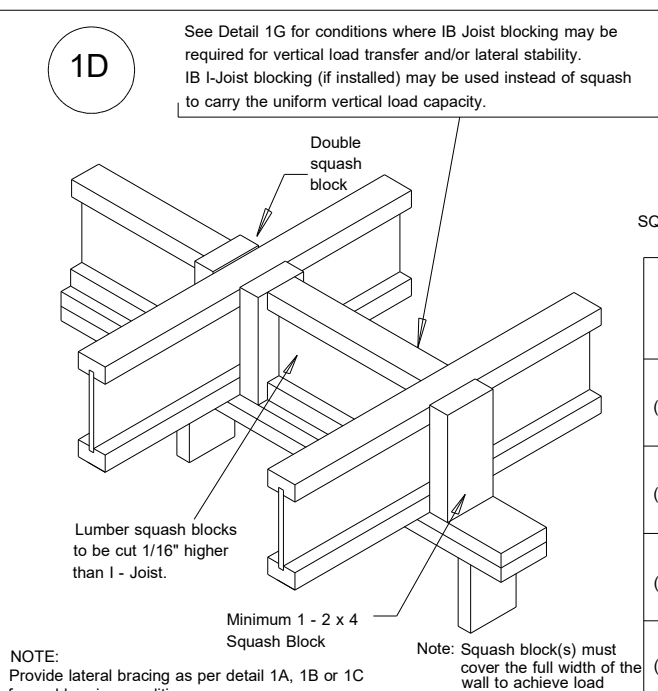
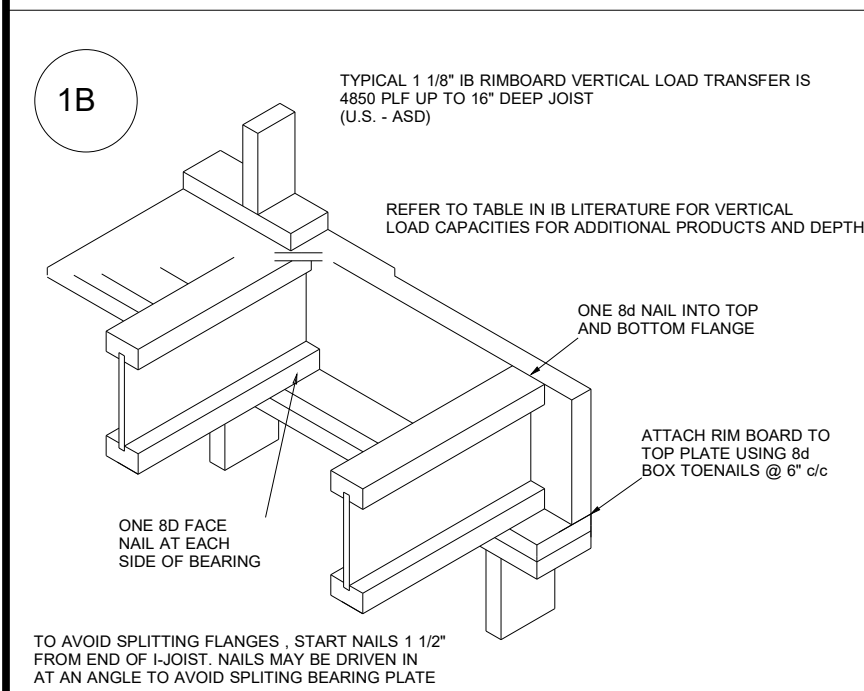
| Connector Summary | | |
|-------------------|---------|-------------|
| Qty | Manuf | Product |
| 2 | Simpson | HGUS5.50/14 |



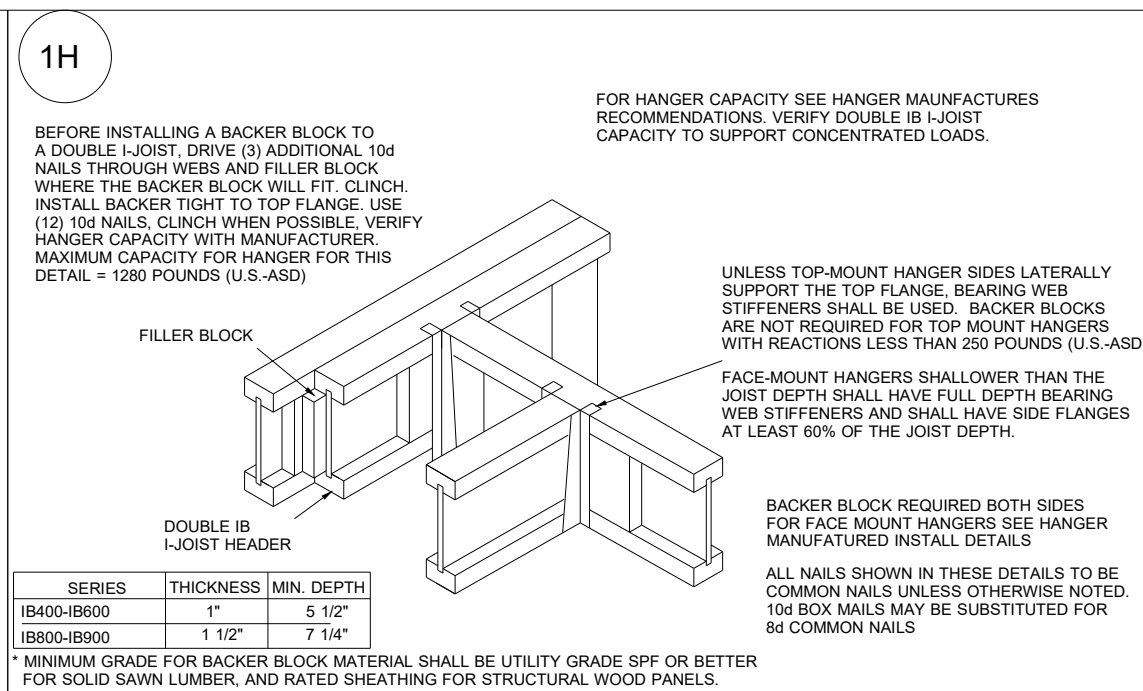
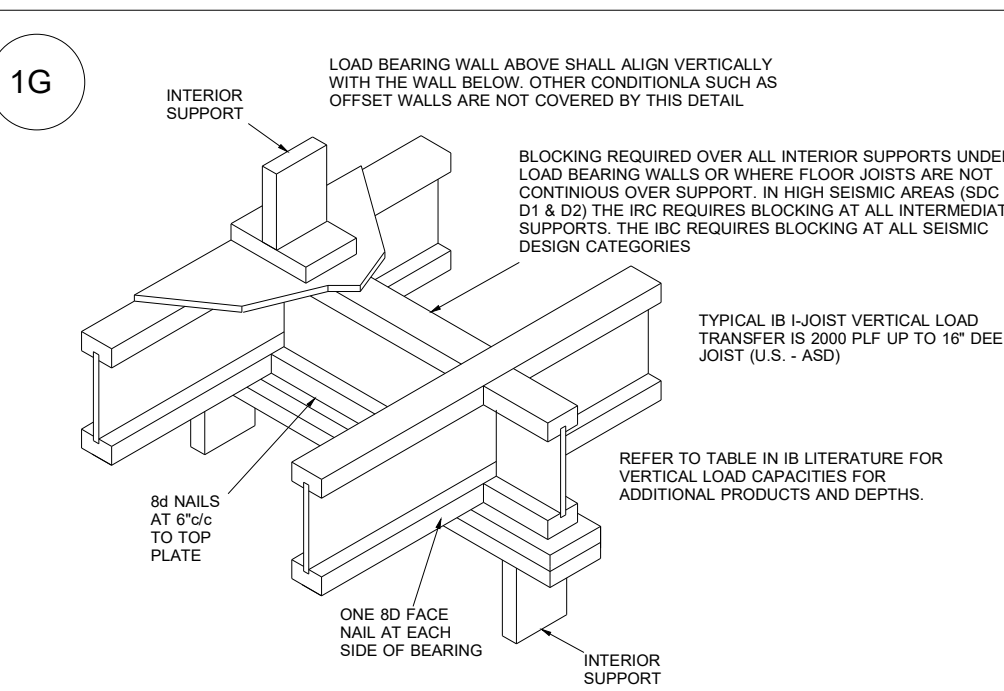
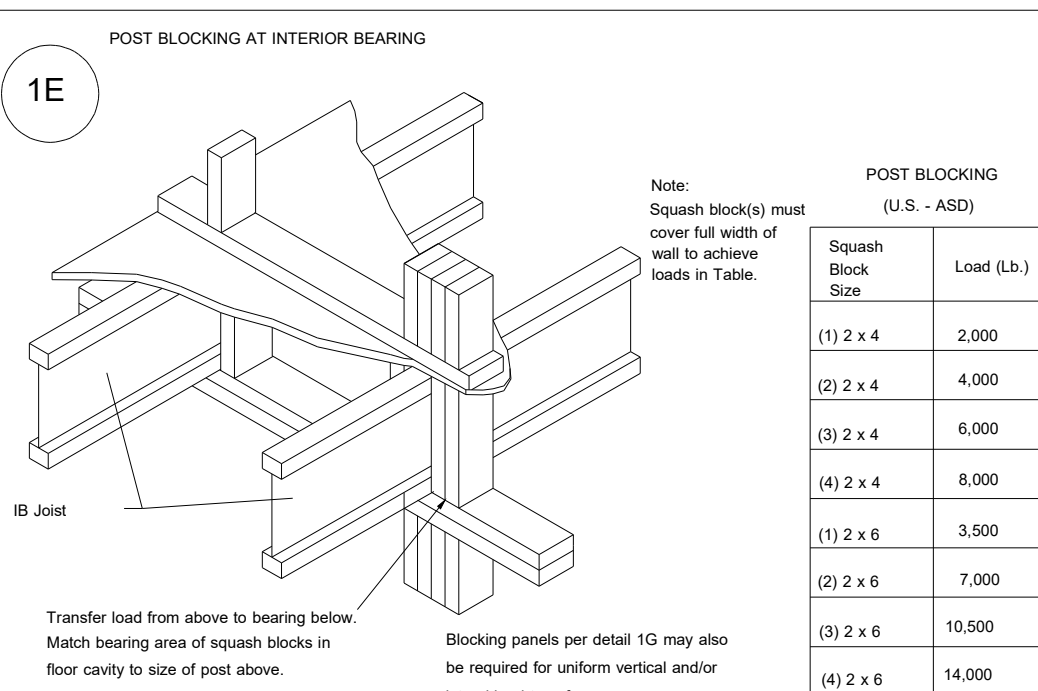
BLOCK SOLID UNDER ALL POST /POINT LOADS FROM ABOVE - TYPICAL AT ALL LOCATIONS

2nd Floor LVL

DRAWING SCALE : NTS



| SQUASH BLOCKS FOR VERTICAL WALL LOAD (U.S. - ASD) | | | |
|---|-----------------------------|---|---------------------------------|
| Squash Block Size | I-Joist Spacing (Inch o.c.) | Vertical Uniform Wall Load Capacity (PLF) | Vertical Load Capacity (pounds) |
| (1) 2 x 4 | 12 | 2000 | 2000 |
| | 16 | 1500 | |
| | 19.2 | 1350 | |
| | 24 | 1000 | |
| (2) 2 x 4 | 12 | 4000 | 4000 |
| | 16 | 3000 | |
| | 19.2 | 2500 | |
| | 24 | 2000 | |
| (1) 2 x 6 | 12 | 3500 | 3500 |
| | 16 | 2625 | |
| | 19.2 | 2188 | |
| | 24 | 1750 | |
| (2) 2 x 6 | 12 | 7000 | 7000 |
| | 16 | 5250 | |
| | 19.2 | 4375 | |
| | 24 | 3500 | |



BBO = Beam by Others
PBO = Post by Others
GBO = Girder by Others
J = I-Joist
FB = Flush Beam
DB = Dropped Beam
BP = Blocking Panels
SB = Squash Blocks



Mabus Farm & GC LLC
1125 Cypress (Marshall)
2nd FLOOR LVL PLACEMENT PLAN

| REVISIONS | |
|-----------|-----|
| DATE | BY |
| 11.11.21 | RKW |
| | |
| | |
| | |
| | |
| | |

PROJECT NUMBER
21090035
 SHEET NUMBER
1 / 1