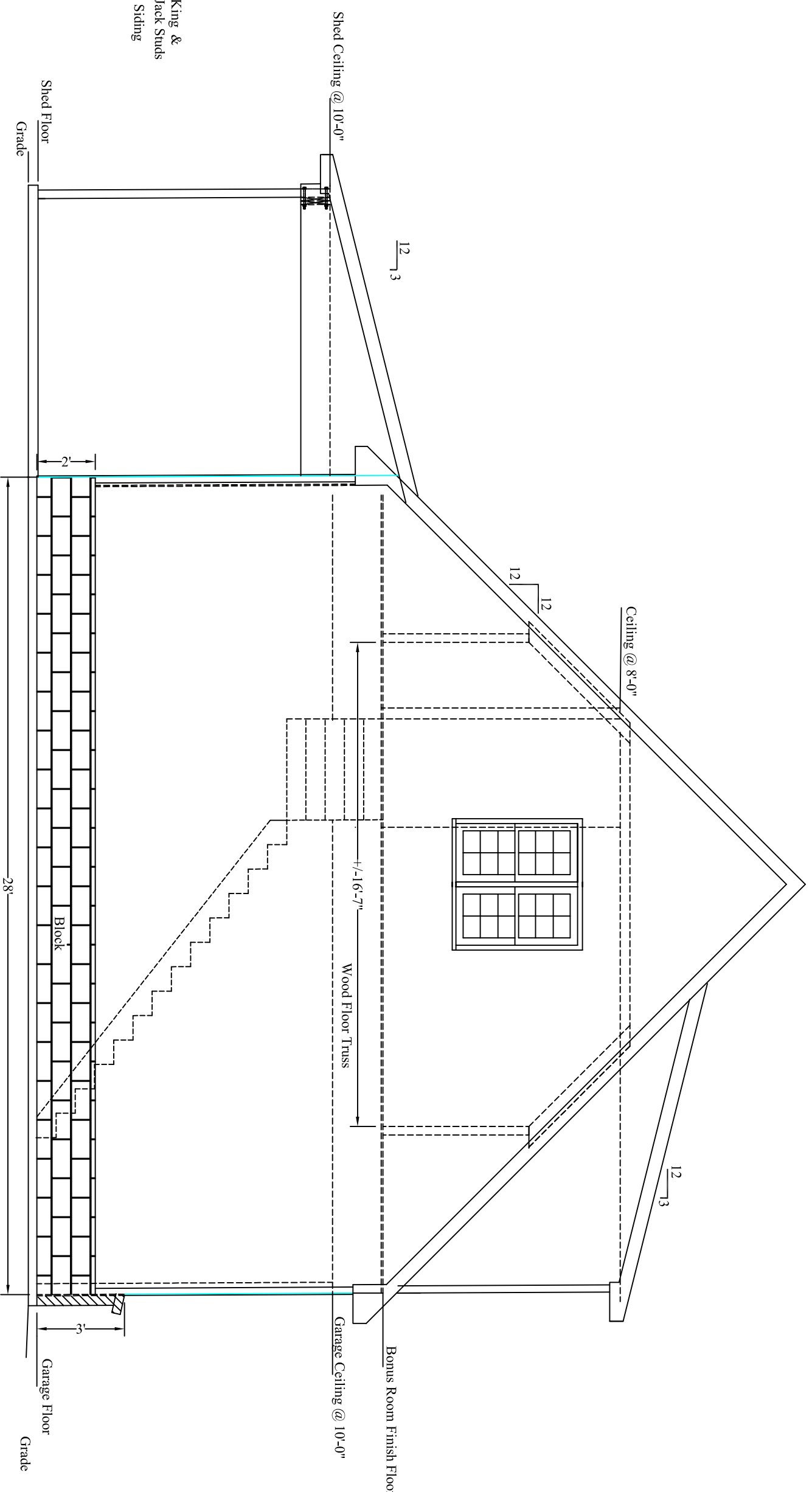
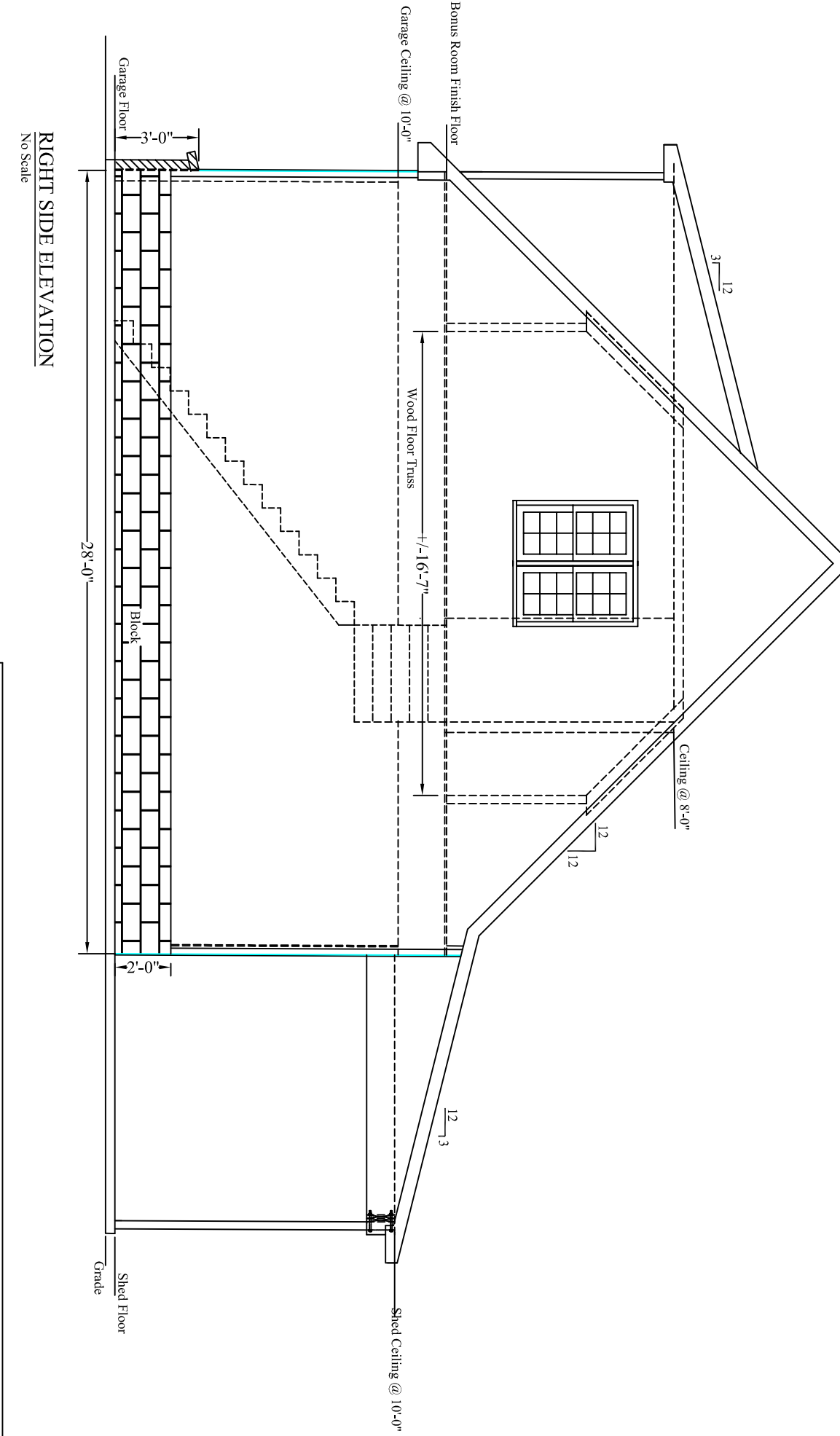


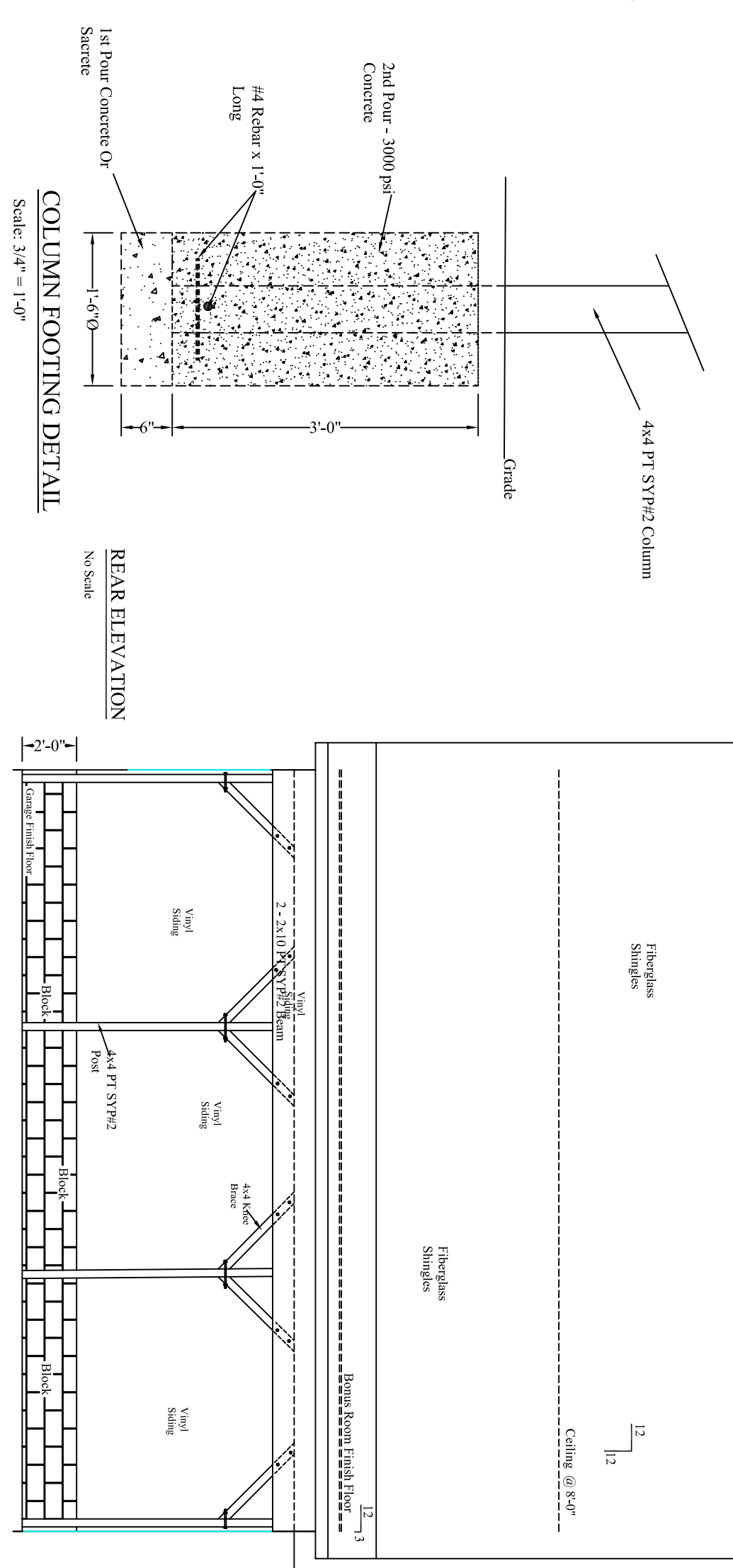
FRONT ELEVATION
 (Showing Final Frame)
 Scale: 1/4" = 1'-0"



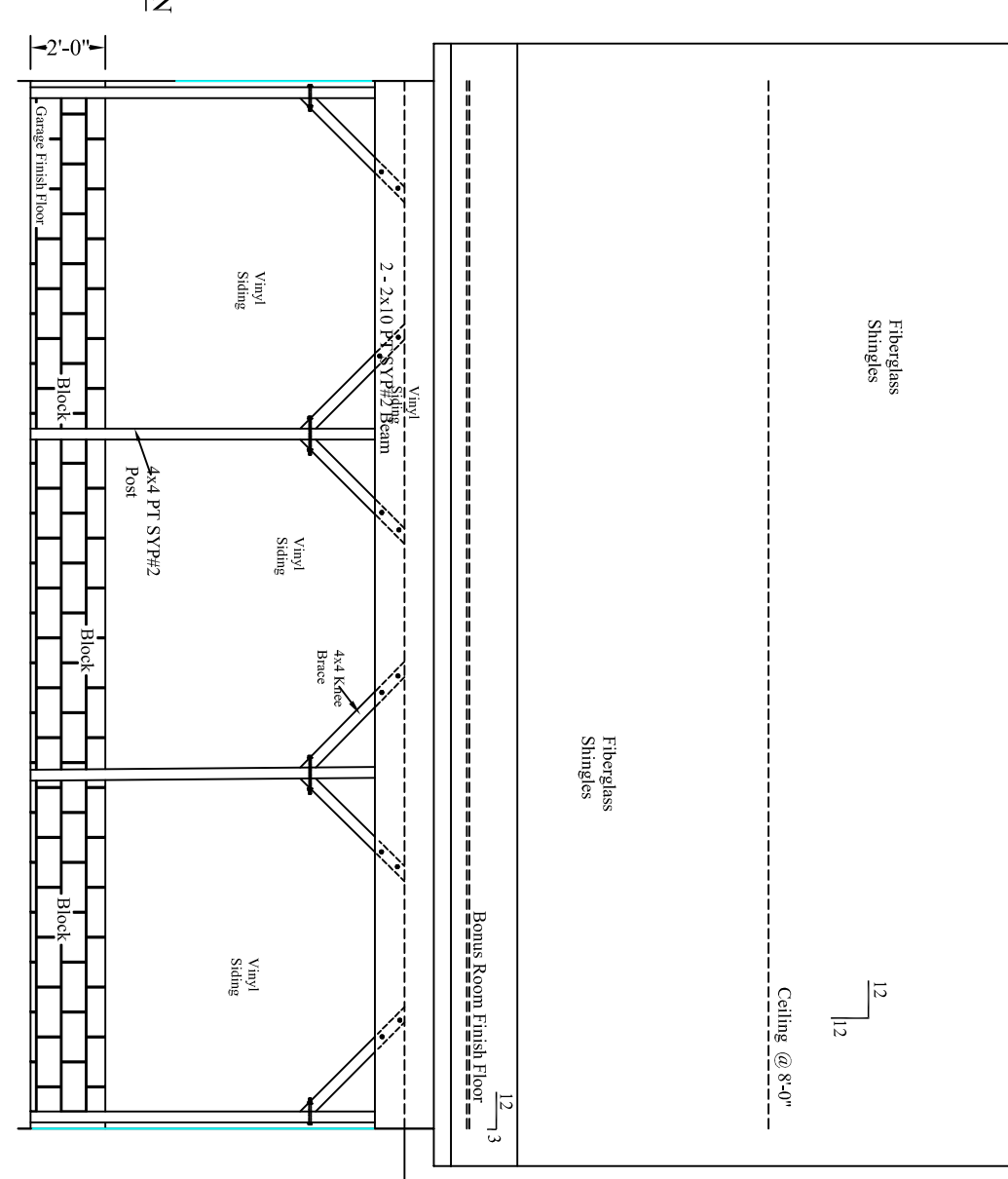
LEFT SIDE ELEVATION
 Scale: 1/4" = 1'-0"



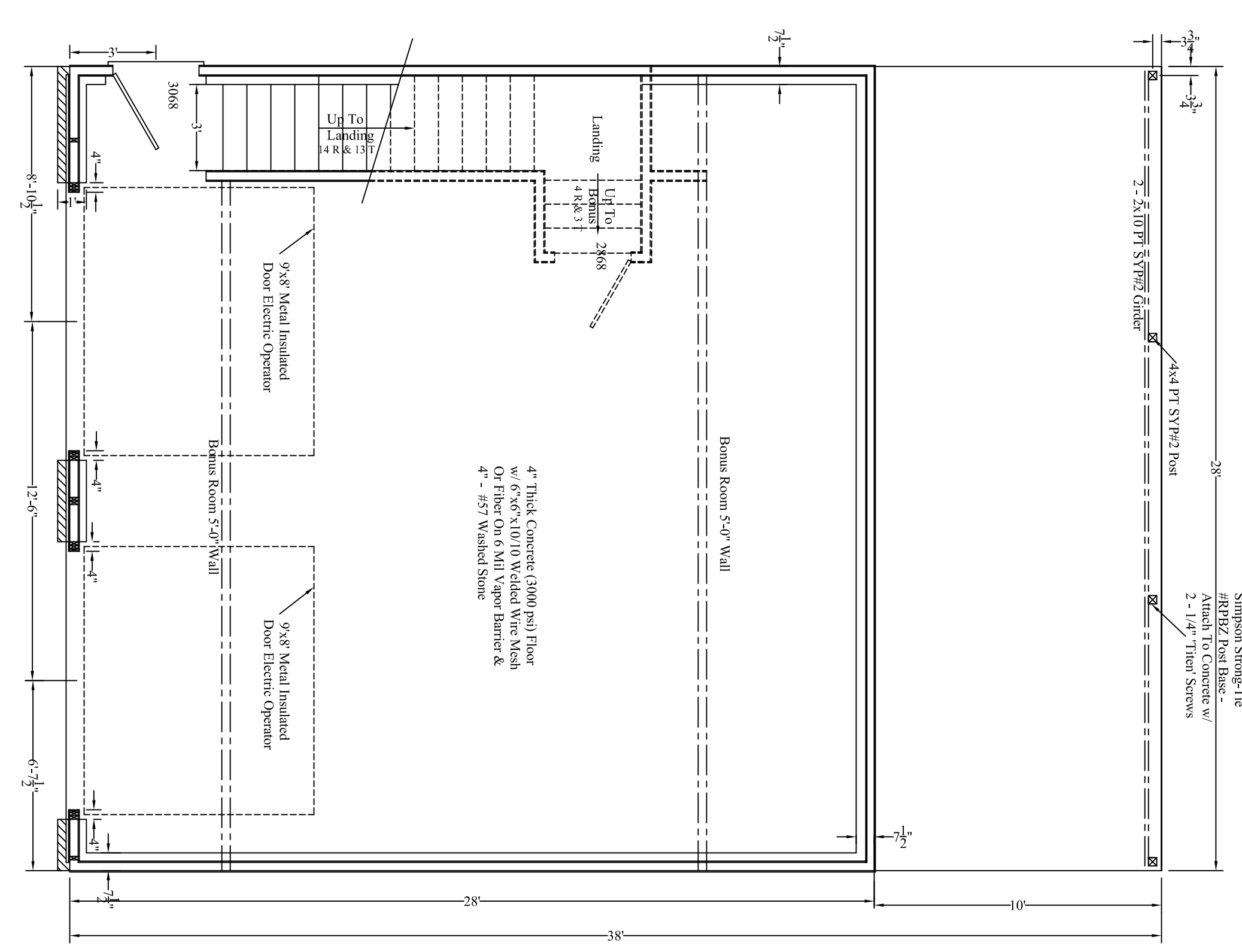
RIGHT SIDE ELEVATION
 No Scale



COLUMN FOOTING DETAIL
 Scale: 3/4" = 1'-0"

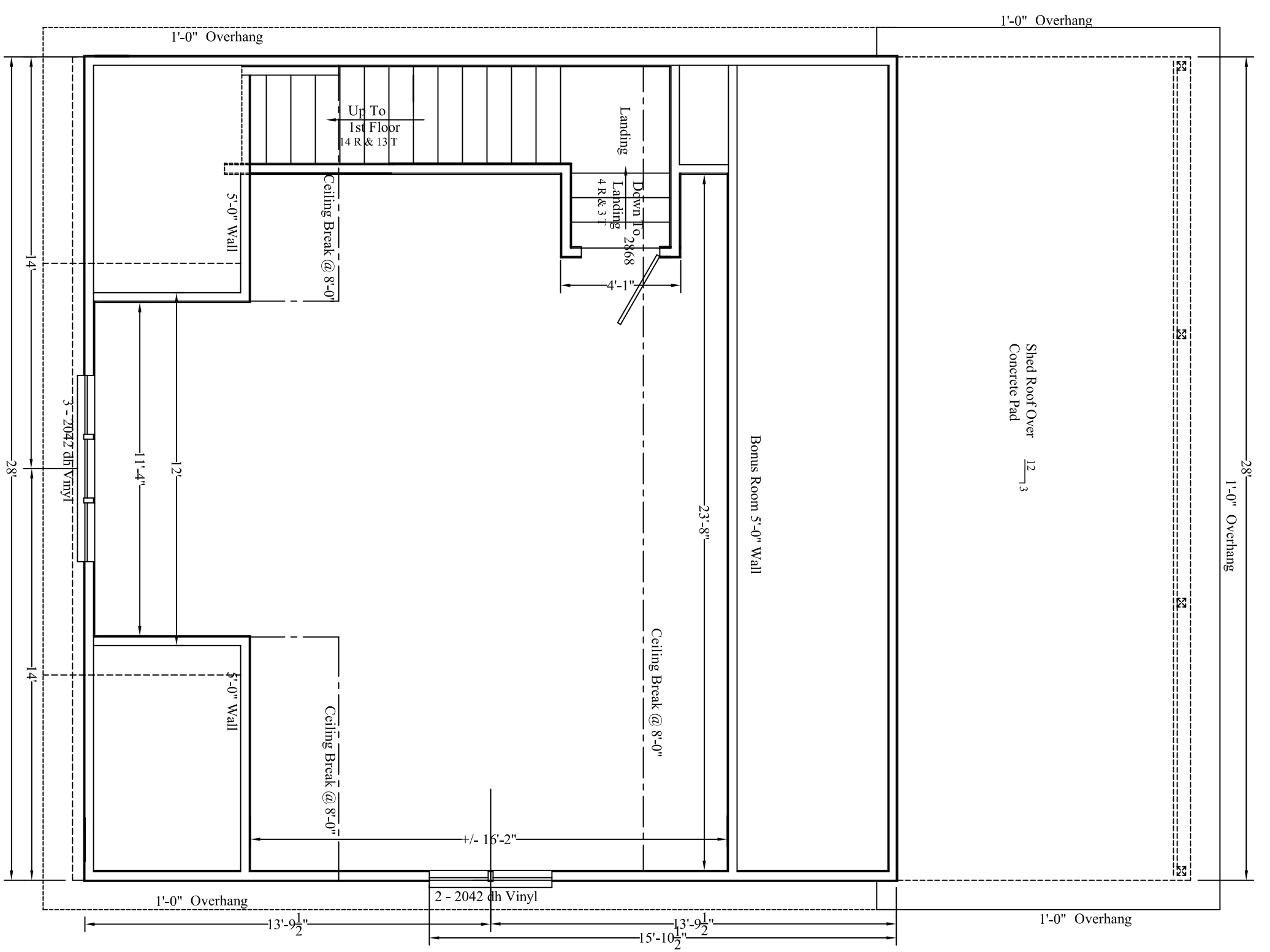


REAR ELEVATION
 No Scale

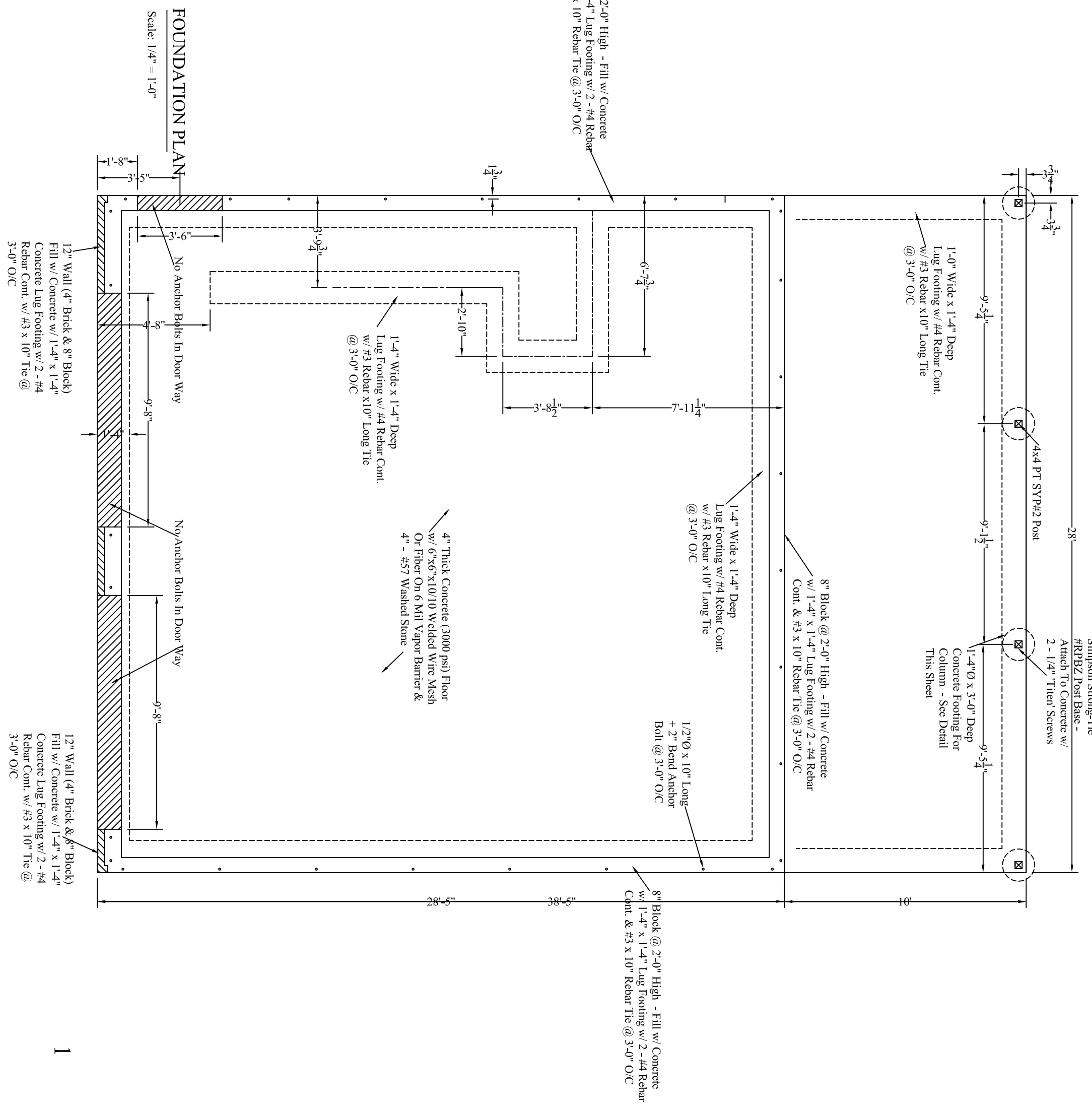


1st FLOOR PLAN
 10'-0" Ceiling
 Scale: 1/4" = 1'-0"

DRAFTING SERVICES NOTE
 1. All dimensions, details and drawings are for information only. Every attempt has been made in the preparation of these drawings & dimensions to avoid mistakes. Drafting Services will not be liable for errors after construction begins.
 Dimension Note:
 1. All dimensions are for locating structural elements and general checking only.
 2. Dimensions are to be per architectural plans unless otherwise noted.
 3. Finish are to check and coordinate any discrepancies w/ Drafting Services.



BONUS FLOOR PLAN
 10'-0" Ceiling
 Scale: 1/4" = 1'-0"



FOUNDATION PLAN
 Scale: 1/4" = 1'-0"

FOUNDATION PLAN
 1. All dimensions are for locating structural elements and general checking only.
 2. Dimensions are to be per architectural plans unless otherwise noted.
 3. Finish are to check and coordinate any discrepancies w/ Drafting Services.