

A.A. Takla Engineering, PLLC

Consulting. Design. Efficiency.
 NC Firm License # P-1446
 718 Arnette Ave. Durham, NC 27701

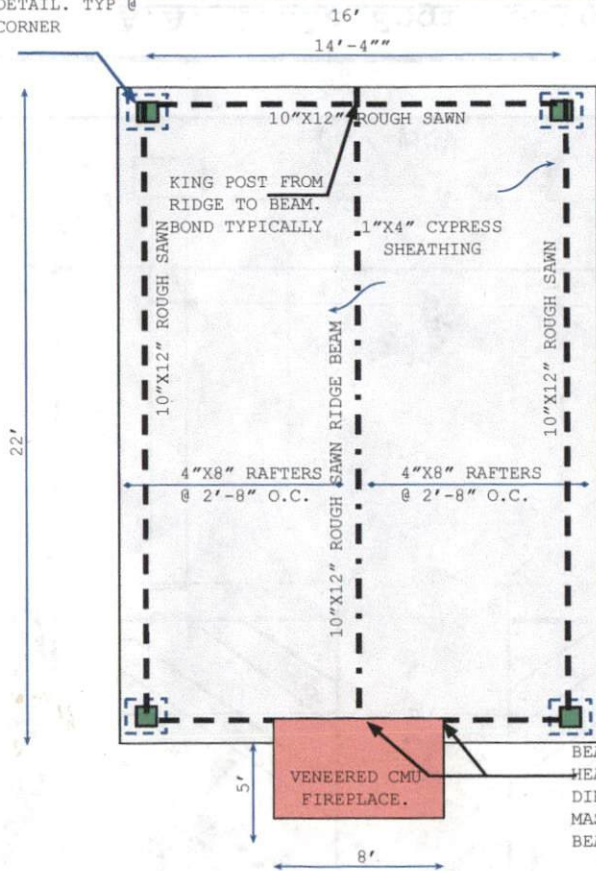
Andy A. Takla, PE | AndyTakla@TaklaEngr.com | 919-423-0470

Project: 7150 NC HWY 27 East
 Location: Coats, NC
 Company: Riggs Custom Construction
 Care of: Michael Riggs
 Subject: Pavilion Design
 Job No.: 0547-20

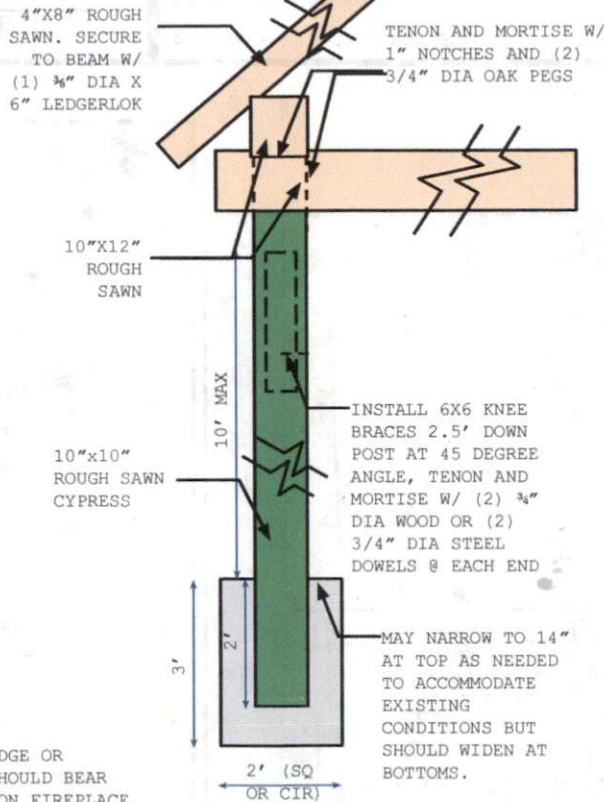
SHEET: 3 OF 3
 SCALE: NTS
 PRINT IN COLOR ON
 11"X17" PAPER
 PE SEAL FOR
 STRUCTURAL ONLY

FRAMING PLAN

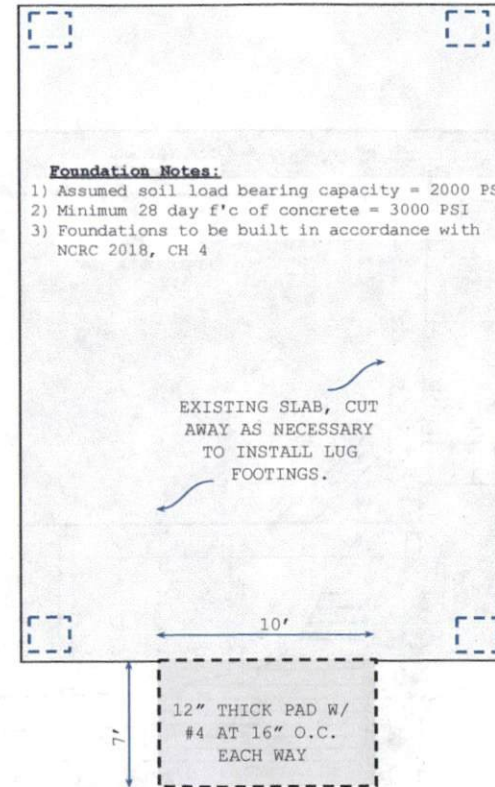
10"x10" ROUGH SAWN CYPRESS POSTS PER POST DETAIL. TYP @ EACH CORNER



POST AND FOOTING DETAIL



FOUNDATION PLAN



A.A. Takla Engineering, PLLC

Consulting. Design. Efficiency.

NC Firm License # P-1446
718 Arnette Ave. Durham, NC 27701

Andy A. Takla, PE | AndyTakla@TaklaEngr.com | 919-423-0470

Project: 7150 NC HWY 27 East
Location: Coats, NC
Company: Riggs Custom Construction
Care of: Michael Riggs
Subject: Pavilion Design
Job No.: 0547-20



SHEET: 1 OF 3
SCALE: 1/4" = 1'
PRINT IN COLOR ON 11"X17" PAPER
PE SEAL FOR STRUCTURAL ONLY