

COMMENTS: _____

LANDSCAPE POSITIONS	GROUP	TEXTURES	.1955 LTAR	CONSISTENCE MOIST	WET
R-RIDGE	I	S-SAND	1.2 - 0.8	VFR-VERY FRIABLE	NS-NON-STICKY
S-SHOULDER SLOPE		LS-LOAMY SAND		FR-FRIABLE	SS-SLIGHTLY STICKY
L-LINEAR SLOPE	II	SL-SANDY LOAM	0.8 - 0.6	FI-FIRM	S-STICKY
FS-FOOT SLOPE		L-LOAM		VFI-VERY FIRM	VS-VERY STICKY
N-NOSE SLOPE				EFI-EXTREMELY FIRM	NP-NON-PLASTIC
H-HEAD SLOPE	III	SI-SILT	0.6 - 0.3		SP-SLIGHTLY STICKY
CC-CONCLAVE SLOPE		SIL-SILT LOAM			P-PLASTIC
CV-CONVEX SLOPE		CL-CLAY LOAM			VP-VERY PLASTIC
T-TERRACE		SCL-SANDY CLAY LOAM			
FP-FLOOD PLAN	IV	SIC-SILTY CLAY	0.4 - 0.1		
		C-CLAY			
		SC-SANDY CLAY			

11-24-2010
- Need Irons

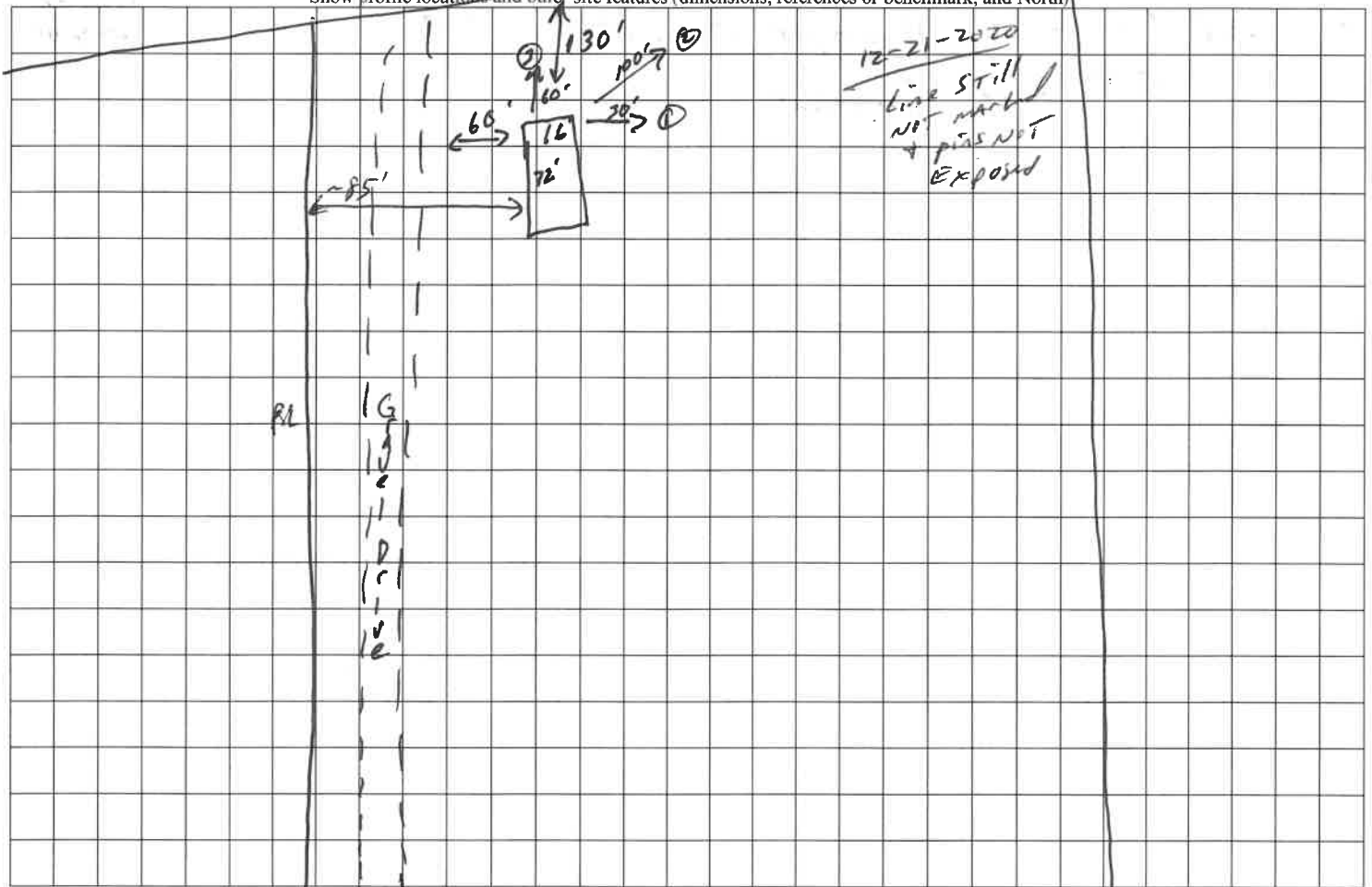
STRUCTURE
 SG-SINGLE GRAIN
 M- MASSIVE
 CR-CRUMB
 GR-GRANULAR
 SBR-SUBANGULAR BLOCKY
 ABK-ANGULAR BLOCKY
 PL-PLATY
 PR-PRISMATIC

MINERALOGY
 SLIGHTLY EXPANSIVE
 EXPANSIVE

12-9-2010
Need Irons

12-15-2010 (client (buyer) stated that they placed these metal bars where they think the corners are)

Show profile locations and other site features (dimensions, references or benchmark, and North)



Hillman Grove