

The Floor

Floor joists
on 16in centers

3/4" tongue and groove plywood

double 2x10 girder

16ft

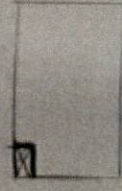
24ft

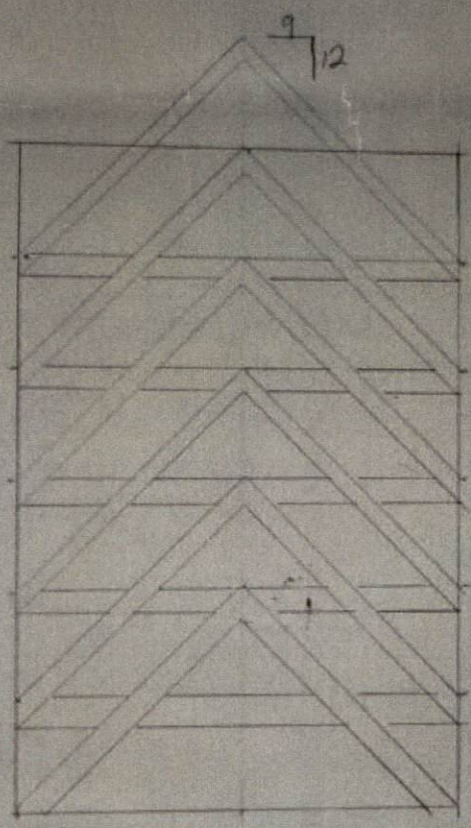
6x6 post
holes for post

2x3x3ft deep
with one bag of
Solvite

2x10 post
Floor joist
noticed for
Dowelwood

6x6
noticed
on axis





2x8
Rafters with 2x8
ceiling joist

The Roof