



NORTH CAROLINA HARNETT COUNTY
 I, Mickey R. Bennett, Surveyor, do hereby certify that the plat of subdivision shown on this map was prepared in accordance with the provisions of Chapter 40A, Article 1, of the General Statutes of North Carolina, and that the plat is a true and correct copy of the original filed in my office on August 9, 2007.
 A.D. 2007.
 Mickey R. Bennett
 Surveyor

DEED REFERENCE
 DEED BOOK 2185 PAGE 378
 DEED BOOK 2288 PAGE 441

MAP REFERENCE
 MAP NO. 2004-101
 MAP NO. 2004-187
 MAP NO. 2004-178
 MAP NO. 2004-116

1. NEW LOTS SET AT ALL CORNERS UNLESS OTHERWISE NOTED.
 2. ALL ROAD SHALL BE DESIGNATED NORTH CAROLINA
 3. ALL OWNERS SHALL BE RESPONSIBLE FOR THE MAINTENANCE OF THE ROAD AND SHALL BE RESPONSIBLE FOR THE REPAIR AND MAINTENANCE OF THE ROAD.
 4. CONVEYANCE AND MAINTENANCE OF THROUGH RIGHTS SHALL BE AS SHOWN ON THIS PLAT.
 5. ALL OWNERS SHALL BE RESPONSIBLE FOR THE MAINTENANCE OF THE ROAD AND SHALL BE RESPONSIBLE FOR THE REPAIR AND MAINTENANCE OF THE ROAD.

MINIMUM BUILDING SET BACKS
 FRONT YARD 35'
 REAR YARD 25'
 SIDE YARD 10'
 CORNER LOT SIDE YARD 20'
 MAXIMUM HEIGHT 35'

I HEREBY CERTIFY THAT THIS RECORD PLAT COMPLIES WITH THE REQUIREMENTS OF CHAPTER 40A, ARTICLE 1, OF THE GENERAL STATUTES OF NORTH CAROLINA, AND THAT THE PLAT IS A TRUE AND CORRECT COPY OF THE ORIGINAL FILED IN MY OFFICE ON AUGUST 9, 2007.
 DATE: 08/14/07
 Mickey R. Bennett
 PLANNING DIRECTOR

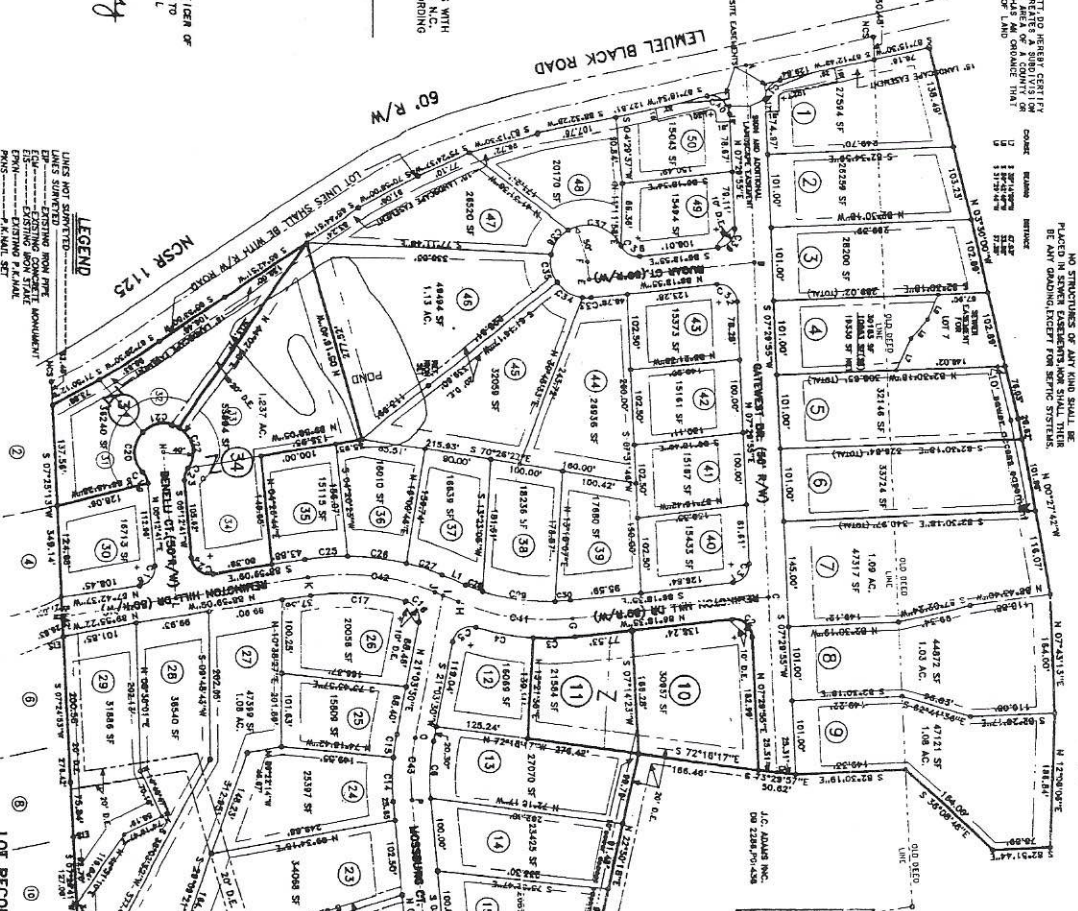
STATE OF NORTH CAROLINA
 COUNTY OF HARNETT
 I, Mickey R. Bennett, REVIEW OFFICER OF HARNETT COUNTY CERTIFY THAT THE MAP ON PLAT TO WHICH THIS CERTIFICATION IS AFFIXED MEETS ALL STATUTORY REQUIREMENTS FOR RECORDING.
 DATE: 8-14-07
 Mickey R. Bennett
 REVIEW OFFICER

NORTH CAROLINA
 HARNETT COUNTY
 THIS MAP WAS PREPARED FOR REGISTRATION AND RECORDED IN THE OFFICE OF MAP NUMBER 2007-709
 DATE: August 9, 2007
 Mickey R. Bennett
 REGISTER OF DEEDS

CERTIFICATION OF OWNERSHIP, OCCUPATION AND JURISDICTION
 I, Mickey R. Bennett, Surveyor, do hereby certify that the plat of subdivision shown on this map was prepared in accordance with the provisions of Chapter 40A, Article 1, of the General Statutes of North Carolina, and that the plat is a true and correct copy of the original filed in my office on August 9, 2007.
 A.D. 2007.
 Mickey R. Bennett
 Surveyor

FOR REGISTRATION OF DEEDS
 I, Mickey R. Bennett, Surveyor, do hereby certify that the plat of subdivision shown on this map was prepared in accordance with the provisions of Chapter 40A, Article 1, of the General Statutes of North Carolina, and that the plat is a true and correct copy of the original filed in my office on August 9, 2007.
 A.D. 2007.
 Mickey R. Bennett
 Surveyor

THE LOTS ON THIS PLAT HAVE BEEN EVALUATED BY A PRIVATE CONSULTANT BASED ON APPROPRIATE REGULATORY REQUIREMENTS FOR EACH LOT. THE CONSULTANT'S REPORT IS ATTACHED TO THIS PLAT. THE FINAL APPROVAL FOR EACH LOT REQUIRES ISSUANCE OF THE APPROPRIATE HARNETT COUNTY HEALTH DEPARTMENT PERMITS FOR SPECIFIC USE AND SITING IN ACCORDANCE WITH REGULATIONS IN FORCE AT THE TIME OF PERMITTING. THE PERMITTING PROCESS IS THE RESPONSIBILITY OF THE APPLICANT FOR ANY SITE WORK.
 DATE: 08/14/07
 Mickey R. Bennett
 Surveyor



LOT NO.	OWNER	DEED REF.	PARCEL ID.	PIN NO.
1	EVER PAE DYCEL	08-2288-00441	0105258 0095 51	0536-20-0244.000
2	EVER PAE DYCEL	08-2288-00441	0105258 0095 52	0536-20-0244.000
3	EVER PAE DYCEL	08-2288-00441	0105258 0095 53	0536-20-0244.000
4	EVER PAE DYCEL	08-2288-00441	0105258 0095 54	0536-20-0244.000
5	EVER PAE DYCEL	08-2288-00441	0105258 0095 10	0536-20-0244.000
6	EVER PAE DYCEL	08-2288-00441	0105258 0095 11	0536-20-0244.000
7	EVER PAE DYCEL	08-2288-00441	0105258 0095 12	0536-20-0244.000
8	EVER PAE DYCEL	08-2288-00441	0105258 0095 13	0536-20-0244.000
9	EVER PAE DYCEL	08-2288-00441	0105258 0095 14	0536-20-0244.000
10	EVER PAE DYCEL	08-2288-00441	0105258 0095 15	0536-20-0244.000
11	EVER PAE DYCEL	08-2288-00441	0105258 0095 16	0536-20-0244.000
12	EVER PAE DYCEL	08-2288-00441	0105258 0095 17	0536-20-0244.000
13	EVER PAE DYCEL	08-2288-00441	0105258 0095 18	0536-20-0244.000
14	EVER PAE DYCEL	08-2288-00441	0105258 0095 19	0536-20-0244.000
15	EVER PAE DYCEL	08-2288-00441	0105258 0095 20	0536-20-0244.000
16	EVER PAE DYCEL	08-2288-00441	0105258 0095 21	0536-20-0244.000
17	EVER PAE DYCEL	08-2288-00441	0105258 0095 22	0536-20-0244.000
18	EVER PAE DYCEL	08-2288-00441	0105258 0095 23	0536-20-0244.000
19	EVER PAE DYCEL	08-2288-00441	0105258 0095 24	0536-20-0244.000
20	EVER PAE DYCEL	08-2288-00441	0105258 0095 25	0536-20-0244.000
21	EVER PAE DYCEL	08-2288-00441	0105258 0095 26	0536-20-0244.000
22	EVER PAE DYCEL	08-2288-00441	0105258 0095 27	0536-20-0244.000
23	EVER PAE DYCEL	08-2288-00441	0105258 0095 28	0536-20-0244.000
24	EVER PAE DYCEL	08-2288-00441	0105258 0095 29	0536-20-0244.000
25	EVER PAE DYCEL	08-2288-00441	0105258 0095 30	0536-20-0244.000
26	EVER PAE DYCEL	08-2288-00441	0105258 0095 31	0536-20-0244.000
27	EVER PAE DYCEL	08-2288-00441	0105258 0095 32	0536-20-0244.000
28	EVER PAE DYCEL	08-2288-00441	0105258 0095 33	0536-20-0244.000
29	EVER PAE DYCEL	08-2288-00441	0105258 0095 34	0536-20-0244.000
30	EVER PAE DYCEL	08-2288-00441	0105258 0095 35	0536-20-0244.000
31	EVER PAE DYCEL	08-2288-00441	0105258 0095 36	0536-20-0244.000
32	EVER PAE DYCEL	08-2288-00441	0105258 0095 37	0536-20-0244.000
33	EVER PAE DYCEL	08-2288-00441	0105258 0095 38	0536-20-0244.000
34	EVER PAE DYCEL	08-2288-00441	0105258 0095 39	0536-20-0244.000
35	EVER PAE DYCEL	08-2288-00441	0105258 0095 40	0536-20-0244.000
36	EVER PAE DYCEL	08-2288-00441	0105258 0095 41	0536-20-0244.000
37	EVER PAE DYCEL	08-2288-00441	0105258 0095 42	0536-20-0244.000
38	EVER PAE DYCEL	08-2288-00441	0105258 0095 43	0536-20-0244.000
39	EVER PAE DYCEL	08-2288-00441	0105258 0095 44	0536-20-0244.000
40	EVER PAE DYCEL	08-2288-00441	0105258 0095 45	0536-20-0244.000
41	EVER PAE DYCEL	08-2288-00441	0105258 0095 46	0536-20-0244.000
42	EVER PAE DYCEL	08-2288-00441	0105258 0095 47	0536-20-0244.000
43	EVER PAE DYCEL	08-2288-00441	0105258 0095 48	0536-20-0244.000
44	EVER PAE DYCEL	08-2288-00441	0105258 0095 49	0536-20-0244.000
45	EVER PAE DYCEL	08-2288-00441	0105258 0095 50	0536-20-0244.000
46	EVER PAE DYCEL	08-2288-00441	0105258 0095 51	0536-20-0244.000
47	EVER PAE DYCEL	08-2288-00441	0105258 0095 52	0536-20-0244.000
48	EVER PAE DYCEL	08-2288-00441	0105258 0095 53	0536-20-0244.000
49	EVER PAE DYCEL	08-2288-00441	0105258 0095 54	0536-20-0244.000
50	EVER PAE DYCEL	08-2288-00441	0105258 0095 55	0536-20-0244.000

REVISION MAP RECORDED IN MAP NO. 2007-146 (REVISION ON LOTS 10, 11, 31, 32, 33, 34 & SEWER EASEMENT FOR LOT 10)
 SURVEY FOR:
GATEWEST SUBDIVISION

BENNETT SURVEYS, INC.
 1662 CLARK RD., LILLINGTON, N.C. 27546
 (910) 893-5252

TOWNSHIP	ANDERSON CREEK	COUNTY	HARNETT
STATE	NORTH CAROLINA	DATE	AUGUST 9, 2007
ZONE	WATERSHED DISTRICT	TAX PARCEL ID#	SEE REFERENCE
RA-20R	N/A	PIN #	
SCALE	1" = 120'	DRAWN BY	MRB
CHECKED & CLOSE BY		FIELD BOOK	
		DRAWING NO	05581BBB

Map # 2007-709