



VICINITY MAP (NTS)

DEVELOPMENT BY THE NUMBERS INC  
 D.B.3772, PG.536  
 M.B.2017, PG.44

N 85°25'00"W 125.00'

PLAT NORTH  
 (REF: PC# C, SLIDE 83D)



- LEGEND
- NTS NOT TO SCALE
  - EIP EXISTING IRON PIPE
  - PP POWER POLE
  - W/M WATER METER
  - TB TELEPHONE BOX
  - IPS IRON PIPE SET
  - CP&L TRANSFORMER
  - CATV CABLE TV BOX
  - L POLE LIGHT POLE
  - OHPL OVERHEAD POWER LINE
  - F.E.S. FLARED END SECTION (PIPE)
  - RCP REINFORCED CONC. PIPE
  - B.O.C. BACK OF CURB
  - F.H. FIRE HYDRANT
  - C/O SEWER CLEAN OUT
  - EIS EXISTING IRON STAKE
  - M.H. MANHOLE
  - ECM EXISTING CONCRETE MONUMENT
  - P.K. PARKER KALON NAIL

13

PC# C, SLIDE 83D

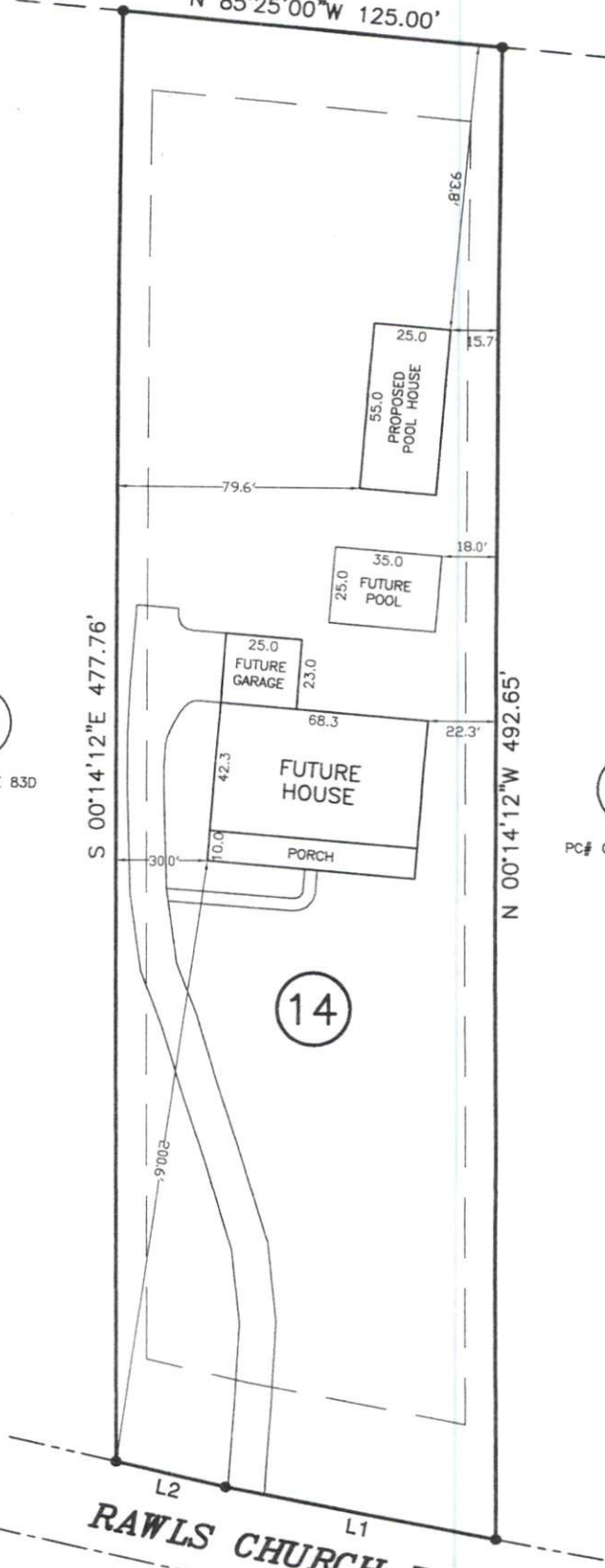
15

PC# C, SLIDE 83D

Course	Bearing	Distance
L1	S 79°15'44" E	90.29'
L2	S 77°21'56" E	36.85'

S 00°14'12"E 477.76'

N 00°14'12"W 492.65'

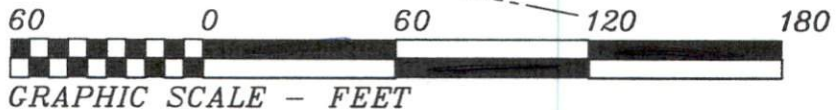


14

RAWLS CHURCH ROAD  
 (60' PUBLIC R/W)

NOTE: SHOWN IS LOT 14 OF  
 OAK CREEK S/D  
 REF: PC# C, SLIDE 83D

AREA = 1.388 ACRES  
 XXXX RAWLS CHURCH ROAD  
 PIN - 0664-29-6118.000



THIS IS TO CERTIFY THAT THIS MAP WAS  
 PREPARED FROM AN ACTUAL SURVEY OF THE

PRELIMINARY PLOT PLAN FOR: