

161 Bay Street
Lot #8

20' x 20' shed/shop
floor and walls

single 2"x8"
girders treated

Possible
2"x8"
girders treated
5' o.c.

2"x6"
joist
16" o.c.
treated

12"x12"x12"
footings
5' o.c.

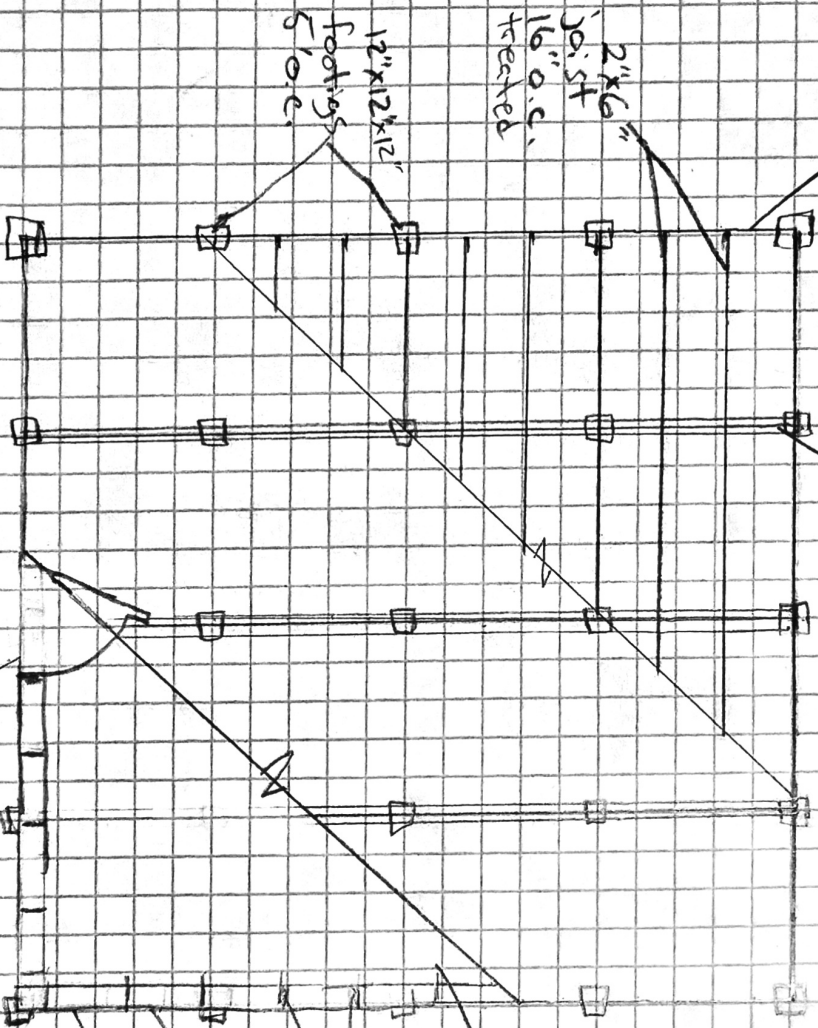
3'Ø"
L.H. Door
Ext. Grade

3/4" plywood
Deck treated

2"x6"x8"
studs
2' o.c.

Vinyl
siding

1/2" o.s.p.
@ corners
1/2" foam
elsewhere



2"x6" joist

footing

2"x6" joist

2"x6" joist