

Overhang

Double 2x6 rafter

Screen

Screen

Screen

Existing fascia + soffit

Screened Area

12'6"

Screen

Double 2x10

2x6 screen wall

rafter extend all the way across 16" o/c

2x6

Existing roof

Existing Soffit

Screen door

Open Area

12'

Open deck Area

12'6"

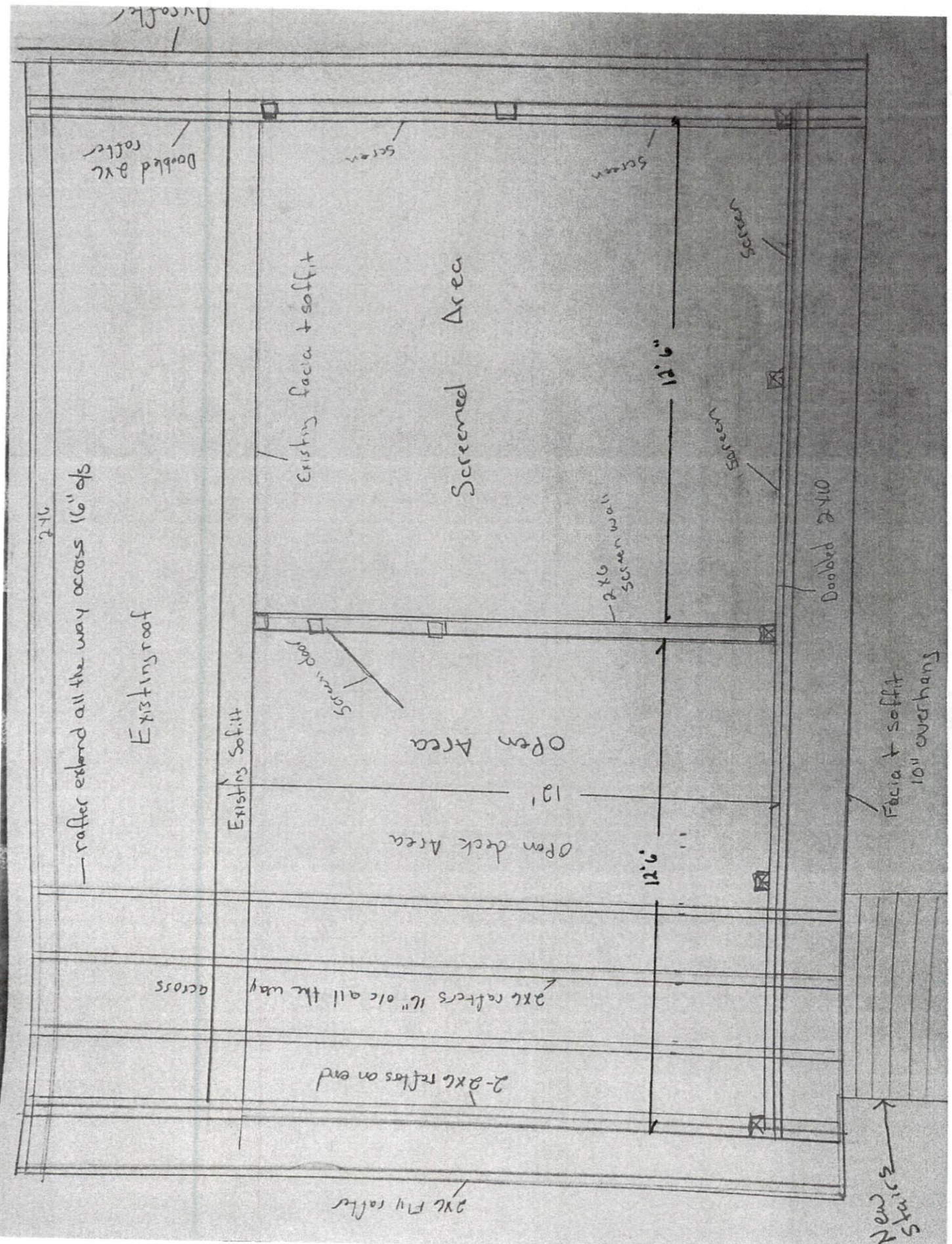
Fascia + soffit 10" overhang

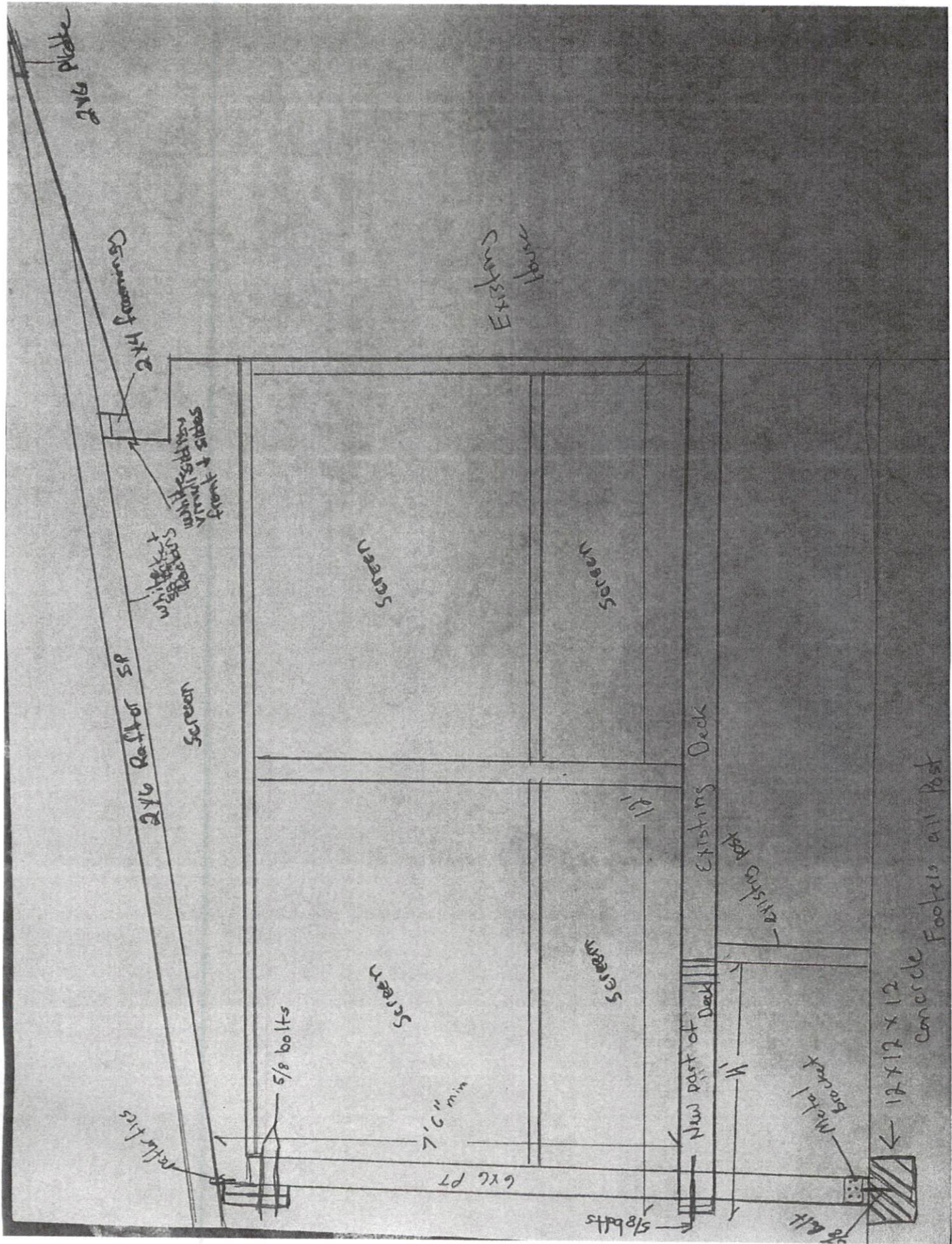
2x6 rafters 16" o/c all the way across

2-2x6 rafters on end

2x6 Ply rafter

Station 5





2x6 plate

Concrete 1x4x6

Existing  
House

Screen  
Front  
Sides  
Vertical  
Members

Screen  
Vertical  
Members

2x6 Rafter or SP

Screen

Screen

Screen

Existing Deck

Existing Deck

Screen

Screen

New part of Deck

Metal  
Bracket

← 12x12x12  
concrete  
Footers all Post

reflector ties

5/8 bolts

7/8" min

6x6 PT

5/8 bolts

1/2" alt