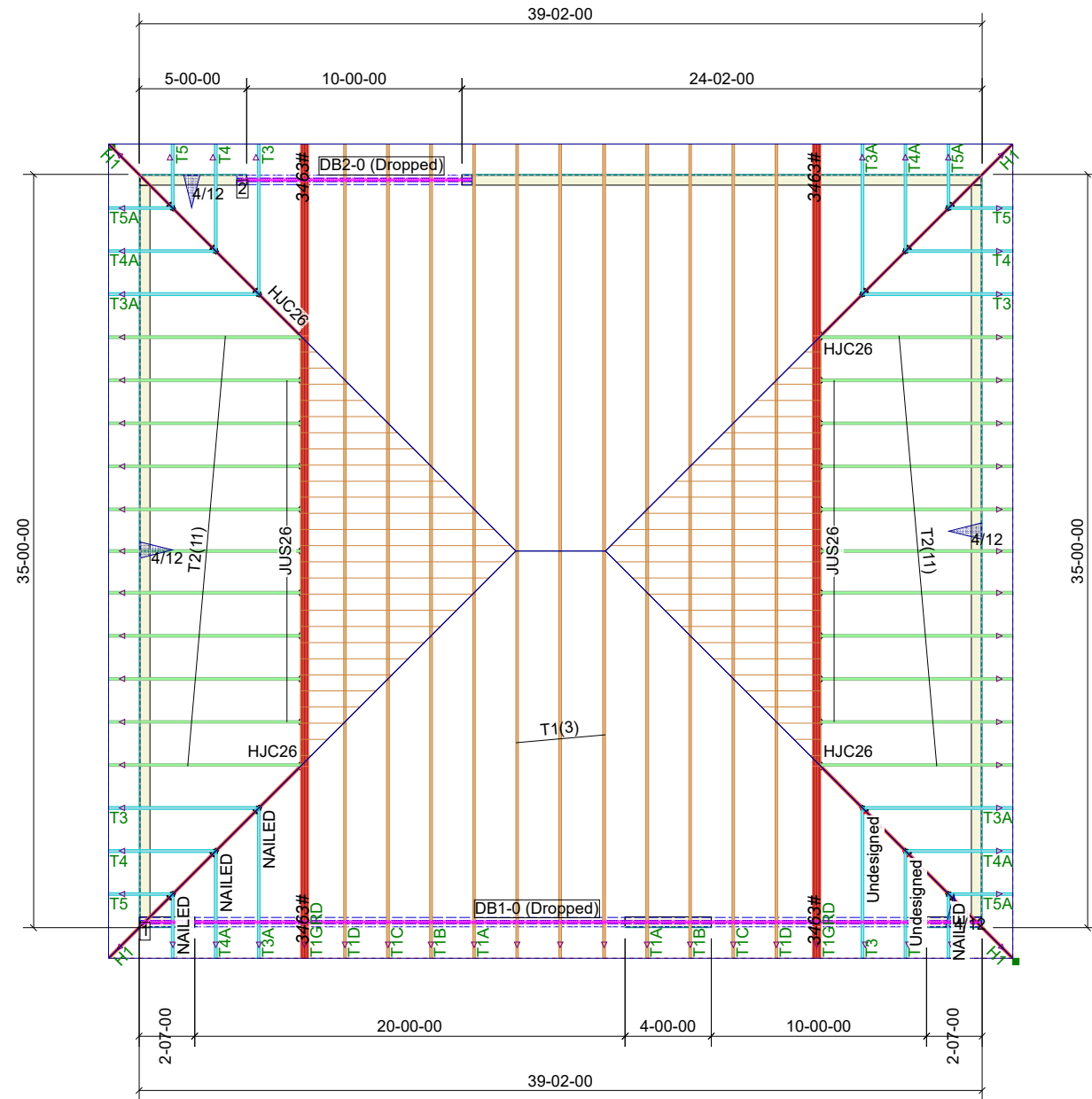


THIS LAYOUT IS TO BE USED AS A TRUSS PLACEMENT GUIDE ONLY.
PLEASE REFER TO BUILDING PLANS FOR BUILDING CONSTRUCTION AND DETAILS,
SUCH AS PLUMBING OR DUCT DROPS.

**PROPOSED DESIGN-
NOT FOR
CONSTRUCTION**

**HOLLAND HIP GARAGE
ROOF TRUSSES
2' OC, 17.5" OH**



| Products | | | | | | |
|-----------------|-------------|--------------------------------|-------|---------|----------|--|
| PlotID | Length | Product | Plies | Net Qty | Fab Type | |
| DB2-0 (Dropped) | 12'-00'-00" | 1-3/4X9-1/4 LP-LVL 2900Fb-2.0E | 3 | 3 | MFD | |
| DB1-0 (Dropped) | 40'-00'-00" | 1-3/4X16 LP-LVL 2900Fb-2.0E | 3 | 3 | MFD | |

| Truss Connector Total List | | |
|----------------------------|---------|-----|
| Manuf | Product | Qty |
| USP | HJC26 | 4 |
| USP | JUS26 | 18 |

Roof Truss Loading per
2018 NC Residential Code
Top Chord Live Load 20# PSF
Top Chord Dead Load 10# PSF
Bottom Chord Live Load 0# PSF
Bottom Chord Dead Load 10# PSF

Trusses are designed for additional
storage load wherever a 42"x24"
box will fit between the webs.

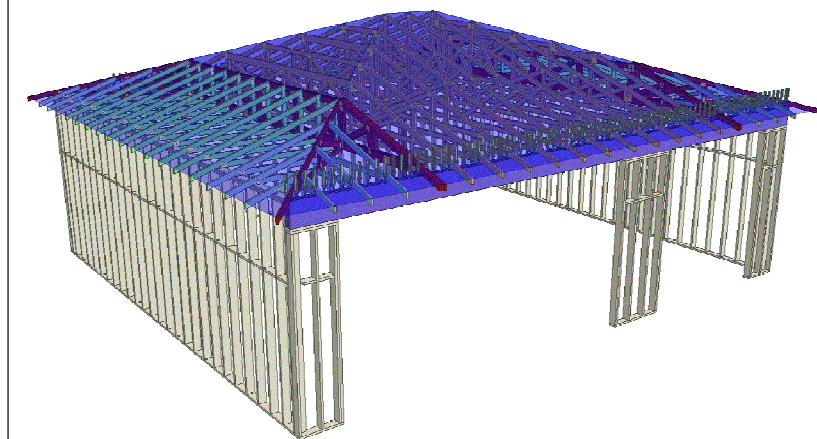
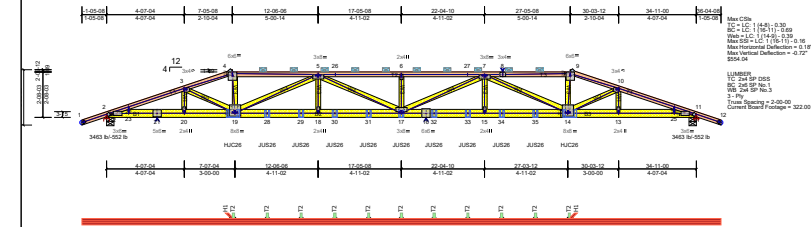
△ - This symbol denotes left end of
truss as shown on truss drawings

● - Approximate location of toilet
drop. Builder please confirm.

Truss connections by others:

⊕ - Nailed
⊖ - Ledger

- Notes:
- Exterior dimensions shown are assumed to be:
 Out-to-out of stud
 Out-to-out of sheathing
 - Adjust truss locations as needed for plumbing and mechanical clearance. Unless otherwise noted, trusses may be shifted as long as O.C. spacing shown is not exceeded.
 - Do not cut, drill, or otherwise damage any part of any truss without prior approval from Peak Truss.
 - Do not approve drawings if any information herein is unclear. Once ordered trusses will be fabricated as approved.
 - Please contact Peak Truss Builders with any questions. We are available to help in any way we can. We can be reached at 919-545-5555 or sales@peaktruss.com



Job #

Q-2002493

Holland Hip Garage
3280 NC 210 South
Bunlevel NC
28323

Date Quoted:

Designer:

Sarah Billings

Valued Customer

**Peak Truss
Builders, LLC**
PO Box 340, New Hill, NC 27562