

NOTES:

1. DRAWINGS ARE FOR A STANDALONE GARAGE TO BE CONSTRUCTED AT A RESIDENTIAL PROPERTY LOCATED AT:

62 JUDI LEE ROAD
LILLINGTON, NC 27546

2. ALL CONSTRUCTION TO BE IN ACCORDANCE WITH 2018 NCBC (2015 IBC WITH NC AMENDMENTS)

3. SCOPE: FRAME AND FOUNDATION DESIGN ARE INCLUDED -- WALLS, ROOFS, DOORS, AND OTHER COMPONENTS ARE BY OTHERS

4. LOADS

- 4.1 DEAD, ROOF = 3 PSF
- 4.2 LIVE, ROOF = 20 PSF
- 4.3 WIND, V = 117 MPH, RISK CATEGORY = 2
- 4.4 SNOW = 10 PSF
- 4.5 SEISMIC DESIGN CATEGORY = C , SITE CLASS = D, Sds = 0.211, Sd1 = 0.145,
- 4.6 LOCATION IS NOT IN A FLOOD HAZARD ZONE

5. FOUNDATIONS AND ANCHORS

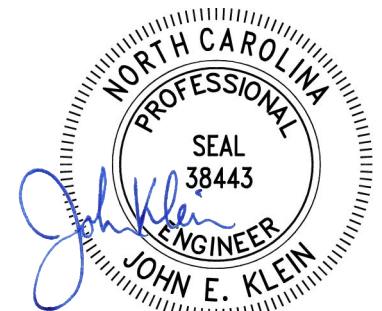
- 5.1 USE NORMAL WEIGHT CONCRETE, f'c = MINIMUM 2,500 PSI @ 28 DAYS
- 5.2 MIX CONCRETE IN ACCORDANCE WITH ASTM C-94
 - 5.2.1 CALCIUM CHLORIDE ADMIXTURES ARE PROHIBITED
 - 5.2.2 PORTLAND CEMENT SHALL CONFORM TO ASTM C-150, TYPE 1
 - 5.2.3 CONCRETE AGGREGATES SHALL CONFORM TO ASTM C-33
- 5.3 SUBGRADE SOILS ARE TO BE UNIFORM, DENSE, WELL-DRAINED, AND FREE OF FOREIGN OBJECTS AND DELETERIOUS MATERIALS -- SUBGRADE PREPARATION IS AS REQUIRED BY THE JURISDICTION OR A GEOTECHNICAL ENGINEER, AS NEEDED
 - 5.3.1 ALLOWABLE SOIL BEARING PRESSURE = 2000 PSF (ASSUMED), MODULUS OF SUBGRADE REACTION = 90 PCI
- 5.4 POST BASEPLATES TO BE CENTERED ON FOUNDATIONS
- 5.5 ANCHORS TO BE CAST IN PLACE OR POST INSTALLED, MIN. 5" EMBED, INSTALL PER MANUFACTURER'S INSTRUCTIONS
 - 5.5.1 CAST IN PLACE = 1/2" DIA. HEX HEAD, F 1554 GR. 36
 - 5.5.2 POST-INSTALLED = 1/2" DIA. A36 THREADED ROD WITH HILTI HIT-HY 200 EPOXY (OR SIMILAR)

6. STEEL

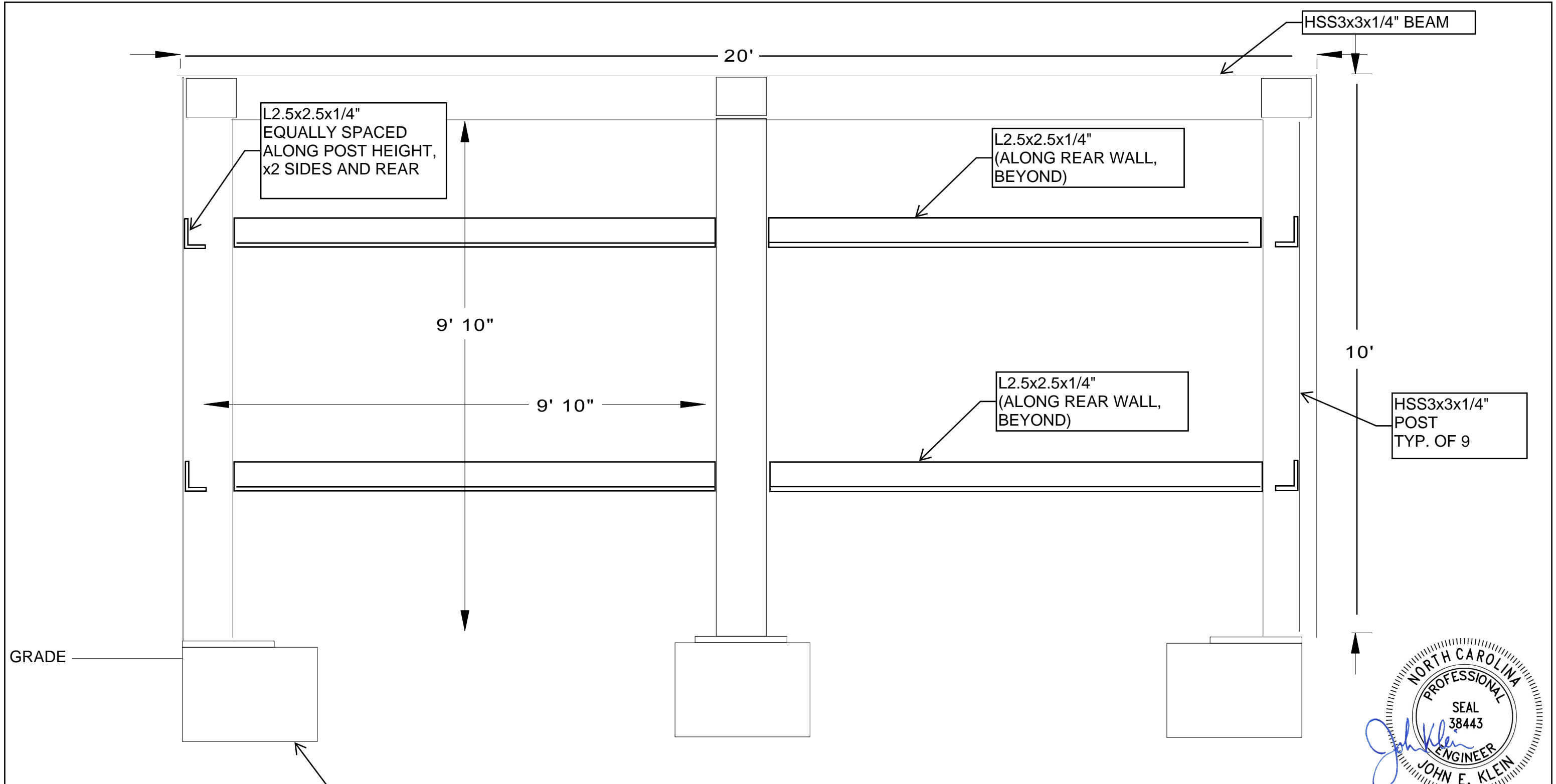
- 6.1 HSS = A500 GR C, Fy = 50 KSI MIN
- 6.2 PLATES, ANGLES, STRAPS / FLAT STOCK = A36, Fy = 36 KSI

7. WELDING

- 7.1 WELDING TO BE IN ACCORDANCE WITH AWS D1.1
- 7.2 FILLER MATERIAL TO BE 70 KSI MIN
- 7.3 ALL JOINTS TO BE FULLY WELDED
- 7.4 MIN WELD SIZE = THICKNESS OF STEEL FOR ROOF STRAP AND FLAT STOCK, MIN WELD SIZE = 3/16" FOR ALL TUBES, PLATES, AND ANGLES



The Welding Machine LLC			
DRAWN Cody	12-9-2020	RESIDENTIAL GARAGE	
CHECKED SG	1-19-2021		
ENGINEER JK	1-19-2021		
APPROVED JK	1-22-2021	SIZE A	DWG NUMBER 0000-0001
SCALE 1 : 1		REV A	SHEET 1 OF 5



L2.5x2.5x1/4"
EQUALLY SPACED
ALONG POST HEIGHT,
x2 SIDES AND REAR

L2.5x2.5x1/4"
(ALONG REAR WALL,
BEYOND)

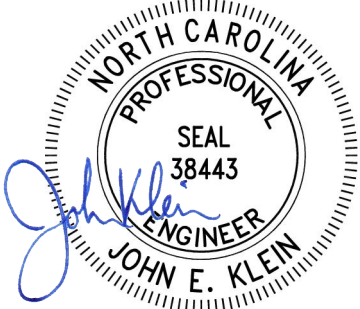
L2.5x2.5x1/4"
(ALONG REAR WALL,
BEYOND)

HSS3x3x1/4" BEAM

HSS3x3x1/4"
POST
TYP. OF 9

FOUNDATION
MIN. 12" BELOW GRADE
AND 2" ABOVE GRADE
(SEE SHEET 5)

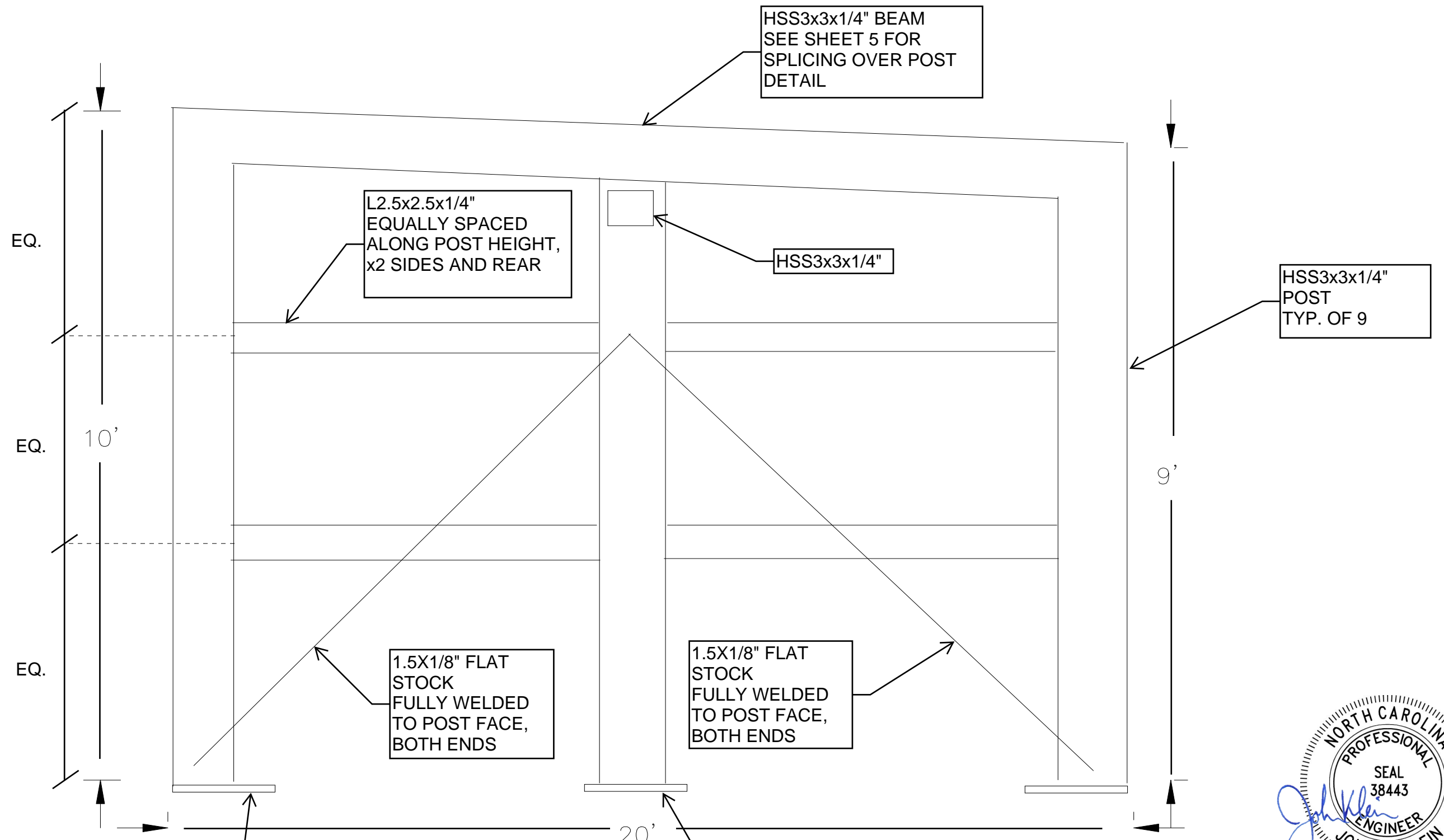
FRONT VIEW
(ELEVATION)



The Welding Machine LLC

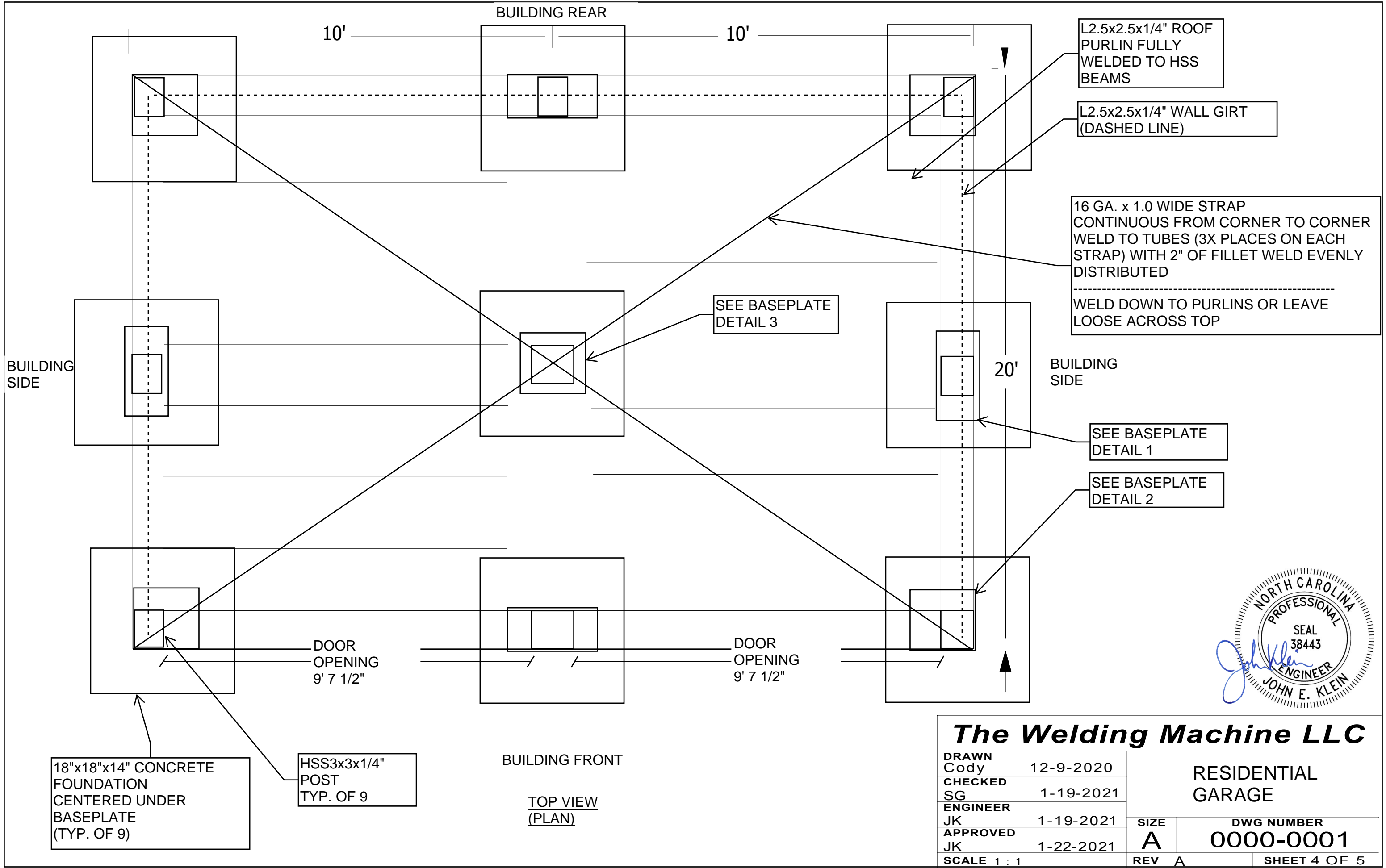
DRAWN	Cody	12-9-2020
CHECKED	SG	1-19-2021
ENGINEER	JK	1-19-2021
APPROVED	JK	1-22-2021
SCALE	1 : 1	

RESIDENTIAL GARAGE		SIZE	DWG NUMBER
		A	0000-0001
REV	A	SHEET 2 OF 5	



SIDE VIEW
(ELEVATION)

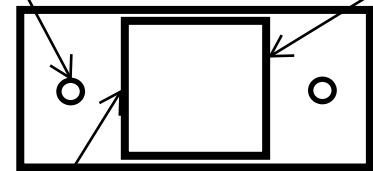
The Welding Machine LLC		
DRAWN Cody	12-9-2020	RESIDENTIAL GARAGE
CHECKED SG	1-19-2021	
ENGINEER JK	1-19-2021	SIZE A
APPROVED JK	1-22-2021	DWG NUMBER 0000-0001
SCALE 1 : 1	REV A	SHEET 3 OF 5



The Welding Machine LLC

DRAWN Cody 12-9-2020 CHECKED SG 1-19-2021 ENGINEER JK 1-19-2021 APPROVED JK 1-22-2021 SCALE 1 : 1	RESIDENTIAL GARAGE SIZE A REV A	DWG NUMBER 0000-0001 SHEET 4 OF 5
---	--	--

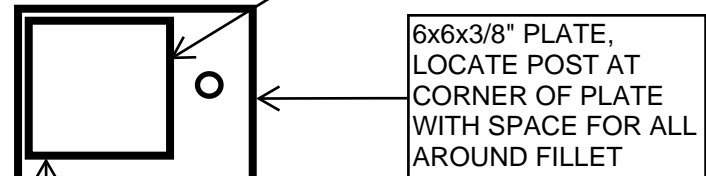
0.625" HOLE FOR 1/2" ANCHOR, SEE DETAIL THIS SHEET



3.5x9x3/8" PLATE CENTERED UNDER POST

HSS3x3x1/4" POST

BASEPLATE DETAIL 1
(PLAN VIEW)
(TYP. OF 4)



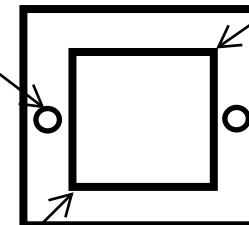
6x6x3/8" PLATE, LOCATE POST AT CORNER OF PLATE WITH SPACE FOR ALL AROUND FILLET

HSS3x3x1/4" POST

0.625" HOLE FOR 1/2" ANCHOR, SEE DETAIL THIS SHEET

BASEPLATE DETAIL 2
(PLAN VIEW)
(TYP. OF 4)

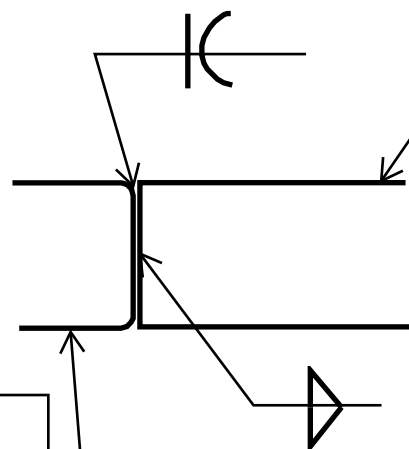
0.625" HOLE FOR 1/2" ANCHOR, SEE DETAIL THIS SHEET



6x6x3/8" PLATE CENTERED UNDER POST

HSS3x3x1/4" POST

BASEPLATE DETAIL 3
(PLAN VIEW)
(TYP. OF 1)



HSS3x3x1/4" BEAM

HSS3x3x1/4" POST

TYPICAL TUBE-END WELDING
(USE FILLET OR FLARE-BEVEL WELDS AS APPROPRIATE FOR EACH JOINT)

HSS3x3x1/4" POST

NUT AND WASHER, TYP.

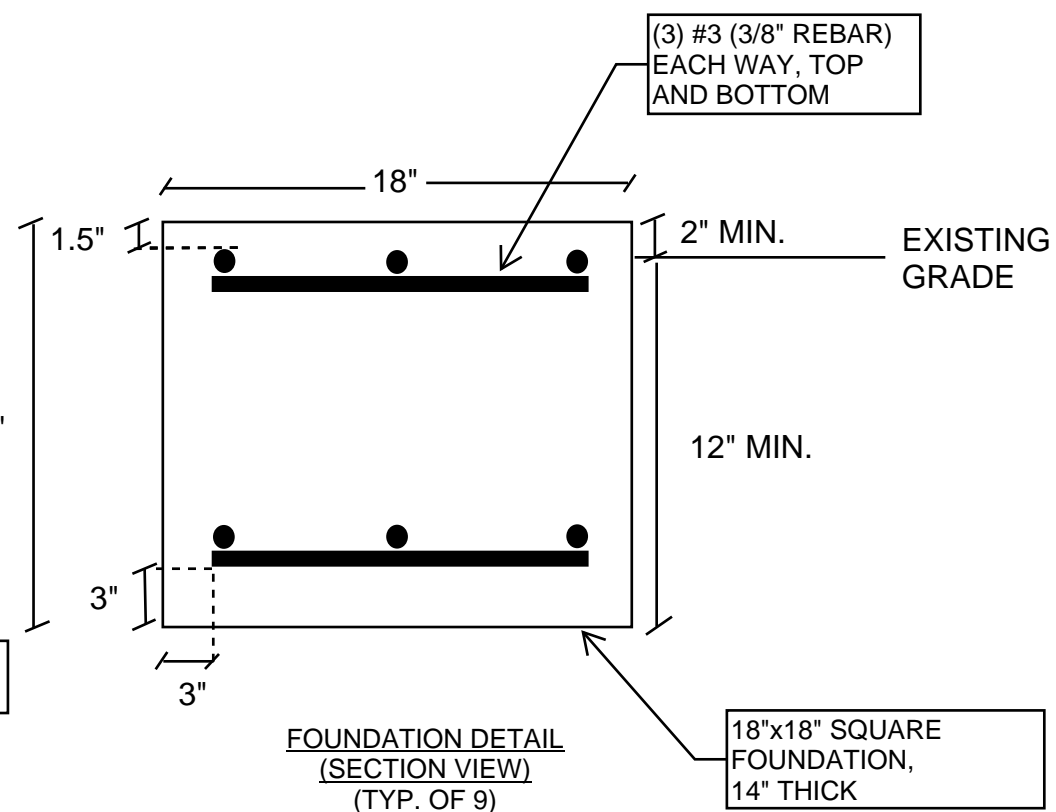
EXISTING GRADE 2" MIN.

1/2" DIA. ANCHOR MIN. EMBED 5"

5" MIN. EMBED

18"x18"x14" FOUNDATION

FOUNDATION
(ELEVATION VIEW)

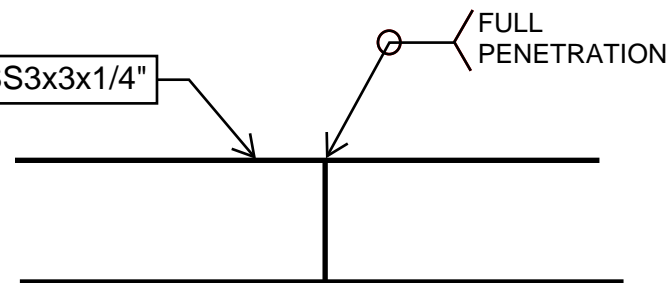


(3) #3 (3/8" REBAR) EACH WAY, TOP AND BOTTOM

EXISTING GRADE

FOUNDATION DETAIL
(SECTION VIEW)
(TYP. OF 9)

18"x18" SQUARE FOUNDATION, 14" THICK



HSS3x3x1/4"

FULL PENETRATION

FULL-STRENGTH TUBE SPLICE (AS REQUIRED)
SPLICES ONLY TO OCCUR OVER POST

NOTE: CENTER BASEPLATE ON FOUNDATION, TYP. OF 9



The Welding Machine LLC			
DRAWN	Cody	12-9-2020	RESIDENTIAL GARAGE
CHECKED	SG	1-19-2021	
ENGINEER	JK	1-19-2021	
APPROVED	JK	1-22-2021	SIZE A
SCALE	1 : 1	REV	DWG NUMBER 0000-0001
		A	SHEET 5 OF 5