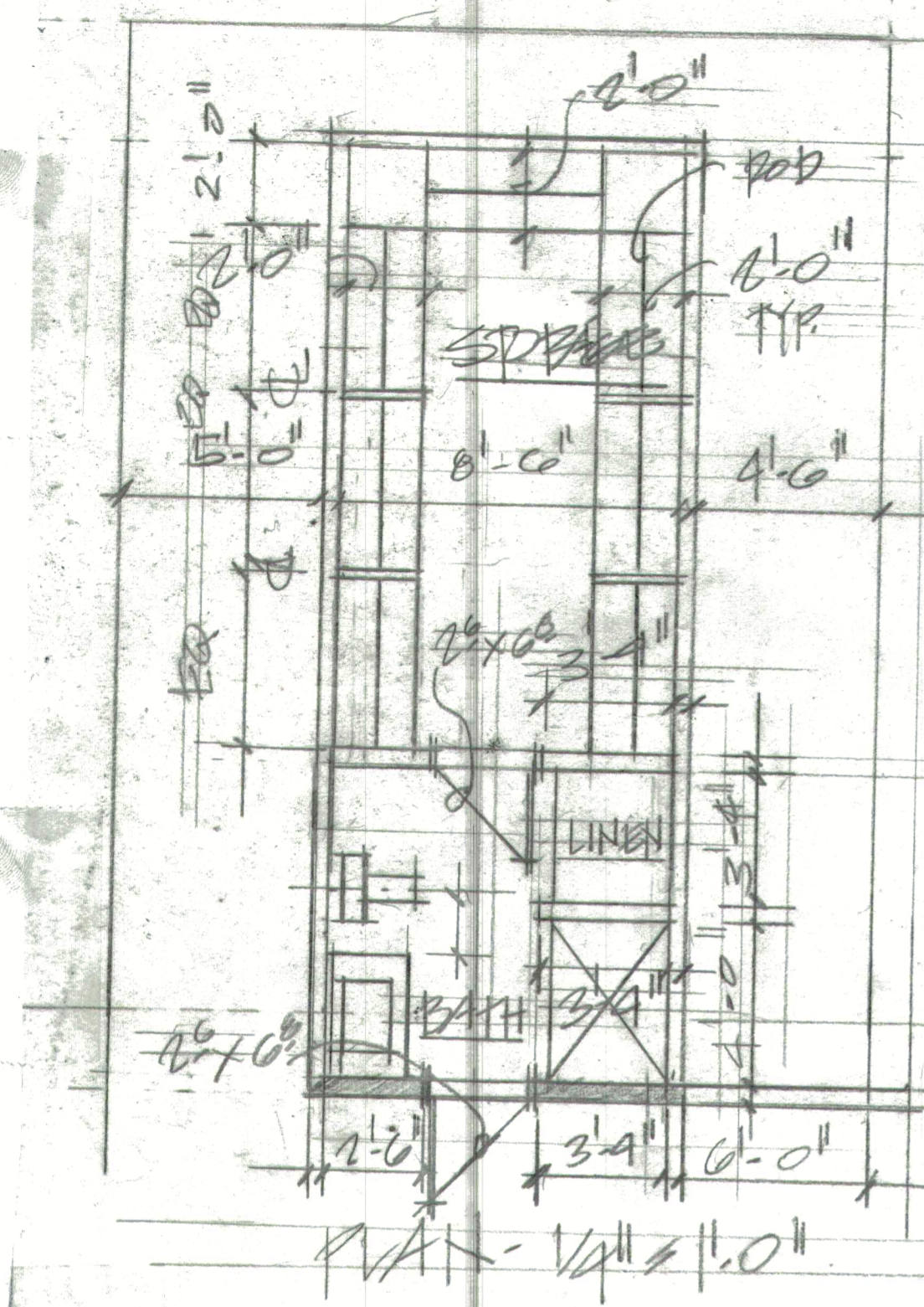


CONSTRUCTION NOTES

1. Provide 5 adjustable shevles at Linen Closet.
2. Provide 3" kick plate at base of closet units (typ.)
3. Provide 3/4", 45 pound melamine furniture-grade board and finish.
4. Provide cam lock fasteners.
5. All vertical panels shall be single piece.
6. Provide access panels at unit rear for eave storage. (typ.)

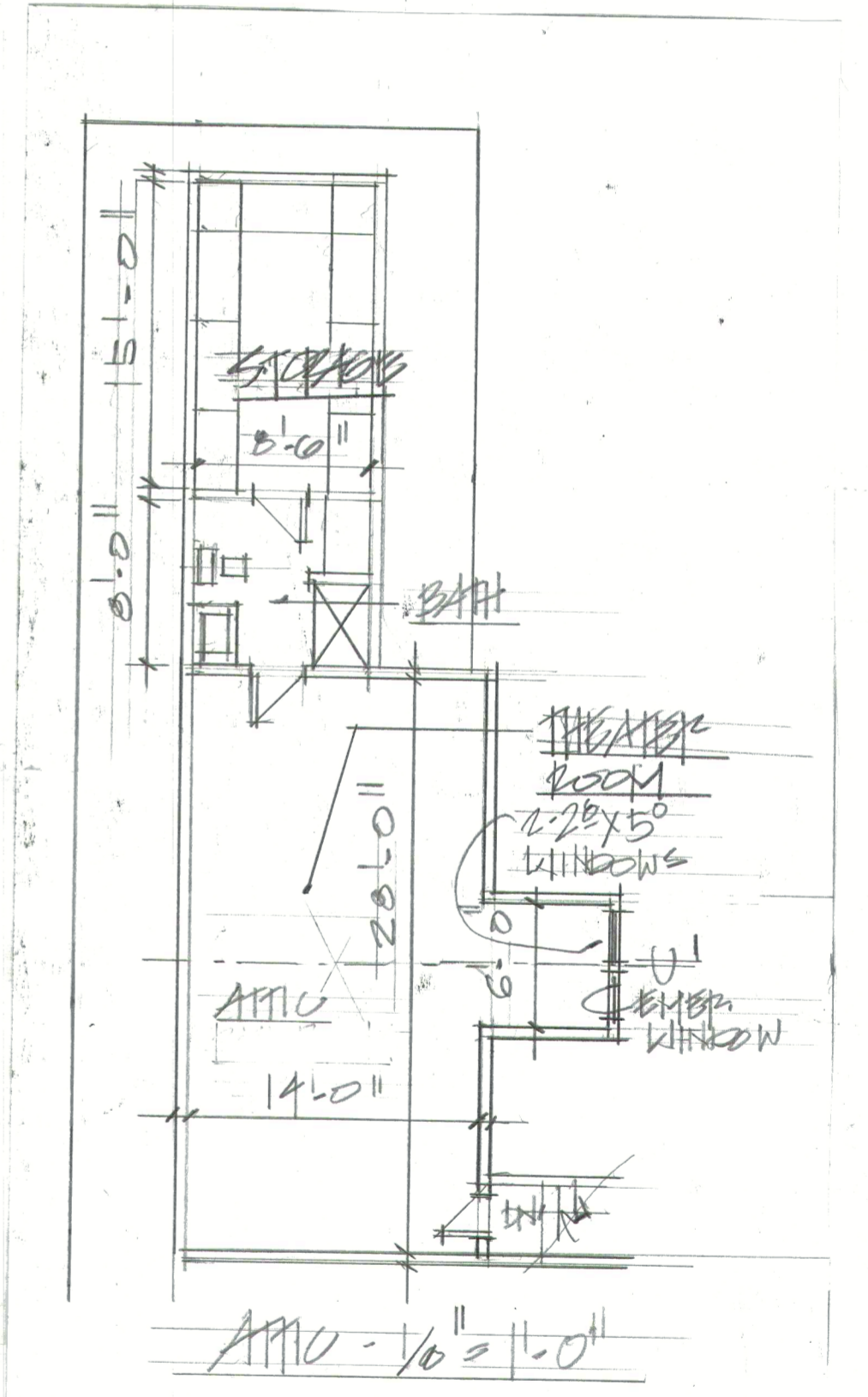
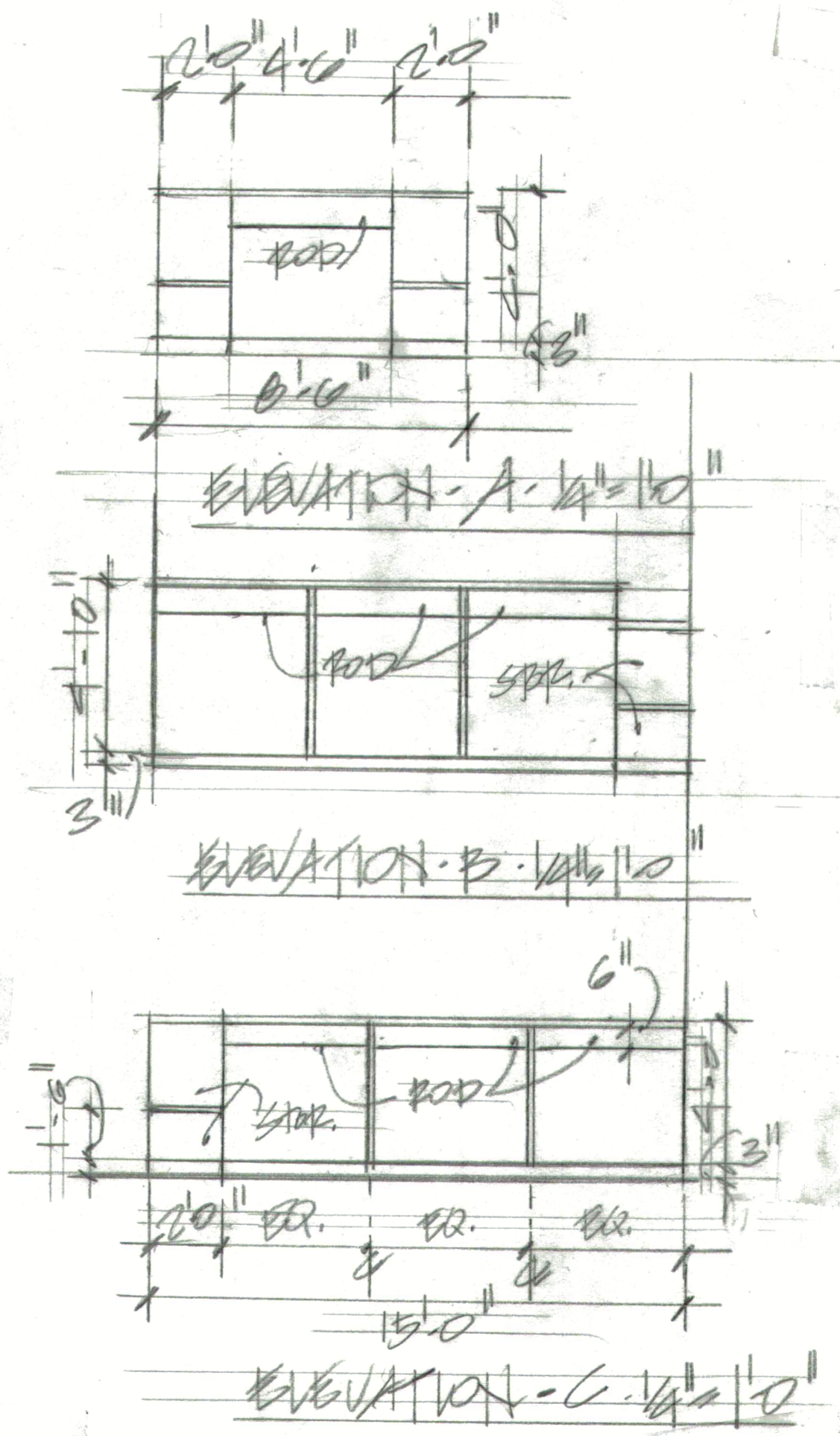
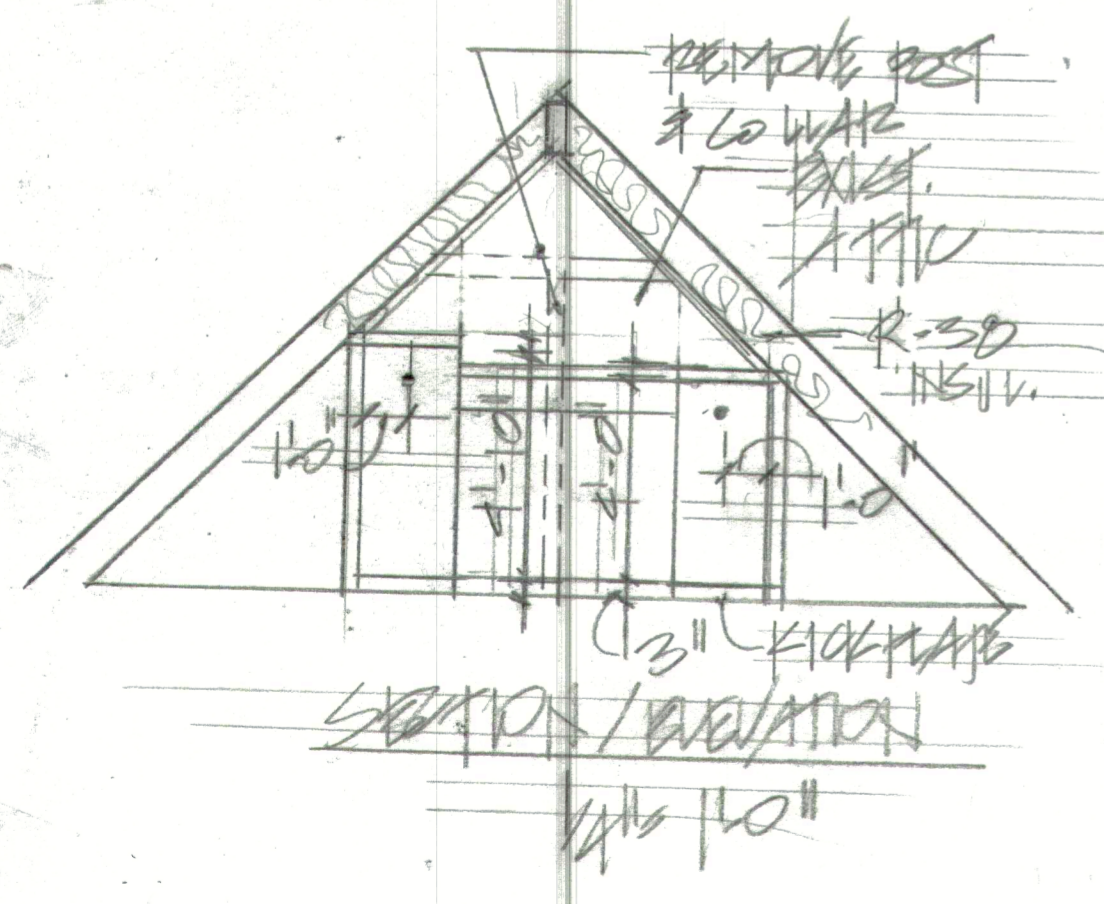


STRAIGHT PORTLAND CEMENT
OR 1/2" MED. DENSITY
FIBER BOARD W/
LAMINATE FINISH OR
MELAMINE TYP.

KEY

EXIST. WALLS

NEW WALLS
2x4 W/ 5/8" OR 3/4" CD.



50 ATKINS PER. FURQUAN, HANA, H.C.

NEW BATH & CLOSET

SCALE: 1/4" = 1'-0"	APPROVED BY:	DRAWN BY: <i>ED</i>
DATE:		REVISED:
PROJECT NAME, ELEVATIONS, SECTION		DRAWING NUMBER
DESIGN SOLUTION 919-504-8100		A.