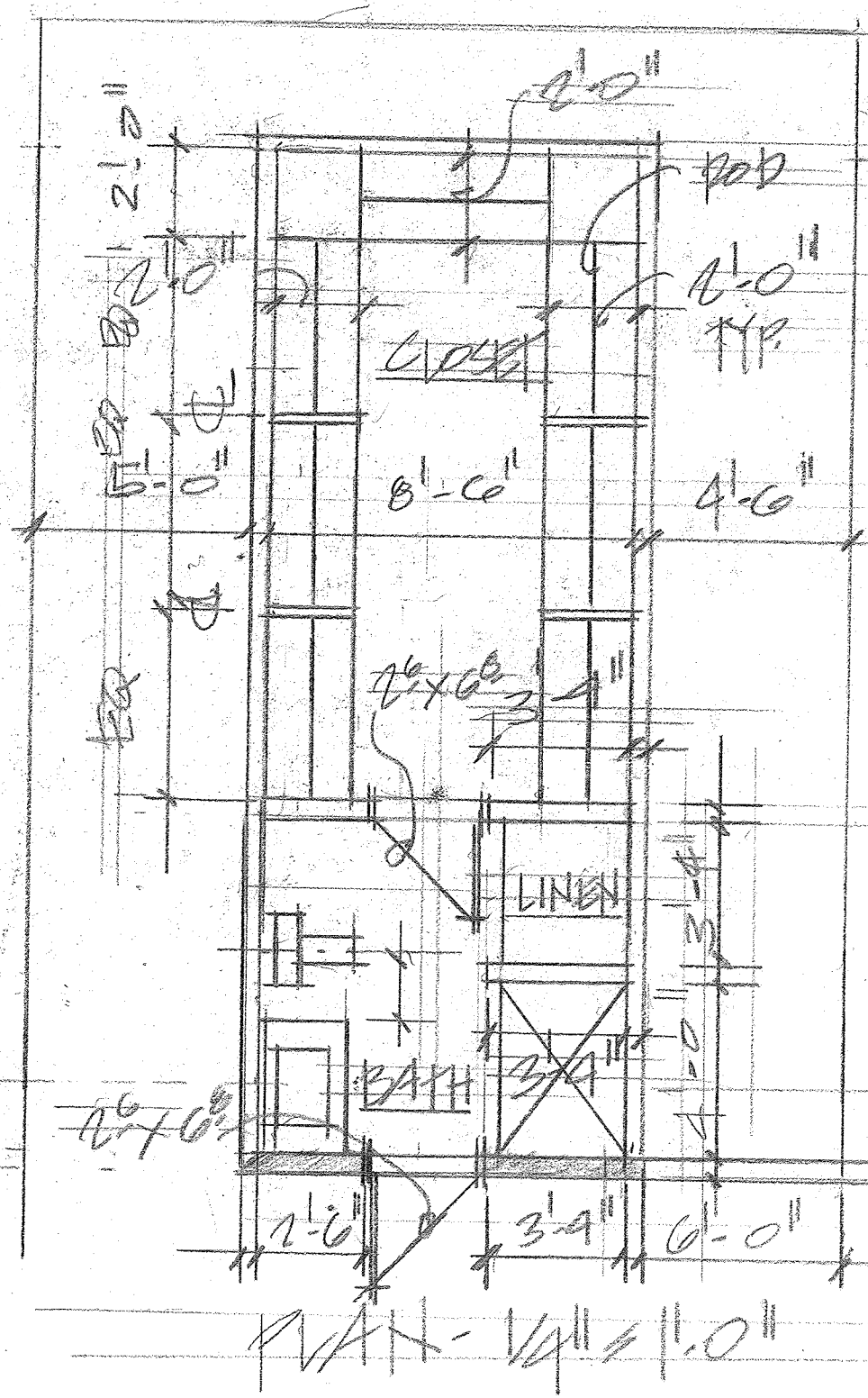


**CONSTRUCTION NOTES**

1. Provide 5 adjustable shevles at Linen Closet.
2. Provide 3" kick plate at base of closet units (typ.)
3. Provide 3/4", 45 pound melamine furniture-grade board and finish.
4. Provide cam lock fasteners.
5. All vertical panels shall be single piece.
6. Provide access panels at unit rear for eave storage. (typ.)

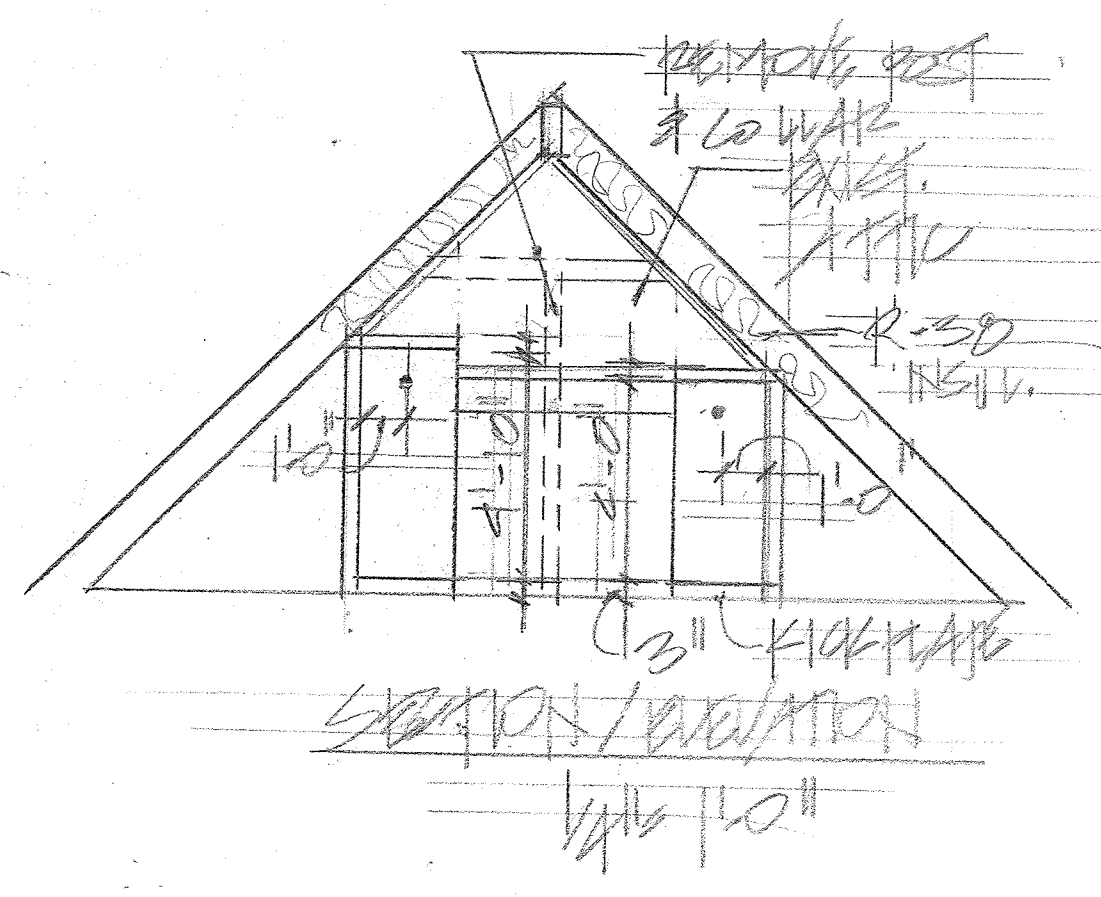
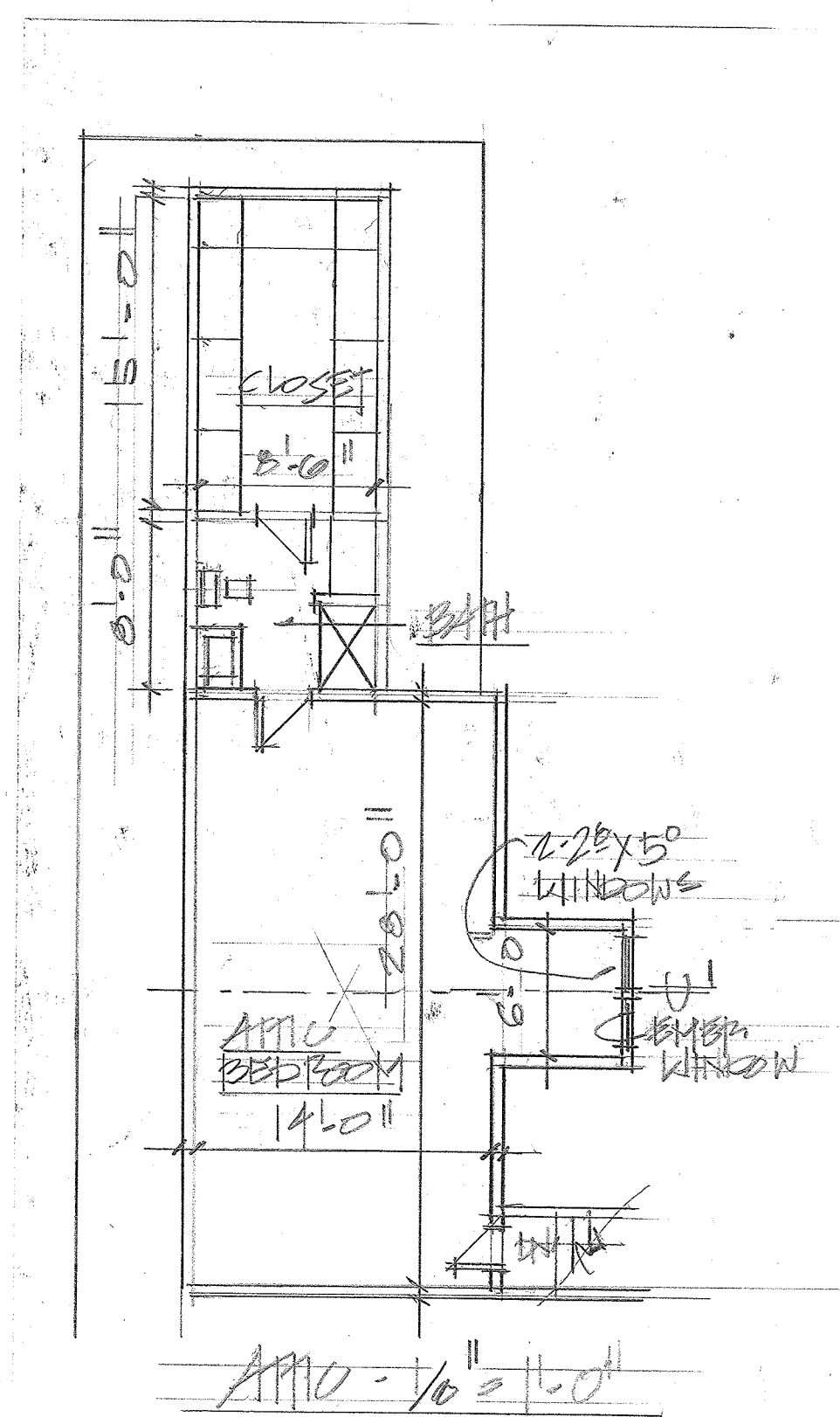
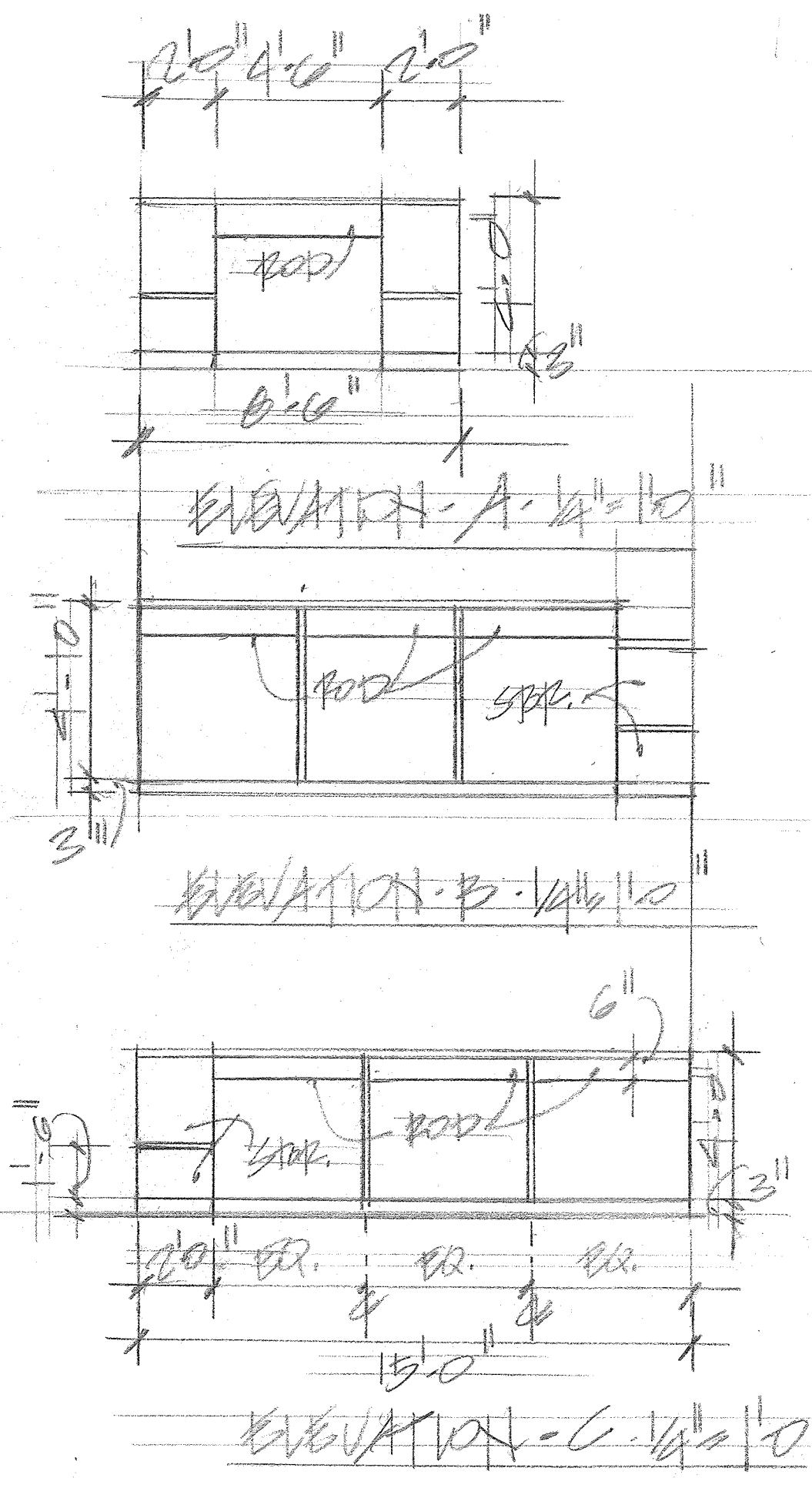


CLOSET COMPONENTS  
OF 1/2" MED. DENSITY  
FIBER BOARD W/  
LAMINATE FINISH OR  
MELAMINE TYP.

KEY

EXIST. WALLS

NEW WALLS  
2x4 CONSTRUCTION  
W/ 1/2" GYP. BOARD.



50 ATKINS P.O. FURNACE, ARIZONA, AZ

**NEW ATTU BATHROOM & CLOSET**

SCALE: 1/4" = 1'-0"	APPROVED BY:	DRAWN BY: [Signature]
DATE:		REVISED:
KLOOR PLAN, ELEVATIONS, SECTION		DRAWING NUMBER
design solutions 919-564-8100		A.1