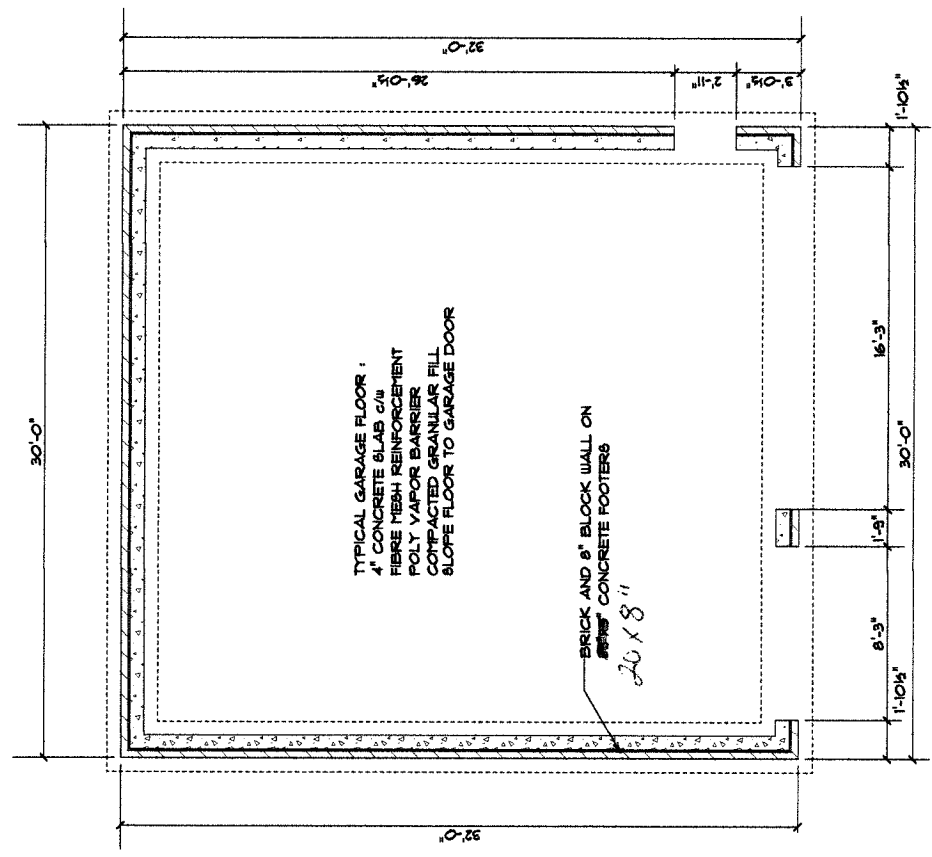




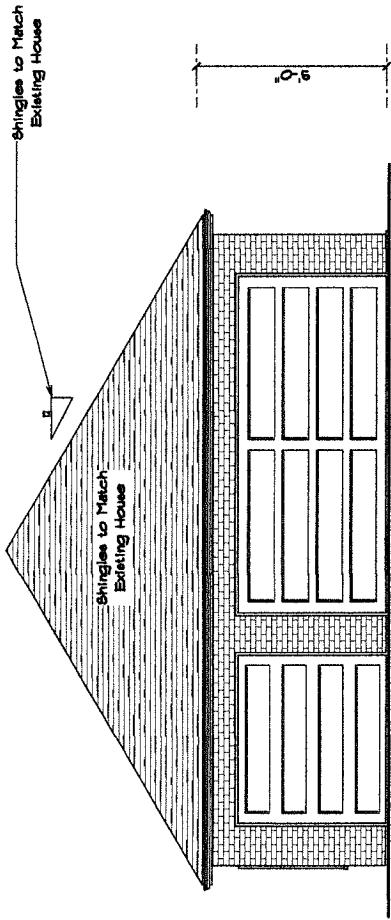
688 Turner Ashby Rd,
Martinsville, VA 24112



TYPICAL GARAGE FLOOR :
4" CONCRETE SLABS c/w
FIBRE MESH REINFORCEMENT
POLY VAPOR BARRIER
COMPACTED GRANULAR FILL
SLOPE FLOOR TO GARAGE DOOR

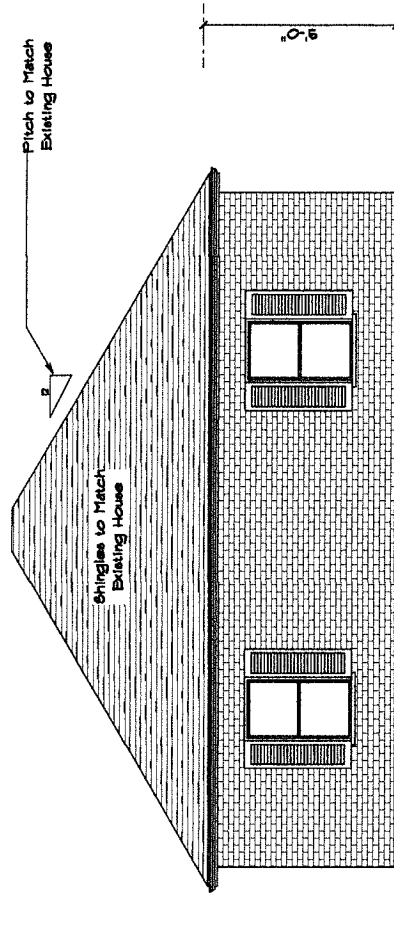
BRICK AND 8" BLOCK WALL ON
8" CONCRETE FOOTERS
26 x 8"

FOUNDATION PLAN
SCALE 1/4" = 1'-0"



FRONT ELEVATION
SCALE: 1/4" = 1'-0"

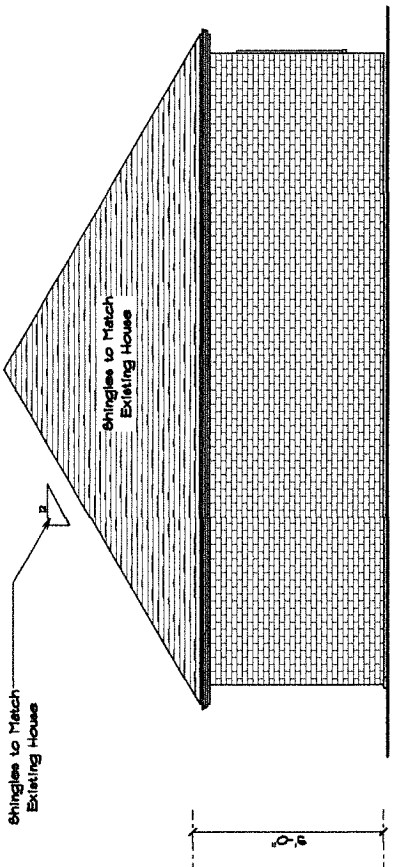
2x10 Headers
Windows + door



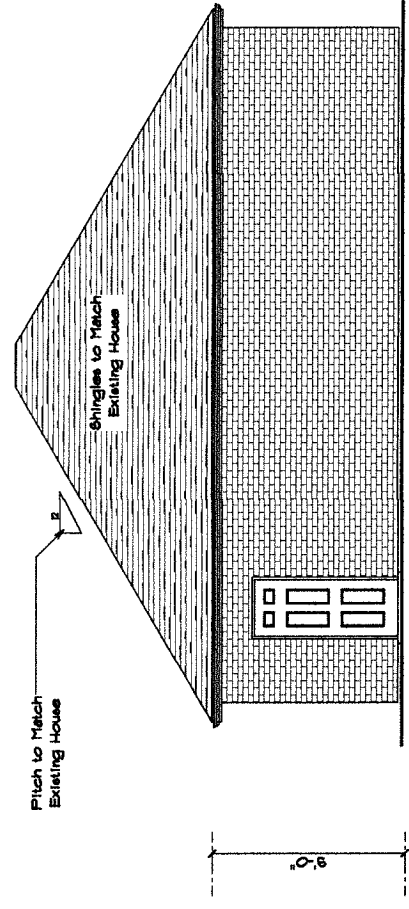
LEFT ELEVATION
SCALE: 1/4" = 1'-0"

688 Turner Ashby Rd,
Martinsville, VA 24112





REAR ELEVATION
SCALE: 1/4" = 1'-0"



RIGHT ELEVATION
SCALE: 1/4" = 1'-0"

688 Turner Ashby Rd,
Martinsville, VA 24112

