



4055 HIGHWAY 401 SOUTH
LILLINGTON, NC 27546



5/12, 130 vULT MAX

"23-6028-02"
3 BEDROOM 2 BATH
1600 SQ. FT.

A HOME DESIGNED FOR:

ANY COUNTY THAT MEETS REQUIREMENTS
OF GE-101.

SEE GE-101 FOR MAXIMUM WIND SPEED

SHEET INDEX

- CP-101 COVER SHEET
- GE-101 GENERAL NOTES
- L-101 LITERATURE PLAN
- EV-101 ELEVATIONS
- EV-102 ELEVATIONS
- EV-103 ELEVATIONS
- EV-104 ELEVATIONS
- AP-101 FLOOR PLAN
- AP-102 OPTION
- AP-201 STRUCTURAL BRACING
- AP-202 STRUCTURAL BRACING DETAILS
- AP-203 STRUCTURAL BRACING DETAILS
- EP-101 ELECTRICAL PLAN
- PP-101 DWV PLAN OFF-FRAME

SHEET INDEX-CONT.

- W-101 WATER LINE PLAN
- SE-101 SECTION PLAN OFF-FRAME
- F-101 PERIMETER FOUNDATION PLAN
- F-102 PERIMETER FOUNDATION DETAILS
- F-103 PERIMETER FOUNDATION DETAILS
- RS-101 RESCHECK
- WORK SHEET 1 VENT CALCS
- WORK SHEET 2 BRACE WALLS CALCS
- SHEARWALL CALCULATIONS SECTION 6 (ATTACHED PAGES 1-30) (PFS REVIEW ONLY)

PFS CORPORATION
Approval Limited to Factory Built Portion Only

State: North Carolina
Harold Raugh
Title: Staff Plan Reviewer
Date: 8/13/20

**THIS MODEL NOT DESIGNED FOR OCEAN HIGH HAZARD AREAS OR SPECIAL MOUNTAIN REGIONS
OR FLOOD ZONES OR SPECIAL WIND REGIONS.**

CHAMPION
MANUFACTURED BEAUTIFULLY™
755 W. BIG BEAVER ROAD, SUITE 1000, TROY, AL 36064
PHONE: 205-511-6500

MODIFICATIONS

PROJECT: 023-6032-02
30'-4" x 60' 3 BD 2 BTH

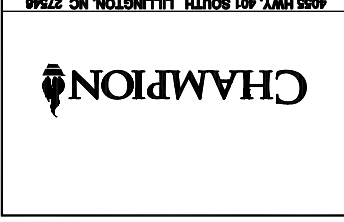
DRAWN BY: STAFF
DATE: 09-26-21
SCALE: NTS

TITLE: COVER PAGE
PLAN

FILENAME: 23-602-02 MOD

SHEET: CP-101

PROPRIETARY AND CONFIDENTIAL
THESE DRAWINGS AND SPECIFICATIONS ARE ORIGINAL.
PROPRIETARY AND CONFIDENTIAL MATERIALS OF CHAMPION.
COPYRIGHT © 2021-2022 BY CHAMPION



STATE	GENERAL:	ELECTRICAL:	PLUMBING:	MECHANICAL:	ENERGY:
NC CODES	2018 NC RESIDENTIAL CODE	2017 NC ELECTRICAL CODE	2018 NC PLUMBING CODE	2018 NC MECHANICAL CODE	2018 NORTH CAROLINA ENERGY CONSERVATION CODE
					2015 IECC for REScheck used for code compliance

ATTENTION LOCAL INSPECTIONS DEPARTMENT

THE FOLLOWING ITEMS HAVE NOT BEEN COMPLETED BY CHAMPION HOMES: HAVE NOT BEEN INSPECTED BY STATE MODULAR CERTIFICATION LABEL CODE COMPLIANCE MUST BE DETERMINED AT THE LOCAL LEVEL.

- FACTORY INSTALLED SUB PANEL BOX SHALL HAVE 2" MIN. CONDUIT FOR WIRE FEEDERS
- MECHANICAL NOTES
 - INTERIOR DOORS SHALL BE UNDERCUT 1" MIN ABOVE FINISHED FLOOR FOR AIR RETURN
 - BATHROOMS SHALL BE PROVIDED WITH A MINIMUM OF .35 AIR CHANGE EVERY HOUR
 - BATH VENT FANS SHALL BE DUCTED TO THE EXTERIOR AND TERMINATE AT AN APPROVED VENT CAP
 - OUTSIDE AIR INTAKES SHALL BE WITH DESIGNED AND INSTALLED BY OTHERS
 - ALL DUCTS SHALL HAVE A MIN. OF R4 INSULATION
 - ALL REGISTER BOOT SHALL BE TAPED OR SEALED OTHERWISE
 - ALL RETURN GRILLS BY FACTORY UNLESS SPECIFIED OTHERWISE
 - OPTIONAL FURNACE USED FOR SUPPLEMENTAL HEATING ONLY. FOR OPTIMAL EFFICIENCY, A HEAT PUMP SHOULD BE INSALLED.
 - ON-SITE CONNECTIONS
 - FOR SITE CONNECTIONS REFER TO SECTION DRAWINGS, FOUNDATION PLANS AND THE DOWN PLAN (ON-RAMP)
 - MULTISECTION UNITS WILL HAVE THE ELECTRICAL CROSSOVERS LOCATED EITHER ON THE END WALLS OR THE CENTER OF THE UNIT. LOCATE THE JUNCTION BOXES OR CONDUITS TO BE COLORED OR MARKED FOR EASY IDENTIFICATION. DO NOT INTERCONNECT CIRCUITS OR CROSS CONDUCTORS.
 - WATER LINES
 - LOCATE AND CONNECT WATERLINE CROSSOVERS LOCATED UNDER THE FLOOR AT THE MARRIAGE LINE, TURN DRAIN LINES ON AND CHECK FOR LEAKS.
 - CONNECT DRAIN DROPOUTS TO THE MAIN DRAIN. BE SURE ALL CONNECTIONS ARE MADE TO COMPLY WITH LOCAL PLUMBING CODES.
 - TWO STORY DEVICES
 - ADDITIONAL VERTICAL CONNECTIONS SEE PLAN SHEETS FOR LOCATIONS AND ACCESS POINTS
 - INTEGRITY OF MARRIAGE LINE RIDGE BEAM SHALL NOT BE COMPROMISED UNLESS SPECIFICALLY DESIGNED FOR AND SHOWN ON APPROVED DEVICES.
 - LOCATE QUICK DISCONNECT (IF APPLICABLE) ON THE FLOOR AT THE MARRIAGE LINE. THE "QUICK DISCONNECT" IS LOCATED UNDER TIGHT AND HAVE BEEN CHECKED FOR LEAKS.

ATTENTION LOCAL INSPECTIONS DEPARTMENT

IF THESE PLANS IS SET ON PLUMBING, OR IS INSTALLED AT A MOUNTAIN REGION OR COASTAL HIGH HAZARD SITE SUCH THAT WIND OR OTHER DESIGN PARAMETERS ARE INCORPORATED INTO THE DESIGN, ALTERATIONS MAY BE REQUIRED TO BRING THE HOME INTO COMPLIANCE WITH THE MORE STRINGENT CONDITIONS.

- ON-SITE CONNECTIONS
 - FOR SITE CONNECTIONS REFER TO SECTION DRAWINGS, FOUNDATION PLANS AND THE DOWN PLAN (ON-RAMP)
 - MULTISECTION UNITS WILL HAVE THE ELECTRICAL CROSSOVERS LOCATED EITHER ON THE END WALLS OR THE CENTER OF THE UNIT. LOCATE THE JUNCTION BOXES OR CONDUITS TO BE COLORED OR MARKED FOR EASY IDENTIFICATION. DO NOT INTERCONNECT CIRCUITS OR CROSS CONDUCTORS.
 - WATER LINES
 - LOCATE AND CONNECT WATERLINE CROSSOVERS LOCATED UNDER THE FLOOR AT THE MARRIAGE LINE, TURN DRAIN LINES ON AND CHECK FOR LEAKS.
 - CONNECT DRAIN DROPOUTS TO THE MAIN DRAIN. BE SURE ALL CONNECTIONS ARE MADE TO COMPLY WITH LOCAL PLUMBING CODES.
 - TWO STORY DEVICES
 - ADDITIONAL VERTICAL CONNECTIONS SEE PLAN SHEETS FOR LOCATIONS AND ACCESS POINTS
 - INTEGRITY OF MARRIAGE LINE RIDGE BEAM SHALL NOT BE COMPROMISED UNLESS SPECIFICALLY DESIGNED FOR AND SHOWN ON APPROVED DEVICES.
 - LOCATE QUICK DISCONNECT (IF APPLICABLE) ON THE FLOOR AT THE MARRIAGE LINE. THE "QUICK DISCONNECT" IS LOCATED UNDER TIGHT AND HAVE BEEN CHECKED FOR LEAKS.

DESIGN INFORMATION

OCCUPANCY	SINGLE FAMILY
CONSTRUCTION TYPE	VB UNP
MAXIMUM WIND SPEED	130 MPH Valt
WIND EXPOSURE	C
SEISMIC CATEGORY	C
FLOOR LIVE LOAD	40 PSF
2ND FLOOR LIVE LOAD	30 PSF
(101 Homes with fire, walkup 3rd floor)	
FLOOR DEAD LOAD	10 PSF
FLOOR LIVE LOAD	20 PSF STANDARD 30 PSF OPTIONAL
ROOF DEAD LOAD	10 PSF
GROUND SNOW LOAD	30 PSF STD/24 G.C. 45 PSF OPT/10 G.C.
FIRE RATING EXT WALL	0 Hrs.
TENANT SEPARATION	0 Hrs.
MAX MEAN ROOF HT.	20.00'

DESIGN INFORMATION

ALL OPERABLE WINDOWS TO INCLUDE INSECT SCREENS. ALL PATIO AND TRIUM DOORS TO INCLUDE INSECT SCREENS. IF HOME IS EQUIPPED WITH WOOD BURNING FIREPLACE, SEE PAGE 22 OF SET UP MANUAL AND MANUFACTURER'S INSTALLATION MANUAL FOR REQUIRED SITE INSTALLATION. VIRGINIA MODS TO HAVE ICE DAM PROTECTION AS REQUIRED BY STATE/LOCAL CODES.

DESIGN INFORMATION

ANY MODEL DESIGNED FOR 150 MPH WIND MAY BE LOCATED IN AREAS OF 4500 FT OR ABOVE. ANY MODEL DESIGNED FOR 150 MPH WIND MAY BE LOCATED IN AREAS OF 4500 FT OR ABOVE.

DESIGN INFORMATION

ANY MODEL DESIGNED FOR 150 MPH WIND MAY BE LOCATED IN AREAS OF 4500 FT OR ABOVE.

DESIGN INFORMATION

ANY MODEL DESIGNED FOR 150 MPH WIND MAY BE LOCATED IN AREAS OF 4500 FT OR ABOVE.

DESIGN INFORMATION

ANY MODEL DESIGNED FOR 150 MPH WIND MAY BE LOCATED IN AREAS OF 4500 FT OR ABOVE.

APPROVAL STAMP

PFS Corporation
Northeast Region
APPROVED
H Raup - 3
8/13/20
Approval limited to
Factory Built Portion

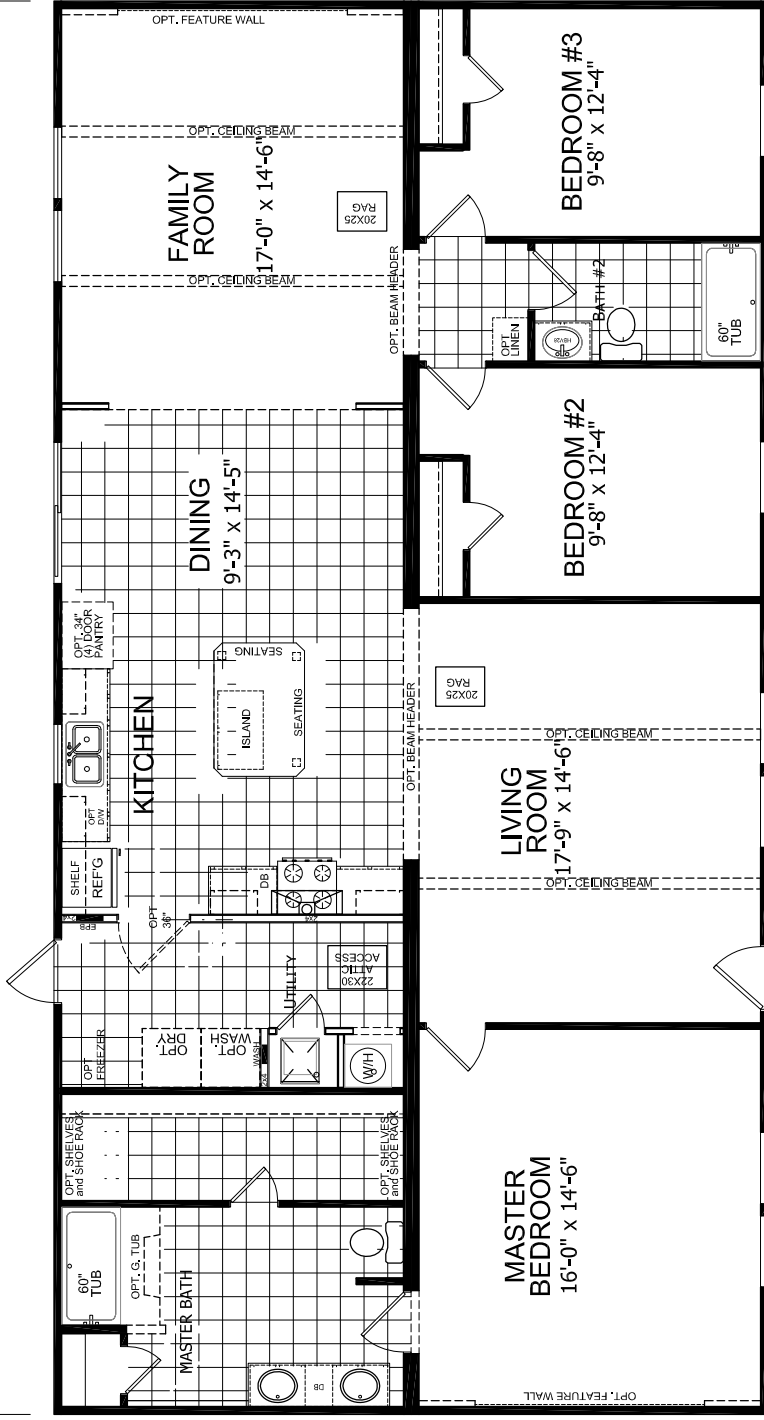
NOTE: ALL HIGH WIND DESIGNS, CONSTRUCTION FASTENING, ETC. BUILT PER CALCULATION MANUAL OR SPECIFIC ENGINEERING (MEETING OR EXCEEDING CHAPTER 45-NC)

MODEL 23-6032-02
TITAN COLLECTION
"The MONTANA"

4 BDRM, 2 BATH
 ACTUAL SIZE: 30'-4" X 60'-0"
 TOTAL AREA: 1820 SQ.FT. AS SHOWN

60'

30'-4"



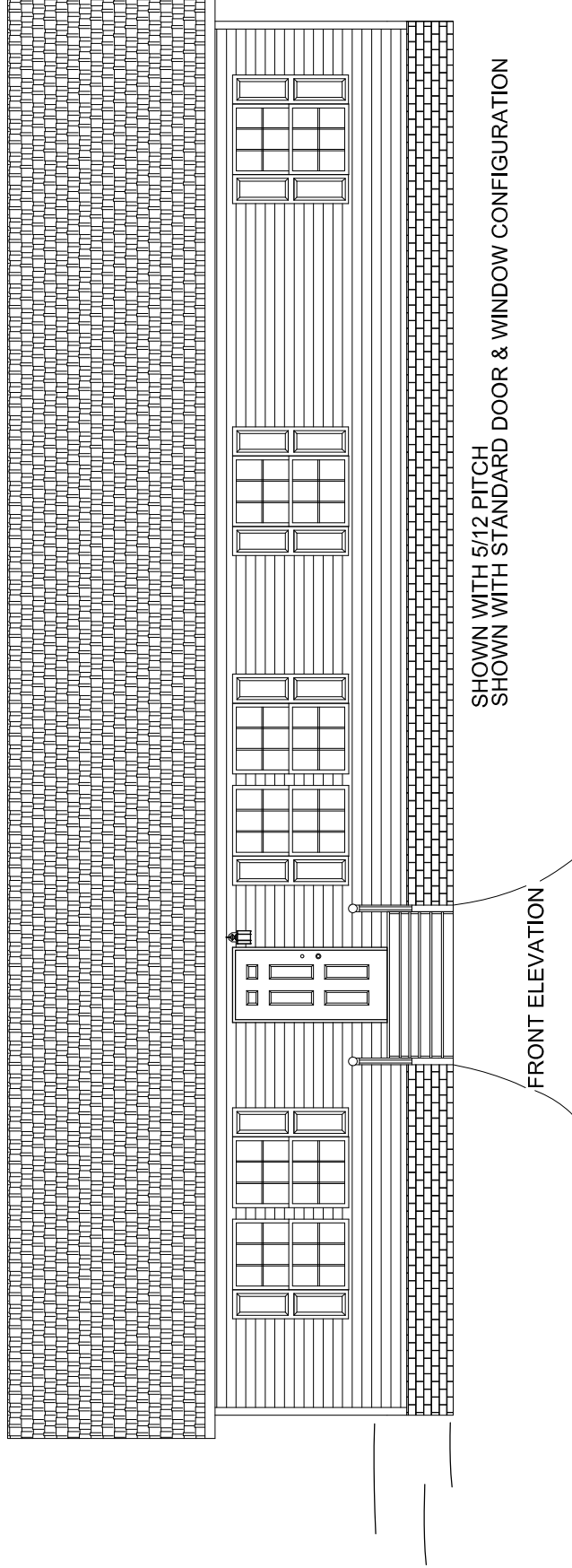
PFS Corporation
Northeast Region
APPROVED
H Raup - 3
 8/13/20
 Approval limited to
 Factory Built Portion

MATERIALS AND SPECIFICATIONS SUBJECT TO CHANGE WITHOUT NOTICE FOR PRODUCTION AND CODE PURPOSES. ALL DIMENSIONS ARE NOMINAL AND APPROXIMATE. SQUARE FOOTAGE IS MEASURED FROM EXTERIOR WALL TO EXTERIOR WALL AND IS A APPROXIMATE FIGURE. THIS DRAWING IS A RENDERING AND IS MEANT FOR SALE PURPOSES ONLY.

CHAMPION MANUFACTURED BEAUTIFULLY™ 755 W. BIG BEAVER ROAD, SUITE 1000, TROY, MI 48064 PHONE: 248-511-6500	PROJECT: 023-6032-02 30'-4" x 60' 3 BD 2 BTH	TITLE: LITERATURE PLAN	SHEET: L-101
	MODIFICATIONS:	DRAWN BY: STAFF DATE: 03-20-21 SCALE: NTS	FILENAME: 23-6032-02 MOD

PROPRIETARY AND CONFIDENTIAL
 THESE DRAWINGS AND SPECIFICATIONS ARE ORIGINAL
 PROPERTY AND CONFIDENTIAL MATERIALS OF CHAMPION.
 COPYRIGHT © 2021 BY CHAMPION

PFS Corporation
Northeast Region
APPROVED
H Raup - 3
8/13/20
 Approval limited to
 Factory Built Portion



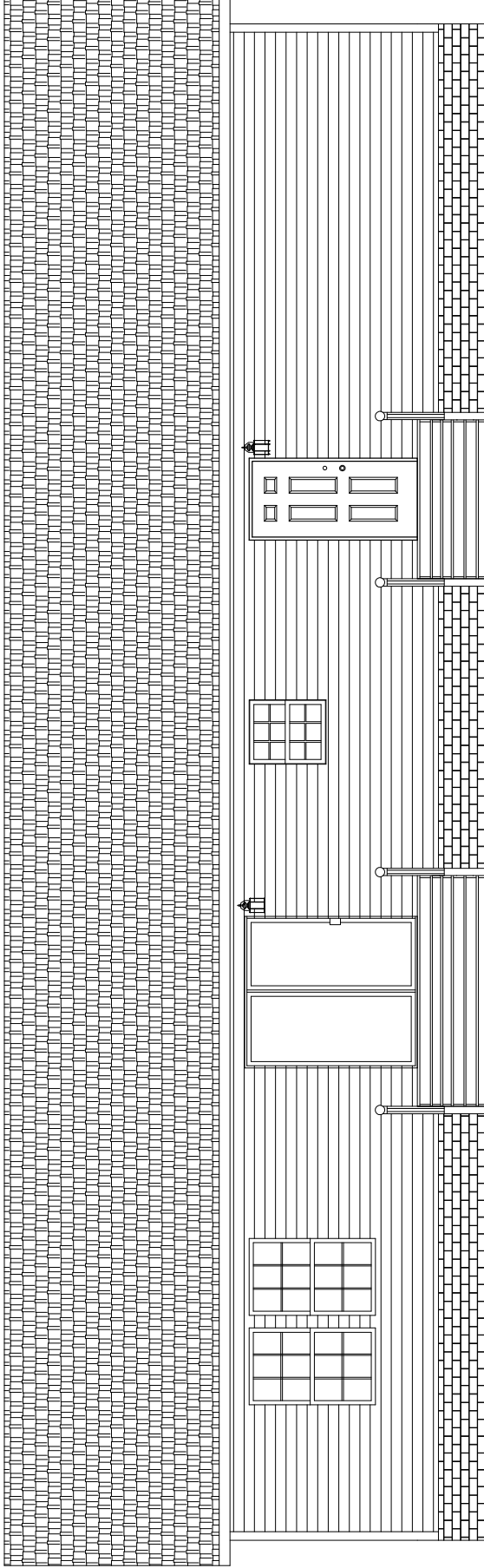
SHOWN WITH 5/12 PITCH
 SHOWN WITH STANDARD DOOR & WINDOW CONFIGURATION

FRONT ELEVATION

CHAMPION MANUFACTURED BEAUTIFULLY™ 755 W. BIG BEAVER ROAD, SUITE 1000, TROY, MI 48064 PHONE: 248-614-6500	PROJECT: 023-6032-02 30'-4" x 60' 3 BD 2 BTH DRAWN BY: STAFF DATE: 03-26-17 SCALE: NTS	TITLE: ELEVATION PLAN FILENAME: 23-6032-02.NOD	SHEET: EV-101 PROPRIETARY AND CONFIDENTIAL THESE DRAWINGS AND SPECIFICATIONS ARE ORIGINAL. PROPRIETARY AND CONFIDENTIAL MATERIALS OF CHAMPION. COPYRIGHT © 2015-2017 BY CHAMPION
	MODIFICATIONS	ELEVATION PLAN	SHEET: EV-101

PFS Corporation
Northeast Region
APPROVED
H Raup - 3
 8/13/20
 Approval limited to
 Factory Built Portion

COMPOSITE SHINGLE RIDGE VENT



REAR ELEVATION

AND RAILS DONE ON SITE BY OTHERS
 FOUNDATIONS, STEPS, PORCHES

CHAMPION
 MANUFACTURED BEAUTIFULLY™
 755 W. BIG BEAVER ROAD, SUITE 1000, TROY, MI 48064
 PHONE: 248-511-6500

MODIFICATIONS

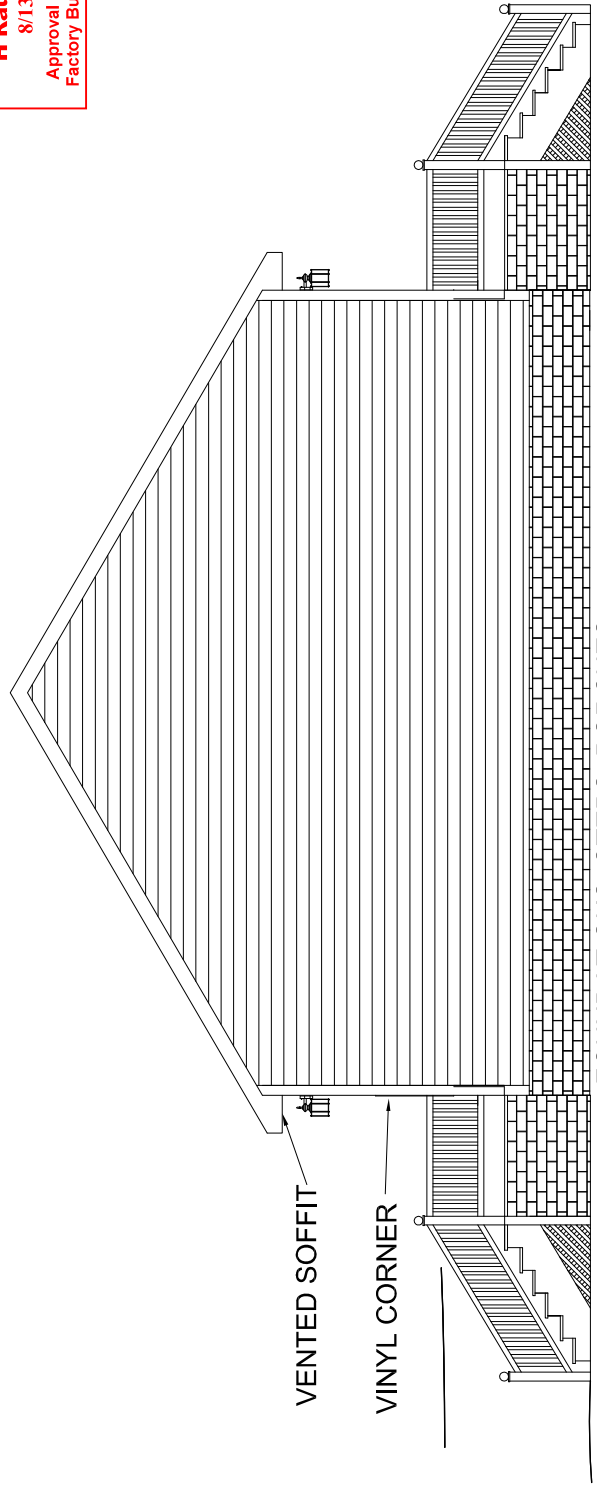
PROJECT: 023-6032-02
 30'-4" x 60' 3 BD 2 BTH
 DRAWN BY: STAFF
 DATE: 03-26-17
 SCALE: NTS

TITLE: ELEVATION
 PLAN

SHEET: EV-102

PROPRIETARY AND CONFIDENTIAL
 THESE DRAWINGS AND SPECIFICATIONS ARE ORIGINAL
 PROPERTY OF PFS CORPORATION
 COPYRIGHT © 2015-2018 BY CHAMPION

PFS Corporation
Northeast Region
APPROVED
H Raup - 3
 8/13/20
 Approval limited to
 Factory Built Portion



FOUNDATIONS, STEPS, PORCHES
 AND RAILS DONE ON SITE BY OTHERS
 RIGHT ELEVATION

CHAMPION
 MANUFACTURED BEAUTIFULLY™
 755 W. BIG BEAVER ROAD, SUITE 1000 TROY, MI 48064
 PHONE: 248-514-5555

MODIFICATIONS

PROJECT: 023-6032-02
 30'-4" x 60' 3 BD 2 BTH
 DRAWN BY: STAFF
 DATE: 03-28-17
 SCALE: NTS

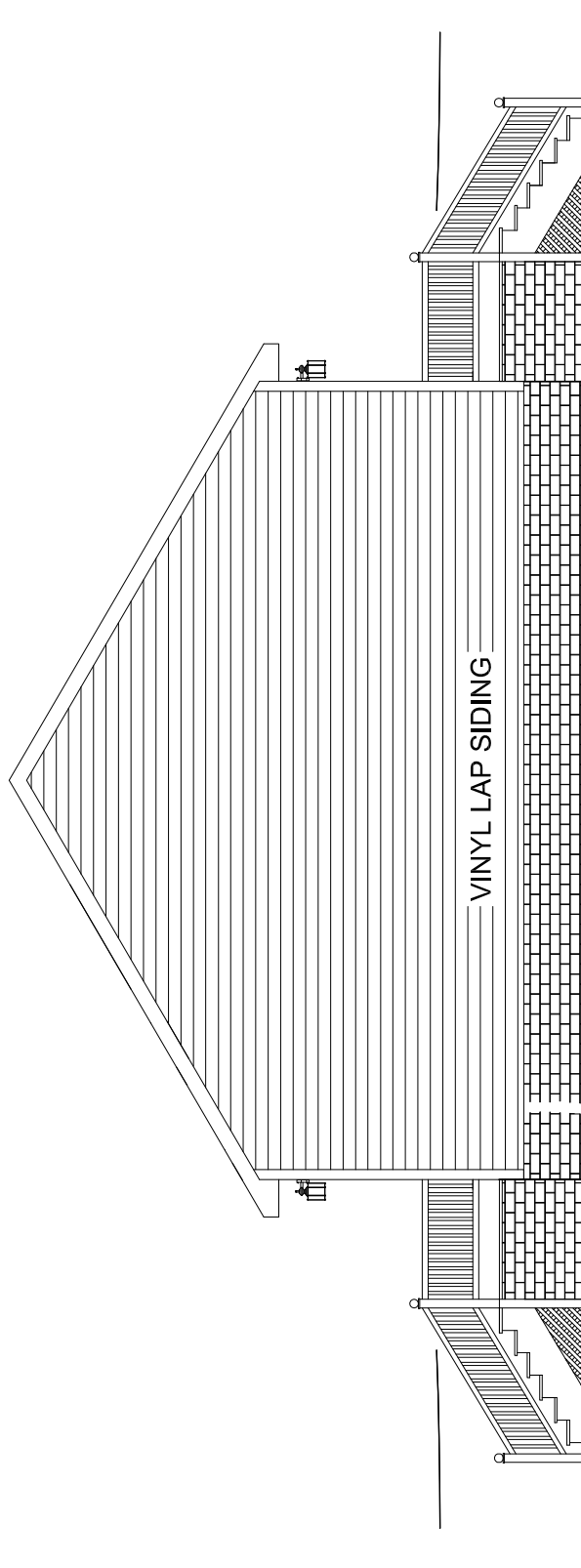
TITLE: ELEVATION PLAN

SHEET:

EV-103

PROPRIETARY AND CONFIDENTIAL
 THESE DRAWINGS AND SPECIFICATIONS ARE ORIGINAL
 PROPERTY AND CONFIDENTIAL MATERIALS OF CHAMPION.
 COPYRIGHT © 2012-2018 BY CHAMPION

PFS Corporation
Northeast Region
APPROVED
H Raup - 3
 8/13/20
 Approval limited to
 Factory Built Portion



LEFT ELEVATION

CHAMPION
 MANUFACTURED BEAUTIFULLY™
 755 W. BIG BEAVER ROAD, SUITE 1000, TROY, MI 48064
 PHONE: 248-511-6500

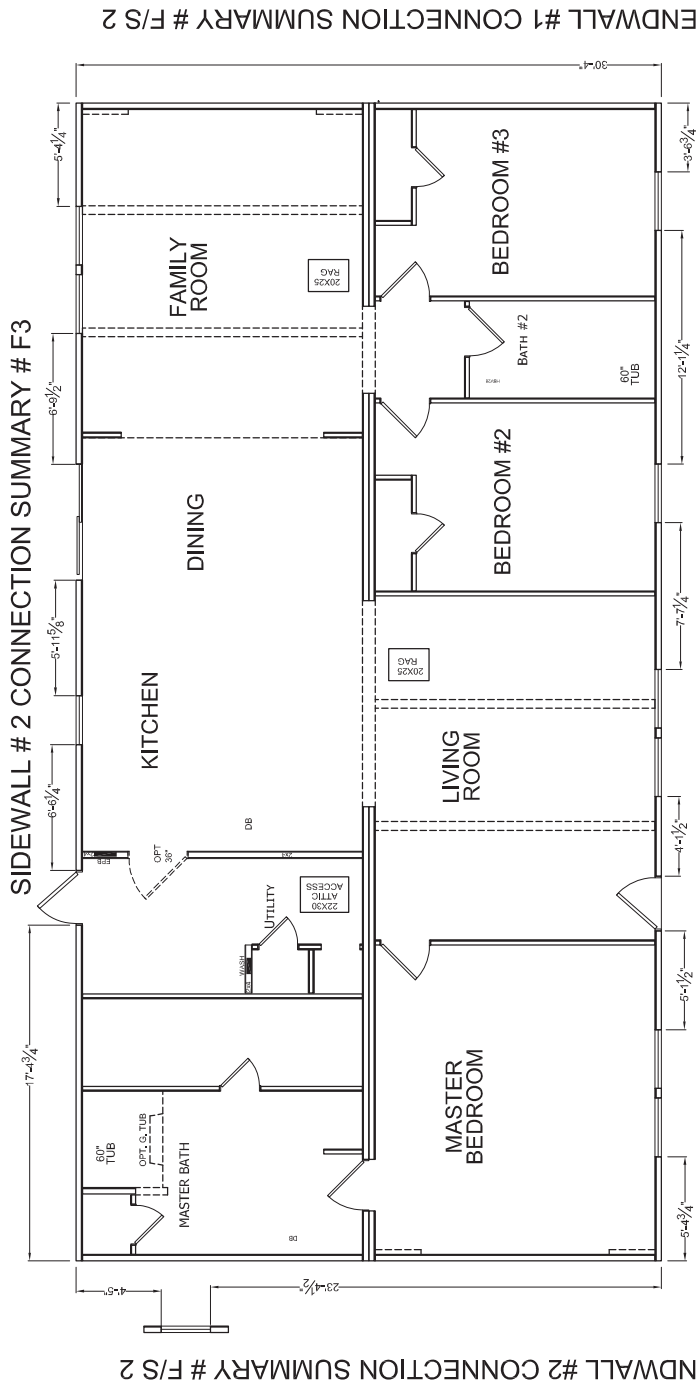
MODIFICATIONS

PROJECT: 023-6032-02
 30'-4" x 60' 3 BD 2 BTH
 DRAWN BY: STAFF
 DATE: 03-26-17
 SCALE: NTS

TITLE: ELEVATION PLAN
 FILENAME: 23-6032-02.NOD

SHEET: EV-104
 PROPRIETARY AND CONFIDENTIAL
 THESE DRAWINGS AND SPECIFICATIONS ARE ORIGINAL
 PROPRIETARY AND CONFIDENTIAL MATERIALS OF CHAMPION.
 COPYRIGHT © 2017-2018 BY CHAMPION

SEE STRUCTURAL BRACING SUMMARY AP202 FOR MORE DETAILS



ENDWALL #1 CONNECTION SUMMARY # F/S 2

ENDWALL #2 CONNECTION SUMMARY # F/S 2

PFS Corporation
Northeast Region
APPROVED
H Raup - 3
8/13/20
 Approval limited to
 Factory Built Portion



08/11/2020

CHAMPION MANUFACTURED BEAUTIFULLY™ 755 W. BIG BEAVER ROAD, SUITE 1000 TROY, MI 48064 PHONE: 248-511-5555	PROJECT: 023-6032-02 30'-4" x 60' 3 BD 2 BTH DRAWN BY: STAFF DATE: 03-28-17 SCALE: 3/16" = 1'-0"	TITLE: STRUCTURAL BRACING & CONNECTIONS FILENAME: 23-6032-02.NOD	SHEET: AP-201 PROPRIETARY AND CONFIDENTIAL THESE DRAWINGS AND SPECIFICATIONS ARE ORIGINAL. PROPRIETARY AND CONFIDENTIAL MATERIALS OF CHAMPION. COPYRIGHT © 1992-2018 BY CHAMPION
	MODIFICATIONS	ENDWALL #1 CONNECTION SUMMARY # F/S 2	ENDWALL #2 CONNECTION SUMMARY # F/S 2

SHEAR CALCULATIONS

08/11/2020



MODEL No.: 23-6032-02

SERIAL No.:

WIND SPEED.: 130 VULT

Roof 5/12

DESIGNED BY.: CHAMPION HOMES

DATE.: 7/15/2020

CHECKED BY.: JPT

SHEARWALL DIAPHRAGM PANEL SUMMARY

By	CHK'd	LOCATION	EDGE FASTENING*		FIELD FASTENING*		NOTES	CONN. #
			8D	16 GA.	8D	16 GA.		
		ENDWALL #1 (HITCH)	6.0	6.0	12.0	12.0	7/16" OSB BLOCKED 100 FHS (BEDROOM 3)	F/S1
		ENDWALL #2 (REAR)	4.0	4.0	8.0	8.0	7/16" OSB BLOCKED 92 FHS (MASTER BED / BATH)	F/S2
		SIDEWALL #1 (A MODULE)	6.0	6.0	12.0	12.0	7/16" OSB BLOCKED 63 FHS (LIVING)	F3
		SIDEWALL #2 (B MODULE)	6.0	6.0	12.0	12.0	7/16" OSB BLOCKED 69 FHS (KITCHEN / DINING)	F4
		ROOF SHEATHING	6.0	6.0	12.0	12.0	7/16" OSB UNBLOCKED	F5
		INCREASE TO	6.0	6.0	8.0	12.0	7/16" OSB UNBLOCKED	
		WITH	6.0	3.0			O.C. FASTENERS AT PERIMETER	
		BLOCKING DISTANCE	0'		0'		FROM ENDWALLS (ROOF DIAPHRAGM SHEATHING CONNECTION : 128 PLF)	
			5D		5D			
		CEILING SHEATHING	7.0		7.0		1/2" GWB UNBLOCKED (FOAM ADHESIVE MEETS REQUIRED FASTENING)	F7
			8D	15 GA.	8D	15 GA.		
		FLOOR SHEATHING	6.0	2.0	12.0	5.0	19/32" OSB MIN.	F8

* 8D COMMON NAILS (.131" x 2.5")

* ROOF (16 GA. STAPLES)

* FLOOR (8D COMMON NAILS (.131" x 2.5"))

¹ 16 GA. STAPLE (REF. SEC 16 Pg. 14 8D TO 16GA. (Z))

¹ ROOF (16 GA. STAPLE (REF. SEC 16 Pg. 15 14GA. TO 16GA. (Z))

¹ FLOOR (15 GA. STAPLE (REF. SEC 16 Pg. 14 10D TO 15GA. (Z))

SUCTION FASTENER SPACING MUST BE NO GREATER THAN SHEAR DIAPHRAGM FASTENER SPACING

By	CHK'd	LOCATION	FASTENING *	ALT. FASTENER ¹	NOTES
		ROOF ZONE 1	12	5	<div style="border: 2px solid red; padding: 5px; display: inline-block;"> PFS Corporation Northeast Region APPROVED H Raup - 3 8/13/20 Approval limited to Factory Built Portion </div>
		ROOF ZONE 2	11	5	
		ROOF ZONE 3	7	3	
		ROOF ZONE 3 O/H	6	2	
		WALL ZONE 4	12	5	
		WALL ZONE 5	12	5	
		EDGE DIMENSION (Z)	4'	4'	

* 8D COMMON NAILS (.131" x 2.5")

¹ 16 GA. STAPLE (1" MIN. PEN) (REF. SEC 16 Pg. 15 8D TO 16GA. (W))

UPLIFT CONNECTIONS

By	CHK'd	LOCATION	UPLIFT # FASTENING *	ALT. FASTENING *	CONN. #
		TRUSS TIE DOWN	148	(1) SIMPSON SDWC 15600	F9
		TRUSS TIE DOWN (FLAT STRAP)	148	(1) 1 1/2 x 20GA STRAP W/ (4) 0.113 NAILS	
		STUD TO TOP PLATE/CEILING BAND	99	(1) 1 1/2 x 20GA STRAP W/ (2) 0.113 NAILS	F10
		STUD TO TOP PLATE (ALTERNATE)	99	16 GA STAPLES EA. STUD	
		STUD TO FLOOR BAND	13	(1) 1 1/2 x 20GA STRAP W/ (4) 0.113 NAILS	F11
		STUD TO FLOOR BAND (ALTERNATE)	13	16 GA STAPLES EA. STUD	

* QUANTITIES ARE EACH END

** C-2019-2021 ED. SIMPSON CATALOG

(REF. SEC 18 Pg. 17 20GA. STRAP/NAILS)

(REF. SEC 18 Pg. 17 20GA. STRAP/NAILS)

LATERAL CONNECTIONS

By	CHK'd	LOCATION	LOAD (PLF) AT IN. O.C.	LOAD (LBS)	FASTENING *	ALT. FASTENING *	CONN. #
		TRUSS TO TOP PLATE	248	24	496	(6) .131 TOE NAIL OR (3) #10 X 5" TSCREW EA TRUSS	F12
		PLATE TO PLATE	248	5	103.34	15GA. x 2 1/2" STAPLES AT 5" O.C	F13
		PLATE TO STUD	248	16	330.67	(6) 15GA. x 2 1/2" STAPLES EACH END	F14
		BOTTOM PLATE TO FLOOR	248	5	103.34	15GA. x 2 1/2" STAPLES AT 5" O.C.	F15

* STRAP NAIL/STAPLE QUANTITIES ARE EACH END

(SUBSTITUTION REF. SEC 16 Pg. 14 .162 TO .113 & 15GA. (Z))

(SUBSTITUTION REF. SEC 16 Pg. 14 .131 TO 15 GA. (Z))

(SUBSTITUTION REF. SEC 16 Pg. 14 .131 TO #8 WS (Z))

TOP PLATE SPLICES

By	CHK'd	LOCATION	FASTENING	NOTES	CONN. #
		PLATE TO PLATE	(2) ROWS 15GA. X 2 1/2" STAPLES AT 1" O.C.	FACE NAILED 3' MIN SPLICE	F16

(SUBSTITUTION REF. SEC 16 Pg. 15 .162 TO 15 GA. (Z))

UNIT SHEAR & UPLIFT CONNECTIONS

By	CHK'd	LOCATION / LOAD	FASTENING	CONN. #
		ENDWALLS	SHEATHING SHEAR CONN. TO FLOOR BAND AND BOTTOM CHORD W/ (1) ROWS OF 16GA. STAPLES AT (3.7) IN O.C.	F17
		ENDWALLS	SHEATHING UPLIFT CONN. TO FLOOR BAND AND BOTTOM CHORD W/ (1) ROWS OF 16GA. STAPLES AT (3.7) IN O.C.	F18
		ENDWALLS	BOTTOM CHORD TO TOP PLATE W/ .131 x 3" TOENAILS AT 8" IN O.C.	F19
		SIDEWALLS	SHEATHING SHEAR CONN. TO FLOOR BAND W/ (1) ROWS OF 16GA. STAPLES AT (3.7) IN O.C.	F20
		SIDEWALLS	SHEATHING UPLIFT CONN. TO FLOOR BAND W/ (1) ROWS OF 16GA. STAPLES AT (3.7) IN O.C.	F21

(SUBSTITUTION REF. SEC 16 Pg. 14 .131 TO 16 GA. (Z))

(SUBSTITUTION REF. SEC 20 Pg. 14 .162 TO .113 (Z))

CORNER CONNECTIONS

By	CHK'd	LOCATION	FASTENING *	NOTES	CONN. #
		ALL EXTERIOR WALL INTERSECTIONS	(1) ROW(S) #8 SCREWS AT 9.7" O.C	FACE NAILED/SCREWED	F22
		ALTERNATE FASTENER	(1) ROW(S) 3/8" LAG AT 14.4" O.C		

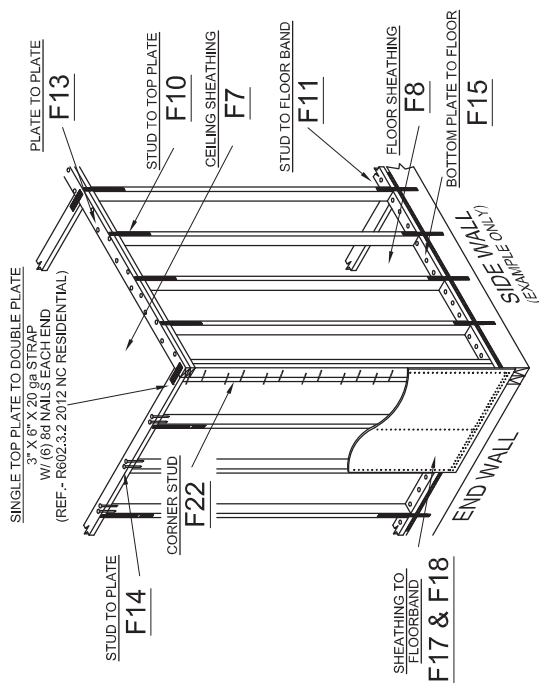
(SUBSTITUTION REF. SEC 16 Pg. 13 LATERAL (Z))

(3/8 LAG REF. SEC 2 Pg. 2 LATERAL (Z-1.6 Cd))

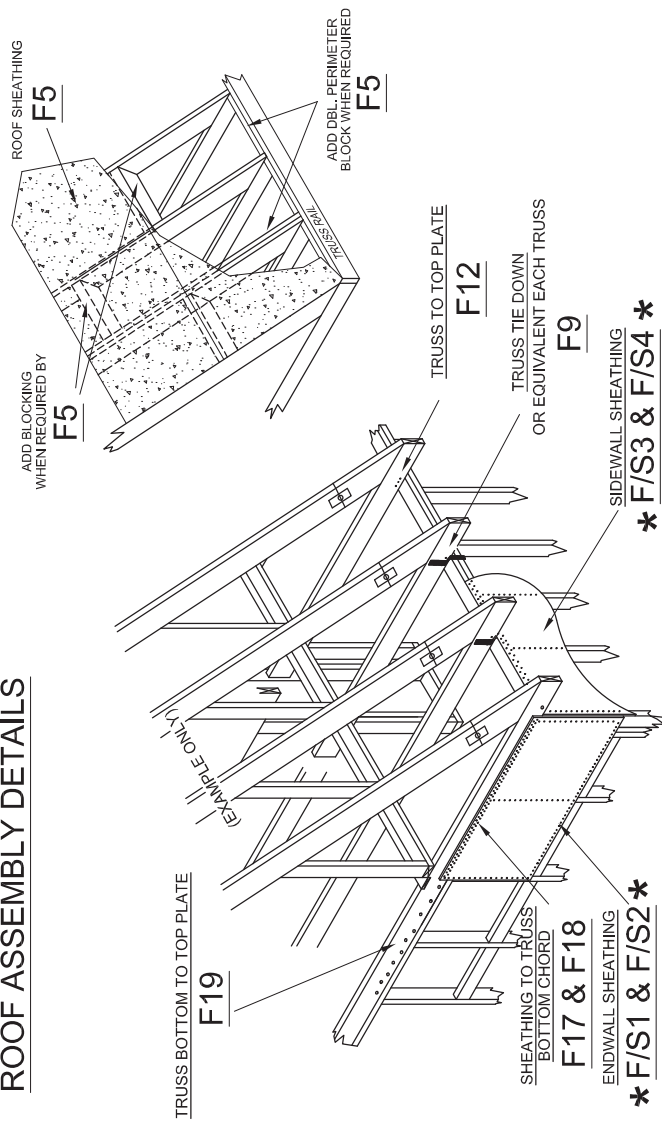
CORNER HOLDOWNS

By	CHK'd	LOCATION	FASTENING *	NOTES	CONN. #
		ALL EXTERIOR WALL CORNERS	3450 LBS MAX UPLIFT MINUS 5319 LBS Σ OF DEAD LOAD = 0 LBS	NO HOLD DOWNS REQUIRED	F23

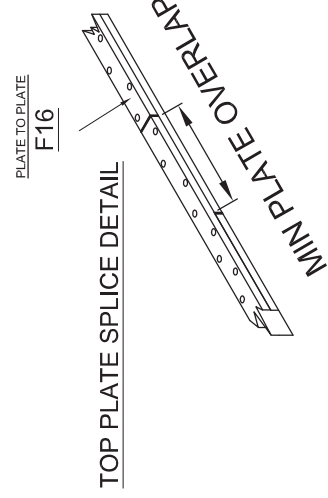
SIDEWALL/ENDWALL DETAIL



ROOF ASSEMBLY DETAILS



08/11/2020



PFS Corporation
Northeast Region
APPROVED
H Raup - 3
 8/13/20
 Approval limited to
 Factory Built Portion

CHAMPION
 MANUFACTURED BEAUTIFULLY™
 755 W. BIG BEAVER ROAD, SUITE 1000, TROY, MI 48064
 PHONE: 248-614-6500

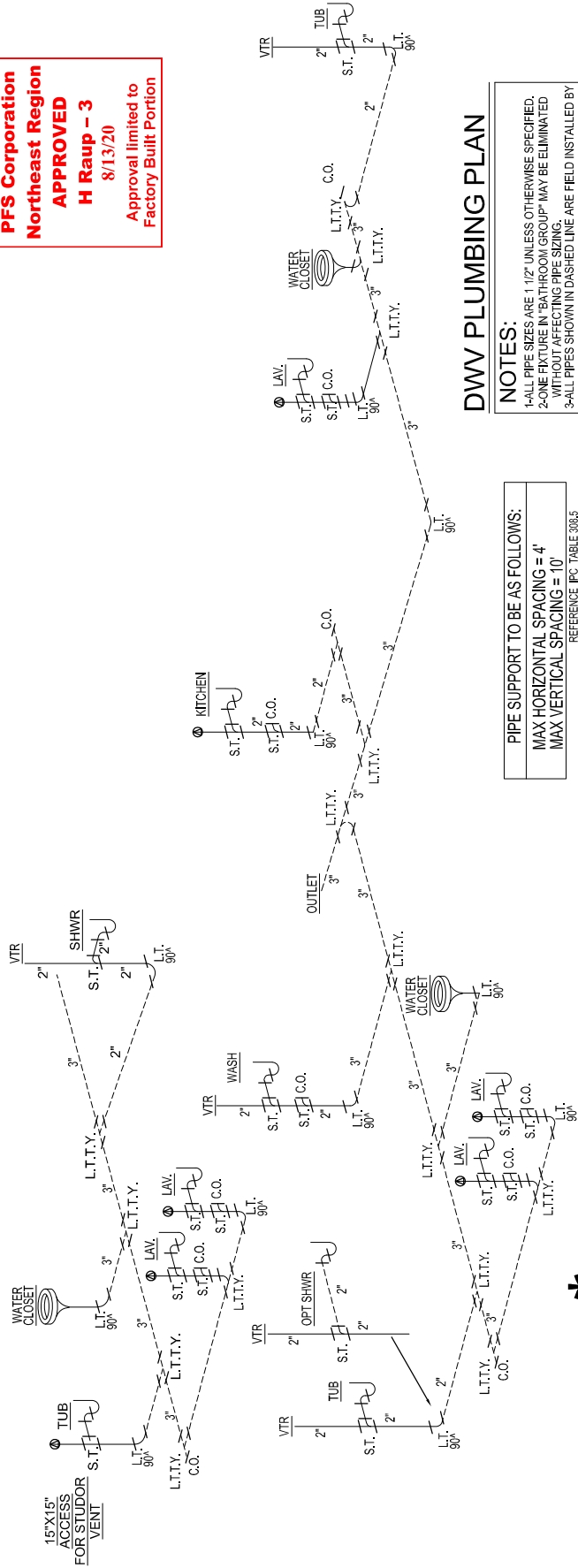
MODIFICATIONS

PROJECT: 023-6032-02
 30'-4" x 60' 3 BD 2 BTH
 DRAWN BY: STAFF
 DATE: 03-09-17
 SCALE: 3/16" = 1'-0"

TITLE: WALL FASTENING

SHEET: AP-203
 PROPRIETARY AND CONFIDENTIAL
 THESE DRAWINGS AND SPECIFICATIONS ARE ORIGINAL
 PROPRIETARY AND CONFIDENTIAL MATERIALS OF CHAMPION
 COPYRIGHT © 2015-2018 BY CHAMPION

OPT MASTER BATH



PFS Corporation
Northeast Region
APPROVED
H Raup - 3
 8/13/20
 Approval limited to
 Factory Built Portion

PIPE SUPPORT TO BE AS FOLLOWS:
MAX HORIZONTAL SPACING = 4'
MAX VERTICAL SPACING = 10'
REFERENCE IPC TABLE 308.5

DWV PLUMBING PLAN

- NOTES:**
- 1-ALL PIPE SIZES ARE 1/2" UNLESS OTHERWISE SPECIFIED.
 - 2-ONE END OF EACH TRAP OR CLEANOUT MUST BE ELIMINATED WITHOUT EFFECTIVE PIPING.
 - 3-ALL PIPES SHOWN IN DASHED LINE ARE FIELD INSTALLED BY OTHERS SUBJECT TO LOCAL JURISDICTION.
 - 4-AUTO VENTS TO BE INSTALLED ON SITE AFTER COMPLETE PLUMBING SYSTEM TEST.
 - 5-WATER STAND TEST MUST BE DONE ON SITE AFTER COMPLETION OF PLUMBING SYSTEM.
 - 6-ALL VENT PIPES MUST TERMINATE MIN. 6" ABOVE ROOF WITH APPROVED WATER TIGHT FLASHING. (P904.1 & P904.3)
 - 7-IF HOME LOCATED IN AREA WHERE 97.5% FOR OUTSIDE DESIGN TEMPERATURE IS 0° OR LESS, EVERY VENT EXTENSION SHALL BE MIN. 3". THIS TO BE DONE ON SITE BY OTHERS. (P904.2)
 - 8-RODENT PROOFING AT ALL SHOWERS, TUBS, TUB SHOWERS TO BE COMPLETED ON SITE BY OTHERS AFTER PLUMBING TEST COMPLETED.

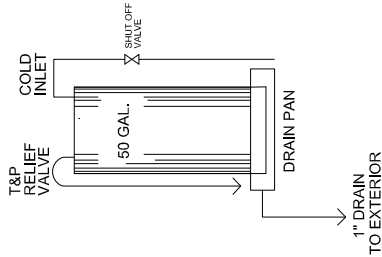
****ATTN. LOCAL BUILDING OFFICIAL****
 ALL P-TRAPS AT TUBS, SHOWERS & TUB/SHOWERS MUST BE RODENT PROOFED AND FINAL DRAFT STOPPING COMPLETED ON SITE BY OTHERS AFTER COMPLETION OF ALL PLUMBING TESTS. ALL OTHER RODENT PROOFING AND DRAFT STOPPING AT FLOOR LEVEL DONE AT FACTORY.
 SEE PAGE AE-101 IN SETUP MANUAL IN HOME FOR DETAILS (SECTION 5, PG 36 QA MANUAL).

SEE Q/A MANUAL FOR APPROVED PLUMBING FIXTURES
 SECTION 4 PAGE 5

<p>CHAMPION MANUFACTURED BEAUTIFULLY™ 755 W. BIG BEAVER ROAD, SUITE 1000, TROY, MI 48064 PHONE: 248-511-6500</p>	<p>PROJECT: 023-6032-02 30'-4" x 60' 3 BD 2 BTH</p>	<p>SHEET: PP-101</p>
	<p>MODIFICATIONS</p>	<p>TITLE: PLUMBING PLAN</p>
<p>DRAWN BY: STAFF DATE: 03-26-21 SCALE: NTS</p>	<p>FILENAME: 23-6032-02 MOD</p>	<p>PROPRIETARY AND CONFIDENTIAL THESE DRAWINGS AND SPECIFICATIONS ARE ORIGINAL PROPRIETARY AND CONFIDENTIAL MATERIALS OF CHAMPION. COPYRIGHT © 2022-2023 BY CHAMPION</p>

WATER HEATER SECURED IN PLACE FOR TRANSIT WITH METAL SHIPPING STRAPS FROM WALL TO WALL

STATE WATER HEATER MODEL SC 6000 (ELECTRIC) COT104 IN 50 NHDS 2 (GAS) MANF. INFORMATION LOCATED IN O.A. MANUAL, SECTION 4, PAGE 04.01.01

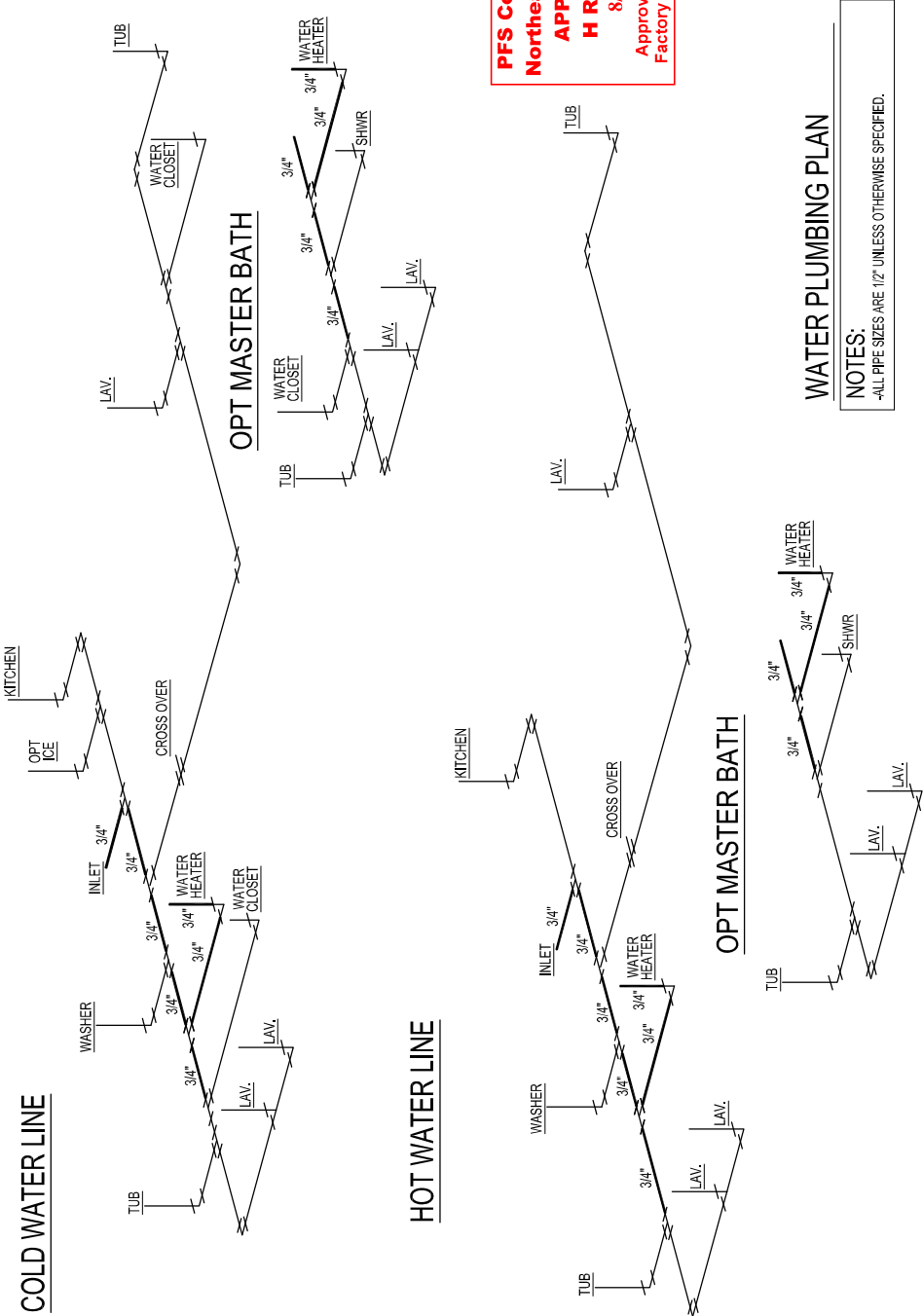


SUPPLY AT WATER HEATER

1. ALL PLUMBING FIXTURES HAVE SEPARATE SHUTOFF VALVES.
2. WATER HEATER SHALL HAVE A SAFETY PAN WITH 1" INCH DRAIN TO EXTERIOR.
3. WATER PIPES INSTALLED IN A WALL SHALL BE INSTALLED WITH INSULATION ON THE HEATED SIDE OF THE WALL INSULATION. WATER PIPING INSTALLED IN AN UNCONDITIONED ATTIC SHALL BE INSULATED WITH AN INSULATION OF R-6.5 MINIMUM.
4. DWV SYSTEM SHALL EITHER ABS OR PVC/DWV ETHYLENE (PEX), CPVC, OR COPPER, WHEN INSTALLED UNDER FLOOR FINISHES SHALL BE INSTALLED TO THE MANUFACTURER'S RECOMMENDED SETTINGS 180-869 F. THE POLYETHYLENE PIPE SHALL BE INSTALLED IN ACCORDANCE WITH THE MANUFACTURER'S LIMITATIONS AND INSTRUCTIONS.
5. BUILDING DRAIN AND CLEANOUTS ARE DESIGNED AND SITE INSTALLED BY OTHERS. SUBJECT TO LOCAL JURISDICTION.
6. TUB ACCESS PROVIDED UNDER HOME UNLESS OTHERWISE NOTED.
7. SHOWER STALLS SHALL BE COVERED WITH NON-ABSORBENT MATERIAL TO A HEIGHT OF 72 INCHES ABOVE FINISH FLOOR OR TO THE TOP OF THE SHOWER CURB.
8. SHUTOFF WITHIN 2' OF WATER SUPPLY AT WATER HEATER.
9. THIS UNIT MUST BE CONNECTED TO PUBLIC WATER SUPPLY AND SEWAGE SYSTEM.
10. IF THESE ARE AVAILABLE, THE MANUFACTURER'S MANUAL INLET PRESSURE OF 80 PSI. SEE SETUP MANUAL, SECTION 6.1.
11. SEE O/A MANUAL FOR APPROVED PLUMBING FIXTURES

SEE O/A MANUAL FOR APPROVED PLUMBING FIXTURES SECTION 4 PAGE 5

PFS Corporation
Northeast Region
APPROVED
H Raup - 3
8/13/20
Approval limited to
Factory Built Portion



WATER PLUMBING PLAN

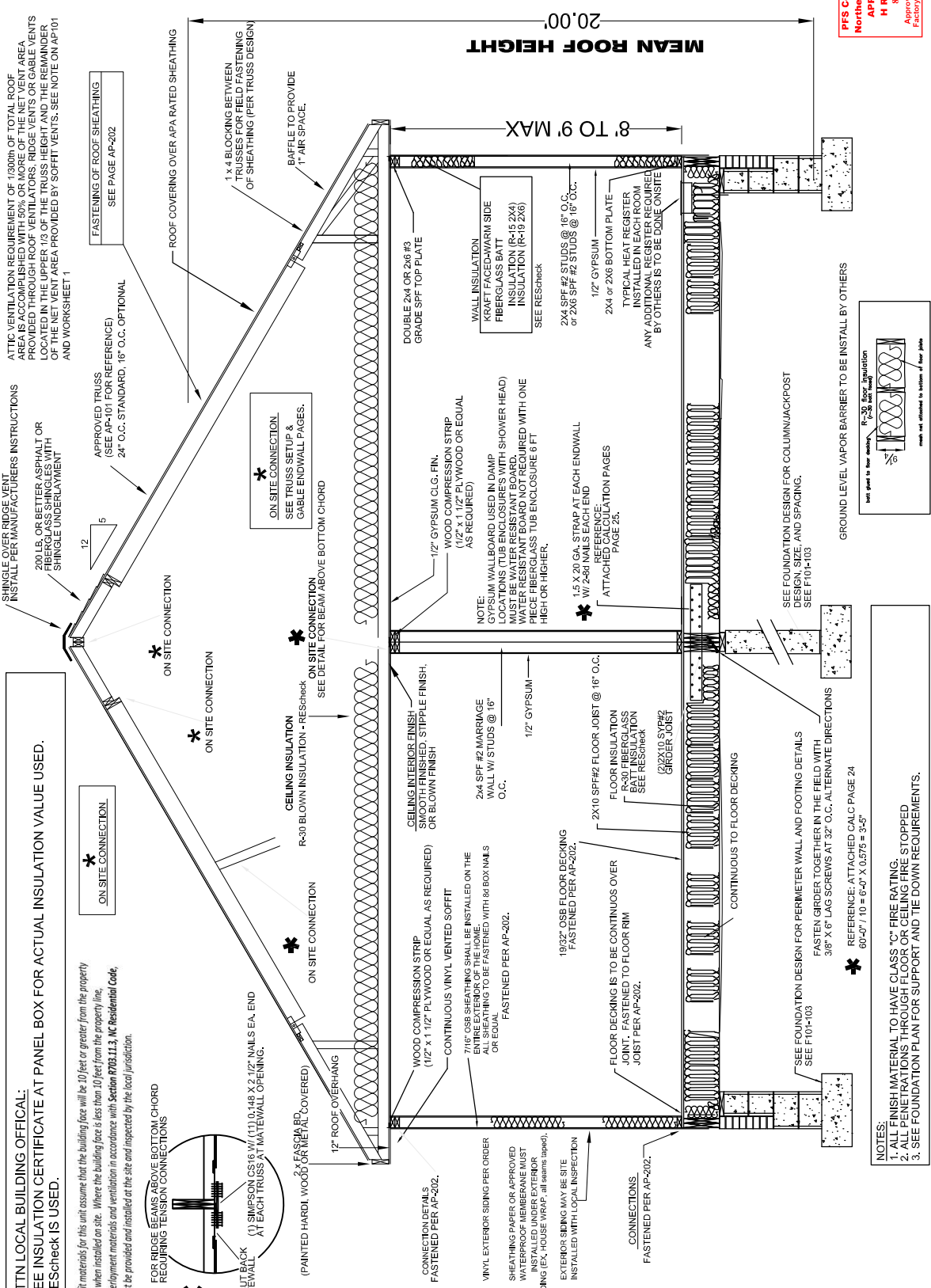
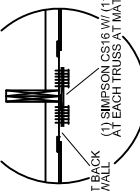
NOTES:
 -ALL PIPE SIZES ARE 1/2" UNLESS OTHERWISE SPECIFIED.

CHAMPION MANUFACTURED BEAUTIFULLY™ 755 W. BIG BEAVER ROAD, SUITE 1000, TROY, MI 48064 PHONE: 248-511-5555	PROJECT: 023-6032-02 30'-4" x 60' 3 BD 2 BTH	TITLE: WATER LINE PLAN	SHEET: WP-101A
	DRAWN BY: STAFF DATE: 03-28-17 SCALE: 3/16" = 1'-0"	FILENAME: 23-6032-02.MXD	PROPRIETARY AND CONFIDENTIAL THESE DRAWINGS AND SPECIFICATIONS ARE ORIGINAL. PROPRIETARY AND CONFIDENTIAL MATERIALS OF CHAMPION. COPYRIGHT © 2016-2017 BY CHAMPION

*** ATTN LOCAL BUILDING OFFICIAL:**
SEE INSULATION CERTIFICATE AT PANEL BOX FOR ACTUAL INSULATION VALUE USED.
RESHECK IS USED.

Soft materials for this unit assume that the building face will be 10 feet or greater from the property line when installed on site. Where the building face is less than 10 feet from the property line, underlayment materials and ventilation in accordance with Section R703.11.3, IRC Residential Code, must be provided and installed at the site and inspected by the local jurisdiction.

*** FOR RIDGE BEAMS ABOVE BOTTOM CHORD REQUIRING TENSION CONNECTIONS**



PFS Corporation
Northeast Region
APPROVED
H Ramp - 3
8/13/20
 Approval limited to
 Factory Built Portion.

SHEET: **SE-101**

TITLE: **OFF-FRAME CROSS SECTION**

PROJECT: **023-6032-02**
30'-4" x 60' 3 BD 2 BTH

DRAWN BY: STAFF
 DATE: 03-26-17
 SCALE: NTS

MODIFICATIONS

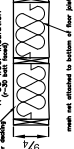
FILENAME: 23-6032-02.NOD

CHAMPION
 MANUFACTURED BEAUTIFULLY™
 755 W. BIG BEAVER ROAD, SUITE 1000, TROY, MI 48064
 PHONE: 248-514-6500

PROPRIETARY AND CONFIDENTIAL
 THESE DRAWINGS AND SPECIFICATIONS ARE ORIGINAL.
 PROPRIETARY AND CONFIDENTIAL MATERIALS OF CHAMPION.
 COPYRIGHT © 1992-2018 BY CHAMPION

NOTES:
 1. ALL FINISH MATERIAL TO HAVE CLASS "C" FIRE RATING.
 2. ALL PENETRATIONS THROUGH FLOOR OR CEILING FIRE STOPPED
 3. SEE FOUNDATION PLAN FOR SUPPORT AND THE DOWN REQUIREMENTS.

* SEE FOUNDATION DESIGN FOR PERIMETER WALL AND FOOTING DETAILS
 FASTEN GRIDER TOGETHER IN THE FIELD WITH
 3/8" X 6" LAG SCREWS AT 32" O.C. ALTERNATE DIRECTIONS
 REFERENCE: ATTACHED CALC PAGE 24
 60'0" / 10' = 6'-0" X 0.575 = 3'-5"



SEE FOUNDATION DESIGN FOR COLUMN/JACKPOST
 DESIGN, SIZE, AND SPACING.
 SEE F10-P103

GROUND LEVEL VAPOR BARRIER TO BE INSTALL BY OTHERS

ATTACHED INSULATION PAGES
 1.5 X 20 GA. STRAP AT EACH ENDWALL
 W/ 2-5/8" NAILS EACH END
 REFERENCE: INSULATION PAGES
 PAGE 25.

2X4 OR 2X6 BOTTOM PLATE
 TYPICAL HEAT REGISTER
 INSTALLED IN EACH ROOM
 ANY ADDITIONAL REGISTER REQUIRED
 BY OTHERS IS TO BE DONE ONSITE

12" GYPSUM
 2X4 or 2X6 STUDS @ 16" O.C.
 2X4 SPF #2 STUDS @ 16" O.C.
 or 2X6 SPF #2 STUDS @ 16" O.C.
 SEE RESCHECK

WALL INSULATION
 KRAFT FACED-WARM SIDE
 FIBERGLASS BATT
 INSULATION (R-15 2X4)
 INSULATION (R-19 2X6)
 SEE RESCHECK

DOUBLE 2X4 OR 2X6 #3
 GRADE SPF TOP PLATE

1 X 4 BLOCKING BETWEEN
 TRUSSES TO PROVIDE
 TIGHTENING
 OF SHEATHING (PER TRUSS DESIGN)

RAFFLE TO PROVIDE
 1" AIR SPACE.

ROOF COVERING OVER APA RATED SHEATHING

FASTENING OF ROOF SHEATHING
 SEE PAGE AP-202

APPROVED TRUSS
 (SEE AP-101 FOR REFERENCE)
 24" O.C. STANDARD, 16" O.C. OPTIONAL

ON SITE CONNECTION
 SEE TRUSS SETUP &
 GABLE ENDWALL PAGES.

ON SITE CONNECTION
 SEE TRUSS SETUP &
 GABLE ENDWALL PAGES.

ON SITE CONNECTION

ON SITE CONNECTION

ON SITE CONNECTION

ON SITE CONNECTION

ON SITE CONNECTION

ON SITE CONNECTION

ON SITE CONNECTION

ON SITE CONNECTION

ON SITE CONNECTION

ON SITE CONNECTION

ON SITE CONNECTION

ON SITE CONNECTION

ON SITE CONNECTION

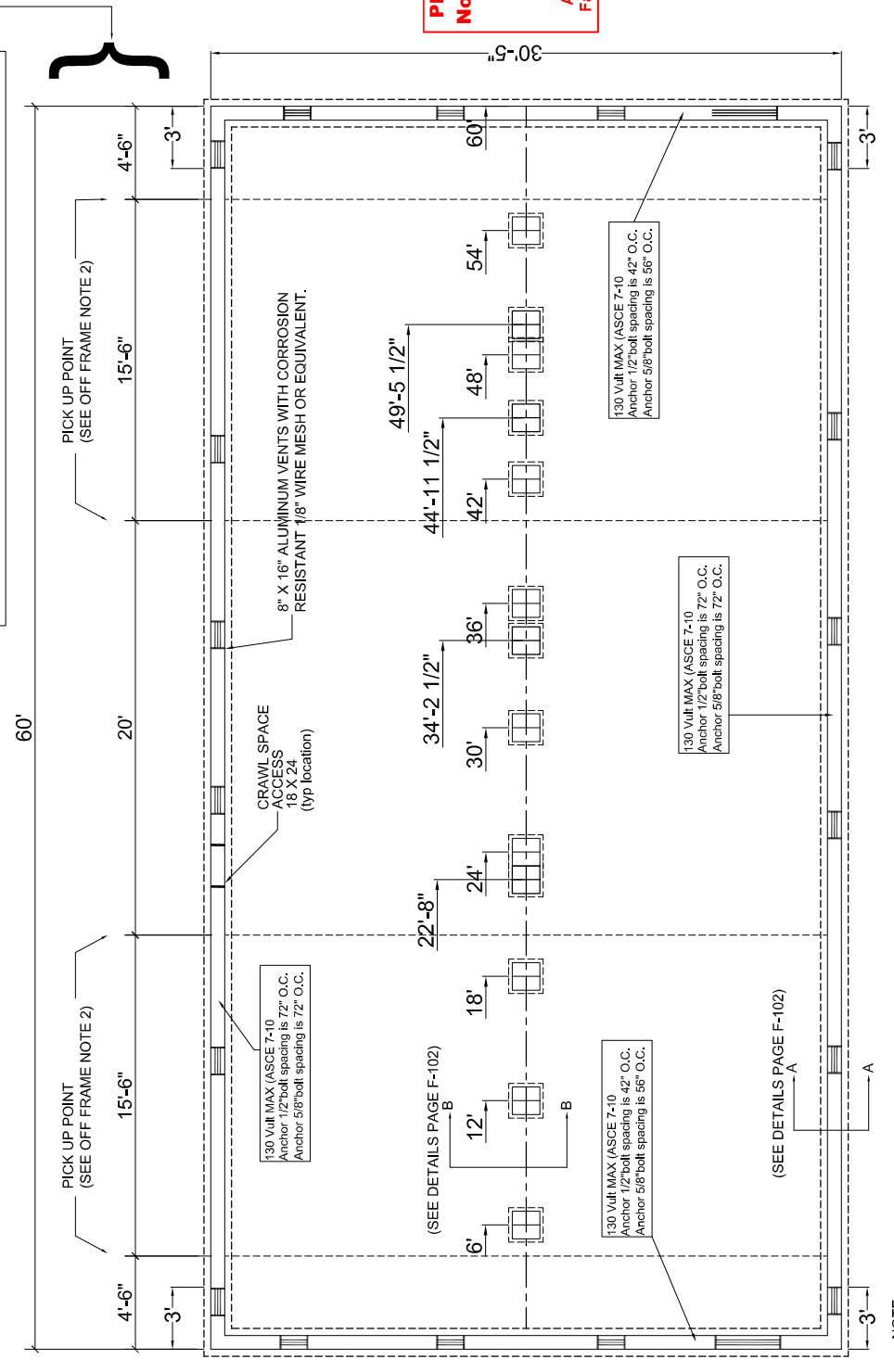
ON SITE CONNECTION

ON SITE CONNECTION

FOUNDATION VENT TO PROVIDE 1sf OF VENT PER EACH 150sf OF CRAWL SPACE AREA
 1820 SF / 150 SF = 12.1
 8'x16' (TYP) VENT = APPROX .5 SF
 12.1 / .5 = APPROX. 24.2 VENTS

NOTES:
 1. SPLICES IN MATE LINE GIRDERS MUST FALL ON A SUPPORT PIER.
 2. PIERS OR POSTS TO BE SPACED PER CHART AND LOCATED UNDER OPENING COLUMN SUPPORTS WHEN OPENING WIDTH IS 4' OR GREATER.
 3. FOR SEISMIC DESIGN CATEGORY D0, D1 & D2 FOUNDATION DESIGNED BY OTHERS

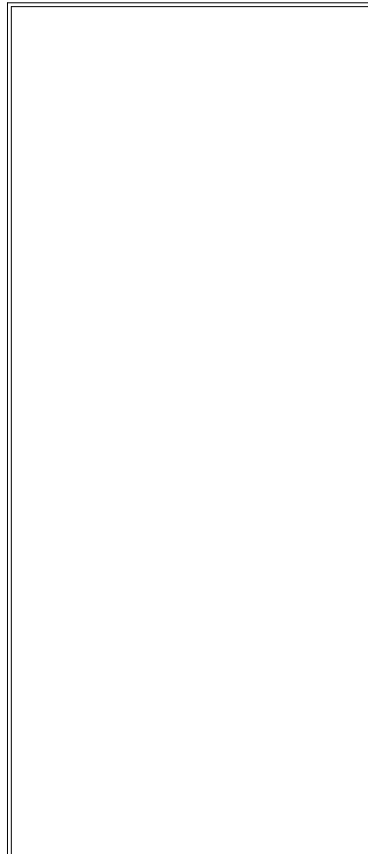
OFF FRAME LIFTING NOTES:
 1. IF LIFTING POINTS ARE MORE THAN 32' FEET APART (TYPICAL OF UNIT LENGTHS GREATER THAN 64'), A THIRD AND FOURTH LIFTING POINT IS REQUIRED. THIRD AND FOURTH LIFTING POINT IS TO BE BETWEEN OUTER LIFTING POINTS AND MEET THE REQUIREMENTS OF NOTE 2.
 2. PICK UP POINT MUST NOT BE LOCATED UNDER A WALL OPENING. IF AN OPENING CANNOT BE AVOIDED, A TEMPORARY WALL MUST BE INSTALLED.



PFS Corporation
Northeast Region
APPROVED
H Raup - 3
8/13/20
 Approval limited to
 Factory Built Portion

CHAMPION MANUFACTURED BEAUTIFULLY™ 755 W. BIG BEAVER ROAD, SUITE 100, TROY, MI 48064 PHONE: 248-511-5555	PROJECT: 023-6032-02 30'-4" x 60' 3 BD 2 BTH DRAWN BY: STAFF DATE: 03-26-17 SCALE: NTS	SHEET: F-101 TITLE: FOUNDATION PLAN FILENAME: 23-6032-02 MOD	PROPRIETARY AND CONFIDENTIAL THESE DRAWINGS AND SPECIFICATIONS ARE ORIGINAL PROPRIETARY AND CONFIDENTIAL MATERIALS OF CHAMPION. COPYRIGHT © 1979-2018 BY CHAMPION
	MODIFICATIONS:		

NOTE: 1" added to overall width to accommodate lift straps



PFS Corporation
 Northeast Region
 APPROVED
 H Raup – 3
 8/13/20
 Approval limited to
 Factory Built Portion

SECTION A-A
BLOCK WALL

SECTION A-A
BRICK VENEER WALL

SECTION A-A
CONTINUOUS 8\"/>

SECTION A-A
PIER & CURTAIN WALL

CHAMPION
 MANUFACTURED BEAUTIFULLY™
 755 W. BIG BEAVER ROAD, SUITE 1000, TROY, MI 48064
 PHONE: 248-541-6500

PROJECT:	023-6032-02
	30'-4" x 60' 3 BD 2 BTH
DRAWN BY:	STAFF
DATE:	03-09-17
SCALE:	N/A

TITLE:	FOUNDATION PLAN DETAILS
FILENAME:	23-6032-02 MOD

SHEET:	F-102
PROPRIETARY AND CONFIDENTIAL	
THESE DRAWINGS AND SPECIFICATIONS ARE ORIGINAL	
PROPRIETARY AND CONFIDENTIAL MATERIALS OF CHAMPION	
COPYRIGHT © 2016-2018 BY CHAMPION	

REFERENCE STRUCT. MANUAL SECTION 20

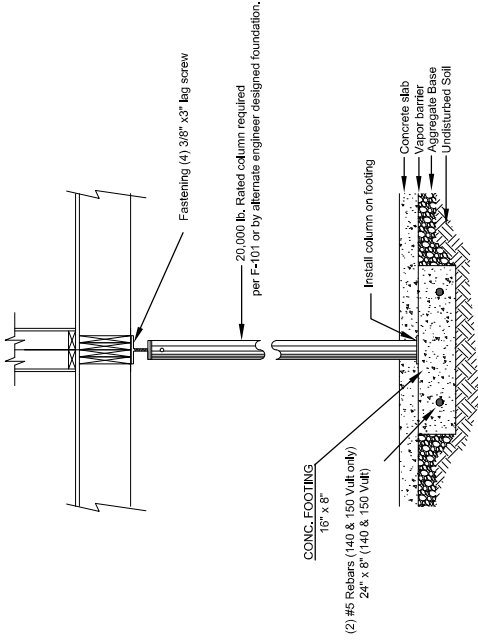
TYPICAL FOUNDATION NOTES :

- Foundation and its structural elements shall be capable of accommodating all superimposed live, dead, and other loads in accordance with applicable codes and all lateral loads in accordance with accepted design practices.
- Lots shall be provided with adequate drainage and shall be graded so as to drain surface water away from foundation walls - by lot owner.
- Materials shall conform to applicable standards and codes.
- Concrete subject to weathering shall have a minimum compressive strength and air content in accordance with code - 2500 psi concrete minimum.
- All exterior walls, bearing walls, columns, and piers shall be supported on continuous solid concrete footings which shall be of sufficient design to support safely the loads imposed as determined from the character of the soil, and shall in all cases, extend below the frost line. Top surface shall be level and bottom not exceeding 1 in 40 slope. Footings shall be not less than shown on drawings for 2000 psi soil.
- Foundation walls shall be constructed in accordance with the code and not less than as shown on the Drawings.
- Foundations shall extend not less than 12 inches below the finished natural grade or engineered fill and in no case less than the frost line depth. Footings on soil with a lower allowable soil pressure shall be designed in accordance with accepted engineering practice. However, where there is evidence that the groundwater table can rise to within 6 inches of the finished grade at the building perimeter or where there is evidence that the surface water does not readily drain from the building site, the building official may require that the grade in the under-floor space be as high as the outside finished grade, unless an approved drainage system is provided. Termit shields and/or protection shall be provided as per code. Local and state requirements for footings may exceed that shown on drawings. If there are any questions, contact your local building inspections department.
- Crawl space ventilation and access space shall be by openings in the foundation walls {cross-ventilation as required by code and/or as follows}. Provide 1 sq. Ft. of ventilation area for each 150 sq. Ft. of crawl space floor area. Use 8"x16" foundation vents with corrosion resistant wire mesh (1/8" mesh) or equal.
- Mortar shall be type "m" or "s".
- Minimum soil bearing capacity shall be 2000 psf.
- Anchorbolt length to be: masonry wall-20".
- Poured concrete footing w/two #5 rebar (120 & 130 only) continuous w'a minimum 25" lap. Place bars 3" from bottom.
- This foundation plan is provided for reference as a typical. Actual foundation conditions must be evaluated for applicability if this plan is to be used. Alternate foundation plans may be designed by others in accordance with the requirements of the jurisdiction having authority.

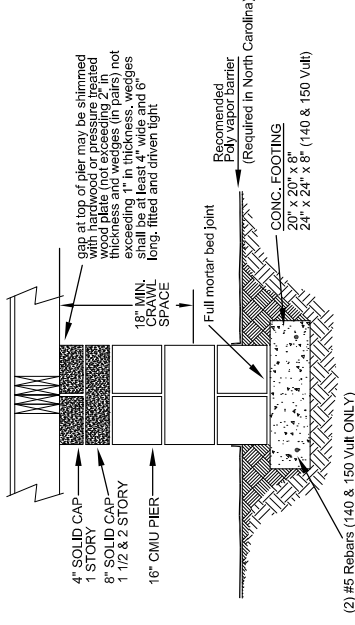
* Vertical wall reinforcement or continuous anchorage is as follows:

- Sidewall anchor bolt spacing see F-101
- Endwall anchor bolt spacing see F-101

PFS Corporation
Northeast Region
APPROVED
H Raup - 3
8/13/20
Approval limited to
Factory Built Portion



SECTION B-B
BASEMENT WALL



SECTION B-B
PIER & CURTAIN WALL, BLOCK WALL & BRICK VENEER WALL
(where required on module mate lines)

CHAMPION
MANUFACTURED BEAUTIFULLY™
 755 W. BIG BEAVER ROAD, SUITE 1000, TROY, MI 48064
 PHONE: 248-511-6550

MODIFICATIONS

PROJECT: **023-6032-02**
30'-4" x 60' 3 BD 2 BTH
 DRAWN BY: STAFF
 DATE: 03-26-17
 SCALE: NTS

TITLE: **FOUNDATION PLAN DETAILS**
 FILENAME: 23-6032-02.NOD

SHEET: **F-103**
 PROPRIETARY AND CONFIDENTIAL
 THESE DRAWINGS AND SPECIFICATIONS ARE ORIGINAL.
 PROPRIETARY AND CONFIDENTIAL MATERIALS OF CHAMPION.
 COPYRIGHT © 2015-2018 BY CHAMPION



2015 IECC Energy Efficiency Certificate

Insulation Rating	R-Value
Above-Grade Wall	15.00
Below-Grade Wall	0.00
Floor	30.00
Ceiling / Roof	30.00
Ductwork (unconditioned spaces):	_____

Glass & Door Rating	U-Factor	SHGC
Window	0.34	0.28
Door	0.34	0.28

Heating & Cooling Equipment	Efficiency
Heating System: _____	_____
Cooling System: _____	_____
Water Heater: _____	_____

Name: _____ Jon Tyndall _____ Date: _____ 7-15-20 _____

Comments

PFS Corporation
Northeast Region
APPROVED
H Raup – 3
8/13/20
Approval limited to
Factory Built Portion