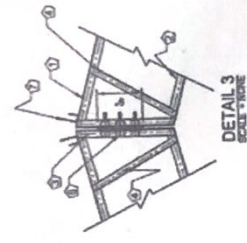
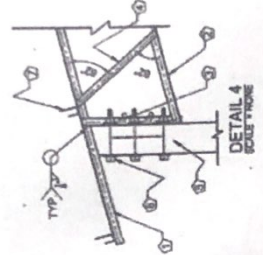
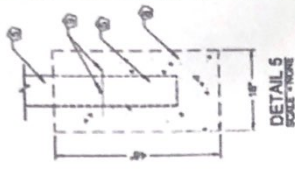


UP TO 40' TRUSS ELEVATION
SCALE 3/16" = 1'



NOTES:
MAXIMUM TRUSS SPACING
SHALL BE 10 FT.

FRAMING
① L 2X2X1/8"
② L 2X2X1/4"
③ L 2X2X3/8"
④ L 2X2X1/2"
⑤ 2X2 P.T. WOOD POST
⑥ 3-5/8" X 3/8"
⑦ BRACKET
⑧ 1/2" X 2 1/2" FND.
⑨ #5 BAR 12" LONG

- DESIGN CRITERIA
- 1. WIND LOAD = 140 MPH
 - 2. LIVE LOAD = 10 PSF
 - 3. DEAD LOAD = 5 PSF
 - 4. SNOW LOAD = 20 PSF
 - 5. CONCRETE = 3000 PSI

GENERAL NOTES

A. STRUCTURAL STEEL DESIGN, FABRICATION AND ERECTION SHALL BE IN ACCORDANCE WITH AISC "SPECIFICATION FOR THE DESIGN, FABRICATION AND ERECTION OF STRUCTURAL STEEL FOR BUILDINGS" NINTH EDITION.

B. HIGH STRENGTH BOLTING SHALL BE IN ACCORDANCE WITH AISC "SPECIFICATION FOR STRUCTURAL JOINTS USING ASTM A325 OR A490 BOLTS (STEEL SHALL HAVE THE FOLLOWING MINIMUM YIELD STRENGTHS, SHALL BE HOT DIP GALVANIZED PER SABS S24 AT GROUND FLOOR, UNLESS OTHERWISE NOTED ON THE DRAWINGS.

STRUCTURAL TUBING Fy = 48KSI
ALL OTHER Fy = 36KSI

D. WELDING SHALL BE IN ACCORDANCE WITH AMERICAN WELDING SOCIETY SPECIFICATION AWS A5.1 (1990).

E. WELDING ELECTRODES USED FOR SHOP OR FIELD CONNECTIONS SHALL HAVE A MINIMUM ELECTRODE TENSILE STRENGTH OF 70 KSI. UNLESS NOTED OTHERWISE ON THE DRAWINGS, ELECTRODES SHALL CONFORM TO AWS A5.

KIPAYAT U. KHIAN, PE
N.C. REG. NO. 147046
SEAL

PROJECT NAME: 1.11
LOCATION: 123456
DATE: 01/10/11
SCALE: AS SHOWN
CHECKED BY: [Signature]
COVER SHEET SHEET 1 OF 1

SECUM CORP.
STRUCTURAL STEEL CO.
MILTON, FL 32709
TEL: 850-232-2327 FAX: 850-465-3143
EMAIL: INFO@SECUMCORP.COM