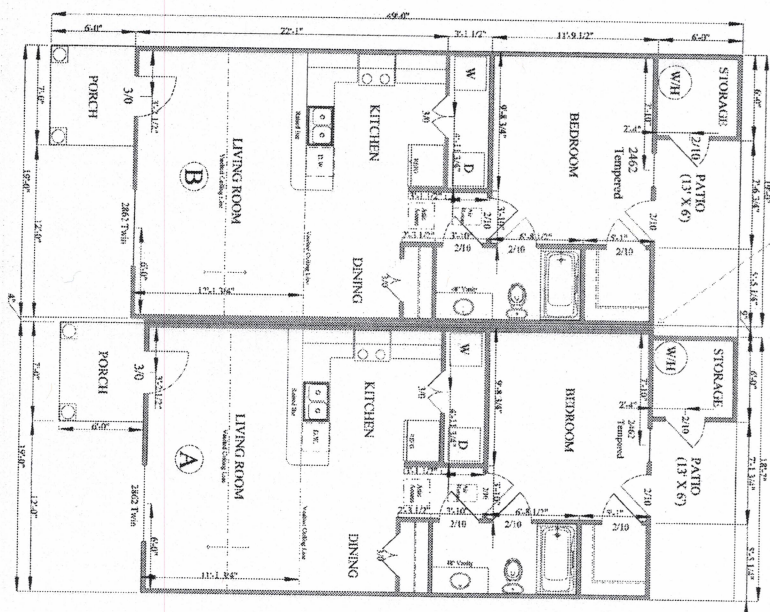


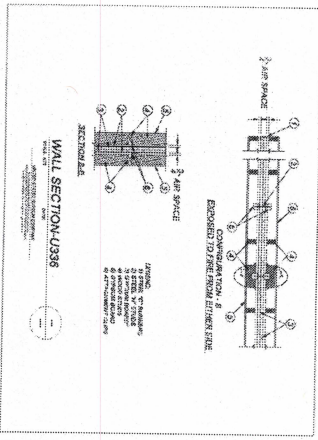
OVERALL BUILDING

Scale = 1/8" = 1'-0"



INDIVIDUAL A / B UNITS

Scale = 1/4" = 1'-0"



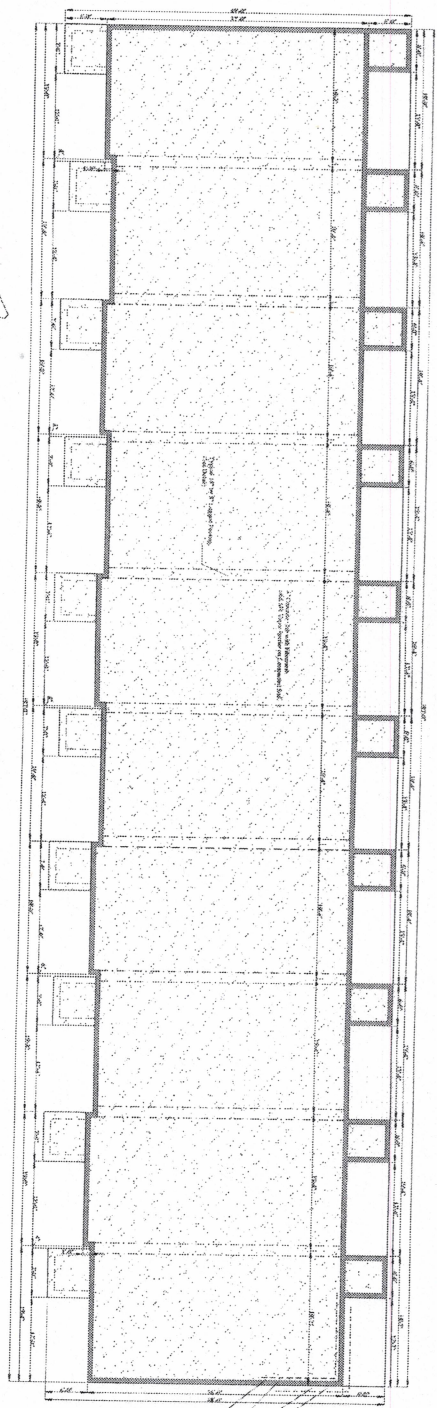
NOTES:

1. Refer to drawings for details of construction.
2. Refer to drawings for details of construction.
3. Refer to drawings for details of construction.
4. Refer to drawings for details of construction.
5. Refer to drawings for details of construction.
6. Refer to drawings for details of construction.
7. Refer to drawings for details of construction.
8. Refer to drawings for details of construction.
9. Refer to drawings for details of construction.
10. Refer to drawings for details of construction.
11. Refer to drawings for details of construction.
12. Refer to drawings for details of construction.
13. Refer to drawings for details of construction.
14. Refer to drawings for details of construction.
15. Refer to drawings for details of construction.
16. Refer to drawings for details of construction.
17. Refer to drawings for details of construction.
18. Refer to drawings for details of construction.
19. Refer to drawings for details of construction.
20. Refer to drawings for details of construction.

FLOOR PLAN
 (9' Ceiling Height Unless Otherwise Noted)
 684 Heated Sq. Ft. - Each Unit
 703 Heated Sq. Ft. - Each Unit
 6933 Heated Sq. Ft. - Total Building
 36 Unheated Sq. Ft. - Each Storage
 42 Unheated Sq. Ft. - Each Porch
 78 Sq. Ft. - Each Back Patio

2	<p>CAMPBELL POINTE PARTNERS, LLC 2323 Keith Hills Rd. Lillington, NC 27546 Phone: (910) 814-4236 Fax: (520) 842-3303</p>	<p>Jason Price Construction Inc. 2323 Keith Hills Rd. Lillington, NC 27546 Phone: (910) 814-4236 Fax: (520) 842-3303</p>
	<p>FLOOR PLAN 1 Bedroom / 1 Bath 10 Unit Building Type 'B' Option 'A' Units per ICCA 117.1-2009</p>	<p>SCALE 1/4" = 1'-0"</p>

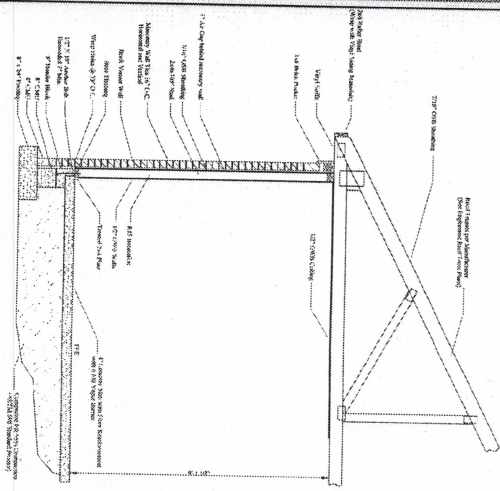
THIS PLAN IS DESIGNED TO MEET THE REQUIREMENTS OF THE NORTH CAROLINA RESIDENTIAL CODE 2018 EDITION



OVERALL FOUNDATION

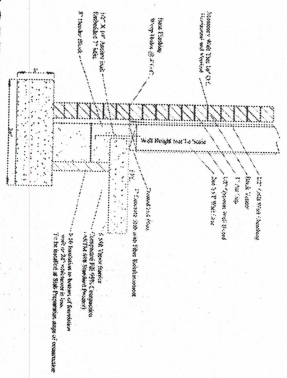
Scale = 1/8" = 1'-0"

ALL FOUNDATION DIMENSIONS ARE TO FRAMING BUILDING TO BE BRICK VENEER



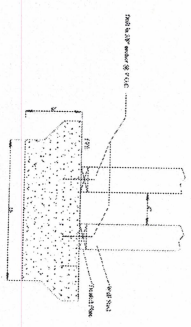
WALL SECTION

Not to Scale



FOUNDATION DETAIL

Not to Scale



LUGGED FOOTING DETAIL

Not to Scale

FOUNDATION PLAN

Scale 1/8" = 1'-0"

7044 Heated Sq. Ft.
3601 Unheated Sq. Ft. - Storage Areas
420 Unheated Sq. Ft. - Front Porches

FOUNDATION ANCHOR NOTES
1. All foundation anchors shall be installed in accordance with the manufacturer's instructions.
2. All foundation anchors shall be installed in accordance with the manufacturer's instructions.
3. All foundation anchors shall be installed in accordance with the manufacturer's instructions.
4. All foundation anchors shall be installed in accordance with the manufacturer's instructions.
5. All foundation anchors shall be installed in accordance with the manufacturer's instructions.
6. All foundation anchors shall be installed in accordance with the manufacturer's instructions.
7. All foundation anchors shall be installed in accordance with the manufacturer's instructions.
8. All foundation anchors shall be installed in accordance with the manufacturer's instructions.
9. All foundation anchors shall be installed in accordance with the manufacturer's instructions.
10. All foundation anchors shall be installed in accordance with the manufacturer's instructions.
11. All foundation anchors shall be installed in accordance with the manufacturer's instructions.
12. All foundation anchors shall be installed in accordance with the manufacturer's instructions.

GENERAL NOTES

1. All foundation anchors shall be installed in accordance with the manufacturer's instructions.
2. All foundation anchors shall be installed in accordance with the manufacturer's instructions.
3. All foundation anchors shall be installed in accordance with the manufacturer's instructions.
4. All foundation anchors shall be installed in accordance with the manufacturer's instructions.
5. All foundation anchors shall be installed in accordance with the manufacturer's instructions.
6. All foundation anchors shall be installed in accordance with the manufacturer's instructions.
7. All foundation anchors shall be installed in accordance with the manufacturer's instructions.
8. All foundation anchors shall be installed in accordance with the manufacturer's instructions.
9. All foundation anchors shall be installed in accordance with the manufacturer's instructions.
10. All foundation anchors shall be installed in accordance with the manufacturer's instructions.
11. All foundation anchors shall be installed in accordance with the manufacturer's instructions.
12. All foundation anchors shall be installed in accordance with the manufacturer's instructions.

<p>DATE: 10/17/2018</p> <p>SCALE: 1/8" = 1'-0"</p> <p>3</p>	<p>FOUNDATION PLAN 1 Bedroom / 1 Bath 10 Unit Building Type 'B' Option 'A' Units per ICC A117.1-2009</p>	<p>CAMPBELL POINTE PARTNERS, LLC 2323 Keith Hills Rd. Lillington, NC 27546 Phone: (910) 814-4236 Fax: (520) 842-3303</p>	<p>Jason Price Construction Inc. 2323 Keith Hills Rd. Lillington, NC 27546 Phone: (910) 814-4236 Fax: (520) 842-3303</p>
---	--	---	---