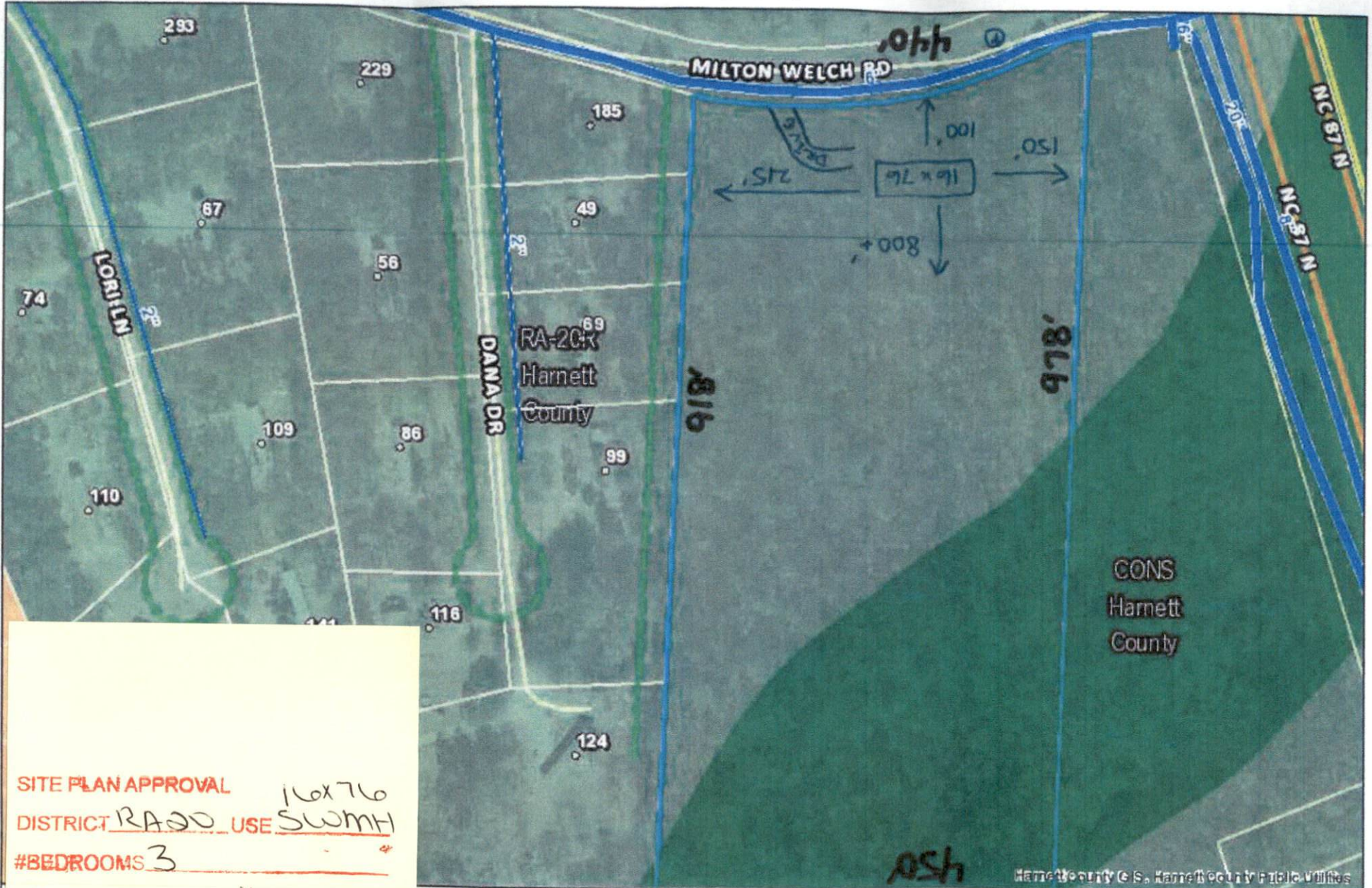


Harnett GIS

NOT FOR LEGAL USE

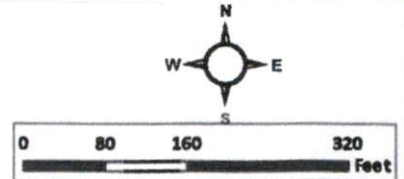


SITE PLAN APPROVAL
DISTRICT RA20 **USE** SWMH
#BEDROOMS 3

K.A.G.
 ZONING ADMINISTRATOR

- City Limits
- Harnett County Boundary
- Schools**
- School - Elementary
- School - High

- School - Middle
- School - Primary
- Address Numbers
- Force Main
- Gravity



Harnett County GIS, Harnett County Public Utilities