

26'0"

Concrete Slab

16" wide 8" Deep concrete Footing

Provide j hook anchor bolts per Code.

26'0"
28'0"

Concrete Slab

window

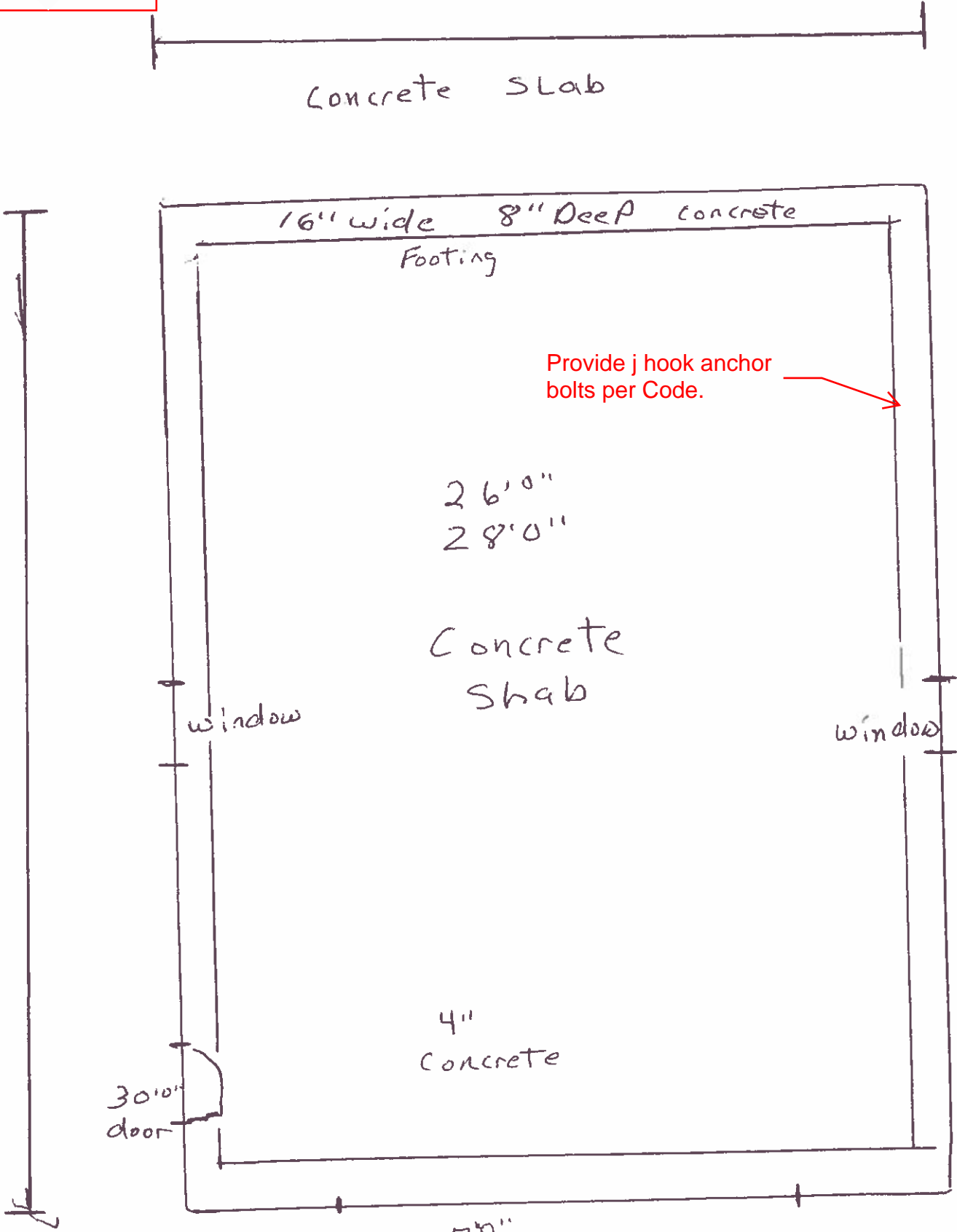
window

30'0" door

4" Concrete

7'0"
16'0"
Garage door

20



Trenco

818 Soundside Rd
Edenton, NC 27932

Re: 23955-23955A
Murray Powell

The truss drawing(s) referenced below have been prepared by Truss Engineering Co. under my direct supervision based on the parameters provided by 84 Components - #2383.

Pages or sheets covered by this seal: I41438924 thru I41438925

My license renewal date for the state of North Carolina is December 31, 2020.

North Carolina COA: C-0844



May 28, 2020

Sevier, Scott

IMPORTANT NOTE: The seal on these truss component designs is a certification that the engineer named is licensed in the jurisdiction(s) identified and that the designs comply with ANSI/TPI 1. These designs are based upon parameters shown (e.g., loads, supports, dimensions, shapes and design codes), which were given to MiTek or TRENCO. Any project specific information included is for MiTek's or TRENCO's customers file reference purpose only, and was not taken into account in the preparation of these designs. MiTek or TRENCO has not independently verified the applicability of the design parameters or the designs for any particular building. Before use, the building designer should verify applicability of design parameters and properly incorporate these designs into the overall building design per ANSI/TPI 1, Chapter 2.

Job 23955-23955A	Truss AE	Truss Type GABLE	Qty 2	Ply 1	Murray Powell	141438924
---------------------	-------------	---------------------	----------	----------	---------------	-----------

84 Components (Dunn), Dunn, NC - 28334,

8.330 s May 6 2020 MiTek Industries, Inc. Wed May 27 14:34:07 2020 Page 1
ID: Fip6jAQzIF5n8DUXzg3CszEves-7xbGbb4N_DVOJZB89DII0CUs82RG3GmOO6122ZCGJE

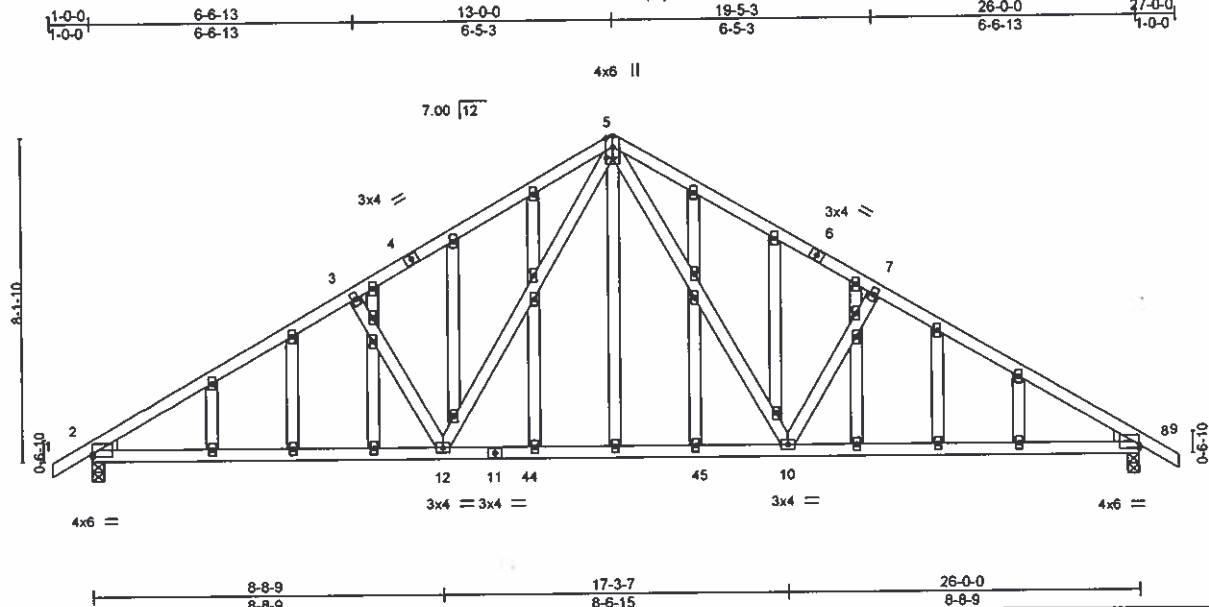


Plate Offsets (X,Y) - [2:0-0-0,0-1-1], [5:0-2-0,0-0-4], [8:Edge,0-1-1]

LOADING (psf)	SPACING-	2-0-0	CSI.	DEFL.	in (loc)	l/defl	L/d	PLATES	GRIP	
TCLL 20.0	Plate Grip DOL	1.15	TC 0.54	Vert(LL)	-0.27	10-12	>999	240	MT20	244/190
TCDL 10.0	Lumber DOL	1.15	BC 0.77	Vert(CT)	-0.38	10-12	>816	180		
BCLL 0.0 *	Rep Stress Incr	YES	WB 0.24	Horz(CT)	0.05	8	n/a	n/a		
BCDL 10.0	Code IRC2015/TPI2014		Matrix-MS							
									Weight: 197 lb	FT = 20%

LUMBER-

TOP CHORD 2x4 SP No.2
 BOT CHORD 2x4 SP No.2
 WEBS 2x4 SP No.3
 OTHERS 2x4 SP No.3
 WEDGE

Left: 2x4 SP No.3, Right: 2x4 SP No.3

REACTIONS.

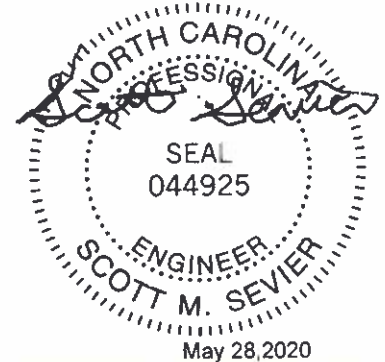
(size) 2=0-3-8, 8=0-3-8
 Max Horz 2=202(LC 10)
 Max Uplift 2=138(LC 12), 8=138(LC 13)
 Max Grav 2=1100(LC 1), 8=1100(LC 1)

FORCES. (lb) - Max. Comp./Max. Ten. - All forces 250 (lb) or less except when shown.

TOP CHORD 2-3=-1599/291, 3-5=-1429/335, 5-7=-1429/335, 7-8=-1599/291
 BOT CHORD 2-12=-200/1425, 10-12=-21/925, 8-10=-148/1300
 WEBS 5-10=-129/662, 7-10=-378/244, 5-12=-129/662, 3-12=-378/243

NOTES-

- Unbalanced roof live loads have been considered for this design.
- Wind: ASCE 7-10; Vult=130mph (3-second gust) Vasd=103mph; TC DL=6.0psf; BCDL=6.0psf; h=30ft; Cat. II; Exp B; Enclosed. MWFRS (envelope) gable end zone and C-C Exterior(2) zone, cantilever left and right exposed; end vertical left and right exposed; C-C for members and forces & MWFRS for reactions shown; Lumber DOL=1.60 plate grip DOL=1.60
- Truss designed for wind loads in the plane of the truss only. For studs exposed to wind (normal to the face), see Standard Industry Gable End Details as applicable, or consult qualified building designer as per ANSI/TPI 1.
- All plates are 2x4 MT20 unless otherwise indicated.
- Gable studs spaced at 2-0-0 oc.
- This truss has been designed for a 10.0 psf bottom chord live load nonconcurrent with any other live loads.
- * This truss has been designed for a live load of 20.0psf on the bottom chord in all areas under a rectangle 3-6-0 tall by 2-0-0 wide will fit between the bottom chord and any other members, with BCDL = 10.0psf.
- One H2.5A Simpson Strong-Tie connectors recommended to connect truss to bearing walls due to UPLIFT at j(s) 2 and 8. This connection is for uplift only and does not consider lateral forces.



May 28, 2020

WARNING - Verify design parameters and READ NOTES ON THIS AND INCLUDED MITEK REFERENCE PAGE MII-1473 rev. 10/03/2015 BEFORE USE.

Design valid for use only with MiTek® connectors. This design is based only upon parameters shown, and is for an individual building component, not a truss system. Before use, the building designer must verify the applicability of design parameters and properly incorporate this design into the overall building design. Bracing indicated is to prevent buckling of individual truss web and/or chord members only. Additional temporary and permanent bracing is always required for stability and to prevent collapse with possible personal injury and property damage. For general guidance regarding the fabrication, storage, delivery, erection and bracing of trusses and truss systems, see ANSI/TPI1 Quality Criteria, DSB-89 and BCSI Building Component Safety Information available from Truss Plate Institute, 218 N. Lee Street, Suite 312, Alexandria, VA 22314.

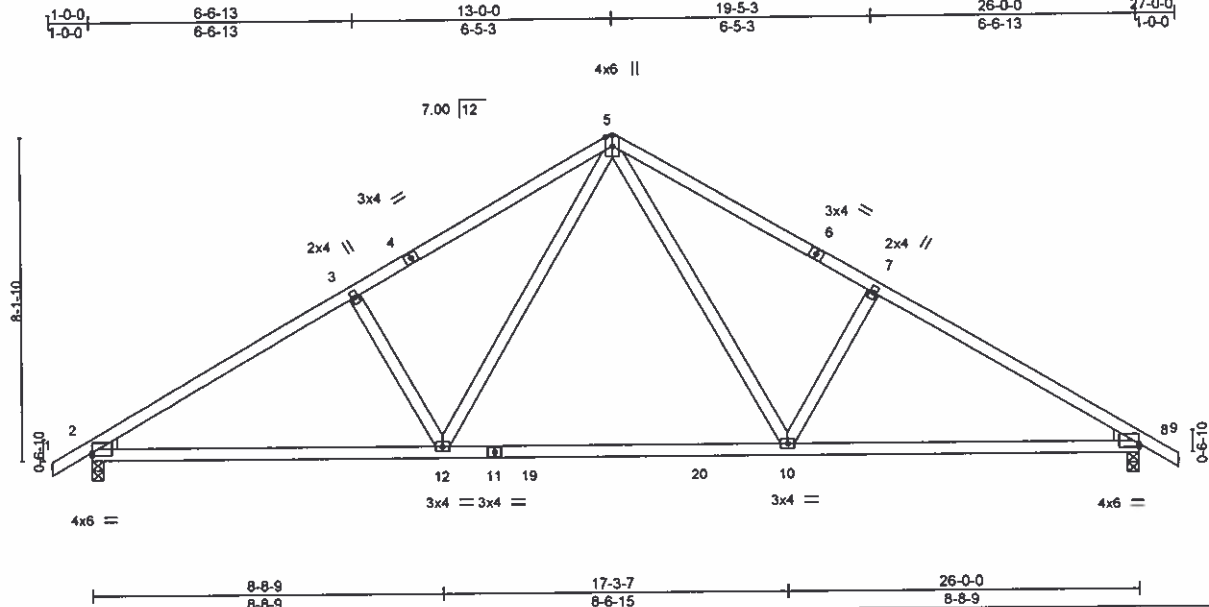
ENGINEERING BY
TRENCO
 A MITEK COMPANY

816 Soundside Road
 Edenonton, NC 27832

Job 23955-23955A	Truss A	Truss Type Common	Qty 13	Ply 1	Murray Powell	141438925
---------------------	------------	----------------------	-----------	----------	---------------	-----------

84 Components (Dunn), Dunn, NC - 28334,

8.330 s May 6 2020 MiTek Industries, Inc. Wed May 27 14:34:06 2020 Page 1
ID: Fip6jAQzIF5n8DUXz3CsizEves-fl1uNF4IDvNX6PycWEWT?xiOe51KpWF9SIUW0zCGjF



Scale = 1:54.1

Plate Offsets (X,Y) =	[2:0-0-0,0-1-1], [8:Edge,0-1-1]							
LOADING (psf)	SPACING- 2-0-0	CSI.	DEFL.	in (loc)	l/defl	L/d	PLATES	GRIP
TCLL 20.0	Plate Grip DOL 1.15	TC 0.54	Vert(LL) -0.27	10-12	>999	240	MT20	244/190
TCDL 10.0	Lumber DOL 1.15	BC 0.77	Vert(CT) -0.38	10-12	>816	180		
BCLL 0.0 *	Rep Stress Incr YES	WB 0.24	Horz(CT) 0.05	8	n/a	n/a		
BCDL 10.0	Code IRC2015/TPI2014	Matrix-MS					Weight: 127 lb	FT = 20%

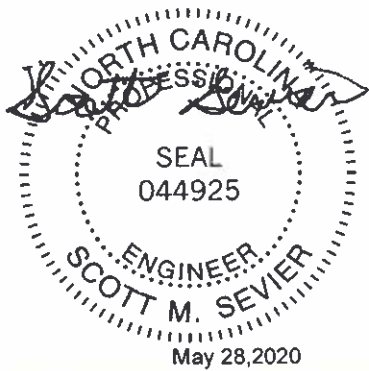
LUMBER-
TOP CHORD 2x4 SP No.2
BOT CHORD 2x4 SP No.2
WEBS 2x4 SP No.3
WEDGE
Left: 2x4 SP No.3, Right: 2x4 SP No.3

BRACING-
TOP CHORD Structural wood sheathing directly applied or 4-3-0 oc purlins.
BOT CHORD Rigid ceiling directly applied or 10-0-0 oc bracing.

REACTIONS. (size) 2=0-3-8, 8=0-3-8
Max Horz 2=-202(LC 10)
Max Uplift 2=-138(LC 12), 8=-138(LC 13)
Max Grav 2=1100(LC 1), 8=1100(LC 1)

FORCES. (lb) - Max. Comp./Max. Ten. - All forces 250 (lb) or less except when shown.
TOP CHORD 2-3=-1599/291, 3-5=-1429/335, 5-7=-1429/335, 7-8=-1599/291
BOT CHORD 2-12=-200/1425, 10-12=-21/925, 8-10=-148/1300
WEBS 5-10=-129/662, 7-10=-378/244, 5-12=-129/662, 3-12=-378/243

- NOTES-**
- Unbalanced roof live loads have been considered for this design.
 - Wind: ASCE 7-10; Vult=130mph (3-second gust) Vasd=103mph; TCDL=6.0psf; BCDL=6.0psf; h=30ft; Cat. II; Exp B; Enclosed; MWFRS (envelope) gable end zone and C-C Exterior(2) zone; cantilever left and right exposed; end vertical left and right exposed; C-C for members and forces & MWFRS for reactions shown; Lumber DOL=1.60 plate grip DOL=1.60
 - This truss has been designed for a 10.0 psf bottom chord live load nonconcurrent with any other live loads.
 - * This truss has been designed for a live load of 20.0psf on the bottom chord in all areas where a rectangle 3-6-0 tall by 2-0-0 wide will fit between the bottom chord and any other members, with BCDL = 10.0psf.
 - One MTS12 Simpson Strong-Tie connectors recommended to connect truss to bearing walls due to UPLIFT at j(s) 2 and 8. This connection is for uplift only and does not consider lateral forces.

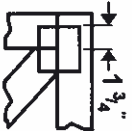


WARNING - Verify design parameters and READ NOTES ON THIS AND INCLUDED MITEK REFERENCE PAGE MI-7473 rev. 10/03/2015 BEFORE USE!
Design valid for use only with MiTek® connectors. This design is based only upon parameters shown, and is for an individual building component, not a truss system. Before use, the building designer must verify the applicability of design parameters and properly incorporate this design into the overall building design. Bracing indicated is to prevent buckling of individual truss web and/or chord members only. Additional temporary and permanent bracing is always required for stability and to prevent collapse with possible personal injury and property damage. For general guidance regarding the fabrication, storage, delivery, erection and bracing of trusses and truss systems, see ANSITPH Quality Criteria, DSB-89 and BCS1 Building Component Safety Information available from Truss Plate Institute, 218 N. Lee Street, Suite 312, Alexandria, VA 22314.

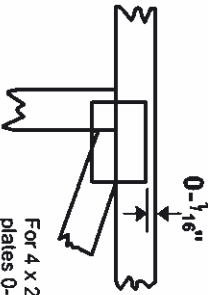
ENGINEERING BY
TRENCO
A MITEK COMPANY
818 Soundside Road
Edenton, NC 27932

Symbols

PLATE LOCATION AND ORIENTATION



Center plate on joint unless x, y offsets are indicated. Dimensions are in ft-in-sixteenths. Apply plates to both sides of truss and fully embed teeth.



For 4 x 2 orientation, locate plates 0- $\frac{1}{8}$ " from outside edge of truss.



This symbol indicates the required direction of slots in connector plates.

* Plate location details available in MITek 20/20 software or upon request.

PLATE SIZE

4 X 4

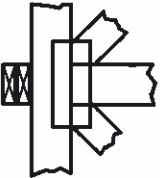
The first dimension is the plate width measured perpendicular to slots. Second dimension is the length parallel to slots.

LATERAL BRACING LOCATION



Indicated by symbol shown and/or by text in the bracing section of the output. Use T or I bracing if indicated.

BEARING



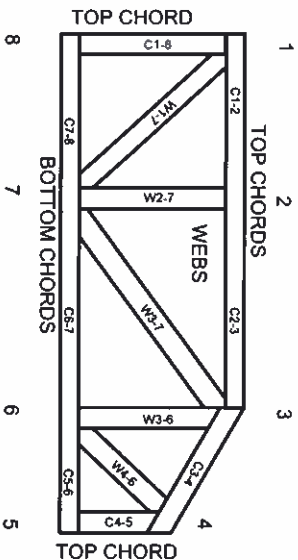
Indicates location where bearings (supports) occur. Icons vary but reaction section indicates joint number where bearings occur. Min size shown is for crushing only.

Industry Standards:

- ANSI/TP1: National Design Specification for Metal Plate Connected Wood Truss Construction.
- DSB-89: Design Standard for Bracing.
- BCSI: Building Component Safety Information, Guide to Good Practice for Handling, Installing & Bracing of Metal Plate Connected Wood Trusses.

Numbering System

6-4-8 dimensions shown in ft-in-sixteenths (Drawings not to scale)



JOINTS ARE GENERALLY NUMBERED/LETTERED CLOCKWISE AROUND THE TRUSS STARTING AT THE JOINT FARTHEST TO THE LEFT.

CHORDS AND WEBS ARE IDENTIFIED BY END JOINT NUMBERS/LETTERS.

PRODUCT CODE APPROVALS

ICC-ES Reports:

- ESR-1311, ESR-1352, ESR1988
- ESR-3907, ESR-2362, ESR-1397, ESR-3282

Trusses are designed for wind loads in the plane of the truss unless otherwise shown.

Lumber design values are in accordance with ANSI/TP1 section 6.3. These truss designs rely on lumber values established by others.

© 2012 MITek® All Rights Reserved

General Safety Notes

Failure to Follow Could Cause Property Damage or Personal Injury

- Additional stability bracing for truss system, e.g. diagonal or X-bracing, is always required. See BCSI.
- Truss bracing must be designed by an engineer. For wide truss spacing, individual lateral braces themselves may require bracing, or alternative Top I bracing should be considered.
- Never exceed the design loading shown and never stack materials on inadequately braced trusses.
- Provide copies of this truss design to the building designer, erection supervisor, property owner and all other interested parties.
- Cut members to bear tightly against each other.
- Place plates on each face of truss at each joint and embed fully. Knots and wane at joint locations are regulated by ANSI/TP1 1.
- Design assumes trusses will be suitably protected from the environment in accord with ANSI/TP1 1.
- Unless otherwise noted, moisture content of lumber shall not exceed 19% at time of fabrication.
- Unless expressly noted, this design is not applicable for use with fire retardant, preservative treated, or green lumber.
- Camber is a non-structural consideration and is the responsibility of truss fabricator. General practice is to camber for dead load deflection.
- Plate type, size, orientation and location dimensions indicated are minimum plating requirements.
- Lumber used shall be of the species and size, and in all respects, equal to or better than that specified.
- Top chords must be sheathed or purlins provided at spacing indicated on design.
- Bottom chords require lateral bracing at 10 ft spacing or less, if no ceiling is installed, unless otherwise noted.
- Connections not shown are the responsibility of others.
- Do not cut or alter truss member or plate without prior approval of an engineer.
- Install and load vertically unless indicated otherwise.
- Use of green or treated lumber may pose unacceptable environmental, health or performance risks. Consult with project engineer before use.
- Review all portions of this design (front, back, words and pictures) before use. Reviewing pictures alone is not sufficient.
- Design assumes manufacture in accordance with ANSI/TP1 Quality Criteria.

