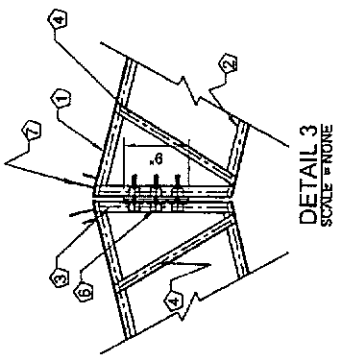
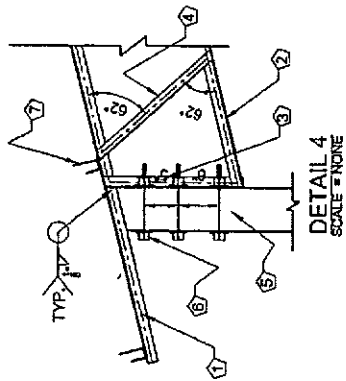
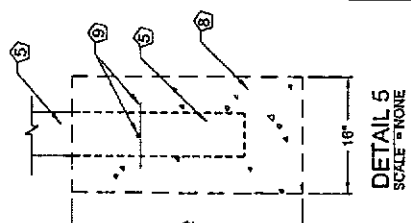
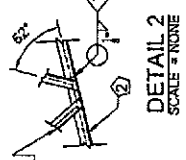
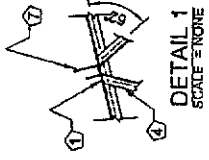


UP TO 50' TRUSS ELEVATION
 SCALE 1/4" = 1'



NOTES:
 MAXIMUM TRUSS SPACING
 SHALL BE 10 FT.

FRAMING
① L 2X2X3/16"
② L 2X2X3/16"
③ L 2X2X3/16"
④ L 11/4X11/4X3/16"
⑤ 6X6 P.T. WOOD POST
⑥ 3-5/8"Ø A325
⑦ BRACKET
⑧ 16"Ø X40" FND.
⑨ #5 BAR 12" LONG

- DESIGN CRITERIA**
- 1 WIND LOAD = 110 MPH
 - 2 LIVE LOAD = 10 PSF
 - 3 DEAD LOAD = 5 PSF
 - 4 SNOW LOAD = 7-10 PSF
 - 5 CONCRETE = 3500 PSI

- GENERAL NOTES**
- A. STRUCTURAL STEEL DESIGN, FABRICATION AND ERECTION SHALL BE IN ACCORDANCE WITH AISC "SPECIFICATION FOR THE DESIGN, FABRICATION AND ERECTION OF STRUCTURAL STEEL FOR BUILDINGS," NINTH EDITION.
 - B. HIGH STRENGTH BOLTING SHALL BE IN ACCORDANCE WITH AISC "SPECIFICATION FOR STRUCTURAL JOINTS USING ASTM A325 OR A490 BOLTS" (LATEST EDITION).
 - C. ALL STRUCTURAL STEEL SHALL HAVE THE FOLLOWING MINIMUM YIELD STRENGTHS. SHALL BE HOT DIP GALVANIZED PER PER SABS 934 AT GROUND FLOOR, UNLESS OTHERWISE NOTED ON THE DRAWINGS.
 STRUCTURAL TUBING Fy = 48KSI
 ALL OTHER Fy = 36KSI
 WELDING SHALL BE IN ACCORDANCE WITH AMERICAN WELDING SOCIETY SPECIFICATION AWS A5.1 (1996).
 - D. WELDING ELECTRODES USED FOR SHOP OR FIELD CONNECTIONS SHALL HAVE A MINIMUM ELECTRODE TENSILE STRENGTH OF 70 KSI. UNLESS NOTED OTHERWISE ON THE DRAWINGS, ELECTRODES SHALL CONFORM TO AWS A5.

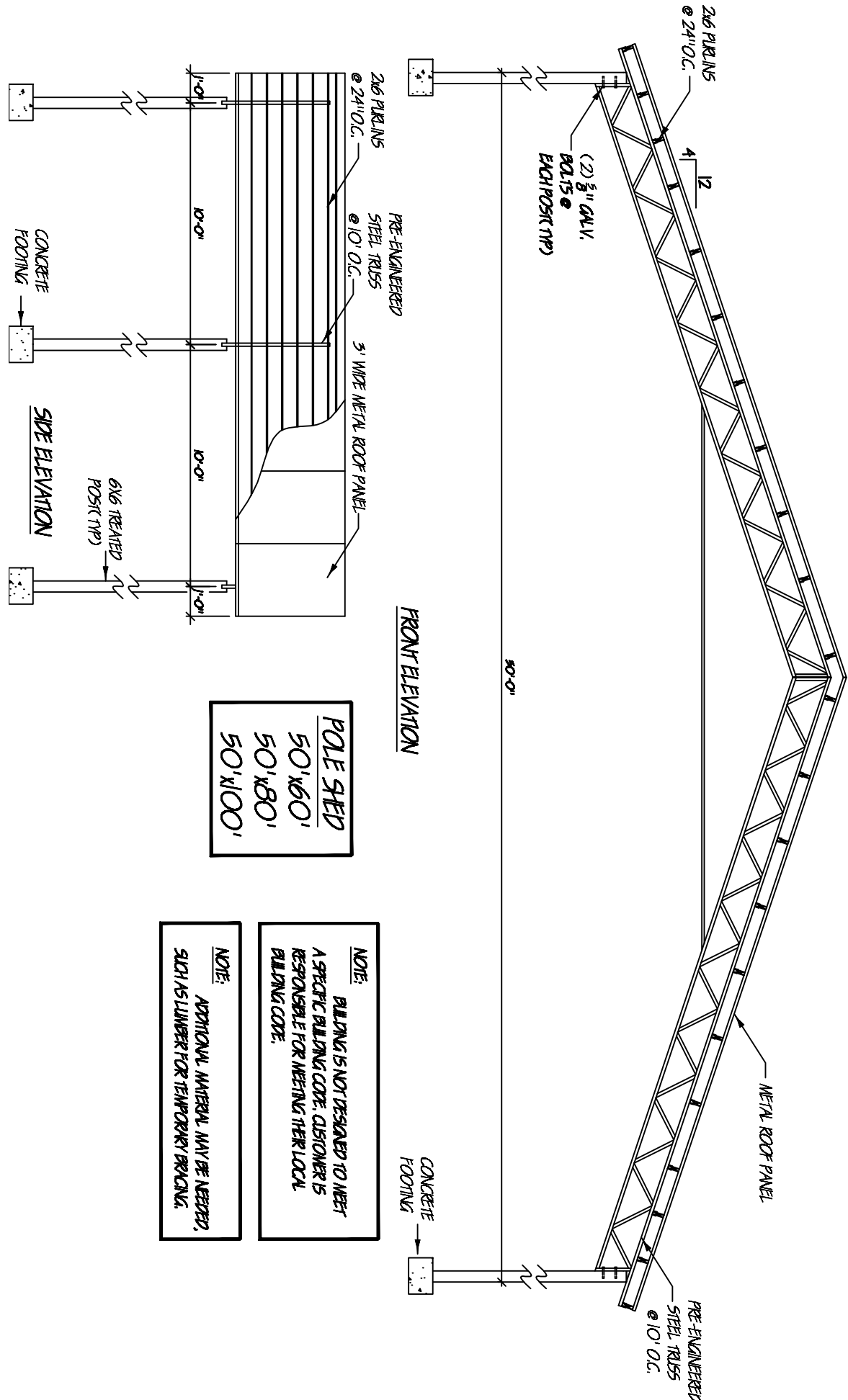
KIFAYAT U. KHAN, PE
 N.C. REGISTERED PROFESSIONAL ENGINEER
 047046

Professional Seal: KIFAYAT U. KHAN, PE, 047046

S.E.C.M. CORP.
 6733 CEDAR RIDGE CIR.
 MILITON, FL 32570
 P/E: 800-931-2111 FAX: 850-465-2145
 EMAIL: XCFH@SECMCORP.COM

PROJECT NAME: 24M
 LOCATION: RAYMOND
 COUNTY: ESCAMBLE

DATE: 4/12/2011	SCALE: SHOP/FY
DRAWN: KY	REVISION: 0
CHECKED: JAC	APPROVAL: 0
COVER SHEET	SHEET 1 OF 1



POLE SHED	
50'x60'	
50'x80'	
50'x100'	

NOTE: BUILDING IS NOT DESIGNED TO MEET A SPECIFIC BUILDING CODE. CUSTOMER IS RESPONSIBLE FOR MEETING THEIR LOCAL BUILDING CODE.

NOTE: ADDITIONAL MATERIAL MAY BE NEEDED, SUCH AS LUMBER FOR TEMPORARY BRACING.