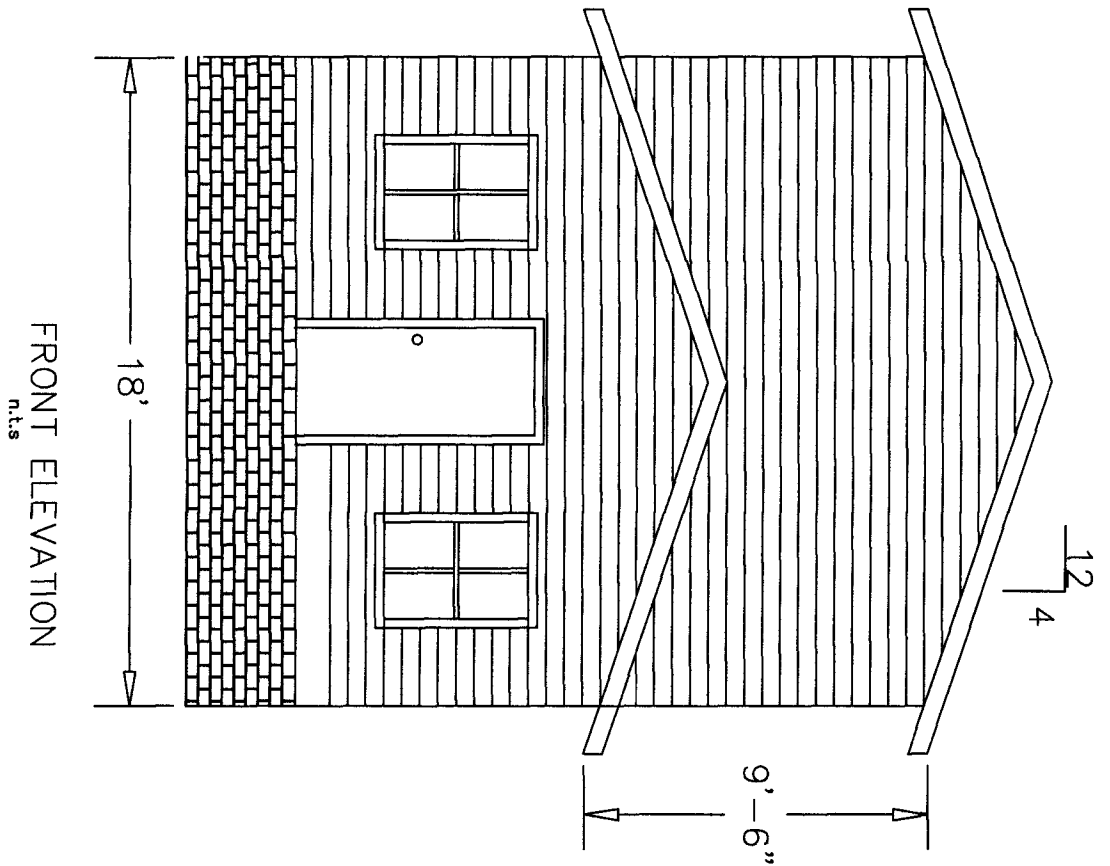
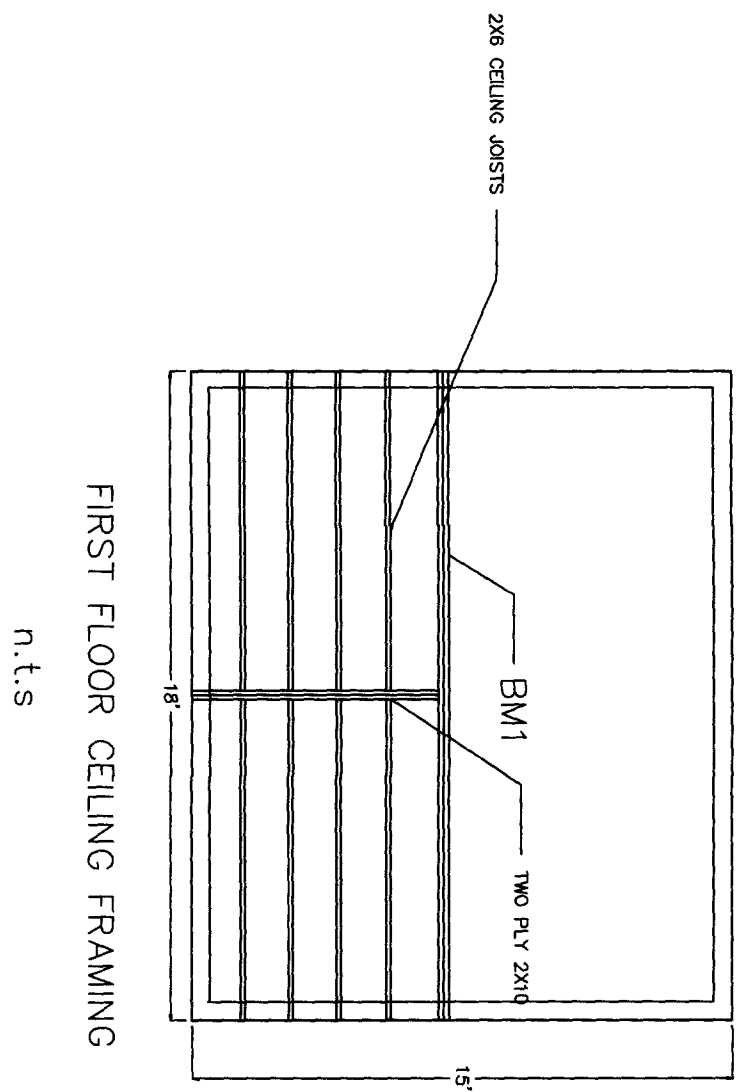
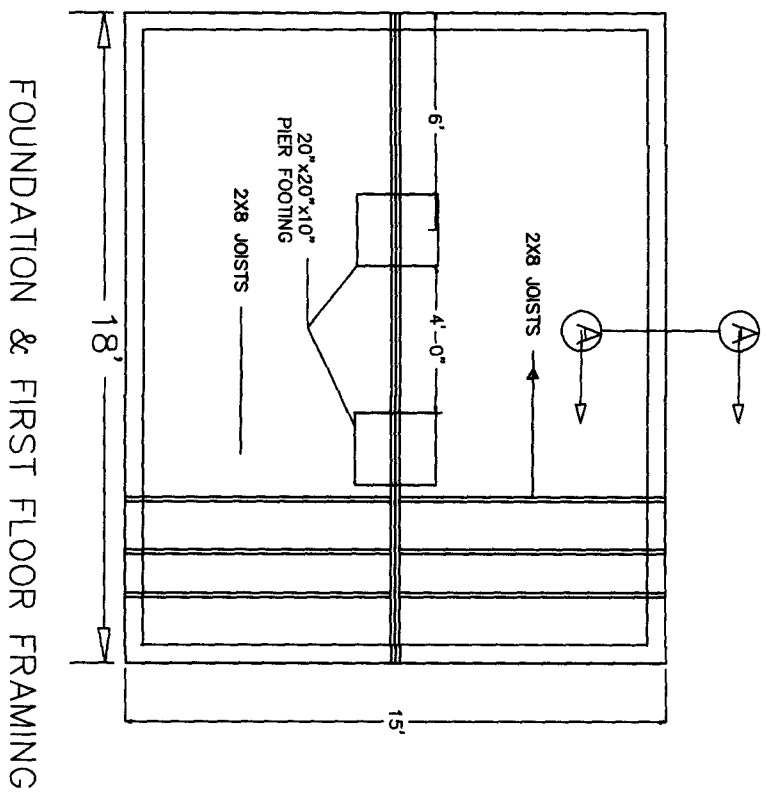


NOTE:
 INSTALL 18"X24" ACCESS
 DOOR IN FOUNDATION WALL.



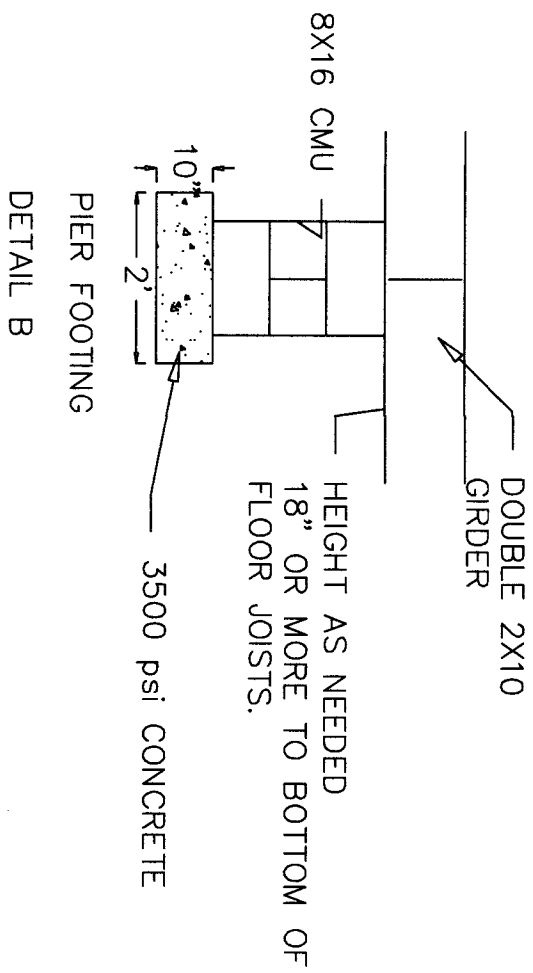
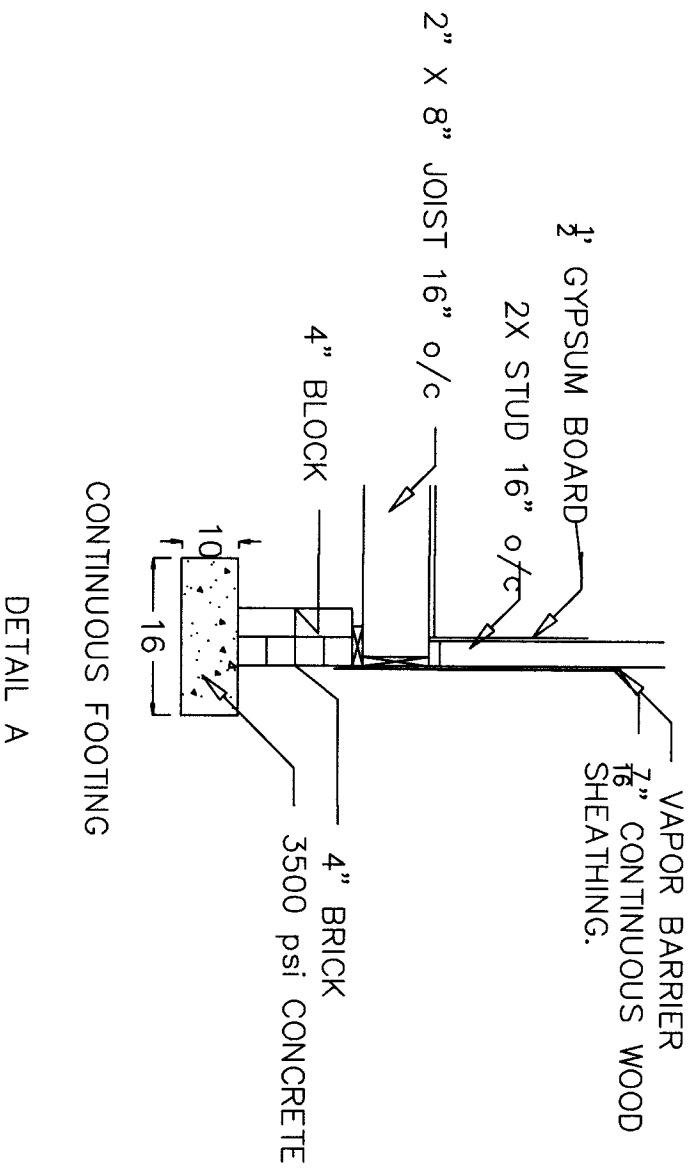
ADDATION	165 CRESTHAVEN RD. SANFORD, NC	CONSTRUCTION SOLUTIONS 211 CLAREMONT ST. FAYETTEVILLE, NC	Marshall Engineering Services 7575 McArtans Ford Linden, NC 28356 910-850-5874 Corp. Licenses P0682
ELEVATION			



BN
TM



ADDATION	165 CRESTHAVEN RD. SANFORD. NC	CONSTRUCTION SOLUTIONS 211 CLAREMONT ST. FAYETTEVILLE, NC	Marshall Engineering Services 7575 McCartans Ford Linden, NC 28356 910-850-5874 Corp. Licenses P0682
FOUNDATION & FRAMING			



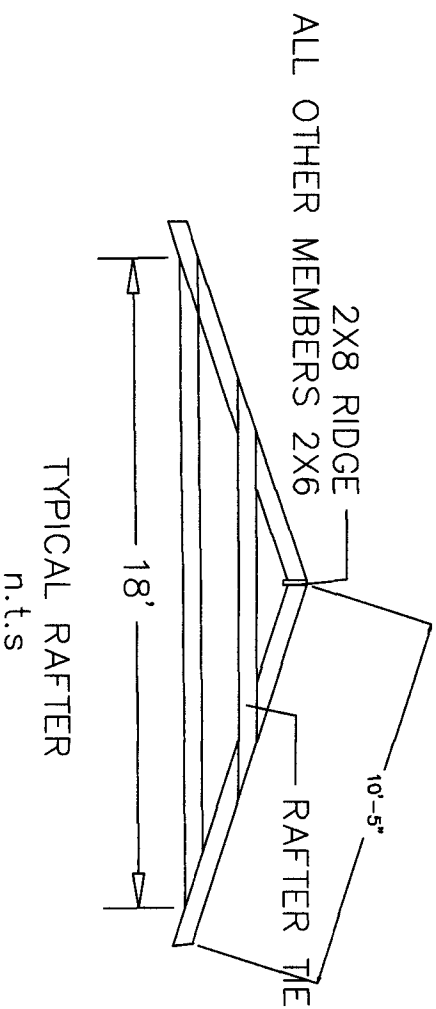
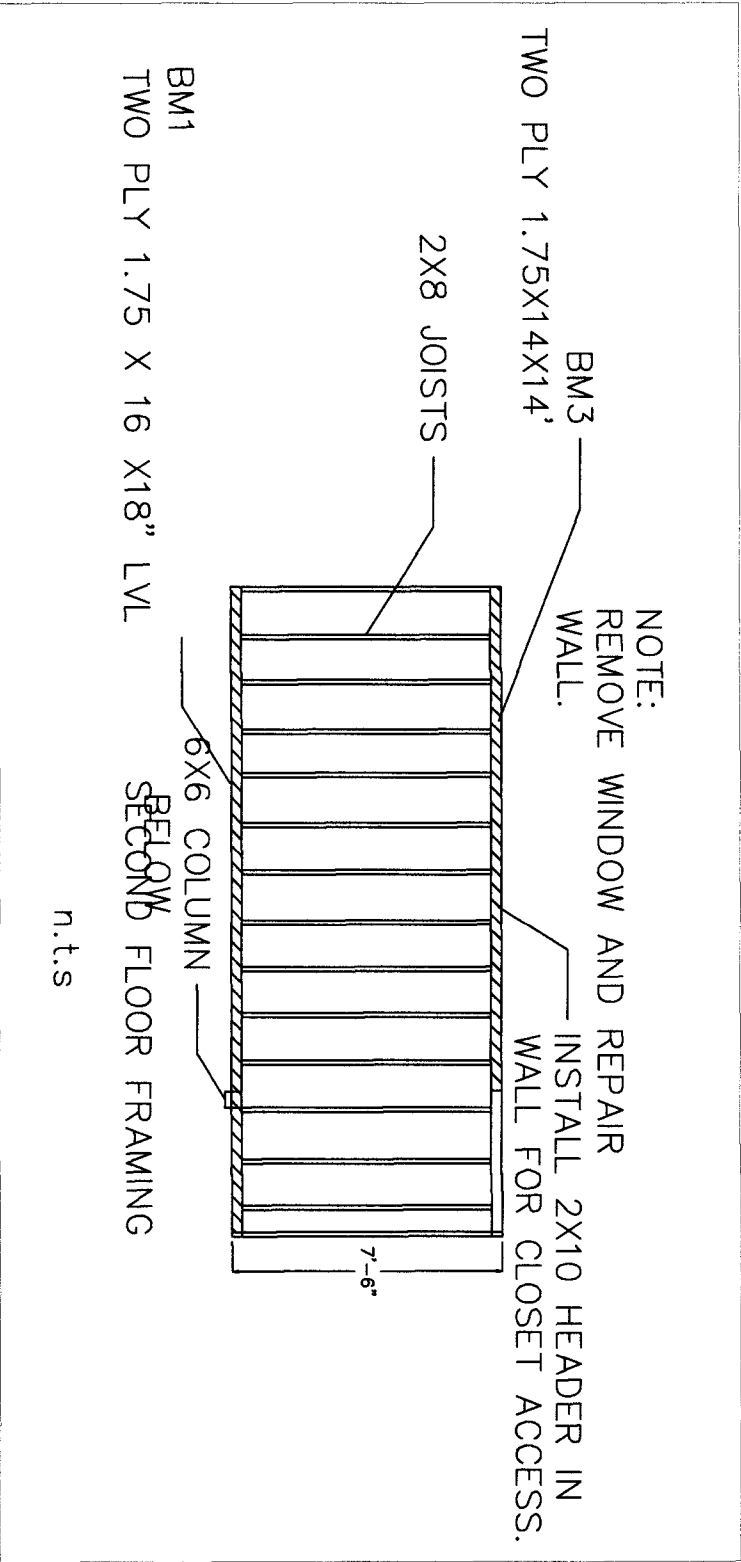
ADDATION

FOOTING DETAILS

165 CRESTHAVEN RD.
SANFORD. NC

CONSTRUCTION
SOLUTIONS
211 CLAREMONT ST.
FAYETTEVILLE, NC

Marshall Engineering Services
7575 McArtans Ford
Linden, NC 28356
910-850-5874
Corp. Licenses P0682



NOTE:
ATTACH RAFTER TIE AND FLOOR JOIST TO RAFTER WITH EIGHT 10D NAILS.

- NOTES:
1. CONTRACTOR TO VERIFY ALL DIMENSIONS.
 2. MINOR DIMENSION CHANGES ARE AUTHORIZED.
 3. ALL WORK MUST COMPLY WITH NC BUILDING CODES.
 4. ELECTRICAL AND PLUMBING BY OTHERS.
 5. THEIRS IS NO BM 2
 6. INSTALL 18"X24" ACCESS DOOR IN FOUNDATION WALL.
 7. OWNER SELECTS DOORS AND WINDOWS. ADJUST LOCATIONS AS NEEDED.
 8. WALL FRAMING IS 2X4 AT 16" o/c. INSTALL APPROPRIATE WINDOW AND DOOR HEADERS.

9. LOADS.
- | | |
|----------|------------------|
| WIND | 115 mph |
| ROOF | 20 psf LIVE |
| FLOOR | 40 psf LIVE |
| CONCRETE | 3500 psi |
| SOIL | 2000 psf BEARING |



ADDATION	165 CRESTHAVEN RD. SANFORD. NC	CONSTRUCTION SOLUTIONS 211 CLAREMONT ST. FAYETTEVILLE, NC	Marshall Engineering Services 7575 McArtans Ford Linden, NC 28356 910-850-5874 Corp. Licenses P0682
DETAILS & NOTES			