



Search

Compose

Inbox

Starred

Snoozed

Important

Sent

Drafts

1



Signing in will sign you into Hangouts across Google. Learn more

Updated Quote Info

Inbox x

Brandon.Dowell@cardinalcarports.com

to me

38' Wide x 35' Long (Base Length) / 36' Long (Roof Overhang) Enclosed Garage with Lean To Attachment
26' Wide x 36' Long Roof/35' Long Base Enclosed Garage with Lean To Attachment

- Vertical Roof System (BEST)
- 12 Gauge (BEST)
- 12' Side Height
- 4' Corner Braces on Every Leg/ Welded Trusses in Roof Spaced 5' on Centers (3:12 Pitch)
- Side Walls and End Walls Closed with Horizontally Oriented Panels (Post Spacing 5' Centers)
- (1) 9' Wide x 8' Tall Garage Door on 35' Side Wall
- (2) 10' Wide x 10' Tall Garage Doors on 24' End Walls – 1 Per End Wall
- (2) 36" x 80" Personnel/Walk-in Door(s) - See Rendering for placement
 - 1/2" Moisture Barrier Insulation included in Roof Only of Enclosed Structure (R-Value = 5)
 - Black Roof Panels
 - Light Gray (Pewter Gray) Wall Panels
 - White Trim

(1) 12' Wide x 36' Long Lean To Attachment on Opposite Wall of 9'W x 8'H garage door

- Vertical Roof System (BEST)
- 12 Gauge (BEST)
- 9' Side Height (On Low Side / Will Tie into 12' Eave of Main Structure on Tall Side) – Post Spacing 5' Centers
- No Panels/Gables on Outer Walls of Lean To Attachment

For the 140 MPH Wind/35 PSF Snow Engineer Certified Unit

The price for the unit, delivered and installed on your level, unobstructed job site is **\$14,845.00 plus tax.** (\$15,884.15 with t

- A down payment of \$2,713.32 would get your order started
- The balance can be paid with check, money order, or debit/credit card once the unit is installed.
- Prices include Delivery and Installation on your level site.

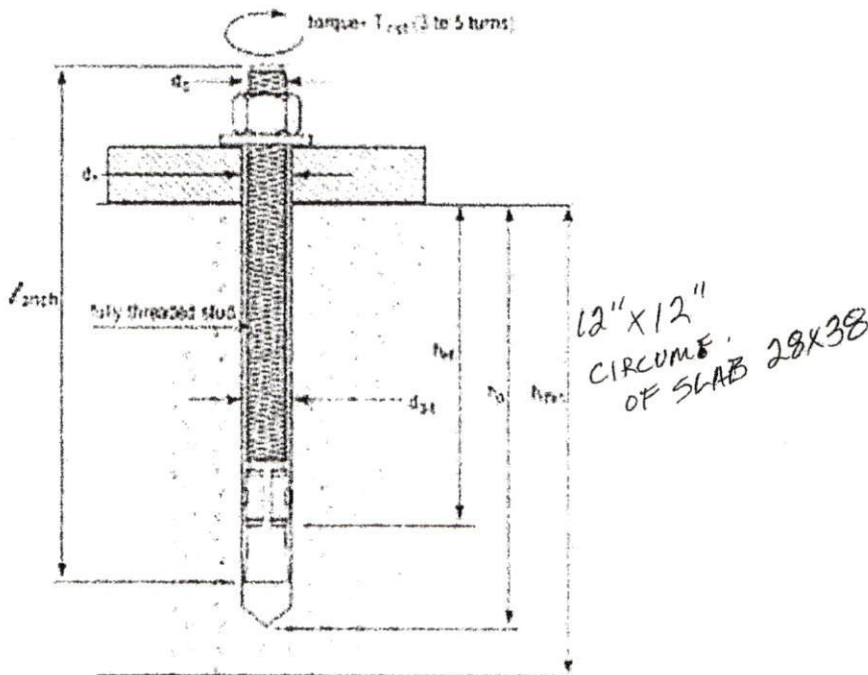
Cement Pad Spec's:

(The cement pad's minimum size needs to be the same as the footprint of the building. If your contractor recommends a larger pad, that is fine. This is just the minim size we recommend. Also, make sure to check with your permitting office to see if they'll have more extensive requirements for the foundation than what we recommend. Sometimes they'll want deeper footers, or a larger pad, etc. than what we recommend, so if that ends up being the case, go with their requirements over my recommendations.)

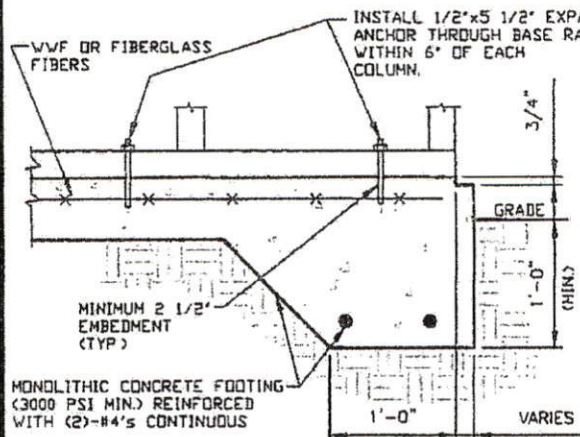
Pad Size: ~~36~~ Wide x 35' Long (Outside to Outside)

Footer Detail: Include a 12" x 12" Footer with (2) #4 continuous rebar in each footer. Minimum weight rating of 3,000 psi. A 4" Pad can be poured on top of the footers. (16" Deep x 12" wide if including the pad with the footer dimensions.)

We will anchor this unit to your pad, using 'Redhead' Expansion Sleeve Cement Wedge Anchors. No need to include any bolts while pouring the pad, as we will take care of this during installation.



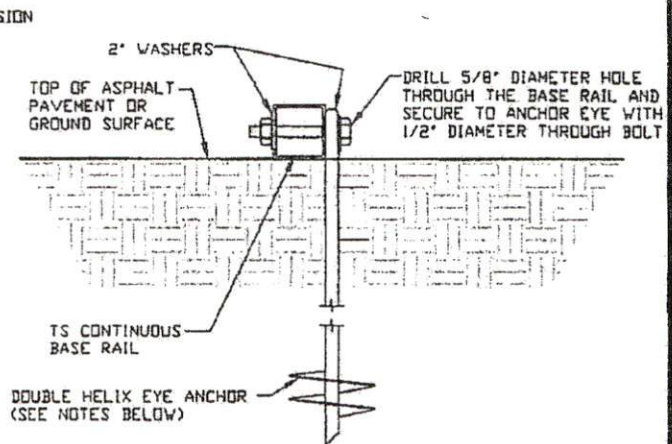
BASE RAIL ANCHORAGE OPTIONS FOR LOW WIND SPEED



3A

CONCRETE MONOLITHIC SLAB BASE RAIL ANCHORAGE

SCALE: NTS
(MINIMUM ANCHOR EDGE DISTANCE IS 4")



3B

GROUND BASE HELIX ANCHORAGE

SCALE: NTS (CAN BE USED FOR ASPHALT)

GENERAL NOTES

CONCRETE:

CONCRETE SHALL HAVE A MINIMUM SPECIFIED COMPRESSIVE STRENGTH OF 3,000 PSI AT 28 DAYS.

COVER OVER REINFORCING STEEL:

FOR FOUNDATIONS, MINIMUM CONCRETE COVER OVER REINFORCING BARS SHALL BE PER ACI-318:
3 INCHES IN FOUNDATIONS WHERE THE CONCRETE IS CAST AGAINST AND PERMANENTLY IN CONTACT WITH THE EARTH OR EXPOSED TO THE EARTH OR WEATHER, AND 1 1/2 INCHES ELSEWHERE.

REINFORCING STEEL:

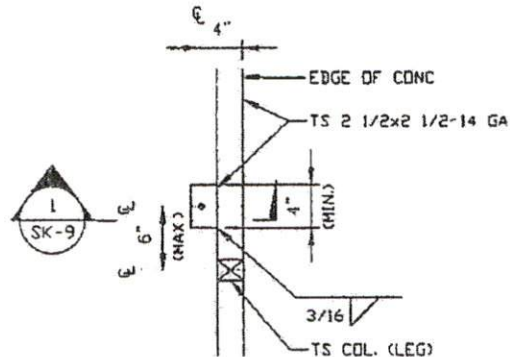
THE TURNDOWN REINFORCING STEEL SHALL BE ASTM A615 GRADE 60. THE SLAB REINFORCEMENT SHALL BE WELDED WIRE FABRIC MEETING ASTM A185 OR FIBERGLASS FIBER REINFORCEMENT.

REINFORCEMENT MAY BE BENT IN THE SHOP OR THE FIELD PROVIDED:

- 1 REINFORCEMENT IS BENT COLD
- 2 THE DIAMETER OF THE BEND, MEASURED ON THE INSIDE OF THE BAR, IS NOT LESS THAN SIX-BAR DIAMETERS.
- 3 REINFORCEMENT PARTIALLY EMBEDDED IN CONCRETE SHALL NOT BE FIELD BENT

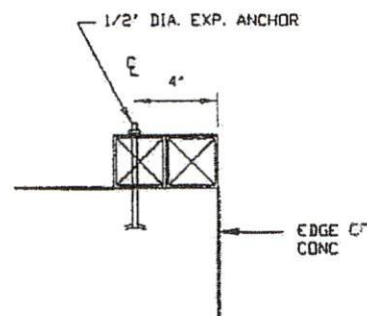
HELIX ANCHOR NOTES:

- 1 FOR VERY DENSE AND/OR CEMENTED SANDS, COARSE GRAVEL AND COBBLES, CALICHE, PRELOADED SILTS AND CLAYS USE MINIMUM (2) 4' HELICES WITH MINIMUM 30 INCH EMBEDMENT.
- 2 FOR CORAL USE MINIMUM (2) 4' HELICES WITH MINIMUM 30 INCH EMBEDMENT.
3. FOR MEDIUM DENSE COARSE SANDS, SANDY GRAVELS, VERY STIFF SILTS AND CLAYS USE MINIMUM (2) 4' HELICES WITH MINIMUM 30 INCH EMBEDMENT.
- 4 FOR LOOSE TO MEDIUM DENSE SANDS, FIRM TO STIFF CLAYS AND SILTS ALLUVIAL FILL USE MINIMUM (2) 6' HELICES WITH MINIMUM 50 INCH EMBEDMENT
5. FOR VERY LOOSE TO MEDIUM DENSE SANDS, FIRM TO STIFFER CLAYS AND SILTS, ALLUVIAL FILL USE MINIMUM (2) 8' HELICES WITH MINIMUM 60 INCH EMBEDMENT.



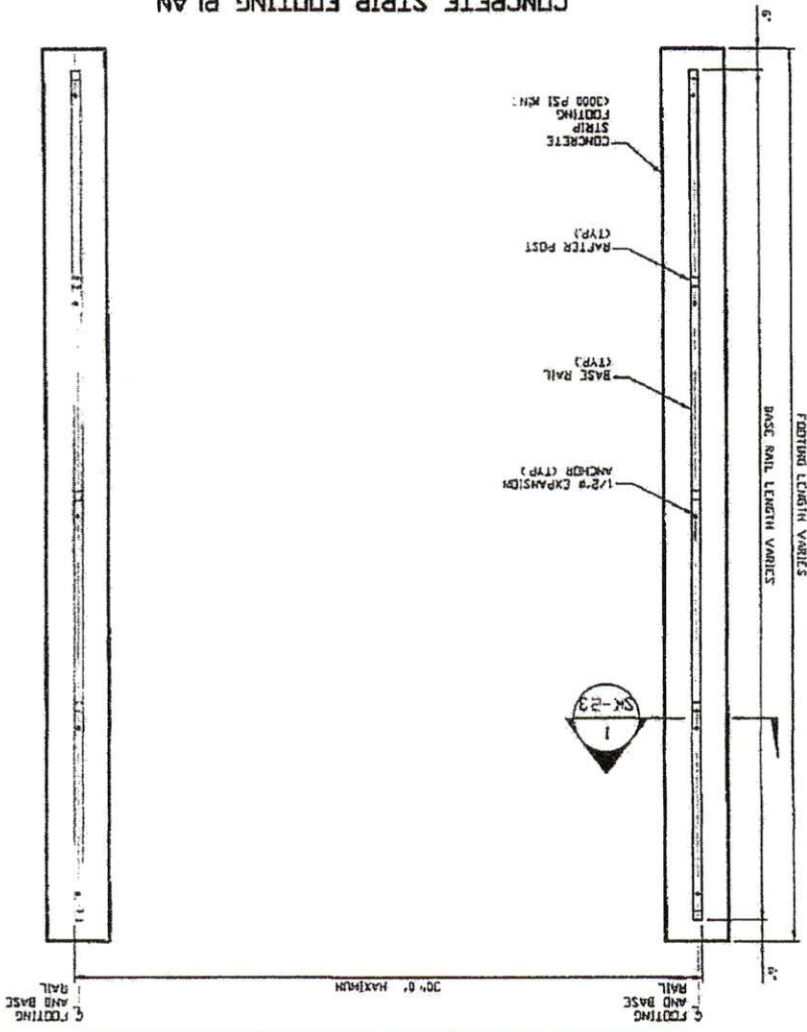
TYPICAL ANCHOR DETAIL WHEN BASE RAIL IS NEAR EDGE OF CONCRETE

SCALE: NTS



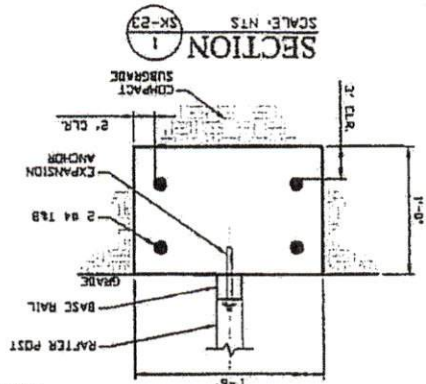
SECTION 1
SCALE: NTS

OPTIONAL CONCRETE STRIP FOOTING



CONCRETE STRIP FOOTING PLAN

SCALE N.T.S.

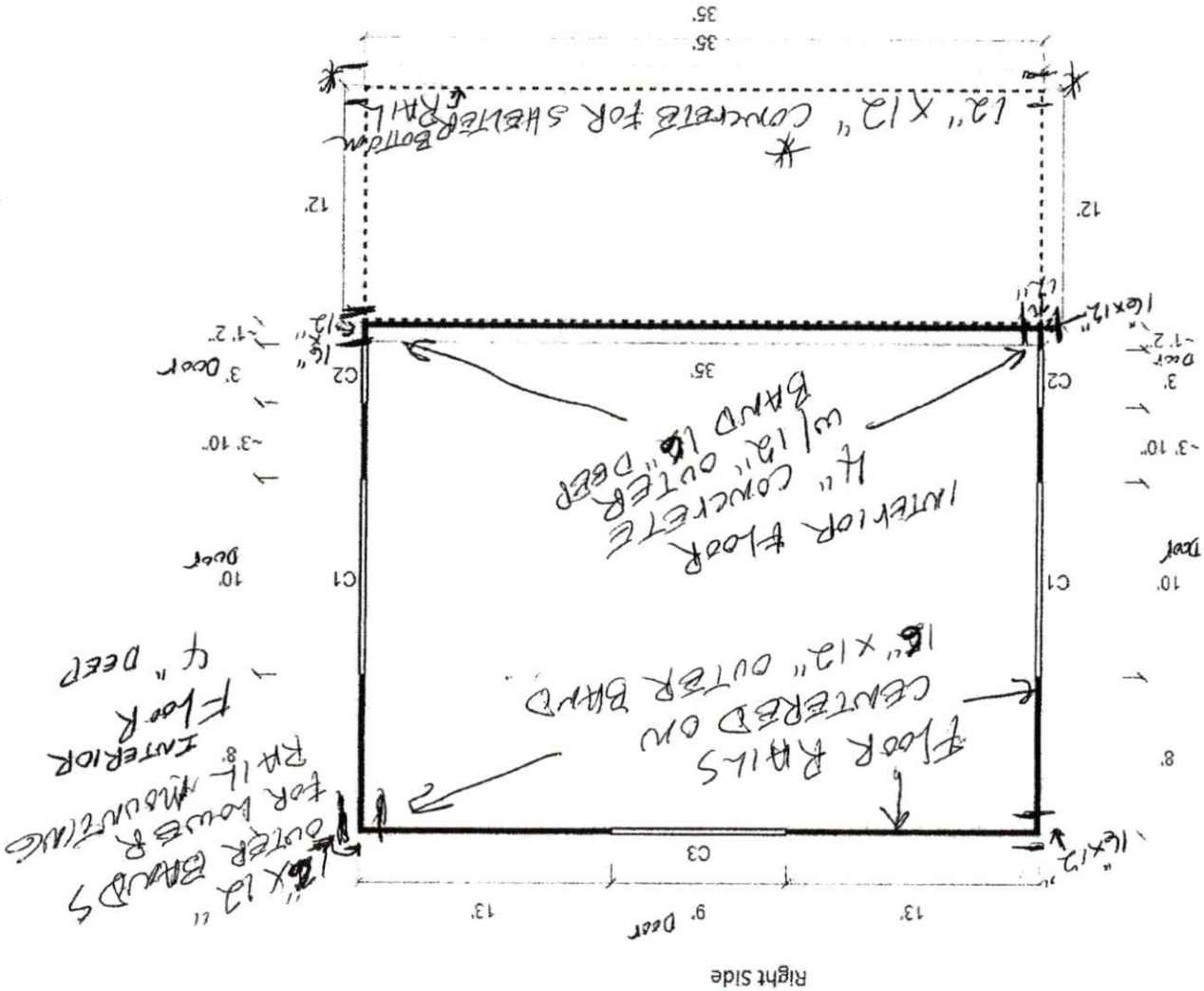


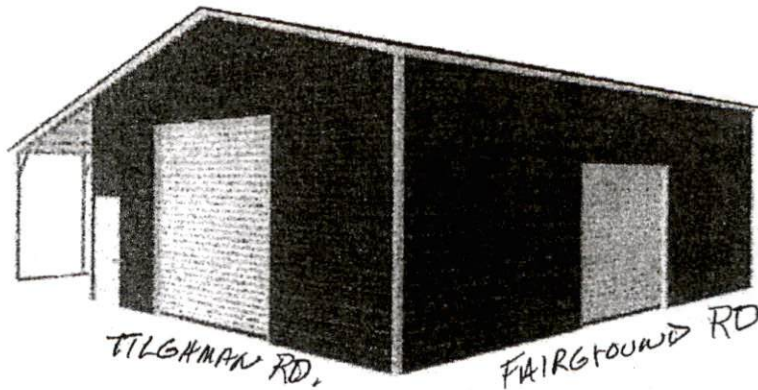
SECTION 1

SCALE N.T.S.

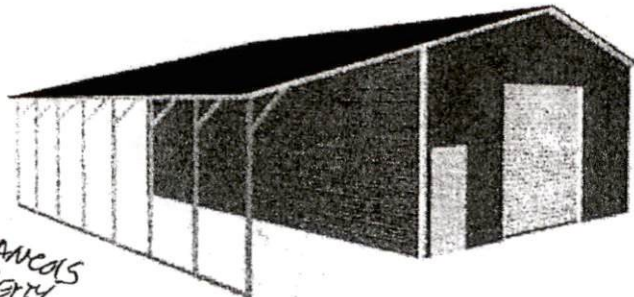
SCALE N.T.S.

5MB 28' X 38'
 BUILDING RAILS 2x35' OUTSIDE TO OUTSIDE
 ROOF 2x36' OUTSIDE TO OUTSIDE
 SHELTER 12' X 36' NO CONCRETE FLOOR





NEW 30' x 12' 6" H



NEW 30' x 12' 6" H

