

THIS LAYOUT IS TO BE USED AS A TRUSS PLACEMENT GUIDE ONLY.
PLEASE REFER TO BUILDING PLANS FOR BUILDING CONSTRUCTION AND DETAILS,
SUCH AS PLUMBING OR DUCT DROPS.

**PROPOSED DESIGN-
NOT FOR
CONSTRUCTION**

Jose Santiago
Roof Trusses
2' Cantilever
3' Overhang
2' OC

Roof Truss Loading per
2018 NC Residential Code

Top Chord Live Load 20# PSF
Top Chord Dead Load 10# PSF
Bottom Chord Live Load 0# PSF
Bottom Chord Dead Load 10# PSF

Trusses are designed for additional
storage load wherever a 42"x24"
box will fit between the webs.

△ - This symbol denotes left end of
truss as shown on truss drawings

● - Approximate location of toilet
drop. Builder please confirm.

Truss connections by others:

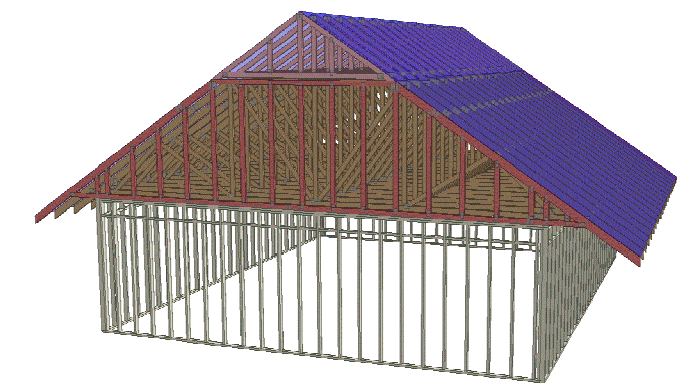
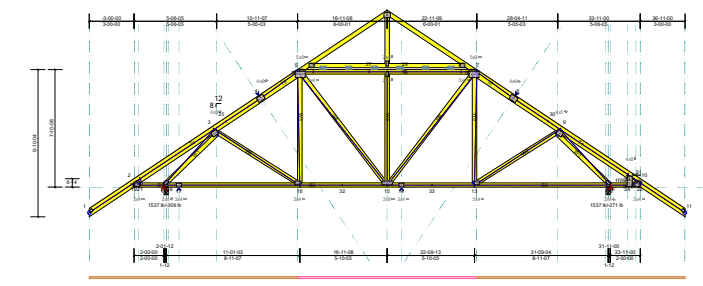
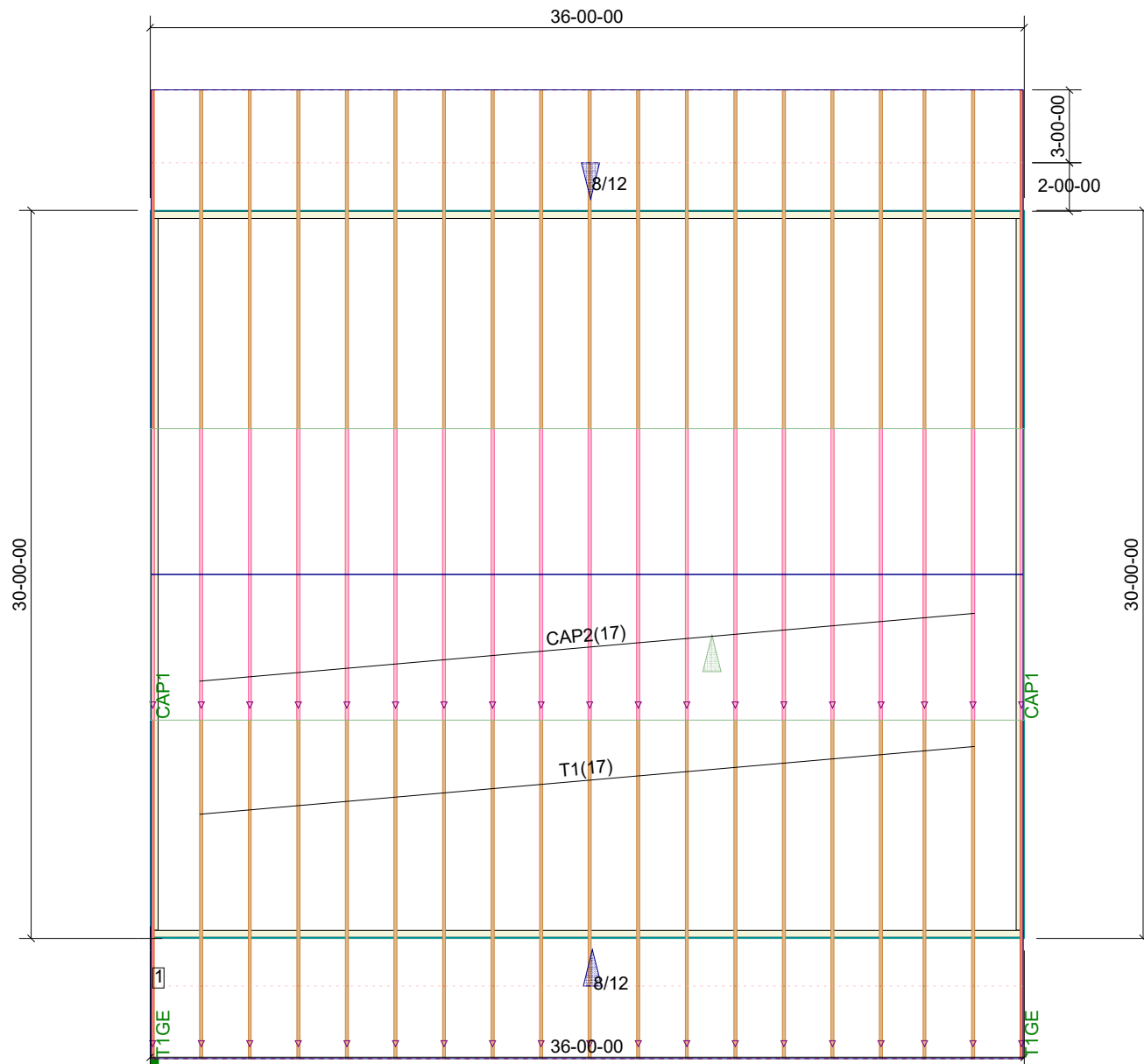
Ⓝ -Nailed
Ⓛ -Ledger

Notes:

- Exterior dimensions shown are assumed to be:
 Out-to-out of stud
 Out-to-out of sheathing
- Adjust truss locations as needed for plumbing and mechanical clearance. Unless otherwise noted, trusses may be shifted as long as O.C. spacing shown is not exceeded.
- Do not cut, drill, or otherwise damage any part of any truss without prior approval from Peak Truss.
- Do not approve drawings if any information herein is unclear. Once ordered trusses will be fabricated as approved.
- Please contact Peak Truss Builders with any questions. We are available to help any way we can. We can be reached at 919-545-5555 or sales@peaktruss.com

Job #
Q-2000853

Jose Santiago



Date Quoted:

Designer:
Coordinator L

Chuck Smith Construction
129 Steel St
Sanford, NC
27330

**Peak Truss
Builders, LLC**
PO Box 340, New Hill, NC 27562