

SITE PLAN APPROVAL

DISTRICT RA20 USE 1lx80
Swmh
#BEDROOMS 3

10-2-19 K.A.B.
ZONING ADMINISTRATOR

Operator
10-2-2019

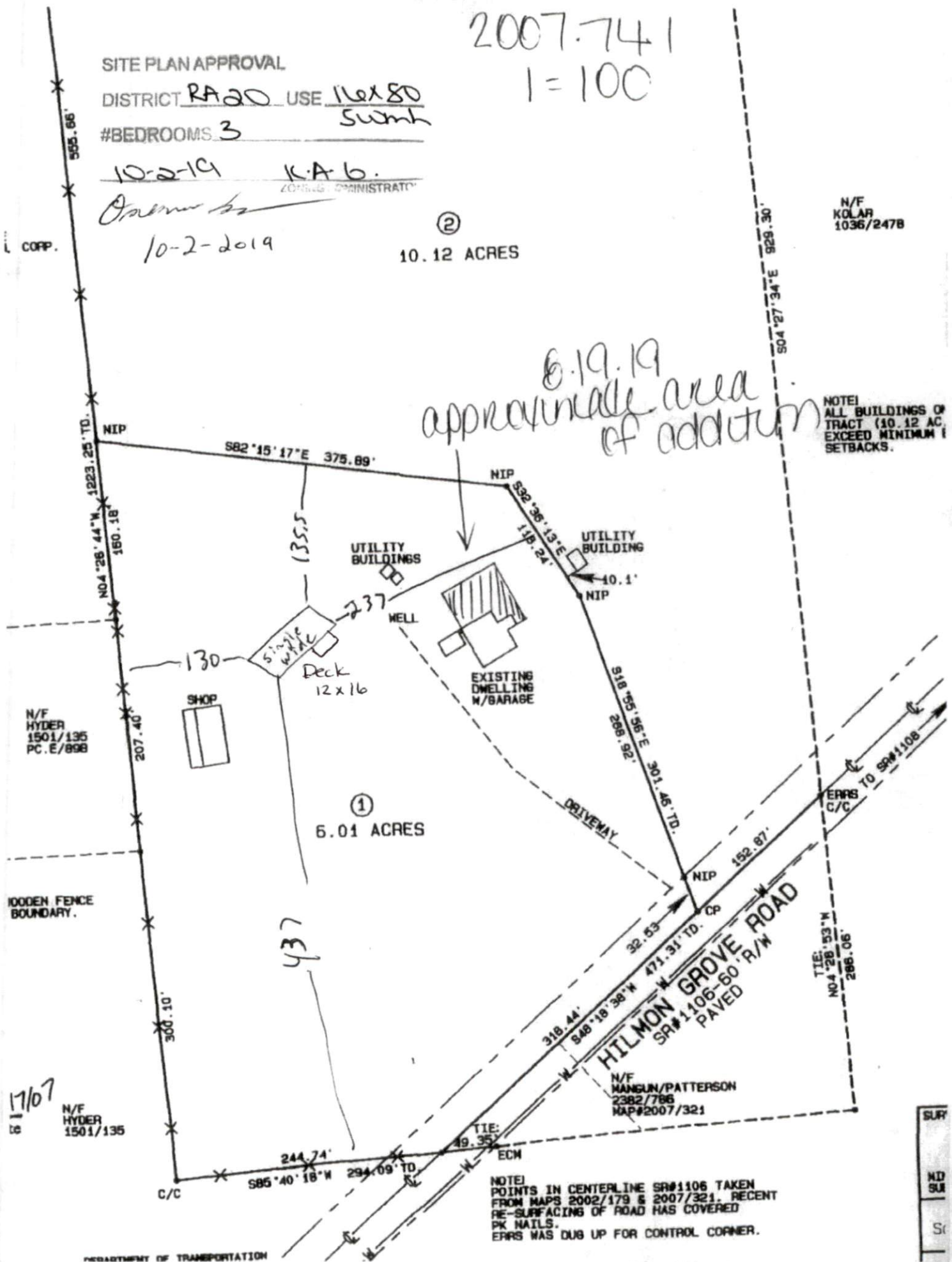
2007-741
1=100

②
10.12 ACRES

N/F
KOLAR
1036/2478

6.19.19
approximate area
of addition

NOTE!
ALL BUILDINGS OF
TRACT (10.12 AC,
EXCEED MINIMUM
SETBACKS.



N/F
HYDER
1501/135
PC. E/898

WOODEN FENCE
BOUNDARY.

①
6.01 ACRES

17/07
N/F
HYDER
1501/135

HILMON GROVE ROAD
SR#1106-60 R/W
PAVED

N/F
MANGUN/PATTERSON
2382/786
MAP#2007/321

NOTE!
POINTS IN CENTERLINE SR#1106 TAKEN
FROM MAPS 2002/179 & 2007/321. RECENT
RE-SURFACING OF ROAD HAS COVERED
PK NAILS.
ERRS WAS DUG UP FOR CONTROL CORNER.