

**GREG ROBINSON, P.E.**

**CONSULTING ENGINEER**

6512 Six Forks Road, Suite 403A  
Raleigh, North Carolina 27615

919.846.4752  
info@gar-pe.com

# THE Shed Depot

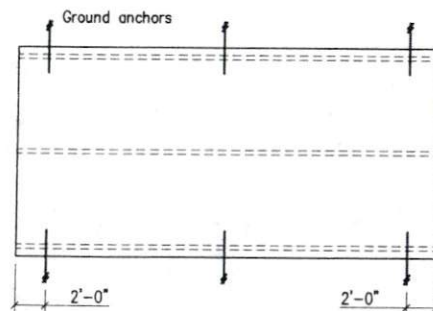


## OF NORTH CAROLINA

1732 Westover Drive  
Sanford, North Carolina 27330

919.776.0206  
info@sheddepotnc.com

## 12'-0" x 12'-0" to 12'-0" x 28'-0" A-Frame Shed



Ground Anchors

(Ground Anchors) Scale: 1/8"=1'-0"

### Ground Anchor Schedule

Building Length	Number of Ground Anchors Each Long Side	
30 ft - 36 ft	3	
12 ft - 28 ft	2	

Notes:

- Minimum uplift capacity of each anchor: 2,300 pounds
- Install ground anchors and strapping in accordance with manufacturer's instructions



DRAWING INDEX:

- C1 Cover Sheet and General Notes
- 2 Floor and Wall Framing Plans
- 3 Roof Framing Plans and Exterior Elevations
- 4 Wall Framing Elevations and Wall Section
- D1 Details
- D2 Details

GENERAL NOTES AND OUTLINE SPECIFICATIONS

01000 GENERAL

- Design Live Loads
  - Floor 40 psf
  - Roof 20 psf
- Ground Snow Loads (2018 NC Building Code, 2015 IBC, ASCE 7-10)  
Ground Snow Load: 15 psf
- Wind loads (2018 NC Building Code, 2015 IBC, ASCE 7-10)  
Basic Wind Velocity (ultimate): 120 mph; Exposure: C
- Lateral design controlled by Wind Loads.

02000 FOUNDATION

- Design soil bearing capacity: 2,000 psf (presumed).

06090 PRE-ENGINEERED WOOD CONNECTORS

- Connectors shall be hot-dipped galvanized or electro-plated galvanized with a minimum coating of G90.
- Nails shall be "common" unless otherwise noted in the drawings.

06110 WOOD FRAMING

- Unless noted otherwise: kiln-dried, S-P-F, #2 grade, surfaced dry, 15 percent maximum moisture content.  
Floor joists: preservative-treated, kiln-dried, Southern Pine, #2 grade, surfaced dry, 15 percent maximum moisture content.  
Mud sills: preservative treated, kiln-dried, Southern Pine, #2 grade, surfaced dry, 19 percent maximum moisture content.

Nail sizes:	Pennyweight	Length (inches)	Diameter (inches)
	8d	2.5	0.131
	10d	3	0.148
	12d	3.25	0.148

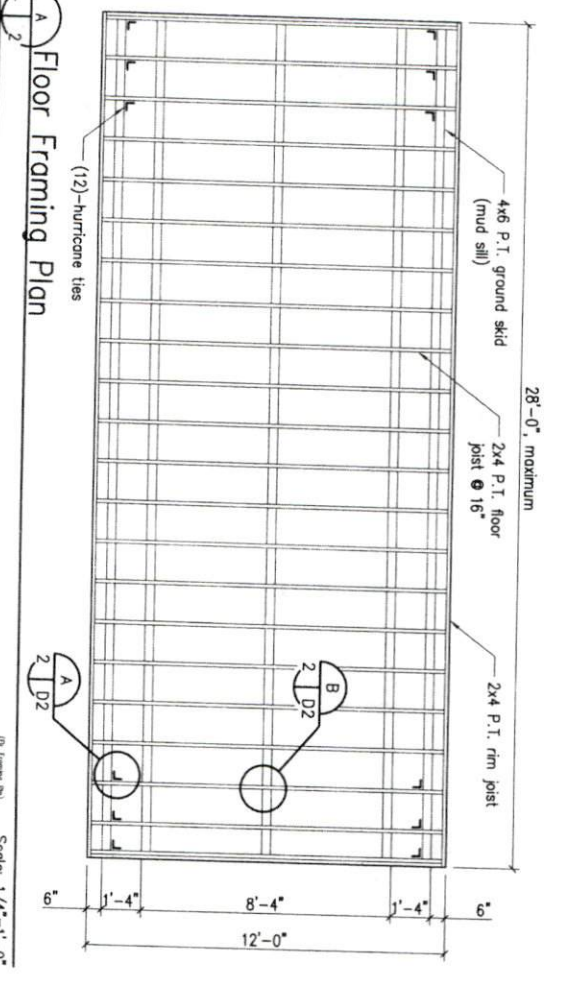
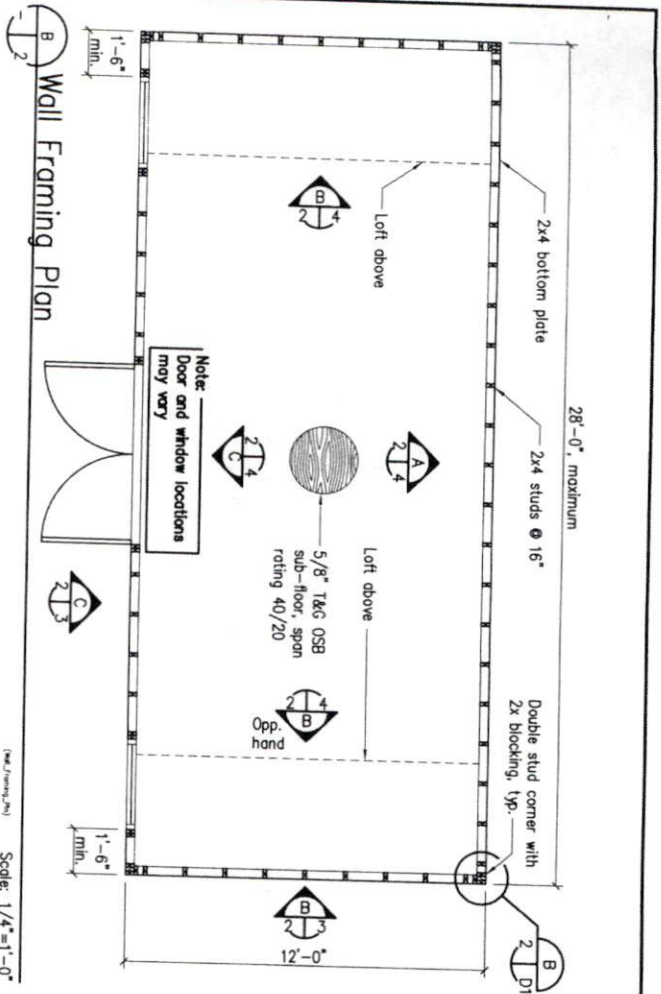
06120 STRUCTURAL WOOD PANELS

- Sheathing shall conform to the grading rules of U.S. Product Standard PS 1, latest edition, and shall have appropriate grade trade mark of an American Plywood Association approved agency on each plywood panel. Sheathing shall be APA rated sheathing in thicknesses and span ratings shown drawings. Sheathing shall be applied in full sheets or in largest pieces practical for the area being covered.
- Particleboard sheathing: ANSI A208.1 APA Oriented Strand Board; wood flakes set with waterproof resin binder; unsanded faces.
- Secure roof sheathing perpendicular to framing members with ends staggered and sheet ends over firm bearing.
- Secure wall sheathing with long dimension parallel to wall studs, with ends over firm bearing and staggered.
- Install sheathing two span continuous minimum.

GARPE Project #19009  
Date: 27FEB19

SHT\_C1

**C1**  
1 of 6



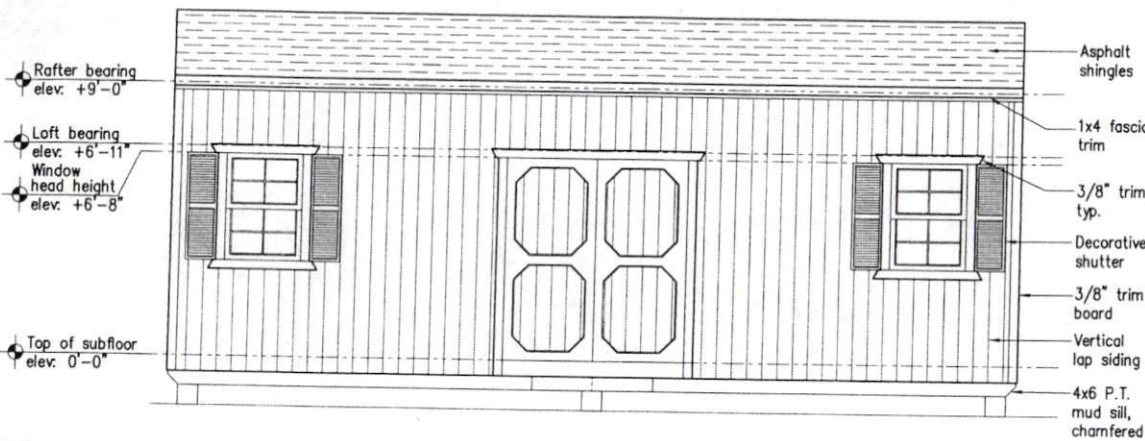
GREGORY A. ROBINSON  
 ENGINEER  
 SEAL  
 13779  
 NORTH CAROLINA  
 PROFESSIONAL



**GREG ROBINSON, P.E.**  
 CONSULTING ENGINEER  
 6512 Six Forks Road, Suite 403A  
 Raleigh, North Carolina 27615  
 (919) 846-4752 (919) 847-8455 Fax  
 greg@reg-robinson.com

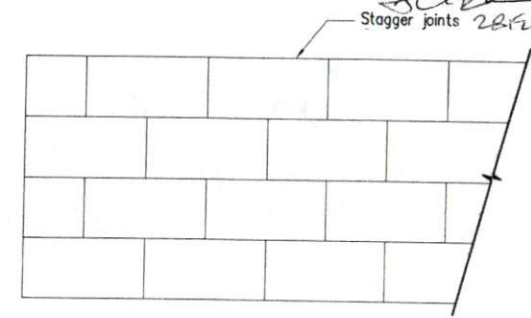
Drawn	GAR	12' x 12' to 28' x 9' Shed
Checked	GAR	
Date	27FEB19	
Rev		
Rev		

GARPE Job # 19009



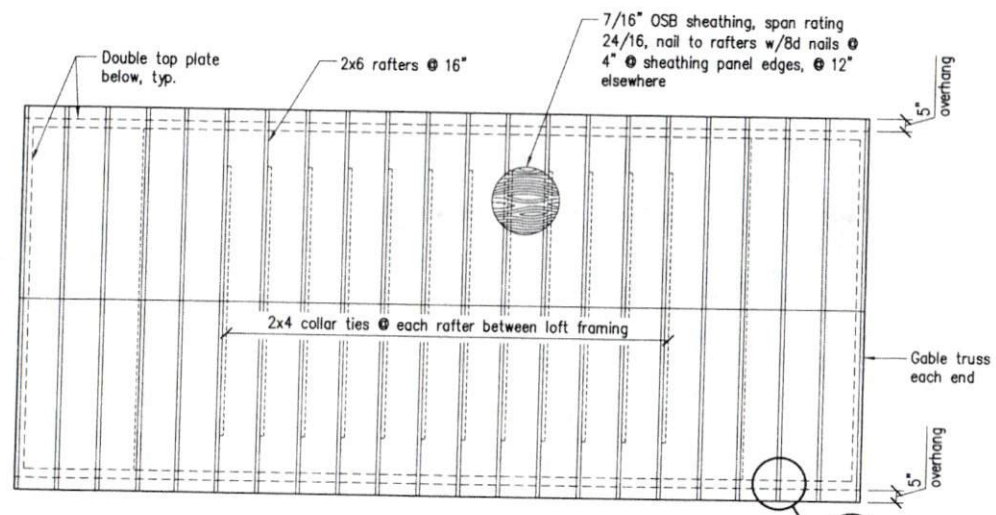
C Exterior Elevation

(Ext\_Elev\_1) Scale: 1/4"=1'-0"



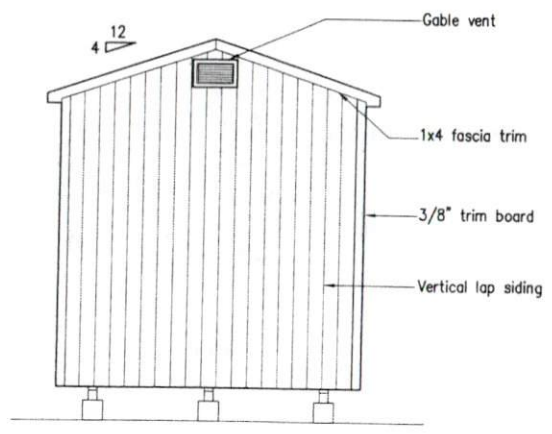
D Sheathing Joint Pattern

(Sheathing\_Joint\_Pattern) Scale: N.T.S.



A Roof Framing Plan

(Roof\_Framing\_Plan) Scale: 1/4"=1'-0"



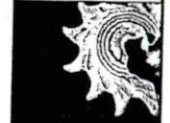
B Exterior Elevation

(Ext\_Elev\_2) Scale: 1/4"=1'-0"



GREG ROBINSON, P.E.  
CONSULTING ENGINEER

6512 Six Forks Road, Suite 403A  
Raleigh, North Carolina 27615  
(919) 846-0352 (919) 842-8455 fax  
greg@garpe.com

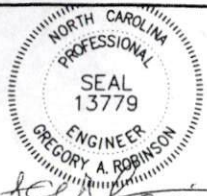


12' x 12' to 28' x 9' Shed

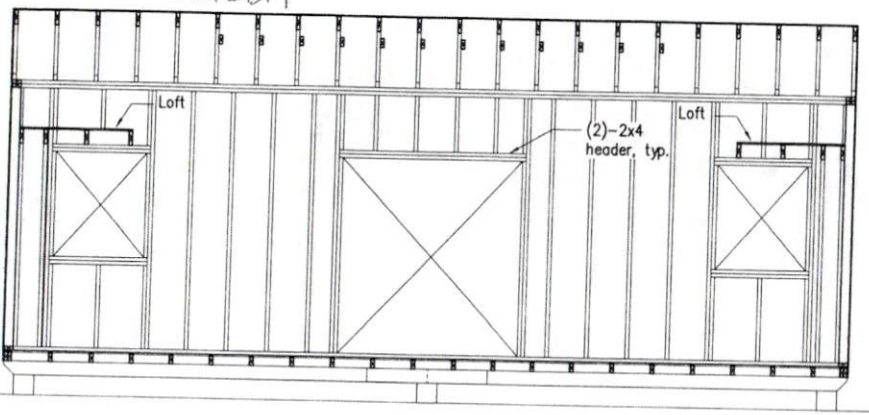
GARPE Job # 19009

Drawn	GAR
Checked	GAR
Date	27FEB19
Rev	
Rev	

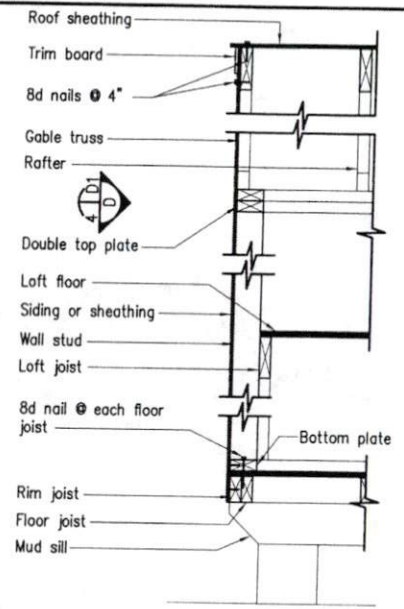
3  
3 of 6



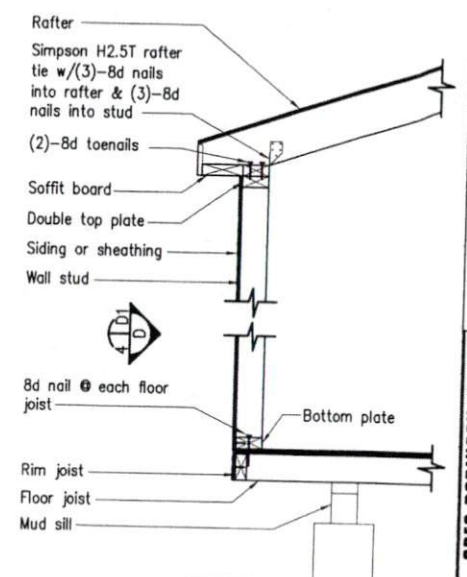
*Greg Robinson*



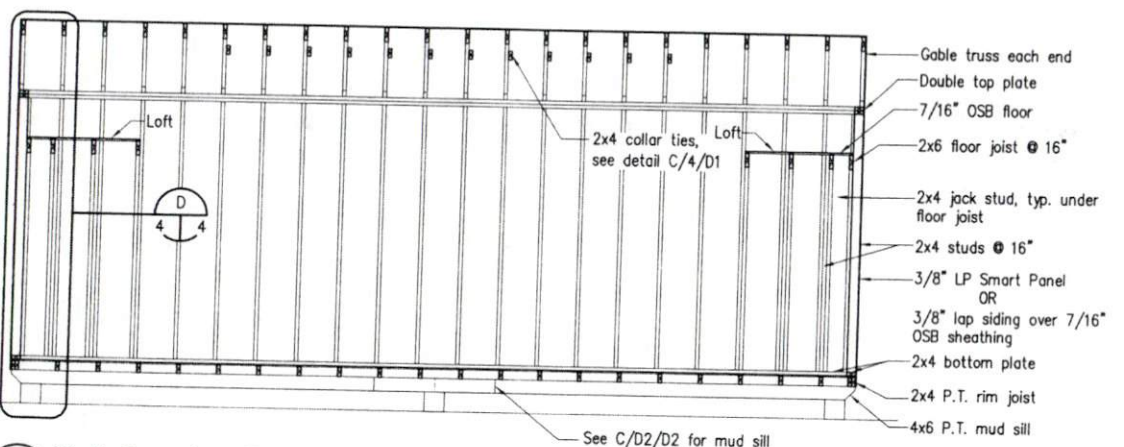
**C** Wall Framing Elevation  
Scale: 1/4"=1'-0"



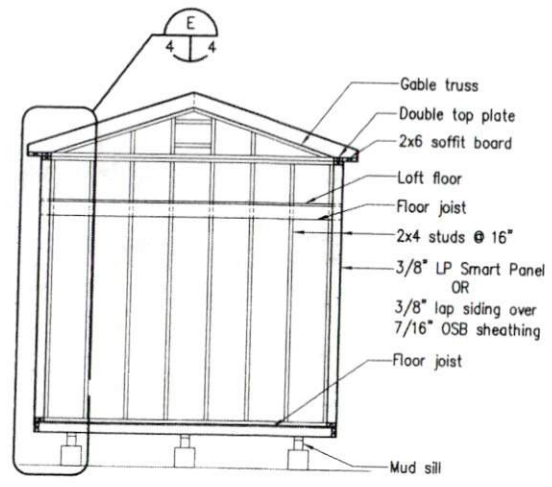
**D** Wall Section  
Scale: 3/4"=1'-0"



**E** Wall Section  
Scale: 3/4"=1'-0"



**A** Wall Framing Elevation  
Scale: 1/4"=1'-0"

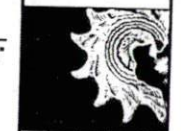


**B** Wall Framing Elevation  
Scale: 1/4"=1'-0"

**THE Shed Depot**  
OF NORTH CAROLINA

**GREG ROBINSON, P.E.**  
CORPORATE ENGINEER

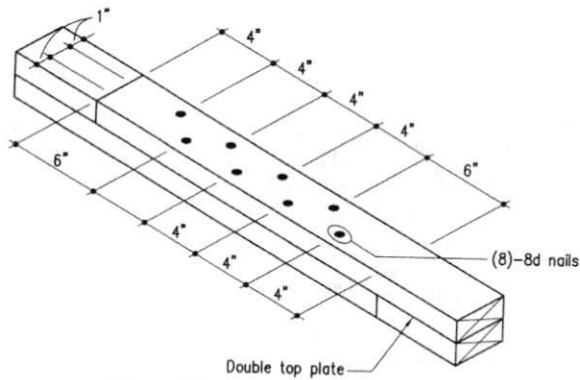
6517 Six Forks Road, Suite 403A  
Raleigh, North Carolina 27615  
(919) 843-1152 (919) 843-8555 fax  
greg@shed-depot.com



12' x 12' to 28' x 9' Shed  
GARPE Job # 19009

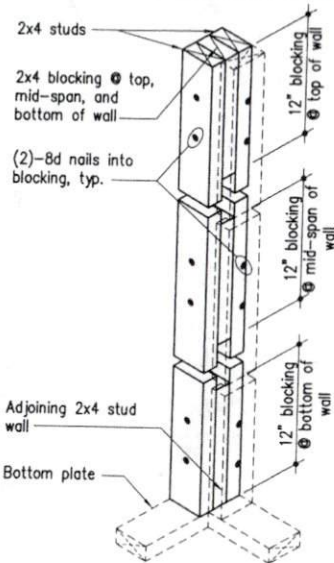
Drawn	GAR
Checked	GAR
Date	27FEB19
Rev	
Rev	

**4**  
4 of 6



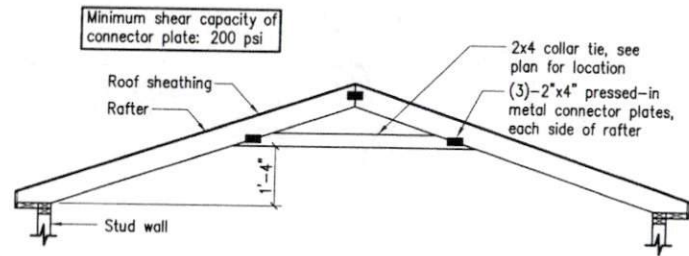
**A**  
3 | D1  
Top Plate Splice Detail

(Top\_Plate\_Splice) Scale: 1 1/2"=1'-0"



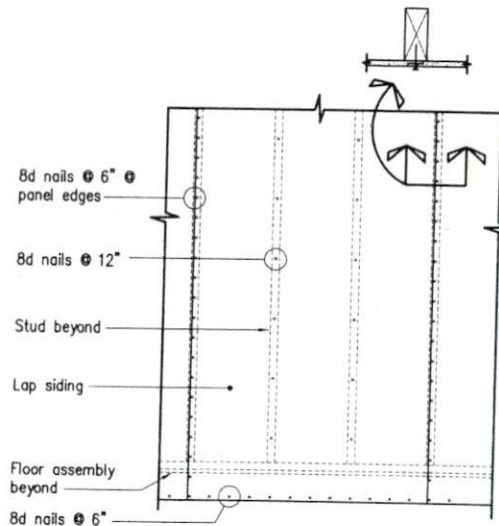
**B**  
2 | D1  
Corner Framing Detail

(Corner\_Detail) Scale: 1"=1'-0"



**C**  
- | D1  
Collar Tie Attachment Detail

(Collar\_Tie) Scale: 3/8"=1'-0"



**D**  
4 | D1  
Panel Nailing Pattern

(Nail\_Pattern) Scale: 1/2"=1'-0"



*Garpe*  
28 FEB 19



**GARPE ROBINSON, P.E.**  
CONSULTING ENGINEER

6512 Six Forks Road, Suite 403A  
Raleigh, North Carolina 27615  
(919) 841-4352 (919) 847-8455 fax  
garpe@garpe-pe.com

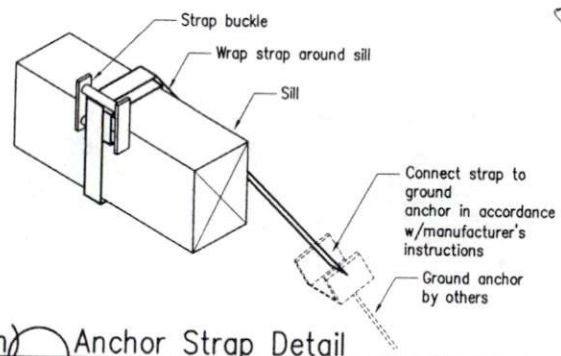
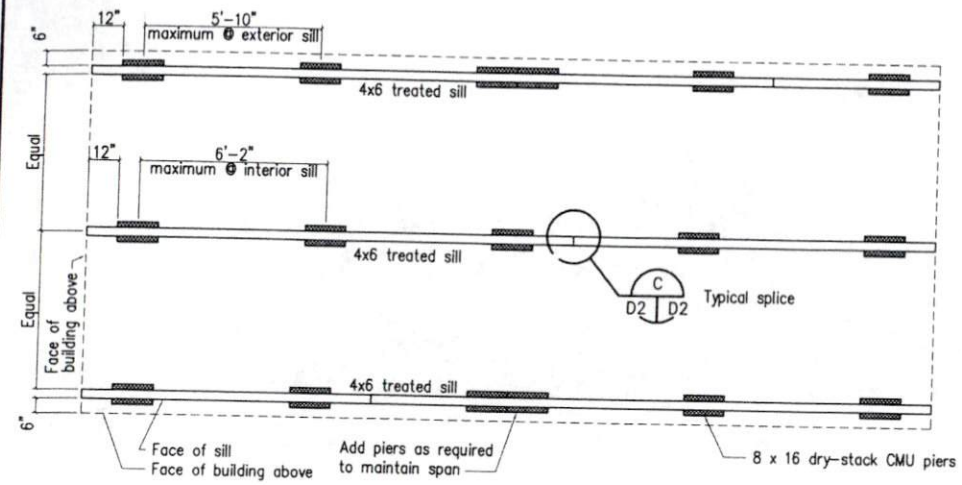


12' x 12' to 28' x 9' Shed

GARPE Job # 19009

Drawn	GAR
Checked	GAR
Date	27FEB19
Rev	
Rev	

**D1**  
5 of 6

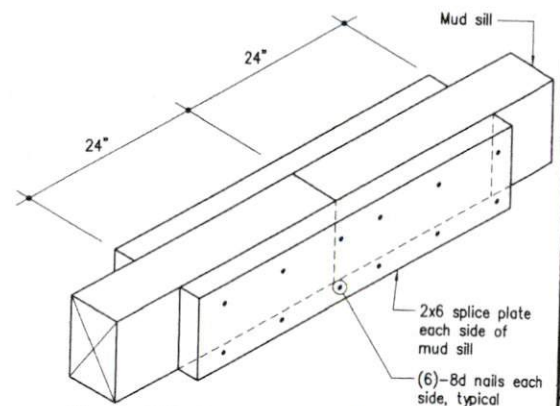
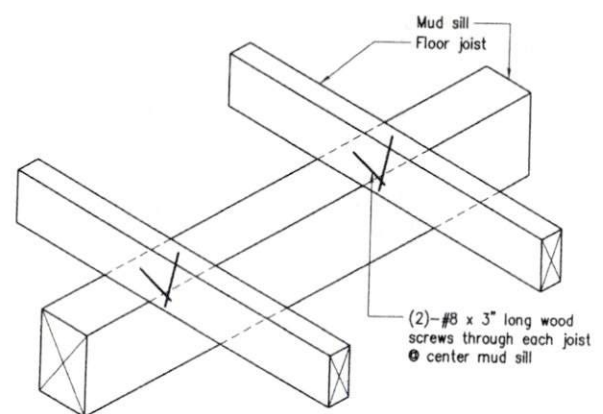
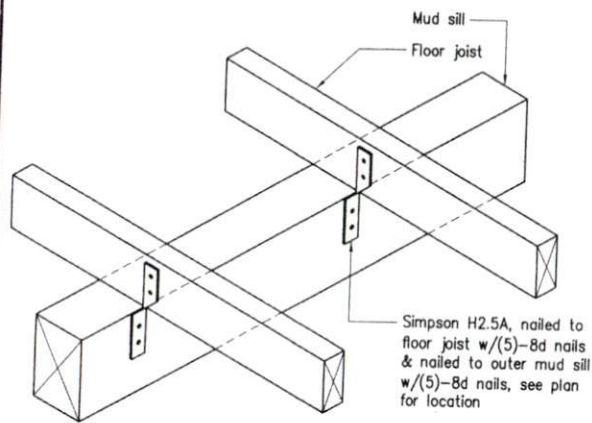


*Greg Robinson*  
28 FEB 19



**GREG ROBINSON, P.E.**  
6512 Six Forks Road, Suite 403A  
Raleigh, North Carolina 27615  
(919) 846-4732 (919) 847-8555 Fax  
greg@shd-nc.com

**Floor Framing and Foundation Pier Plan, 12' x 28' (maximum)** **Anchor Strap Detail**  
Scale: 1/4"=1'-0" (STRAP) Scale: 1 1/2"=1'-0"



**A** Floor Joist to Outer Mud Sill Connection Detail  
Scale: 1 1/2"=1'-0"

**B** Floor Joist-to-Center Mud Sill Connection Detail  
Scale: 1 1/2"=1'-0"

**C** Mud Sill Splice Detail  
Scale: 1 1/2"=1'-0"

12' x 12' to 28' x 9' Shed  
GARPE Job # 19009

Drawn GAR  
Checked GAR  
Date 27FEB19  
Rev  
Rev

**D2**  
6 of 6