

N 87°04'30" W S 87°04'30" E

BLAZED & PAINTED LINE

EXISTING REBAR

641.76'

S 04°01'15" W  
(65.71')

730.82'

Unsuitable Soil  
by H. OWEN  
& ASSOC.

Provisionally  
Suitable Soil  
for Modified  
or Alternative  
Systems

Provisionally  
Suitable Soil

**SITE PLAN APPROVAL**

**DISTRICT** RA30 **USE** Disturbed  
garage

**#BEDROOMS**

2.17.20

diouism  
ZONING ADMINISTRATOR

2

TOTAL AREA 243429 S.F. 5.588 AC.  
AREA IN R/W 10971 S.F. 0.252 AC.  
NET AREA 232458 S.F. 5.336 AC.

NORTH CAROLINA  
HARRIS COUNTY  
This Map/Plan was presented for registration  
in this office at Map number 2004  
This 20th day of Jan  
in 11:26 o'clock A.M.

ROBERT S. HARGRAVE  
Register of Deeds  
Ernie M. Lea  
County Register of Deeds

**POST-FRAME  
BARN LOCATION**

WILBURN RD.  
60' PUBLIC R/W

NCSR 1432

TRAN  
WELL

6A

CONC.

APPROX  
65 FT

HOUSE TO BARN  
3

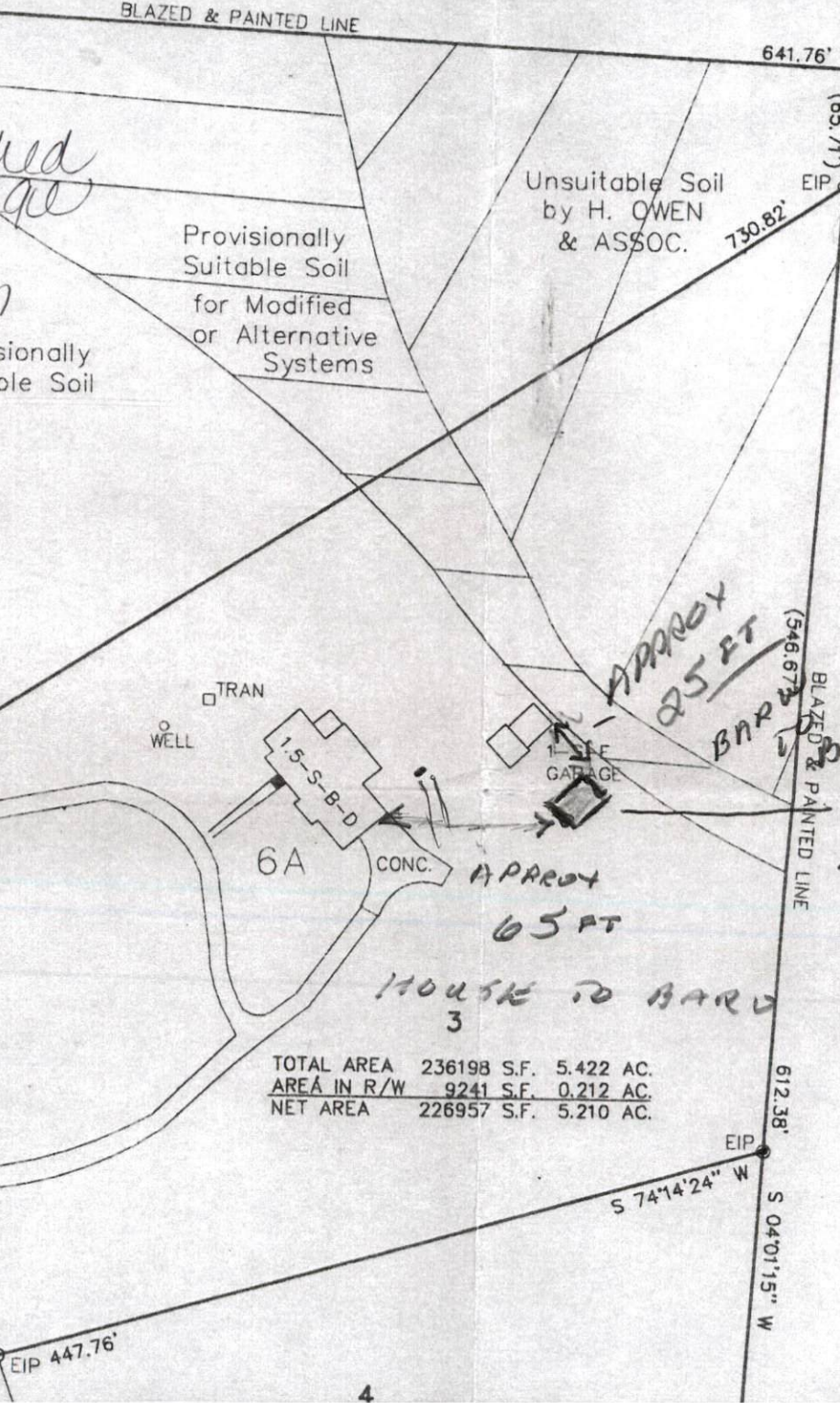
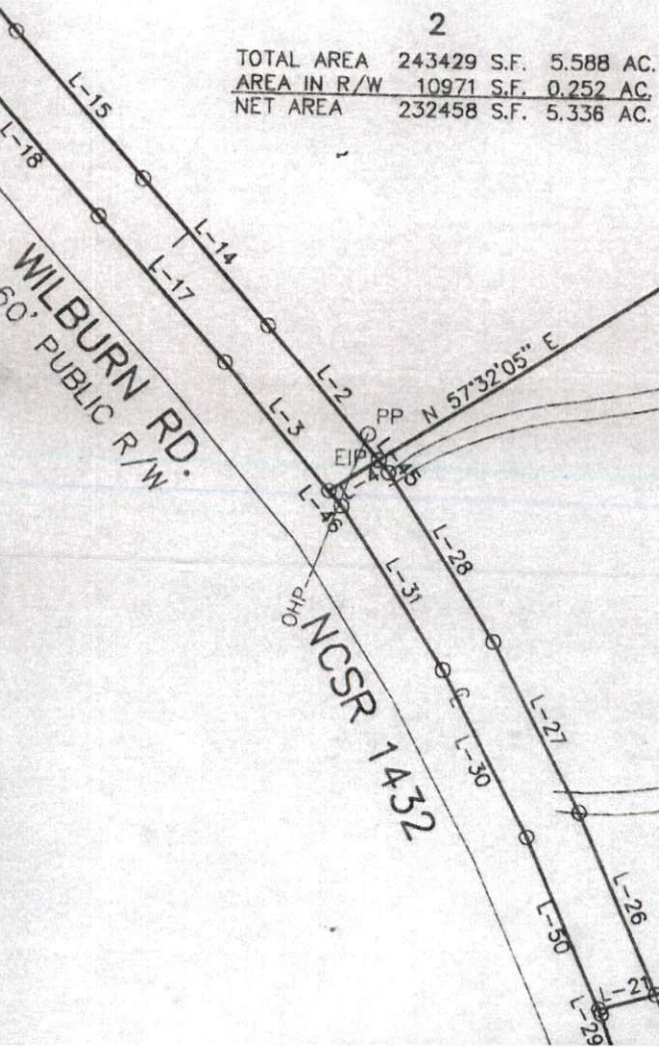
TOTAL AREA 236198 S.F. 5.422 AC.  
AREA IN R/W 9241 S.F. 0.212 AC.  
NET AREA 226957 S.F. 5.210 AC.

APPROX  
25 FT  
BARN

BLAZED & PAINTED LINE

FRANK L. GREINER  
PEGGY J. GREINER  
DB 0928, PG. 234

OWNERS  
KATHRYN C. BAILEY



Registration and signature information, including dates and names.