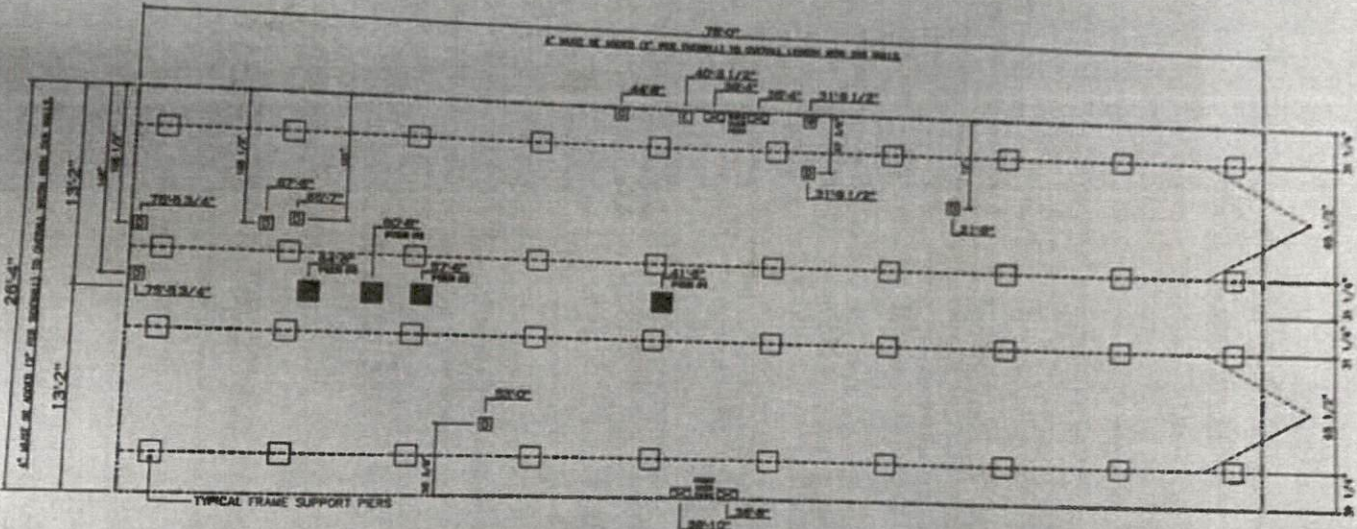


88 Swift Road BRE 52002-0003
 Lillington NC 27654

Breeze 2 settle

20 lb ROOF LOAD OVERALL OPENING PER LOAD 24" BOX WIDTH	OVERALL OPENING (ft) REQUIRED PER LOAD (lb)					
	3	4	5	6	8	10
FOR 30 lb & 40 lb ROOF LOAD REFER TO TABLES 7b & 7c IN THE INSTALLATION MANUAL.	1175	1330	1485	1640	1950	2260



- GENERAL NOTES:**
- PIER LOADS SHOWN ARE TO BE USED TO SIZE THE FOOTINGS BELOW THE MARRIAGEWELL FOR COLUMN SUPPORT PIERS. REFER TO TABLES 6a AND 6c IN THE INSTALLATION MANUAL FOR LOAD ON FRAME PIER FOOTINGS FOR HOMES THAT DO NOT REQUIRE PERIMETER BLOCKING. REFER TO TABLES 7b AND 7c IN THE INSTALLATION MANUAL FOR LOAD ON FRAME PIER FOOTINGS THAT REQUIRE PERIMETER BLOCKING. REFER TO TABLES 10 AND 10a TO DETERMINE FOOTING SIZE FOR ALL PIERS.
 - REFER TO TABLE 9 FOR PIER CONFIGURATION AND MAXIMUM ALLOWABLE HEIGHTS. CROSS REFERENCE THE PIER HEIGHT WITH THE MAXIMUM ALLOWABLE FLOOR HEIGHT LISTED IN THE FRAME TIE-DOWN CHARTS (TABLE 18, 19, AND 20).
 - FLOOR WIDTH SHOWN IS FOR STANDARD PRODUCT ONLY. CONTACT THE MFG PLANT FOR SPECIFICATIONS OF OPTIONS ORDERED.
 - SERVICE DROP LOCATIONS IDENTIFIED ARE APPROXIMATE. THE MAXIMUM SPACING FOR FRAME SUPPORT PIERS FOR 8" I-BEAMS IS 8 FEET, 10" & 12" I-BEAMS ARE 10 FEET.

PIER LEGEND

- = SUPPORT UNDER WINDOW
- ▣ = SUPPORT AT ENTRY CORNER
- ▤ = SUPPORT UNDER ENTRY WALL
- ▥ = PER PERIMETER ENTRY
- ▦ = PER SIDE BEAM
- ▧ = PER FRAMED
- ▨ = 2x-6x8 SUPPORT (8'4" PER 10' & 12' OVER 8-4" I-BEAM PIER)

SERVICE DROP LEGEND

- ⊠ = ELECTRICAL DROP
- ⊡ = WATER FEET
- ⊢ = DRY PLUMBING DROP
- ⊣ = GAS FEET

78'0" (Roof Line Load)

Column Pier #	Distance from 1ft/12"	Pier Load (lb)
1	41.5	3560
2	57.5	3560
3	60.667	1190
4	64.667	1190

2001 30 FT. (3RD PLAN "CONDITIONS")
 30 FT. (4TH/5TH FLOOR/RECESS "CONDITIONS")

CMH
 CONSTRUCTION MATERIALS HANDLING

Product Designer: JSC
PIER LOADS
 20 x 76 Breeze 2

Sent from my iPhone

https://outlook.office.com/mail/inbox/id/AAQkADK0YjAwOTMxLTU0ZTEndVni:05N... 9/11/2020