


- 184 ft
- 164 ft
- 12 ft
- 16 ft

SITE PLAN APPROVAL

DISTRICT RA30 USE Metal Garage
#BEDROOMS _____
Date 11/24/2020  Zoning Administrator

- EA = EXISTING AXLE
- EN = EXISTING P.K. NAIL
- IPS = IRON PIPE SET
- PK5 = P.K. NAIL SET
- CP = COMPUTED POINT (NOT FOUND OR SET)
- = UTILITY POLE
- = LIGHT POLE

- OVERHEAD UTILITY LINE
- ST = SEPTIC TANK
- WM = WATER VALVE
- R/W = RIGHT-OF-WAY
- C = CENTERLINE

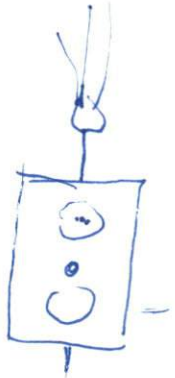
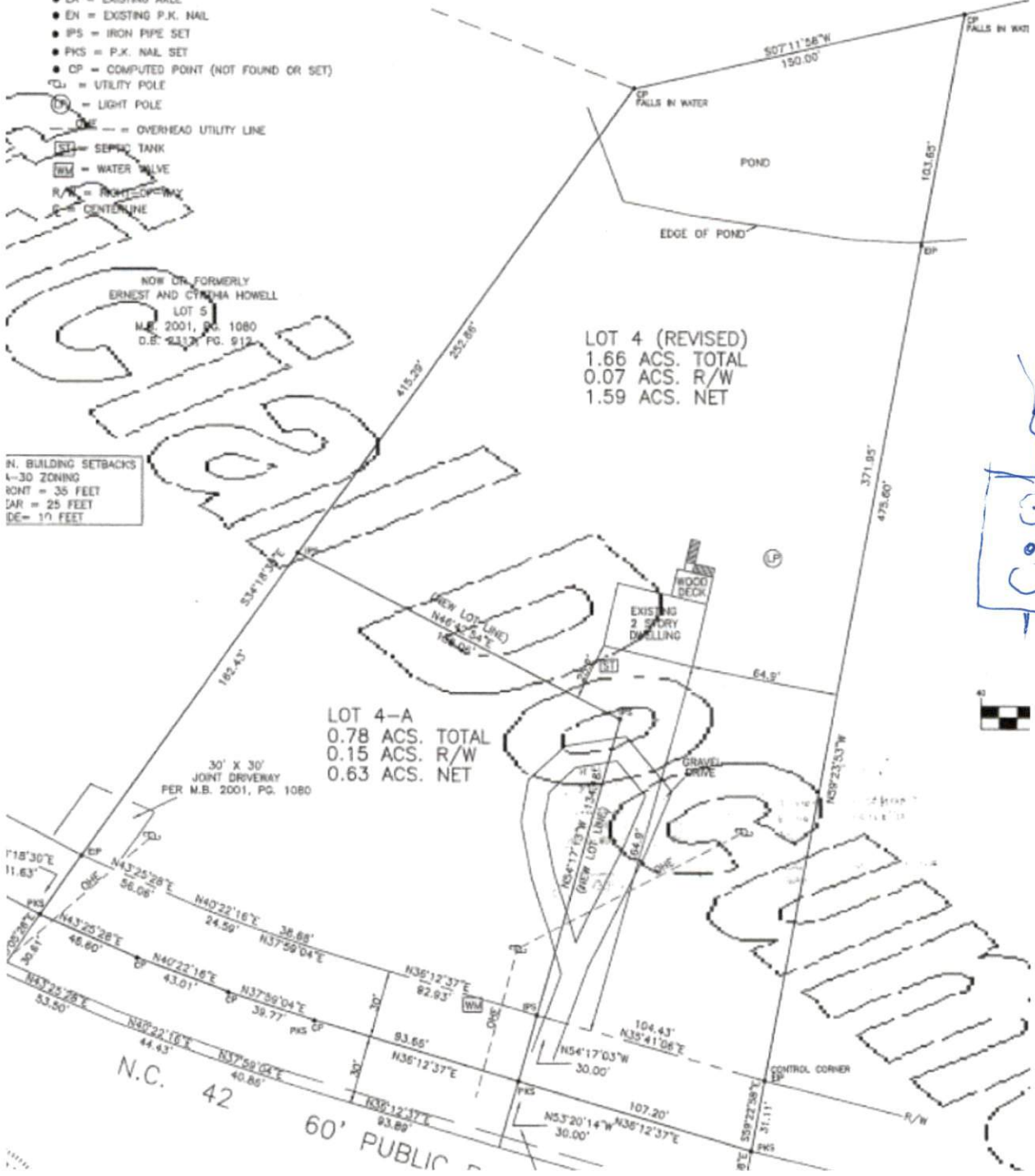
N. BUILDING SETBACKS
 1-30 ZONING
 FRONT = 35 FEET
 SIDE = 25 FEET
 REAR = 10 FEET

NOW OR FORMERLY
 ERNEST AND CYRILIA HOWELL
 LOT 5
 M.B. 2001, PG. 1080
 D.E. 9337 PG. 912

LOT 4 (REVISED)
 1.66 ACS. TOTAL
 0.07 ACS. R/W
 1.59 ACS. NET

LOT 4-A
 0.78 ACS. TOTAL
 0.15 ACS. R/W
 0.63 ACS. NET

30' X 30'
 JOINT DRIVEWAY
 PER M.B. 2001, PG. 1080



N.C. 42

60' PUBLIC