

NOTE:  
 ALL WINDOW(S) & WALK DOORS,  
 PER OWNER/ CONTRACTOR &  
 FIELD LOCATED

24' Wide Enclosed w/ Lean-To  
 As Provided By  
**A Plus Carports**  
 336-755-3113  
 PO Box 1550  
 Pilot Mountain, NC 7041

**ACE Solutions, Inc.**  
 Bus. Lic. No. C-3421  
 Kevin R. Adams, P.E.  
 Phone: 336-993-5114  
 950 Graves Street, Suite C  
 Kernersville, NC 27284

Project:  
**Jordan Harris**  
**7975 Hwy 42**  
**Holly Springs, NC**

Date: **8/14/2020**  
 Scale: **As Noted**  
 Drawn By: **MPH**  
 Checked By: **KRA**

Sheet Title:  
**Plan**  
 Sheet No.:  
**1 of 5**

**FP FLOOR/FOUNDATION PLAN**  
 1 NO SCALE



## GENERAL NOTES

- The 28-day compressive strength of all concrete work is 3,000 psi
- Minimum soil bearing shall be 2,000 psf
- All construction shall be provided in accordance with the 2018 North Carolina Residential Code, and all applicable local requirements.
- Basic Wind Speed 3-second Gust = 105 MPH (RISK CATEGORY I)
- Wind Factor = 0.6
- Building Type II-B
- All steel to be minimum of Grade 55.

### Design Loadings

Dead Load = 2 PSF

Live Load = 12 PSF; SPECIAL SCAFFOLDING REQUIRED AS A WORK SURFACE FOR WORKERS AND MATERIALS DURING ROOF MAINTENANCE AND REPAIR OPERATIONS (TO BE APPROVED BY CODE OFFICIAL)

Wind Load Forces = 105 MPH

Ground Snow Load = 15 PSF

These plans are in compliance with the 2018 NC Residential Code (with ASCE 7-10 wind load)

### Note on Roof Section

29GA corrugated steel. (sheeting to be continuous over three or more supports)

CHART OF MATERIAL	
MARK	SIZE
A	2.5"SQ. X 14GA. TUBING
B	4X4X1/4" ANGLE MIN. A36 STEEL
C	2.25"SQ. X 14GA. TUBING
D	#12X $\frac{3}{4}$ " SELF DRILLING TEK SCREW W/ NEOPRENE/ STEEL WASHER
E	12/14X7/8" TEK SCREW/LAP SCREW
F	14X1 1/4" TEK SCREW / LAP SCREW
G	29 GA METAL ROOF PANELS ( $\frac{3}{4}$ " rib)
H	20 GA. GALVANIZED TP15 TIE PLATE 1 13/16"X5" OR SIMPSON STRONG TIE A-21
J	2X2X3/16L 36KSI STEEL ANGLE
K	4X12 GA BAR
L	29 GA. METAL WALL PANELS ( $\frac{3}{4}$ " rib)
M	NESTED 2.5"X2.5"X14GA. TUBING

24' Wide Enclosed w/ Lean-To  
As Provided By

**A Plus Carpports**  
336-755-3113

PO Box 1550  
Pilot Mountain, NC 7041

**ACE Solutions, Inc.**

Bus. Lic. No. C-3421  
Kevin R. Adams, P.E.  
Phone: 336-993-5114  
950 Graves Street, Suite C  
Kernersville, NC 27284

Project:

Jordan Harris  
7975 Hwy 42  
Holly Springs, NC

Date:

8/14/2020

Scale:

As Noted

Drawn By:

MPH

Checked By:

KRA

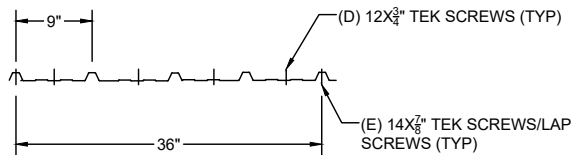


Sheet Title:

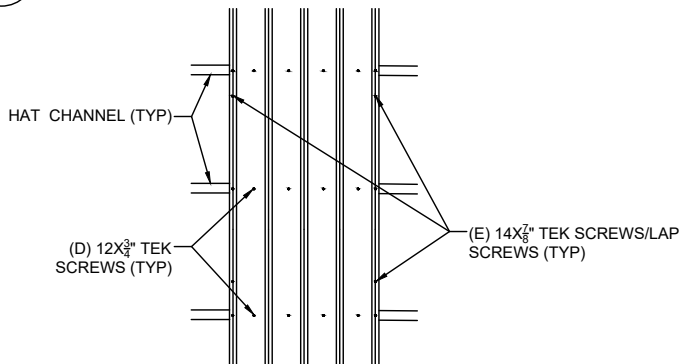
Notes and Details

Sheet No.:

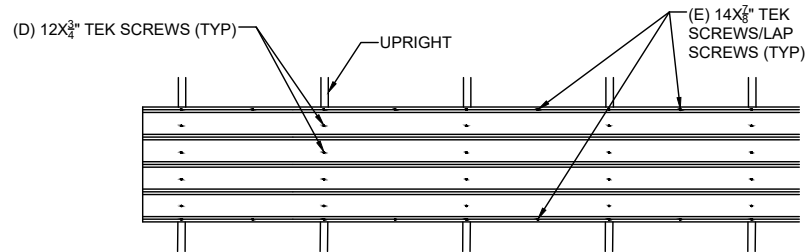
2 of 5



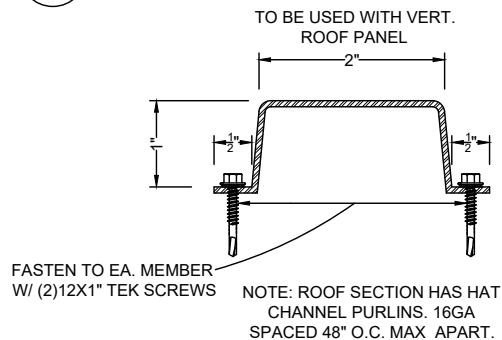
D1 SECTION - SCREW PATTERN  
2 NO SCALE



D3 ELEVATION - ROOF SCREW PATTERN  
2 NO SCALE

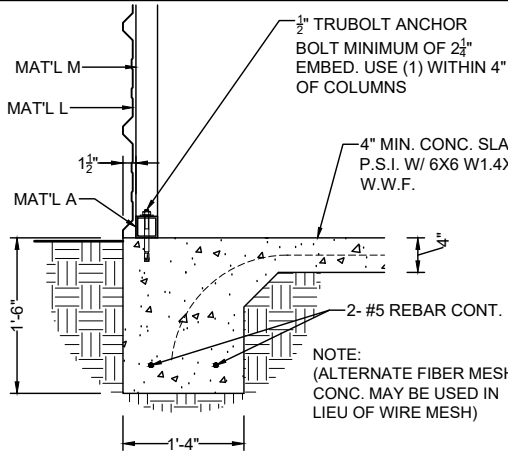


D2 ELEVATION - WALL SCREW PATTERN  
2 NO SCALE

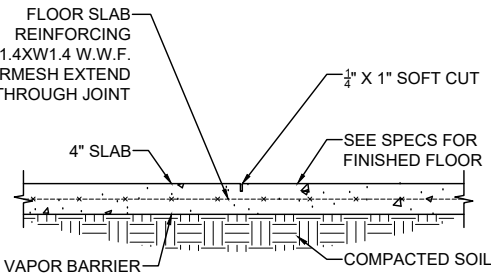


D4 TYPICAL HAT CHANNEL  
2 NO SCALE

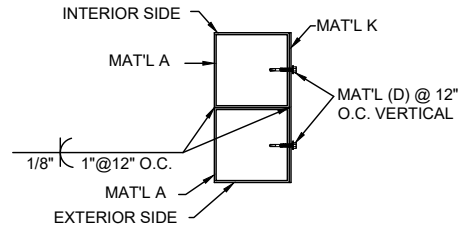




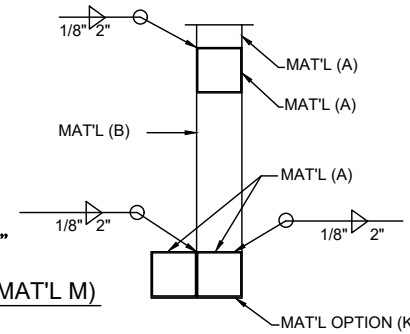
**D1 FOUNDATION DETAIL**  
3 NO SCALE



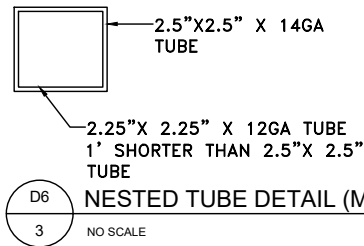
**D2 SAWED JOINT DETAIL**  
3 NO SCALE



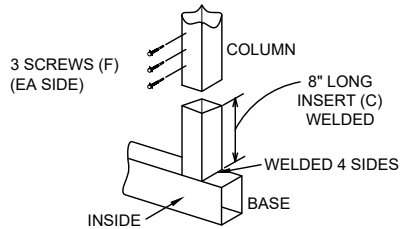
**D4 OPENING JAMB**  
3 NO SCALE



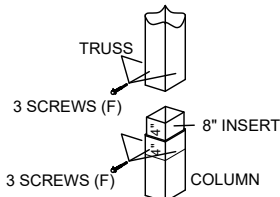
**D5 OPENING JAMB**  
3 NO SCALE



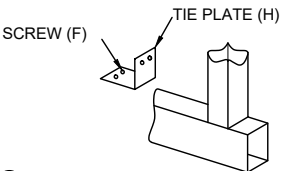
**D6 NESTED TUBE DETAIL (MAT'L M)**  
3 NO SCALE



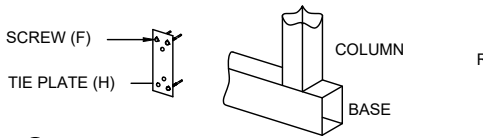
**1 TYPICAL COLUMN TO BASE SIDE CONNECTIONS**



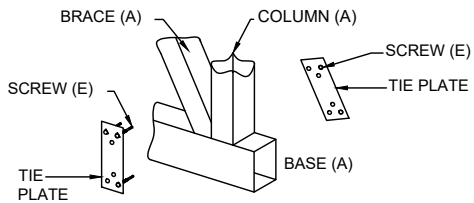
**2 TYPICAL TRUSS/POST CONNECTIONS**



**3 90 DEGREE CONNECTIONS**

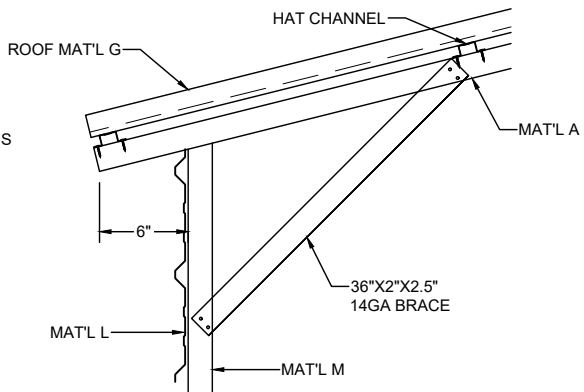


**4 TYPICAL REAR WALL COLUMN TO BASE CONNECTIONS**



**5 TRUSS/ WIND BRACE CONNECTION**

**D3 CONNECTION DETAILS**  
3 NO SCALE



**D6 KNEE BRACE**  
3 NO SCALE

24' Wide Enclosed w/ Lean-To  
As Provided By  
**A Plus Carports**  
336-755-3113

PO Box 1550  
Pilot Mountain, NC 7041

**ACE Solutions, Inc.**  
Bus. Lic. No. C-3421  
Kevin R. Adams, P.E.  
Phone: 336-993-5114  
950 Graves Street, Suite C  
Kernersville, NC 27284

Project:  
**Jordan Harris**  
7975 Hwy 42  
Holly Springs, NC

Date:  
8/14/2020

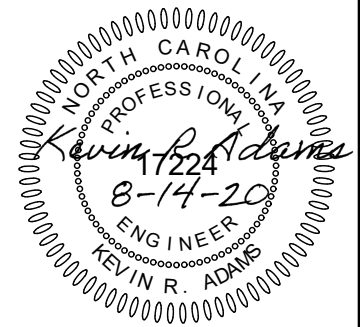
Scale:  
As Noted

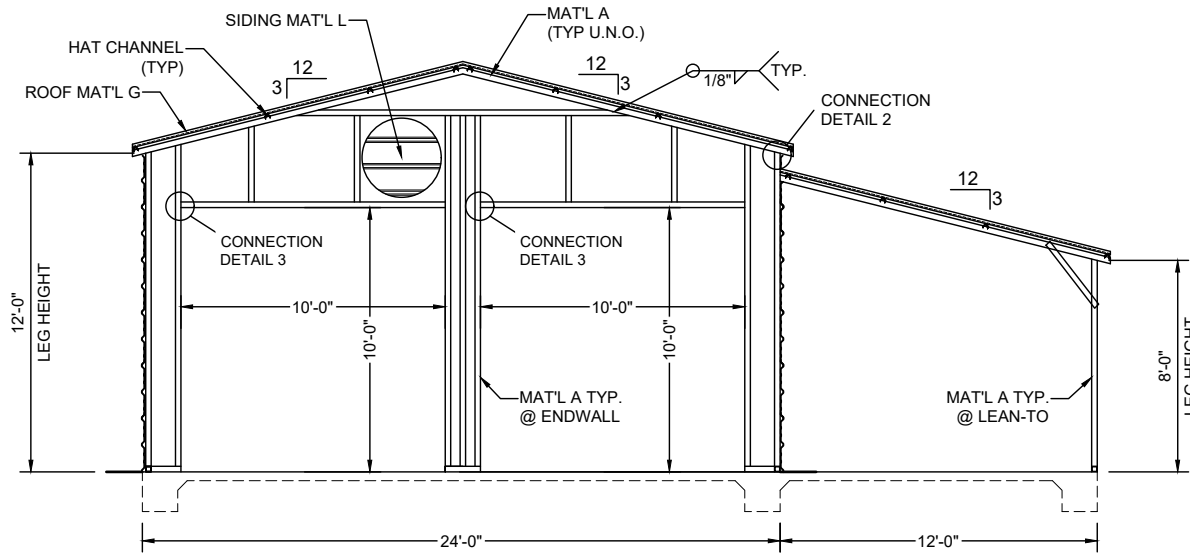
Drawn By:  
MPH

Checked By:  
KRA

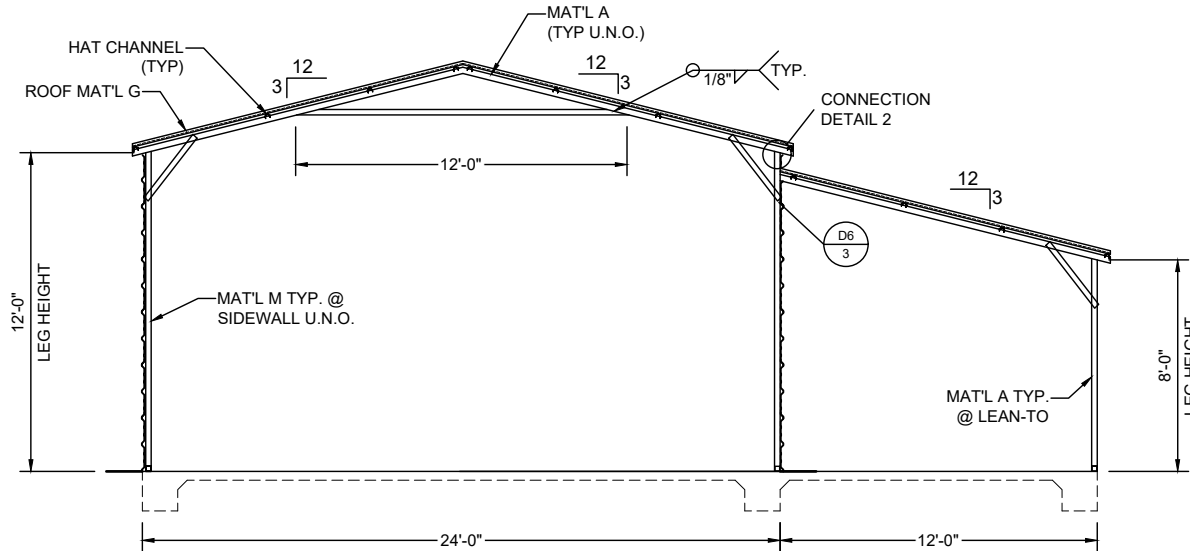
Sheet Title:  
Details

Sheet No.:  
3 of 5





FE 4 ENDWALL FRAMING ELEVATION  
NO SCALE



IE 4 INTERIOR ELEVATION  
NO SCALE

24' Wide Enclosed w/ Lean-To  
As Provided By  
**A Plus Carports**  
336-755-3113

PO Box 1550  
Pilot Mountain, NC 7041

**ACE Solutions, Inc.**

Bus. Lic. No. C-3421  
Kevin R. Adams, P.E.  
Phone: 336-993-5114  
950 Graves Street, Suite C  
Kernersville, NC 27284

Project:  
**Jordan Harris**  
7975 Hwy 42  
Holly Springs, NC

Date:  
8/14/2020

Scale:  
As Noted

Drawn By:  
MPH

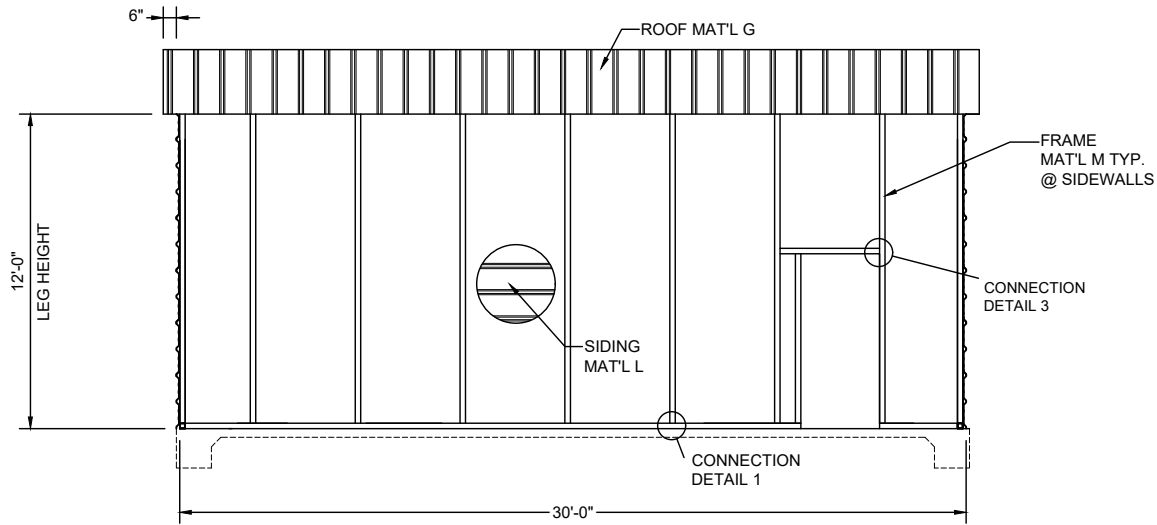
Checked By:  
KRA



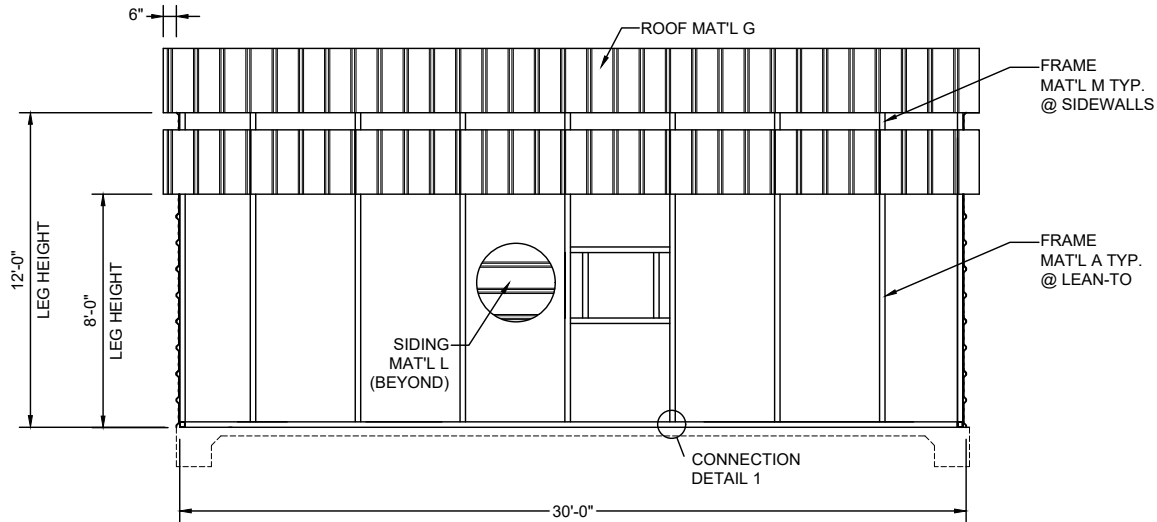
Sheet Title:  
Framing Elevations

Sheet No.:  
4 of 5





SE1 SIDEWALL FRAMING ELEVATION  
5 NO SCALE



SE2 SIDEWALL FRAMING ELEVATION  
5 NO SCALE

24' Wide Enclosed w/ Lean-To  
As Provided By  
**A Plus Carports**  
336-755-3113

PO Box 1550  
Pilot Mountain, NC 7041

**ACE Solutions, Inc.**

Bus. Lic. No. C-3421  
Kevin R. Adams, P.E.  
Phone: 336-993-5114  
950 Graves Street, Suite C  
Kernersville, NC 27284

Project:  
Jordan Harris  
7975 Hwy 42  
Holly Springs, NC

Date:  
8/14/2020

Scale:  
As Noted

Drawn By:  
MPH

Checked By:  
KRA



Sheet Title:  
Framing Elevations

Sheet No.:  
5 of 5

