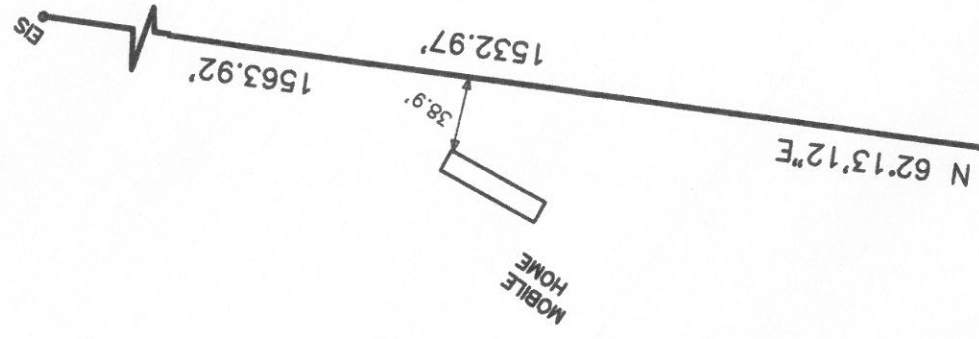
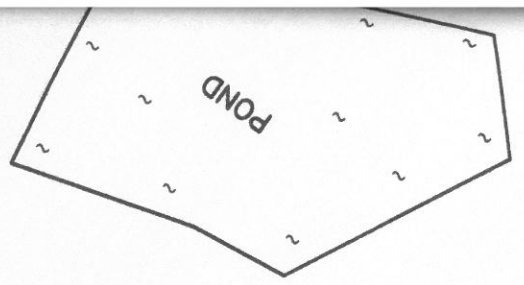
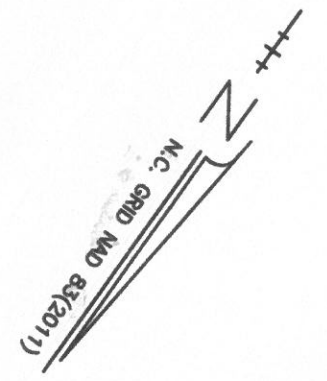
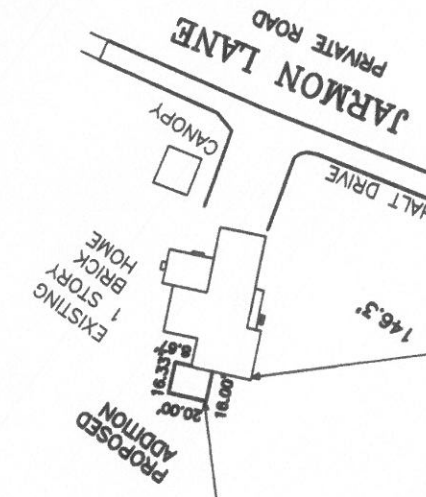


HARNETT COUNTY JUR
PROPERTY IS ZONED
MINIMUM BUILDING SETB
FRONT - 10'
SIDE - 35'
REAR - 25'
CORNER SIDE - 20'



PERCY L. JARMON
D.B. 1227 PG. 19-21
41.7 ACRES +/- - REMAINING

KATHRYN &
CHRISTOPHER
CARSON
MAP # 2016-283
D.B. 1743 PG. 880



JARMON LANE
PRIVATE ROAD

COTTON ROAD
NCSR # 1428
60' PUBLIC R/W

874.20' N 47°46'08"E
THE LINE

209.6'

THE LINE TO NCDOT
R/W DISK
N 52°22'04"E
22.95'

175.46' N 42°20'22"W

53°27'34"W
2732.23'
THE LINE TO THE
INTERSECTION OF HARDEE
RD. & COTTON RD.

363.47' N 43°34'21"W

146.3'

ASPHALT DRIVE

UP
GUY

30.95' ERS

46.56' EPK N 42°38'43"W

56.42' EPK

143.58' EPK N 41°47'03"W

30.95' EPK

209.05' ERS

S 62°13'12"W

240.00' BS

N 42°38'43"W
46.56'



NCL: OBSERVATIONS

PG. 19
PG. 22
03-321
-21
SHOWN