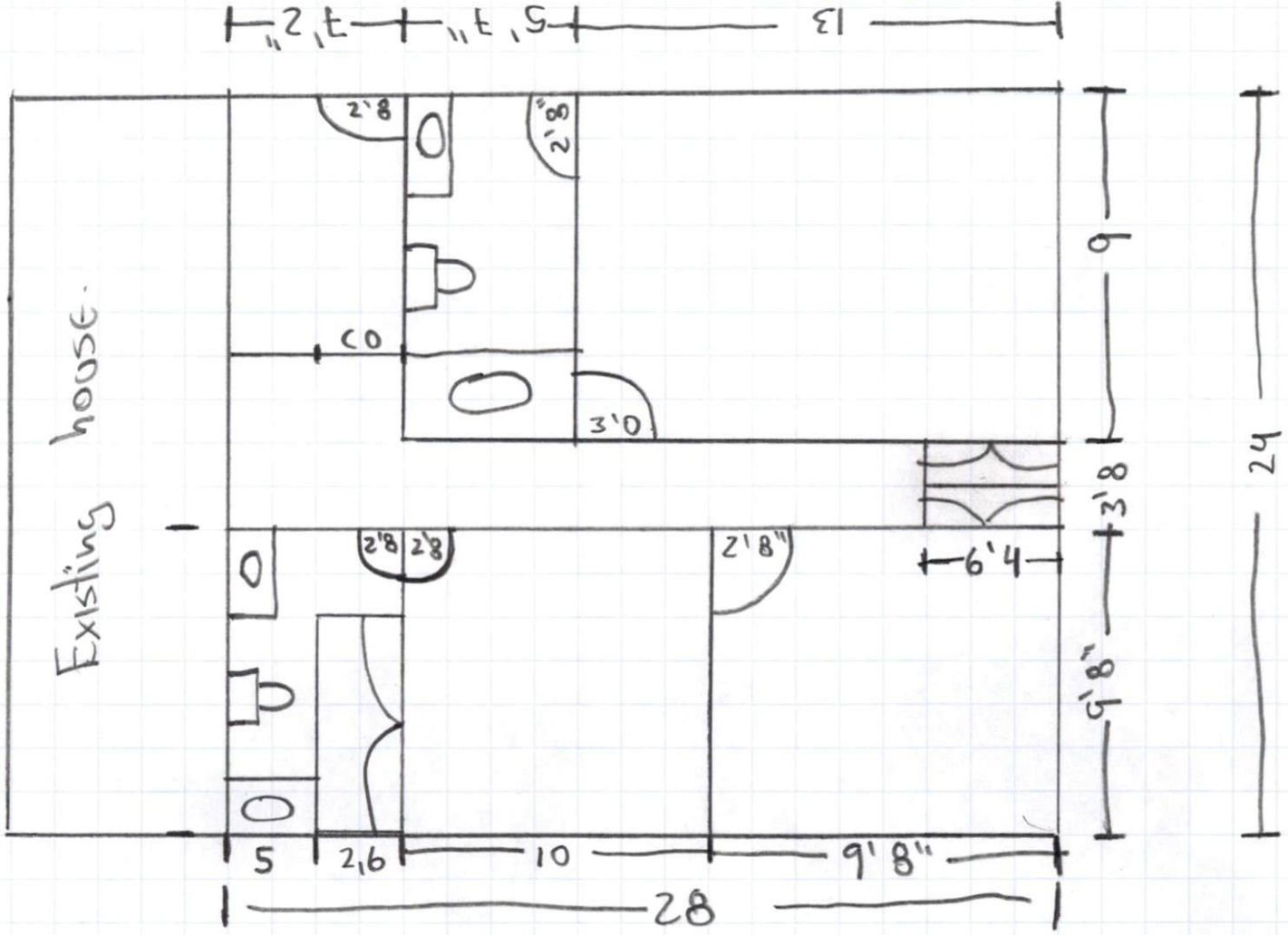


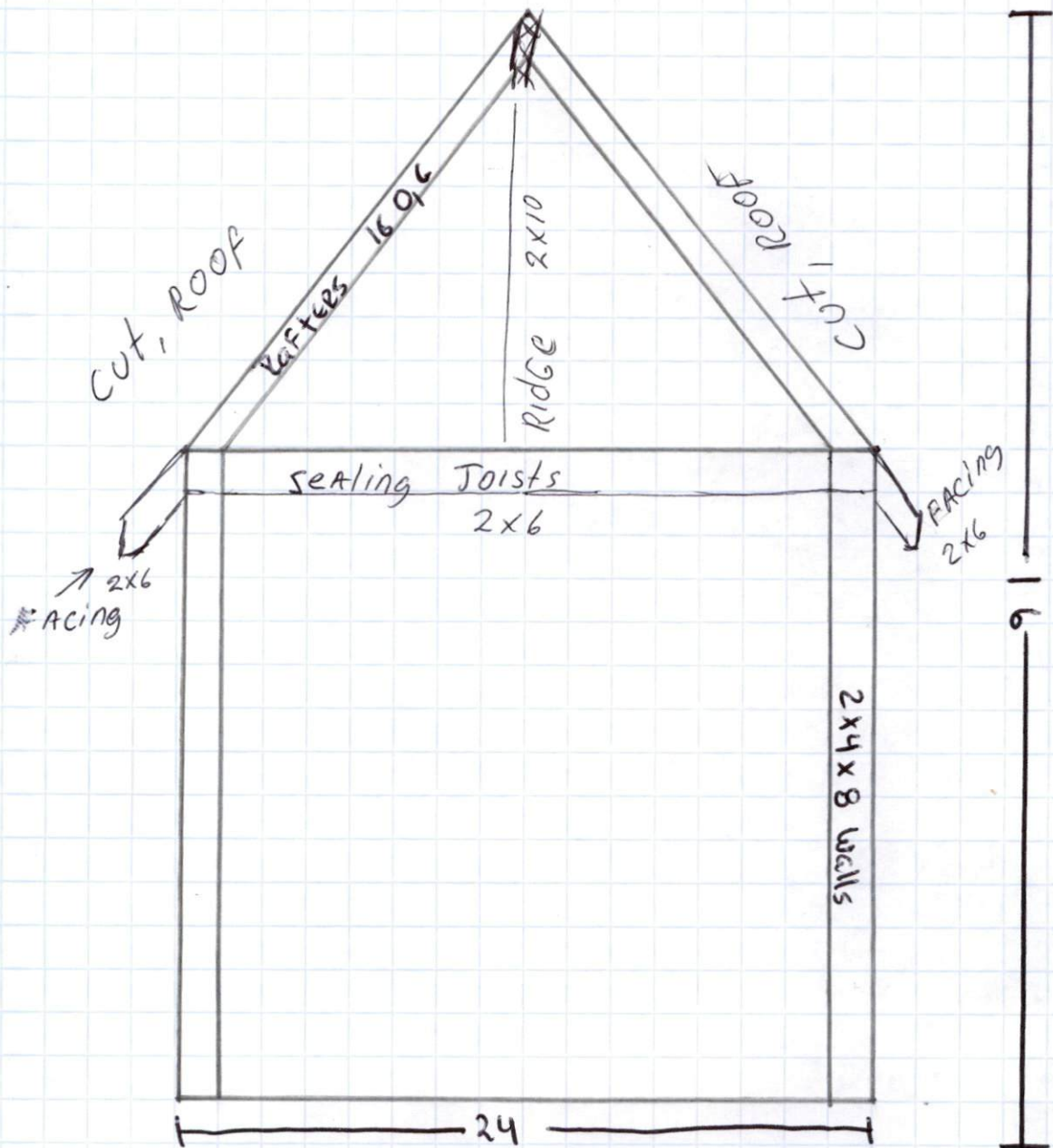
### \* Notes

ALL foundation will be build with 8x16x8 blocks  
Height as needed to match existing foundations

### \* Footers

8x16 Footing with 3500psi Concrete.\*  
Inches Inches.





### Notes

- ALL Roof Rafters 16 O.C 2x8
- ALL Wall 2x4 16 O.C 2x4x8

### Insulation

- R-15 in Walls
- R-38 Ceiling