

SITE PLAN APPROVAL

DISTRICT RAWLS USE 20x40 deck

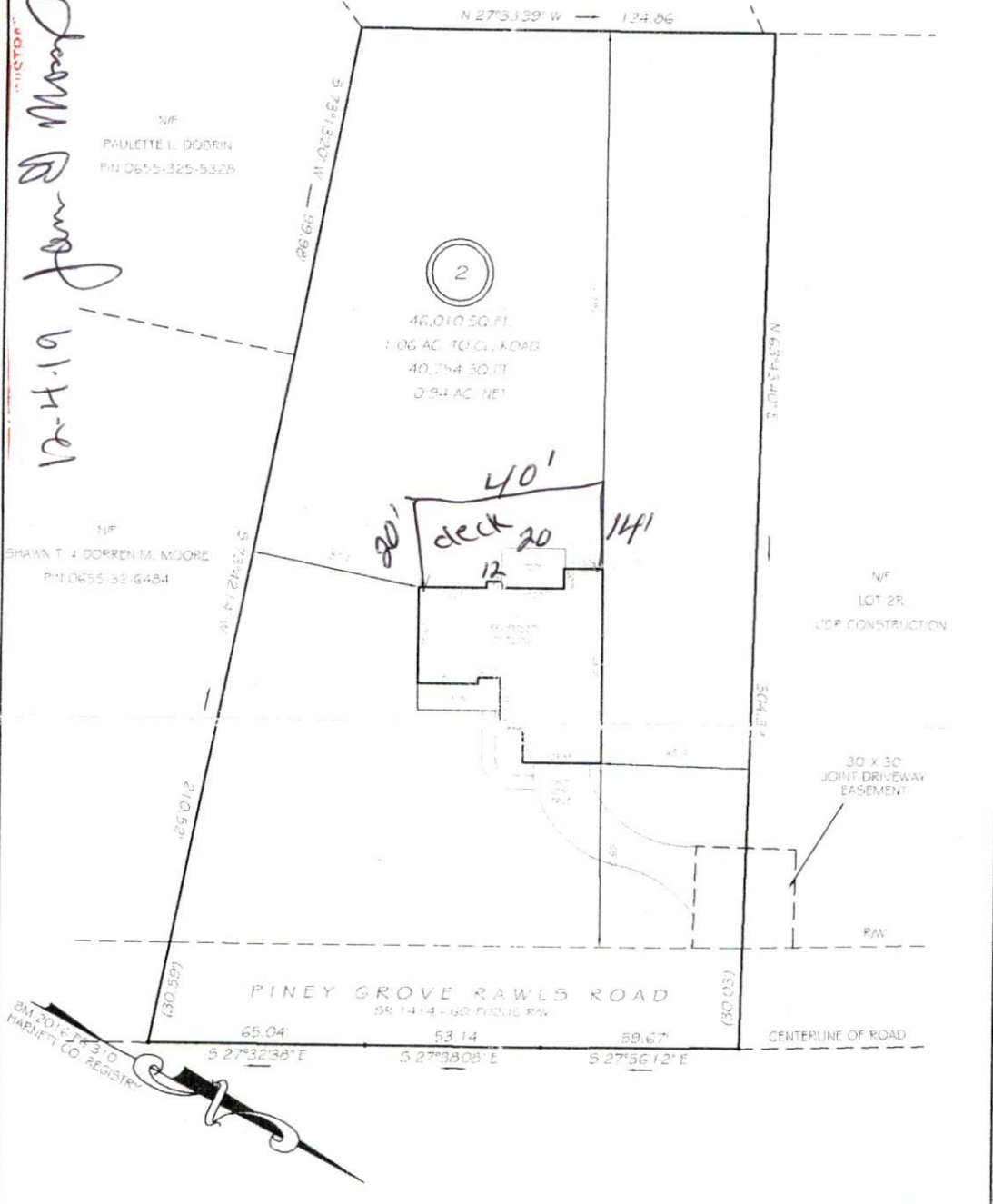
2 BEDROOM

12-4-19 Jan R Moore

I, MICHAEL P. GRIFFIN, certify that under my direction and supervision this map was drawn from an actual field survey; that the error of closure of the survey as calculated by coordinates is 1: 10,000+; that the area shown hereon was calculated by coordinates. Witness my hand and seal this day of MONTH 2016.

NMF HOPE A. BAGWELL PIN 0655-32-3493

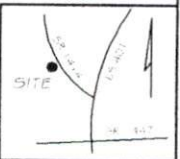
NIF ALEXANDER WILLIAMS PIN 0655-32-3511



REVISION: FORWARD 15 11/2012

PRELIMINARY
NOT FOR RECORDATION,
SALES OR CONVEYANCE

LEGEND			
PIP	EXISTING IRON PIPE	FES	FLARED END SECTION
IPS	IRON PIPE SET	WM	WATER METER
RW	RIGHT OF WAY	CO	CLEAN OUT
NIF	NEW OR FORMERLY	PH	FIRE HYDRANT
EIS	EXISTING IRON STAKE	CB	CATCH BASIN



GLS GRIFFIN LAND SURVEYING, INC.
P.O. BOX 148
FUQUAY-VARINA, NC 27526
(919) - 567 - 1963

PLOT PLAN
FOR
CDR CONSTRUCTION
O.D. SHERMAN LANDS
LOT 2
PINEY GROVE RAWLS ROAD
NORTH CAROLINA
HARNETT CO. HECTOR'S CREEK TWSHP

DRAWN BY NMF	DATE 10/4/16
CHECKED BY MPG	SCALE 1" = 40'