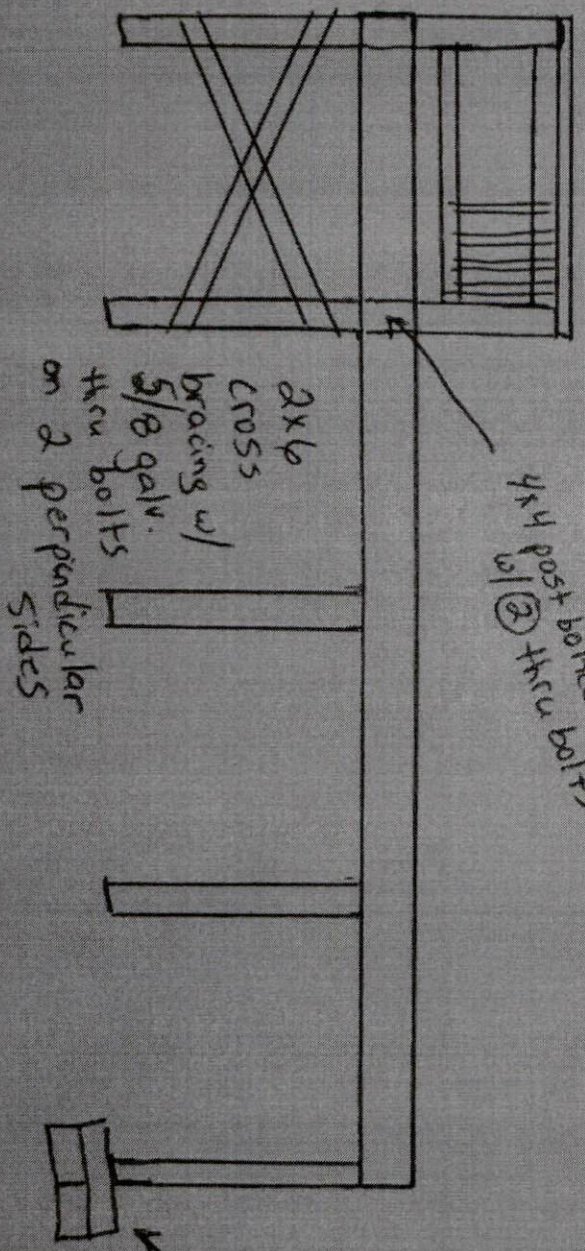


Scale - 1/4" = 1'0"

12 x 24 deck

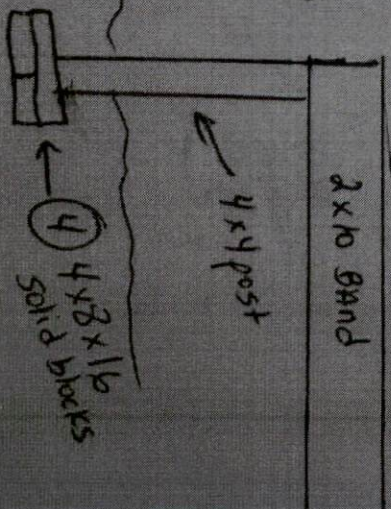
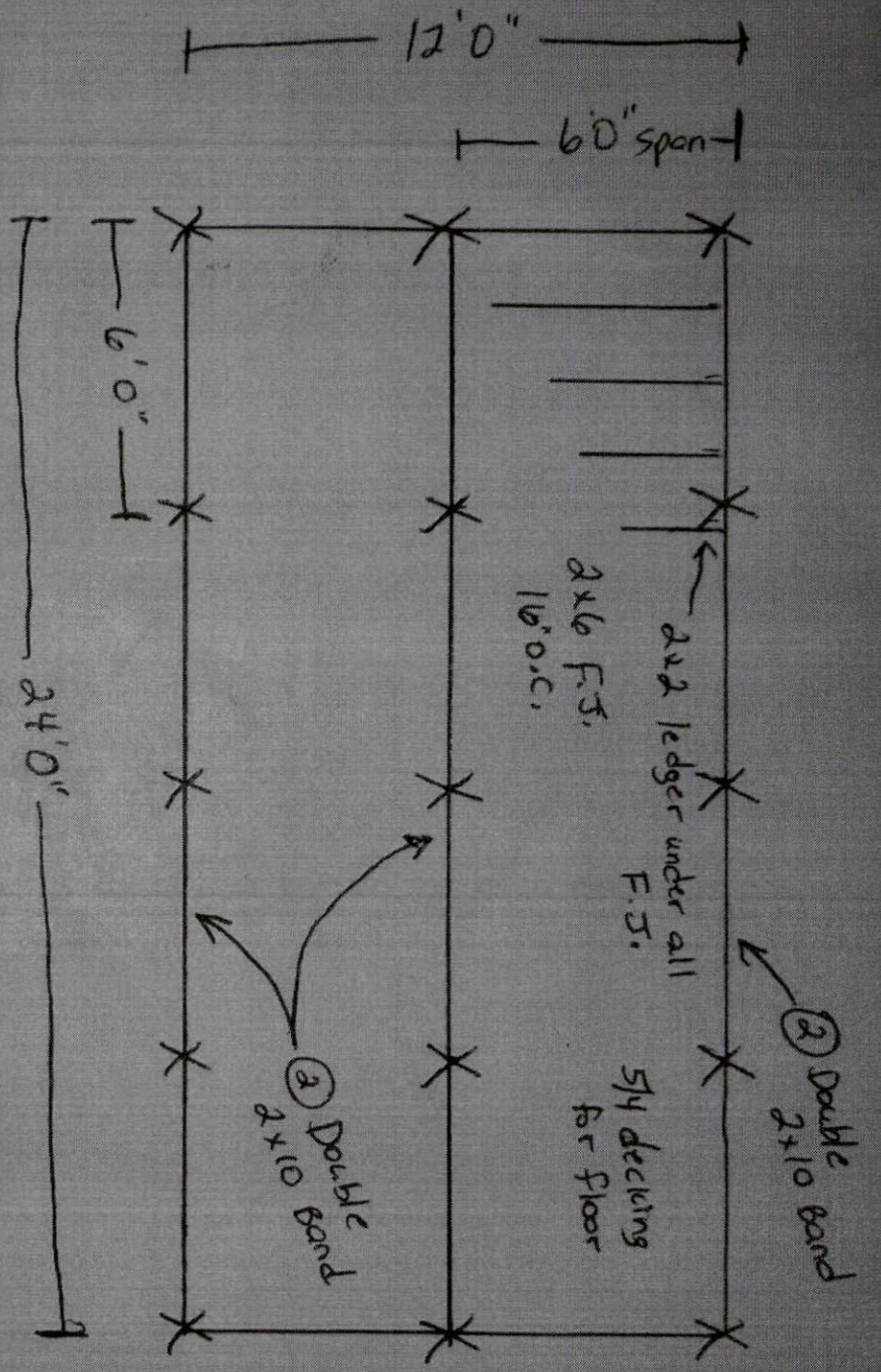


2x4 railing & 2x2 pickets
w/ min height of 36"
and max spacing of 4"

4x4 post bolted
w/ thru bolts

2x6
cross
bracing w/
5/8 galv.
thru bolts
on 2 perpendicular
sides

All support post
connections
have per
page 1



Scale -
1/4" = 1'0"

12' x 24' deck

Page
1 of 2