

**SITE PLAN APPROVAL**

DISTRICT RA20 USE 116x80  
#BEDROOMS 3 Swmh

10-2-19 K.A.B.  
ZONING ADMINISTRATOR

*Operator*

10-2-2019

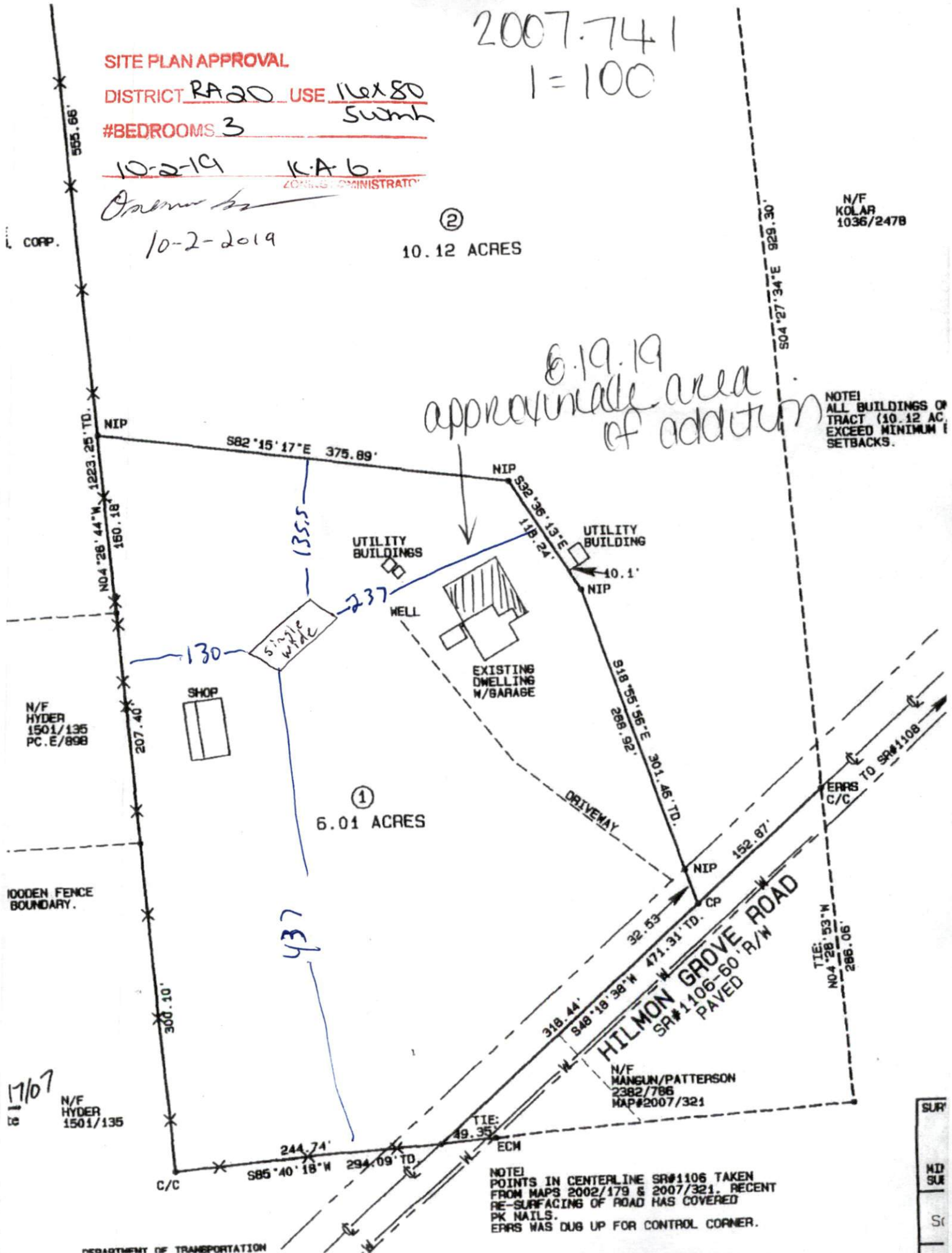
②  
10.12 ACRES

2007.741  
1=100

N/F  
KOLAR  
1036/247B

6.19.19  
approximate area  
of addition

NOTE!  
ALL BUILDINGS ON  
TRACT (10.12 AC,  
EXCEED MINIMUM 1  
SETBACKS.



NOTE!  
POINTS IN CENTERLINE SR#1106 TAKEN  
FROM MAPS 2002/179 & 2007/321. RECENT  
RE-SURFACING OF ROAD HAS COVERED  
PK NAILS.  
ERRS WAS DUG UP FOR CONTROL CORNER.

SUR
MD
SUR
Sc