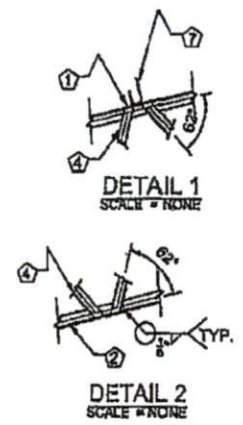


UP TO 40' TRUSS ELEVATION  
SCALE 3/16" = 1'

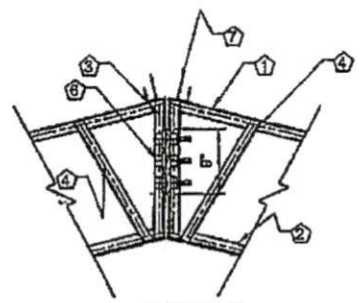


**DESIGN CRITERIA**

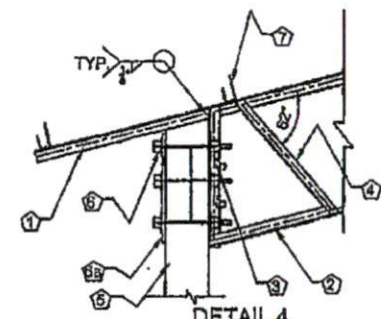
1. WIND LOAD	V <sub>ult</sub>	= 150 MPH
2. LIVE LOAD		= 15 PSF
3. DEAD LOAD		= 10 PSF
4. SNOW LOAD	W <sub>snow</sub>	= 10 - 20 PSF
5. CONCRETE	FC	= 3500 PSI

**NOTES:**  
MAXIMUM TRUSS SPACING SHALL BE 10 FT.

FRAMING	
①	L 11/2X11/2X3/16"
②	L 11/2X11/2X3/16"
③	L 11/2X11/2X3/16"
④	L 11/4X11/4X1/8"
⑤	6X3 P.T. WOOD POST
⑥	3- 5/8" A325
⑥a	18X3X3/8" PLAT
⑦	BRACKET



DETAIL 3  
SCALE = NONE



DETAIL 4  
SCALE = NONE

**GENERAL NOTES**

- A. STRUCTURAL STEEL DESIGN, FABRICATION AND ERECTION SHALL BE IN ACCORDANCE WITH AISC "SPECIFICATION FOR THE DESIGN, FABRICATION AND ERECTION OF STRUCTURAL STEEL FOR BUILDINGS," NINTH EDITION.
- B. HIGH STRENGTH BOLTING SHALL BE IN ACCORDANCE WITH AISC "SPECIFICATION \* FOR STRUCTURAL JOINTS USING ASTM A325 OR A490 BOLTS" (LATEST EDITION).
- C. ALL STRUCTURAL STEEL SHALL HAVE THE FOLLOWING MINIMUM YIELD STRENGTHS, SHALL BE HOT DIP GALVANIZED PER PER SABS 934 AT GROUND FLOOR, UNLESS OTHERWISE NOTED ON THE DRAWINGS.
 

STRUCTURAL TUBING	F <sub>y</sub> = 48KSI
ALL OTHER	F <sub>y</sub> = 36KSI
- D. WELDING SHALL BE IN ACCORDANCE WITH AMERICAN WELDING SOCIETY SPECIFICATION AWS A5.1 (1996).
- E. WELDING ELECTRODES USED FOR SHOP OR FIELD CONNECTIONS SHALL HAVE A MINIMUM ELECTRODE TENSILE STRENGTH OF 70 KSI. UNLESS NOTED OTHERWISE ON THE DRAWINGS, ELECTRODES SHALL CONFORM TO AWS A6.

R1. CHANGED WIND SPEED TO 150 MPH

KIFAYAT U. KHAN, PE  
N.C. REG. # 047046  
PROFESSIONAL SEAL  
047046  
KIFAYAT U. KHAN  
2019

S.E.C.M. CORP. 6732 CEDAR RIDGE CIR. SULTON, N.C. 28770 PH: 850-613-2732 FAX: 850-663-2343 EMAIL: KRATD@SECMCORP.COM	
PROJECT NAME:	S&H
LOCATION:	GREENTON
COUNTY:	ROE ANBLI
DATE:	11/14/2019
SCALE:	AS SHOWN
DRAWN:	E.K.
REVISION:	1
CHECKED:	KX
APPROVED:	0
COVER SHEET	SHEET 1 OF 1