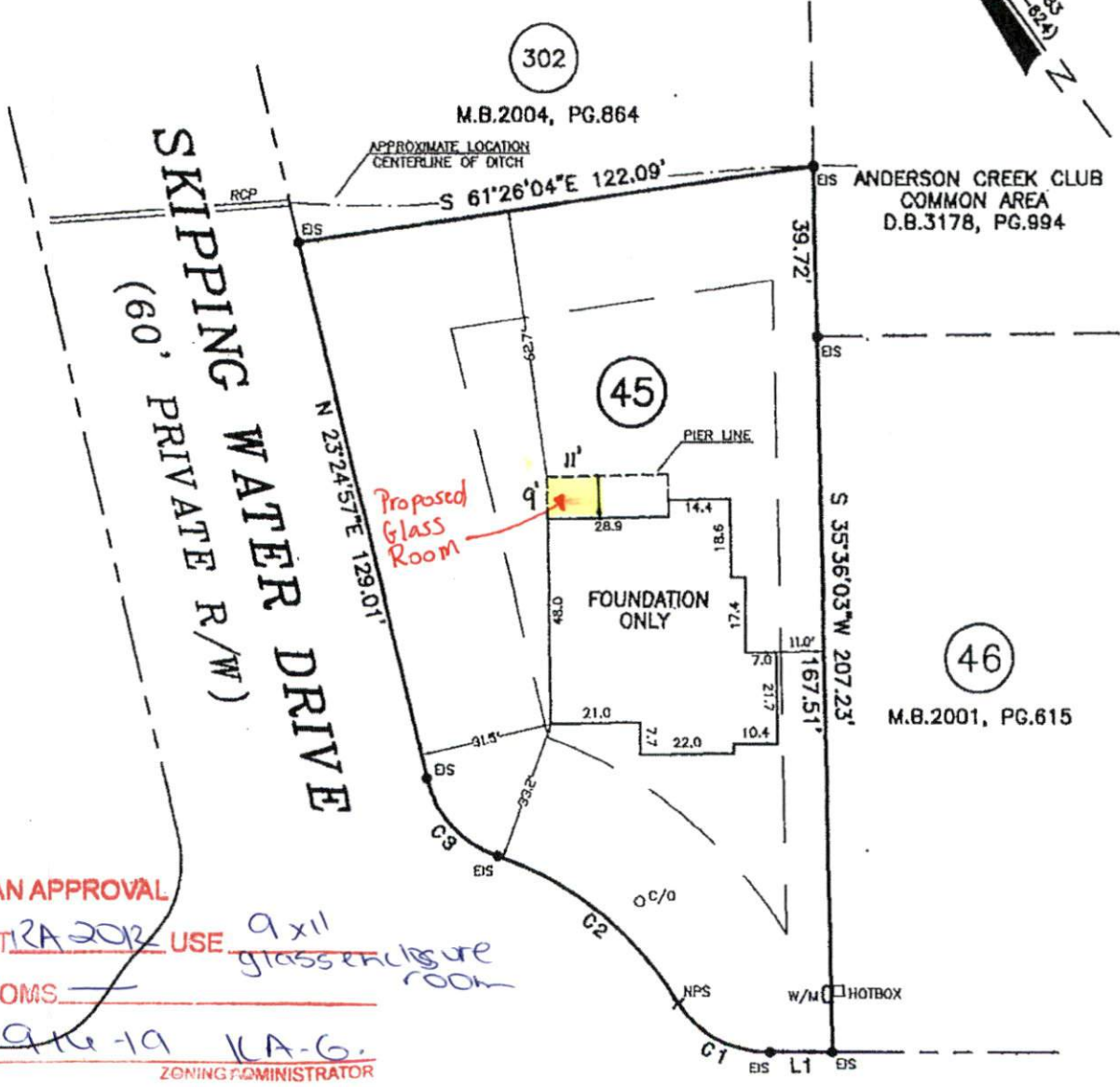


- LEGEND**
- NTS NOT TO SCALE
 - BP EXISTING IRON PIPE
 - PP POWER POLE
 - W/M WATER METER
 - TB TELEPHONE BOX
 - IPS IRON PIPE SET
 - CP&L TRANSFORMER
 - CATV CABLE TV BOX
 - L POLE LIGHT POLE
 - OHPL OVERHEAD POWER LINE
 - F.E.S. FLARED END SECTION (PIPE)
 - RCP REINFORCED CONC. PIPE
 - B.O.C. BACK OF CURB
 - F.H. FIRE HYDRANT
 - C/O SEWER CLEAN OUT
 - ES EXISTING IRON STAKE
 - M.H. MANHOLE
 - ECM EXISTING CONCRETE MONUMENT
 - NPS NO POINT SET

Course	Bearing	Distance
L1	N 63°42'54" W	14.40'

Curve	Radius	Length	Chord	Chord Bear.
C1	25.00'	25.48'	24.97'	N 24°32'55" W
C2	80.00'	58.10'	64.96'	N 14°12'29" W
C3	25.00'	25.60'	24.67'	N 06°09'13" W

N.C. GRID NORTH: NAD 83
 (REF. M.B.2001 PG.611-624)



STE PLAN APPROVAL
 DISTRICT: 2A 2012 USE: 9x11 glass enclosure room
 #BEDROOMS: 1
 ZONING: KA-6
 ZONING ADMINISTRATOR

SHINING WATER LANE
 (60' PRIVATE R/W)

NOTE: SHOWN IS LOT 45 OF
 ANDERSON CREEK CLUB S/D.
 REF: B.O.M.2001, PG.611-621

AREA = 0.419 ACRES
 46 SHINING WATER LANE

