

782.65'

(2)

1450.44'

2.24 AC Total

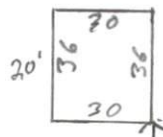
123.45'

SITE PLAN APPROVAL

DISTRICT RA30 USE 30x36

#BEDROOMS — garage

9-11-19 K.A.G.
ZONING STRATOR



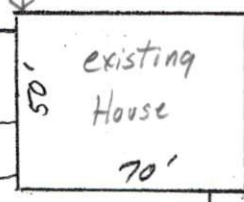
Repair Area
25% Reduction

Septic Area

(1)

351.69'

50'



80'

Drive

150'

156.24'

0'

123.70'

1.84'