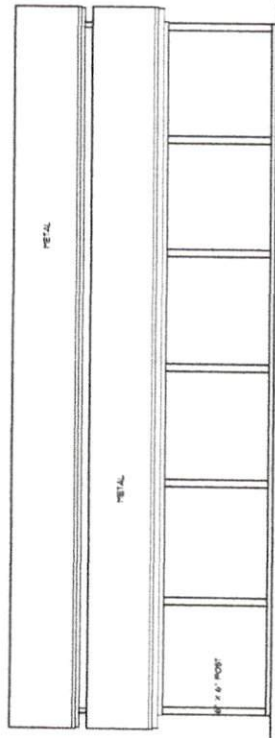
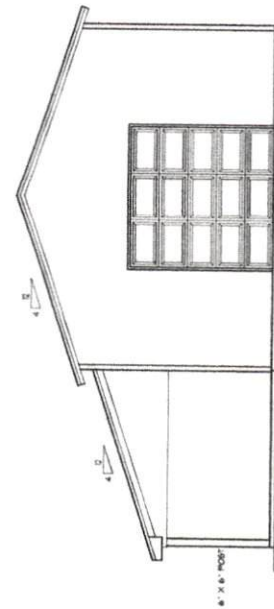


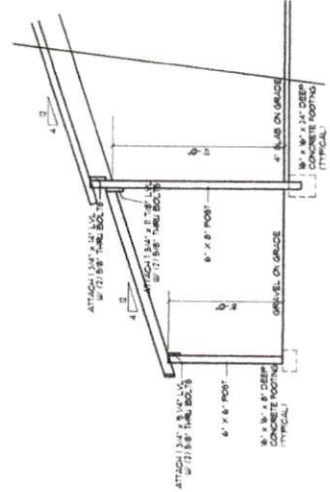
BUILDER SHALL VERIFY ALL DIMENSIONS AND CONDITIONS
 AT THE OF CONSTRUCTION.
 ALL CONSTRUCTION SHALL CONFORM TO THE 2018
 EDITION OF THE NC STATE BUILDING CODE
 CODES GOVERN OVER DRAWINGS.
 DIMENSIONS GOVERN OVER SCALE.
 VERIFY ALL MECHANICAL REQUIREMENTS BEFORE
 STARTING.
 VINCANNON DESIGNS DOES NOT ASSUME LIABILITY
 FOR ANY DELAY OR FOR CONSTRUCTION METHODS
 OF THESE PLANS.



SIDE ELEVATION
SCALE: 1/4" = 1'-0"



FRONT ELEVATION
SCALE: 1/4" = 1'-0"



CROSS SECTION
SCALE: 1/4" = 1'-0"

00 04 2019
 STRUCTURAL DIVISION BY:
 HOWERTON SERVICES, PLLC
 3513 CATHEDRAL BELL ROAD RALEIGH, NC 27614
 LICENSE P-1716

- DRAWER'S SEAL APPLIES ONLY TO ORIGINAL COMPANIES OR THIS PROJECT. ANY REVISIONS TO THESE DRAWINGS SHALL BE MADE BY THE ORIGINAL COMPANY OR BY THE ORIGINAL SEALING COMPANY.
- ANY CHANGES OR MODIFICATIONS TO THESE DRAWINGS SHALL BE MADE BY THE ORIGINAL COMPANY OR BY THE ORIGINAL SEALING COMPANY.
- ANY CHANGES OR MODIFICATIONS TO THESE DRAWINGS SHALL BE MADE BY THE ORIGINAL COMPANY OR BY THE ORIGINAL SEALING COMPANY.
- DO NOT SCALE THESE DRAWINGS - DIMENSIONS APPROVAL DATES



J. Howerton
 J. Howerton
 J. Howerton

VINCANNON DESIGNS
 CUSTOM HOME PLANS
 1000 W. HARRIS ROAD
 HARRISVILLE, NC 27531

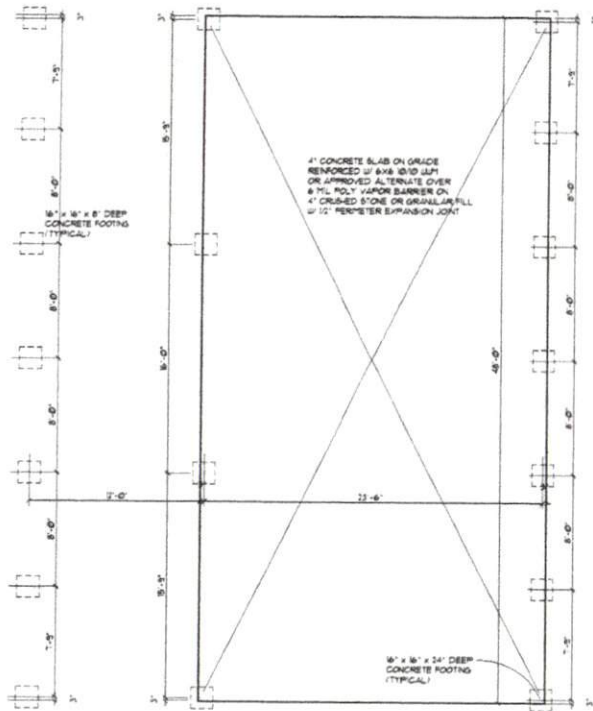
Allen/Amor Homecourt
 Lafayette Road
 Harnett County NC

BUILDER SHALL VERIFY ALL DIMENSIONS AND CONDITIONS AT TIME OF CONSTRUCTION.

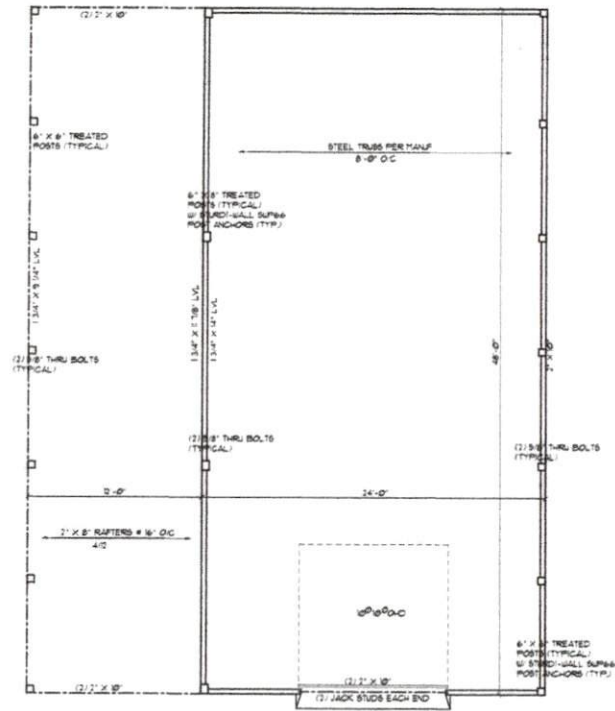
ALL CONSTRUCTION SHALL CONFORM TO THE 2018 EDITION OF THE NC STATE BUILDING CODE. CODES GOVERN OVER DRAWINGS. DIMENSIONS GOVERN OVER SCALE.

VERIFY ALL MECHANICAL REQUIREMENTS BEFORE FRAMING.

VINCANNON DESIGN DOES NOT ASSUME LIABILITY FOR ANY DEVIATION OF OR CONSTRUCTION METHODS OF THESE PLANS.



FOUNDATION PLAN
SCALE: 1/4" = 1'-0"



FLOOR PLAN
SCALE: 1/4" = 1'-0"

STRUCTURAL EVALUATION BY:

HOWERTON SERVICES, PLLC
3513 CATHEDRAL BELL ROAD RALEIGH, NC 27614
LICENSE P-1716

- ENGINEER'S SEAL APPLIES ONLY TO STRUCTURAL COMPONENTS ON THIS DOCUMENT. SEAL DOES NOT INCLUDE CONSTRUCTION REVIEW, MEANS, METHODS, TECHNIQUES, SEQUENCES, PROCEDURES OR SAFETY PRECAUTIONS.
- ANY DENIERS OR DISCREPANCIES ON PLANS ARE TO BE BROUGHT TO IMMEDIATE ATTENTION OF THE ENGINEER. FAILURE TO DO SO WILL VOID ENGINEER'S LIABILITY.
- DO NOT SCALE THESE DRAWINGS - ENGINEERING APPROVAL EXPRES 06/01/2020

06/04/2019

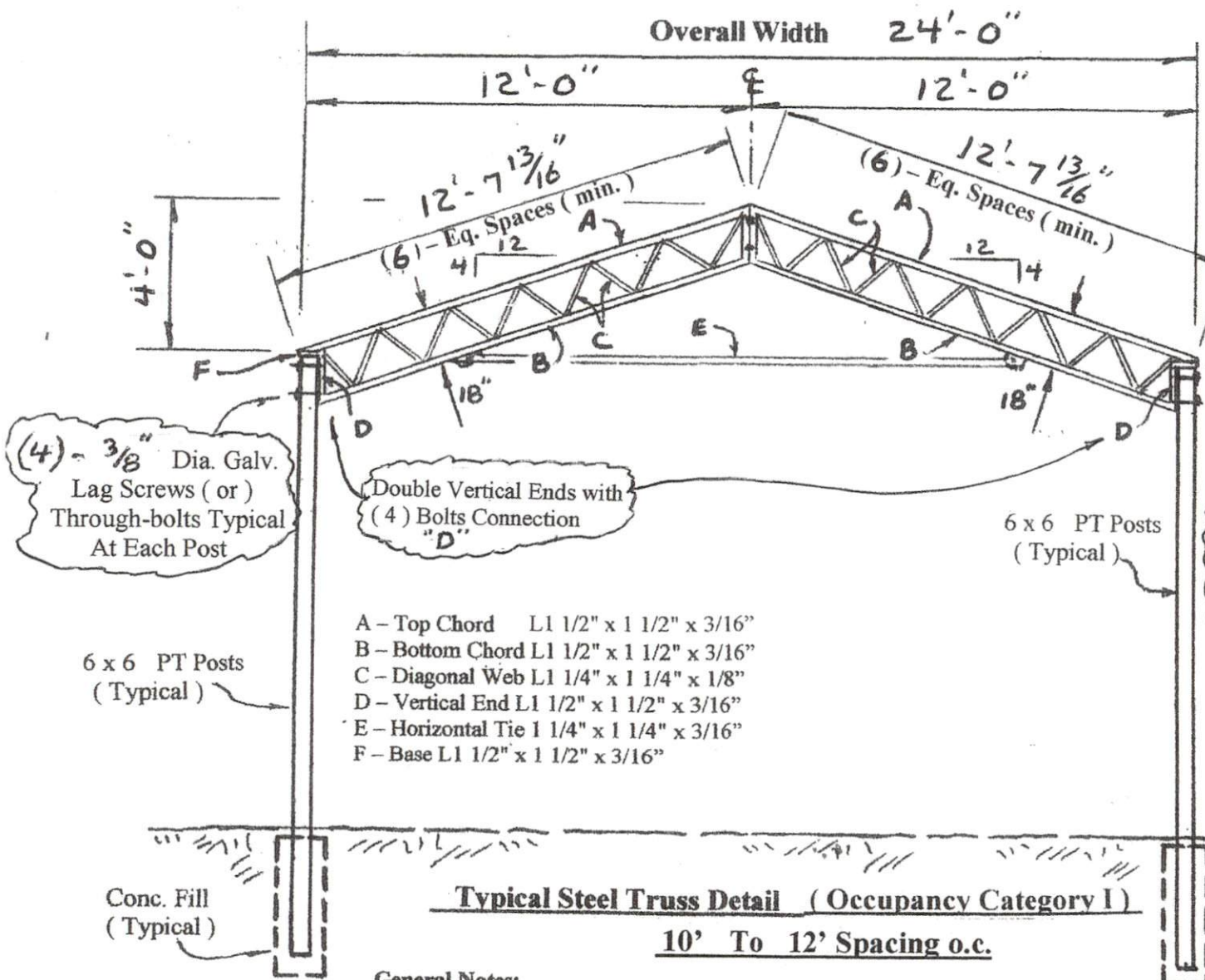


Allen/Amber Honeycutt
Lafayette Road
Harnett County, NC

VINCANNON DESIGN
COURT HOUSE PLAZA
KODOLY-HARRIS, NC 27547-3734

DRAWN BY: URY
CHECKED BY: URY
DATE: 06/04/19
REVISIONS

SHEET
A-2



Typical Steel Truss Detail (Occupancy Category I)
10' To 12' Spacing o.c.

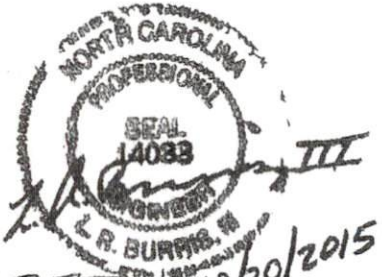
General Notes:

- 1.) Truss Depth 18"
- 2.) Truss Spacing = 10'-0" o.c. to 12'-0" o.c.
- 3.) Top Chord Purlin Spacing @ 2'-0" max. o.c. (2x6 purlins min.)
- 4.) Bottom Chord Bracing / Bottom Chord Purlin Spacing @ 4'-0" max. o.c.
- 5.) All Welds shall be 3/16" minimum fillet weld typical.
- 6.) All Steel shall be A-36 minimum strength.
- 7.) Connection Bolts, steel to steel, shall be A-307 min.

16 Ga. Steel Formed Cups Shop
 Welded To Top Chord of Trusses.
 Each 2x6 Purlin Attached To Each Steel
 Cup with (4) Screw Connectors.

End Connections (Typical)
 (4) - 3/8" dia. Lag Screws

Design Loading:
 Total Loading = 32 psf
 DL = 12 psf LL = 20 psf Snow = 20 psf
 Wind Speed = 110 mph Exposure C
 Occupancy Category I
 Design Soil Bearing Capacity = 2,000 psf
 3,000 psi minimum concrete mix



Revised 10/20/2015 RAB III

Typical Truss Detail	24 Ft. Span
Truss Spacing 10' To 12' On Center	
2012 NC Building Code	
Fabrication By: R and R Ironworks	
Morganton, NC	
10-20-2015	Sheet S1 of 1