



GREG ROBINSON, P.E.
CONSULTING ENGINEER

6512 Six Forks Road, Suite 403A
Raleigh, North Carolina 27615
(919) 846-4752 (919) 847-0455 fax
greg@gar-pe.com



1732 Westover Drive
Sanford, North Carolina 27330
919 . 776 . 0206
info@sheddepot.com

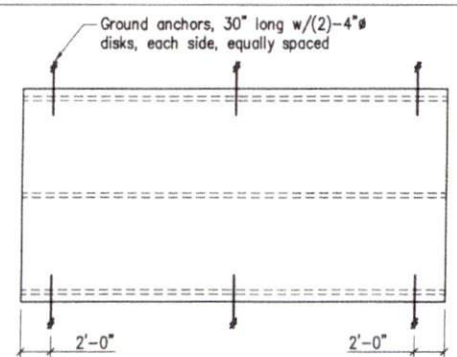


GENERAL NOTES AND OUTLINE SPECIFICATIONS

- 01000 GENERAL**
- Design Live Loads
 - Floor 40 psf
 - Roof 20 psf
 - Ground Snow Loads (2018 NC Building Code, 2015 IRC, ASCE 7-10)
 - Ground Snow Load: 15 psf
 - Wind loads (2018 NC Building Code, 2015 IRC, ASCE 7-10)
 - Basic Wind Velocity (ultimate): 120 mph; Exposure: C; Category III
 - Lateral design controlled by Wind Loads.
- 02000 FOUNDATION**
- Design soil bearing capacity: 2,000 psf (presumed).
- 06090 PRE-ENGINEERED WOOD CONNECTORS**
- Connectors shall be hot-dipped galvanized or electro-plated galvanized with a minimum coating of G90.
 - Nails shall be "common" unless otherwise noted in the drawings.
- 06110 WOOD FRAMING**
- Unless noted otherwise: kiln-dried, S-P-F, #2 grade, surfaced dry, 15 percent maximum moisture content.
 - Floor joists: preservative-treated, kiln-dried, Southern Pine, #2 grade, surfaced dry, 15 percent maximum moisture content.
 - Mud sills: preservative treated, kiln-dried, Southern Pine, #2 grade, surfaced dry, 19 percent maximum moisture content.
 - Nail sizes:

Pennyweight	Length (inches)	Diameter (inches)
8d	2.5	0.131
10d	3	0.148
12d	3.25	0.148
- 06120 STRUCTURAL WOOD PANELS**
- Sheathing shall conform to the grading rules of U.S. Product Standard PS 1, latest edition, and shall have appropriate grade trade mark of an American Plywood Association approved agency on each plywood panel. Sheathing shall be APA rated sheathing in thicknesses and span ratings shown drawings. Sheathing shall be applied in full sheets or in largest pieces practical for the area being covered.
 - Particleboard sheathing: ANSI A208.1 APA Oriented Strand Board; wood flakes set with waterproof resin binder; unsanded faces.
 - Secure roof sheathing perpendicular to framing members with ends staggered and sheet ends over firm bearing.
 - Secure wall sheathing with long dimension parallel to wall studs, with ends over firm bearing and staggered.
 - Install sheathing two span continuous minimum.

14'-0" x 30'-0" to 36'-0" A-Frame Shed



Ground Anchors
Scale: 1/8"=1'-0"

Ground Anchor Schedule		
Building Length	Number of Ground Anchors Each Long Side	(ANCHOR SIZE)
30 ft - 36 ft	3	
12 ft - 28 ft	2	

Notes:

- Minimum uplift capacity of each anchor: 2,300 pounds
- Install ground anchors and strapping in accordance with manufacturer's instructions

- DRAWING INDEX:**
- C1 Cover Sheet and General Notes
 - 2 Floor and Wall Framing Plans
 - 3 Roof Framing Plans and Exterior Elevations
 - 4 Wall Framing Elevations and Wall Section
 - D1 Details
 - D2 Details

GARPE Project #19009
Date: 04JUN19



for [Signature]
04 JUN 19

THE Shed Depot
OF NORTH CAROLINA

GREG ROBINSON, P.E.
REGISTERED ENGINEER

6512 Six Forks Road, Suite 403A
Raleigh, North Carolina 27615
(919) 843-4152 (919) 843-8555 fax
greg@shed-depot.com

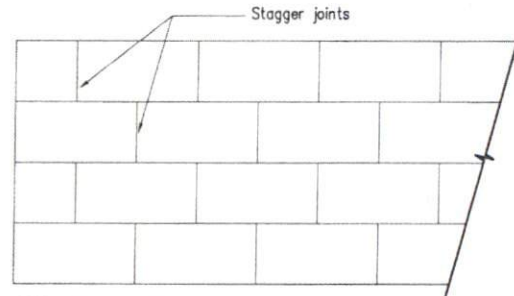
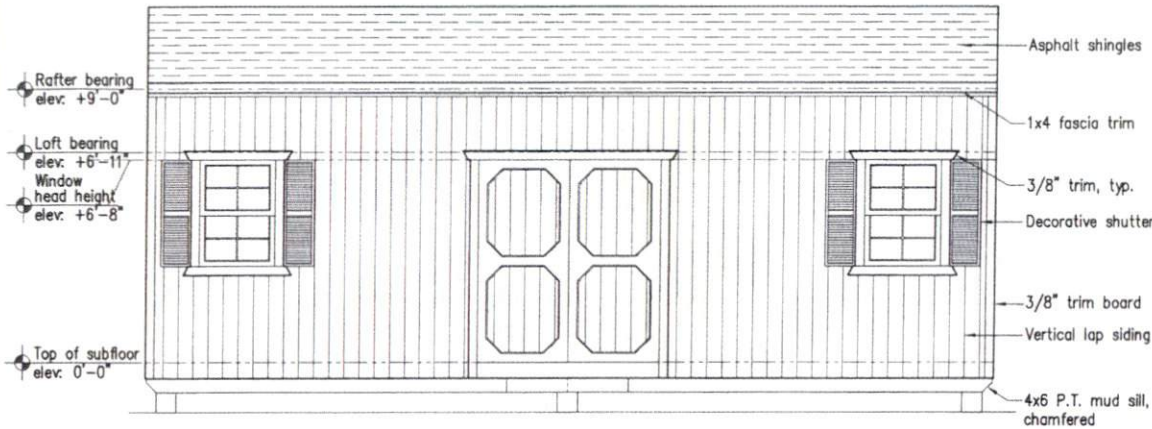
14' x 30' to 36' x 9' Storage Shed

GARPE Job # 19009

Drawn	GAR
Checked	GAR
Date	04JUN19
Rev	
Rev	

3

3 of 6

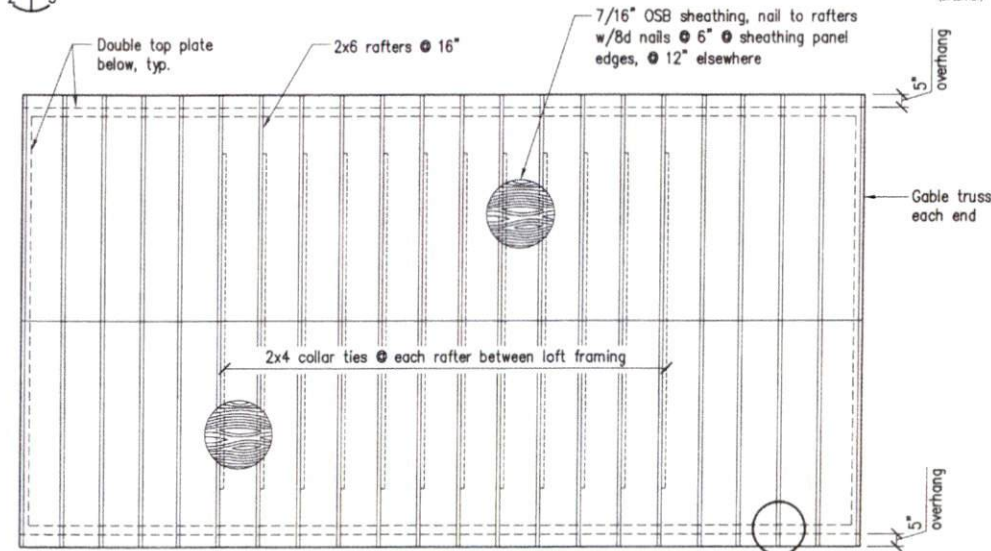


C Exterior Elevation

Scale: 1/4"=1'-0" (Ext_Elev_1)

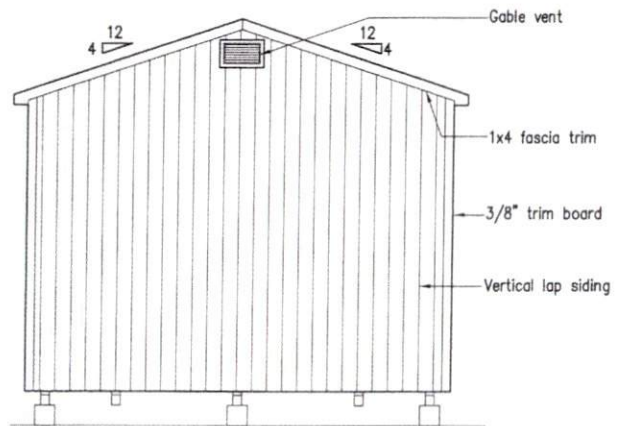
D Roof Sheathing Joint Pattern

Scale: N.T.S. (Sheathing_Joint_Pattern)



A Roof Framing Plan

Scale: 1/4"=1'-0" (Roof_Framing_Plan)

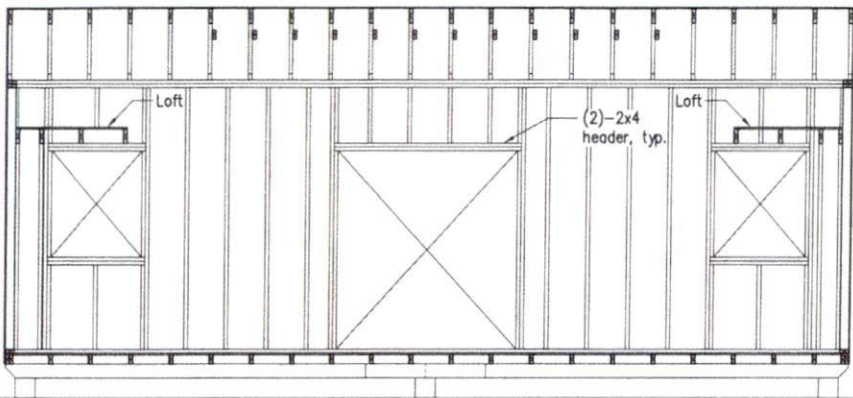


B Exterior Elevation

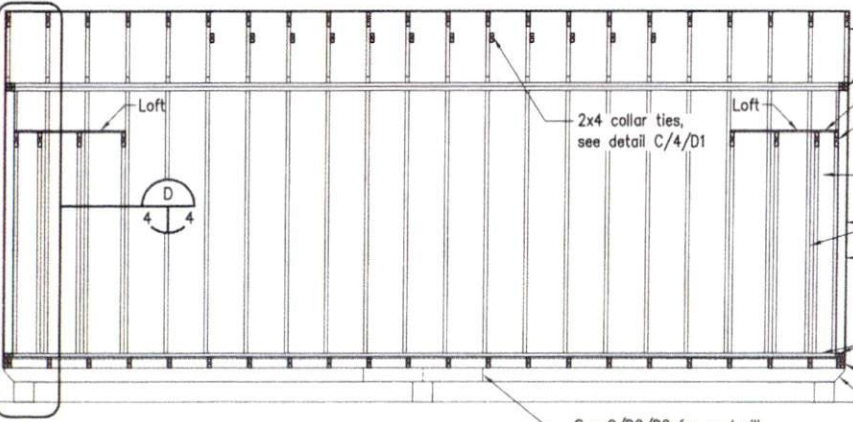
Scale: 1/4"=1'-0" (Ext_Elev_2)



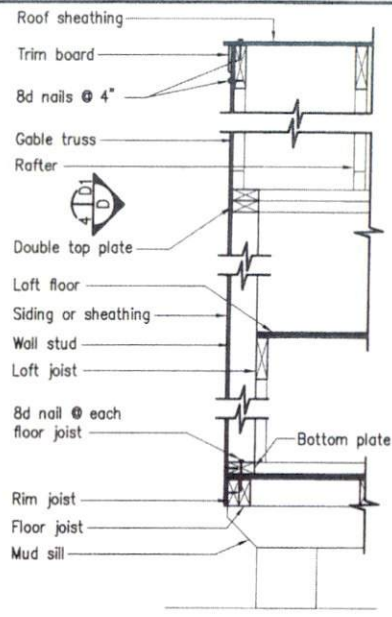
04 JUN 19



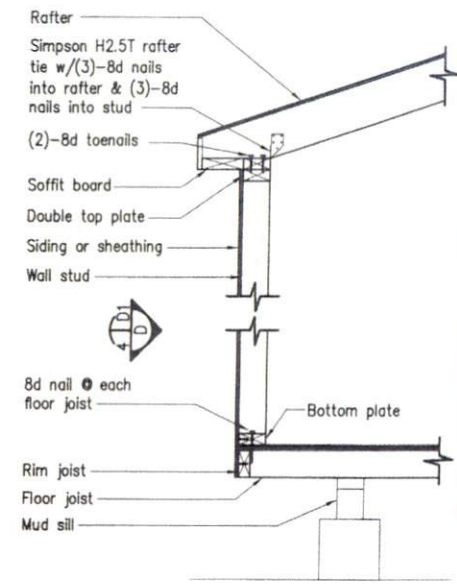
C Wall Framing Elevation
 Scale: 1/4"=1'-0"
 (Wall_Dev_3)



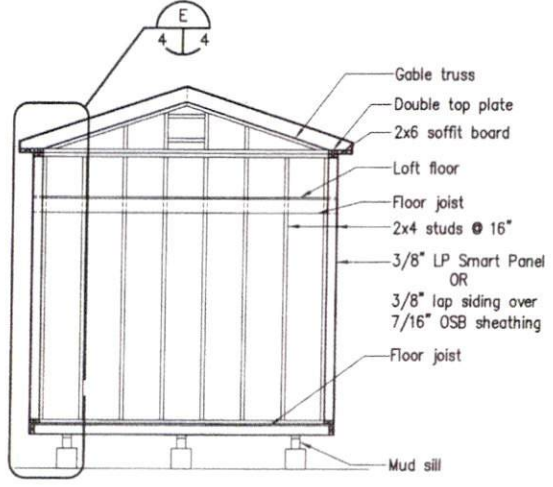
A Wall Framing Elevation
 Scale: 1/4"=1'-0"
 (Wall_Dev_1)



D Wall Section
 Scale: 3/4"=1'-0"
 (Wall_Section_1a)



E Wall Section
 Scale: 3/4"=1'-0"
 (Wall_Section_1b)



B Wall Framing Elevation
 Scale: 1/4"=1'-0"
 (Wall_Dev_2)



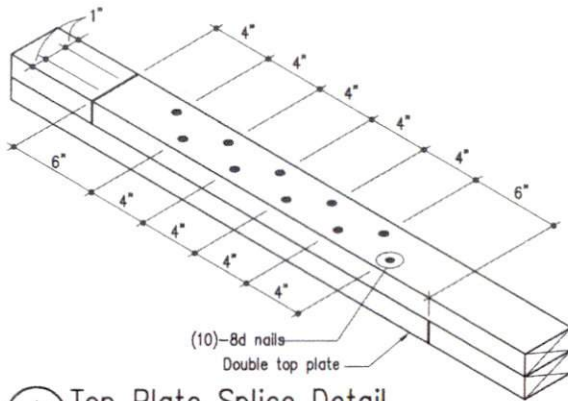
GREG ROBINSON, P.E.
 PROFESSIONAL ENGINEER

6512 Six Forks Road, Suite 403A
 Raleigh, North Carolina 27615
 (919) 846-4152 (919) 847-8455 fax
 greg@shed-depot.com

14' x 30' to 36' x 9' Storage Shed

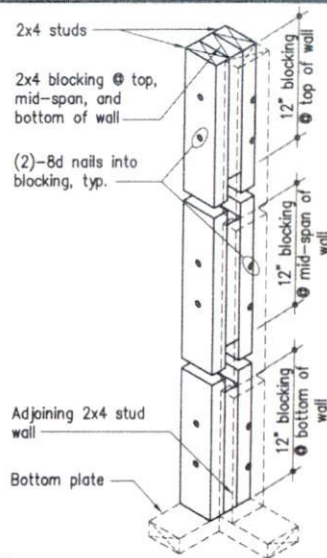
CARPE Job # 19009

Drawn	GAR
Checked	GAR
Date	04JUN19
Rev	



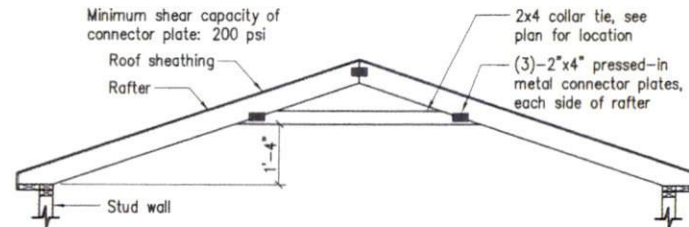
A Top Plate Splice Detail

(Top_Plate_Splice) Scale: 1 1/2"=1'-0"



B Corner Framing Detail

(Corner_Detail) Scale: 1"=1'-0"



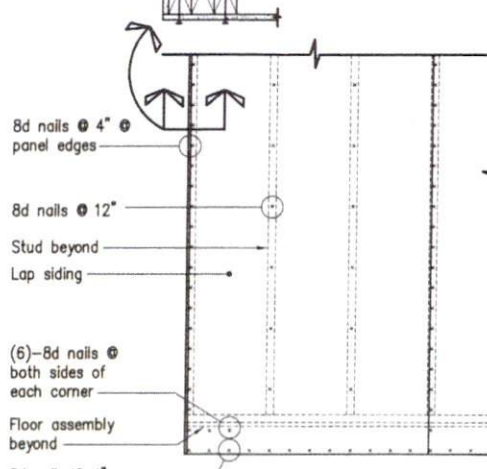
C Collar Tie Attachment Detail

(Collar_Tie) Scale: 3/8"=1'-0"



Typical Corner

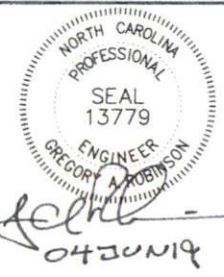
Typical Joint



D Panel Nailing Patterns

(Wall_Pattern) Scale: 1/2"=1'-0"

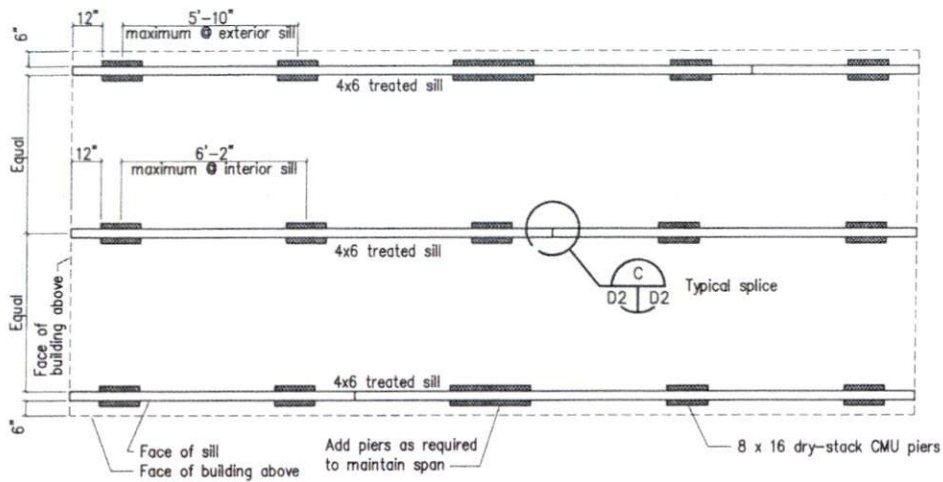
(Wall_Pattern) Scale: 1/2"=1'-0"



GAR ROBINSON, P.L.
CORPORATE OFFICE
6512 Six Forks Road, Suite 403A
Raleigh, North Carolina 27615
(919) 848-4752 (919) 847-8555 FAX
greg@gar-pl.com

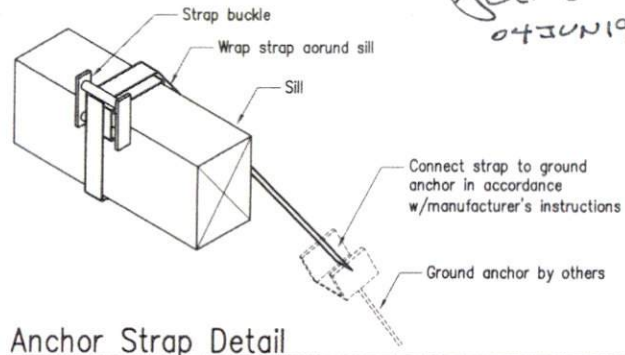
14' x 30' to 36' x 9' Storage Shed
GARPE Job # 19009

Drawn GAR
Checked GAR
Date 04JUN19
Rev
Rev



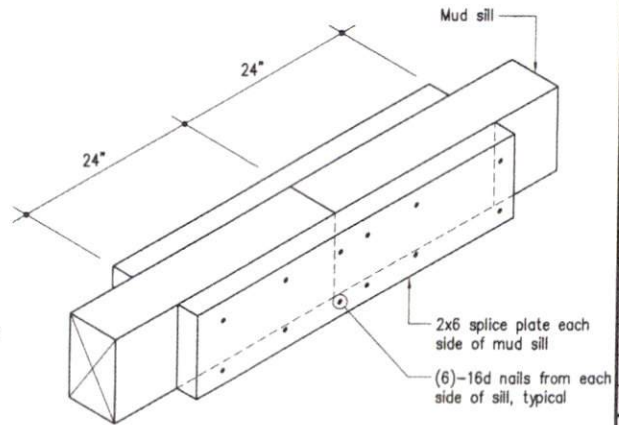
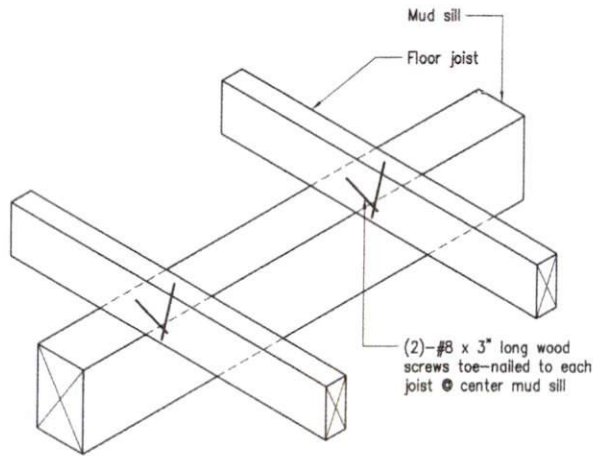
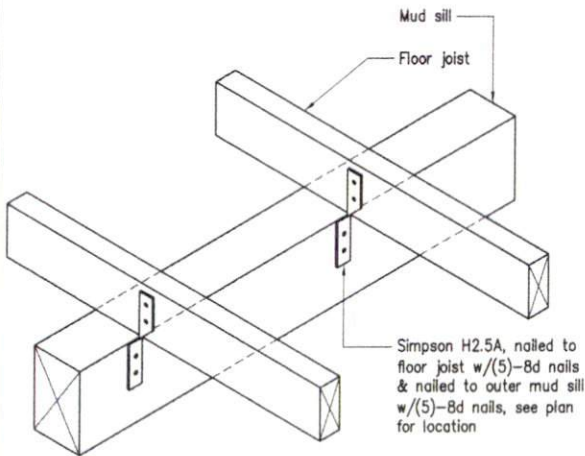
Floor Framing and Foundation Pier Plan, 14' x 36' (maximum)

(P.L.) Scale: 1/4"=1'-0"



Anchor Strap Detail

(STRAP) Scale: 1 1/2"=1'-0"



(A) Floor Joist to Outer Mud Sill Connection Detail

(A) Scale: 1 1/2"=1'-0"

(B) Floor Joist to Inner Mud Sill Connection Detail

(B) Scale: 1 1/2"=1'-0"

(C) Mud Sill Splice Detail

(C) Scale: 1 1/2"=1'-0"



GREG ROBINSON, P.E.
CORPORATE ENGINEER

6512 Six Forks Road, Suite 403A
Raleigh, North Carolina 27615
(919) 843-4352 (919) 843-4355 fax
greg@shed-depot.com

14' x 30' to 36' x 9' Storage Shed

GARPE Job # 19009

Drawn	GAR
Checked	GAR
Date	04JUN19
Rev	
Rev	

D2
6 of 6