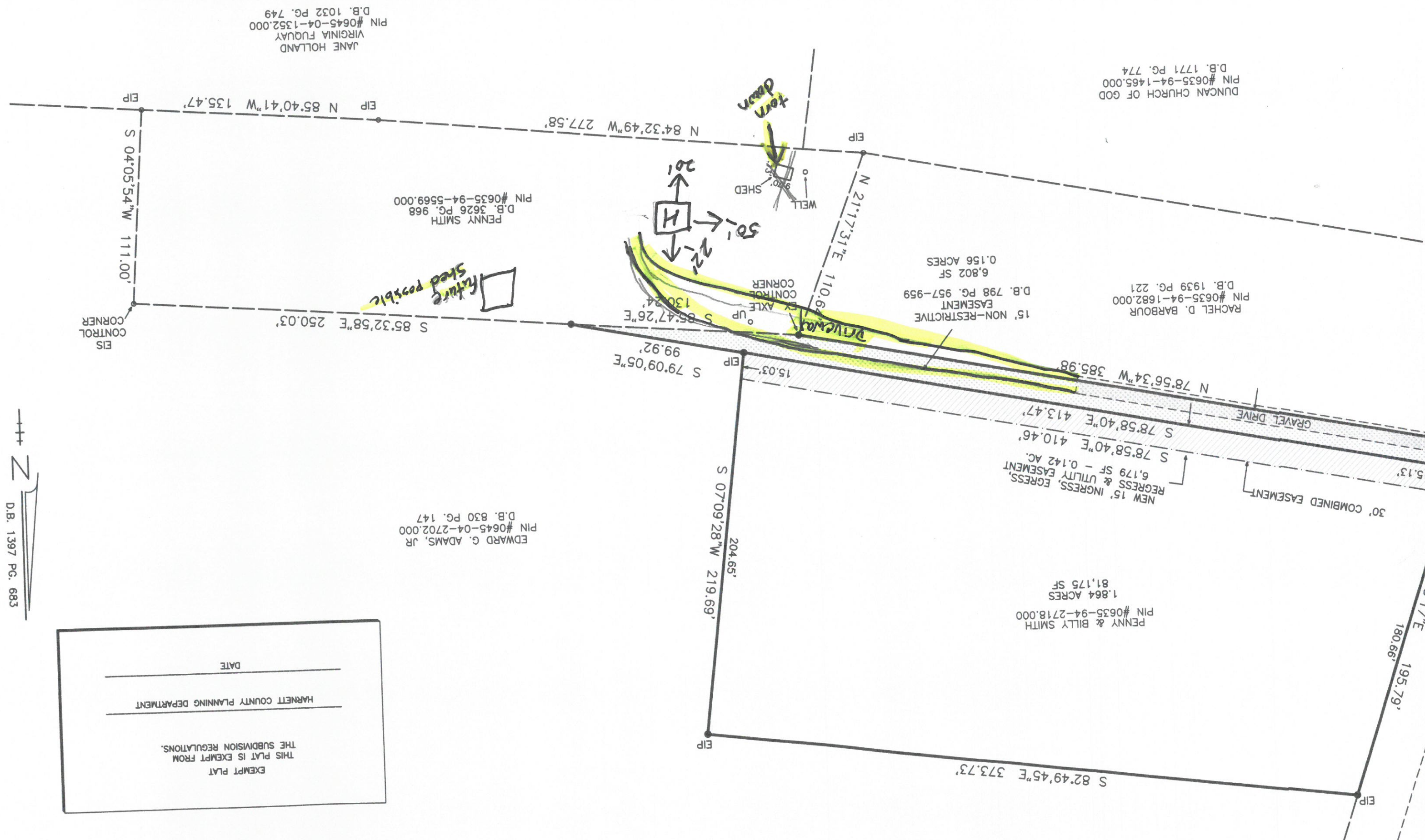


F.E.M.A. MAP #3720062400  
 EFF. DATE: 10/3/2006 ZONE X  
 ALL DISTANCES GROUND HORIZONTAL UNLESS  
 NOTED OTHERWISE.

TAX PARCEL I.D. NUMBER \_\_\_\_\_  
 OWNER \_\_\_\_\_  
 OWNER \_\_\_\_\_

EXEMPT PLAT  
 THIS PLAT IS EXEMPT FROM  
 THE SUBDIVISION REGULATIONS.  
 HARRIETT COUNTY PLANNING DEPARTMENT  
 \_\_\_\_\_  
 DATE \_\_\_\_\_

D.B. 1397 PG. 683



JANE HOLLAND  
 VIRGINIA FUQUAY  
 PIN #0645-04-1352.000  
 D.B. 1032 PG. 749

PENNY SMITH  
 D.B. 3626 PG. 968  
 PIN #0635-94-5569.000

DUNCAN CHURCH OF GOD  
 PIN #0635-94-1465.000  
 D.B. 1771 PG. 774

RACHEL D. BARBOUR  
 PIN #0635-94-1682.000  
 D.B. 1939 PG. 221

15' NON-RESTRICTIVE  
 EASEMENT  
 D.B. 798 PG. 957-959  
 6,802 SF  
 0.156 ACRES

EDWARD G. ADAMS, JR  
 PIN #0645-04-2702.000  
 D.B. 830 PG. 147

PENNY & BILLY SMITH  
 PIN #0635-94-2718.000  
 81,175 SF  
 1.864 ACRES