





48'

34'

12'

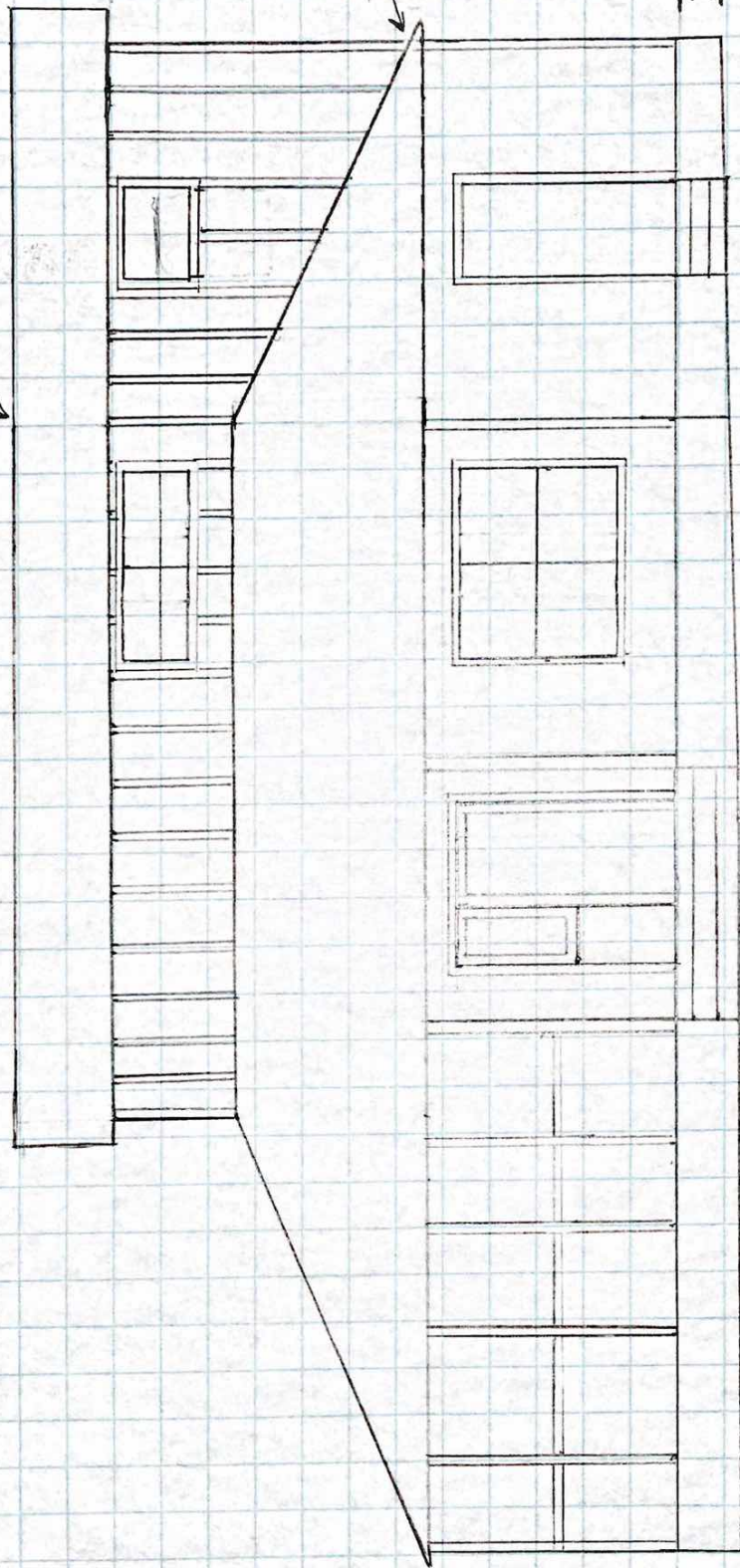
MATCHING ROOF LINE ELEVATION

12' x 11 1/2' ADDITION

HIP ROOF EXTENSION OVER PORCH

11' 8"

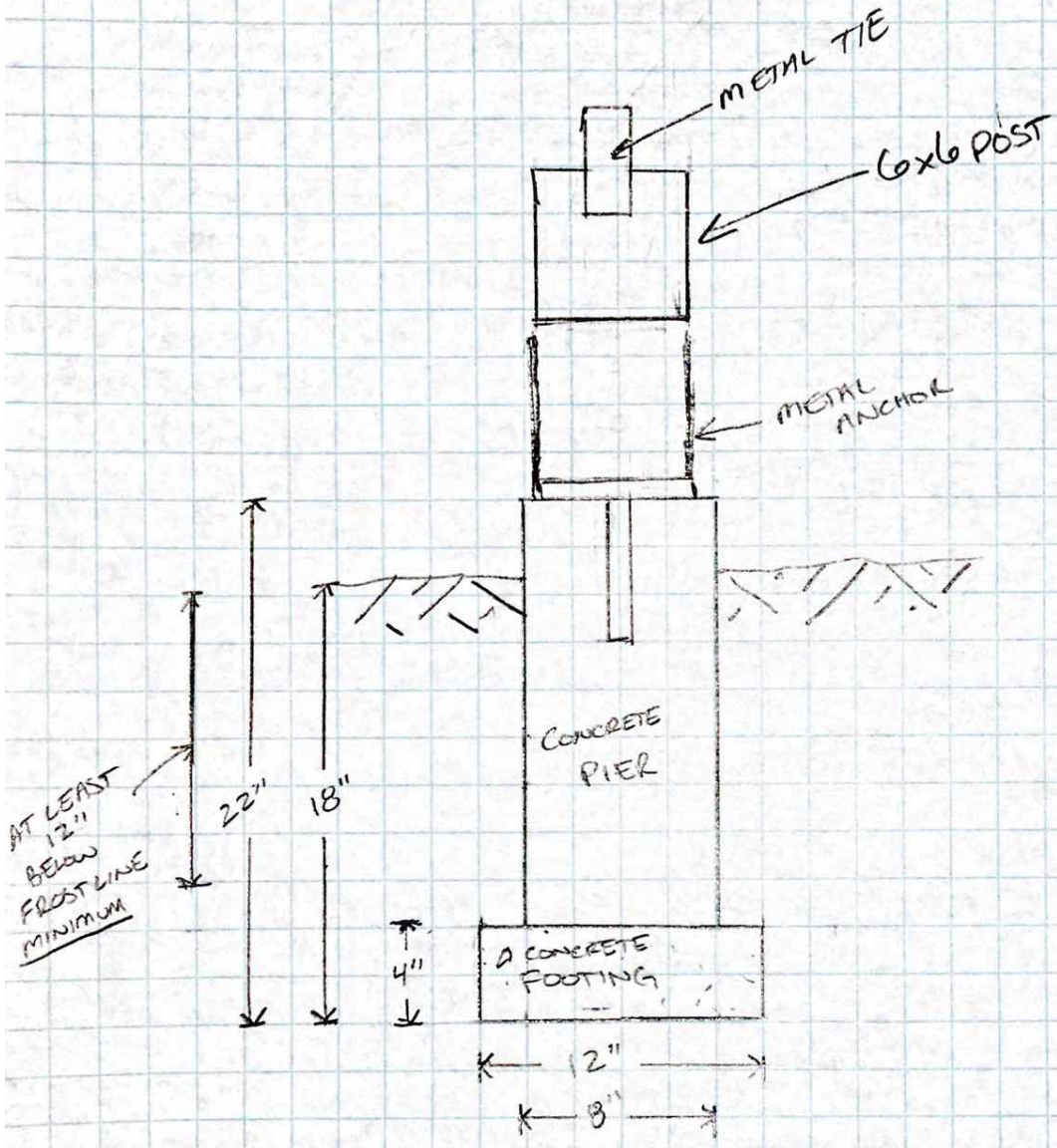
MATCHING FOUNDATION ELEVATION



SCALE: 3/16" = 1'  
 VIEW: FRONT ELEVATION  
 DATE: 4/11/2019  
 BY: FAL BOSE

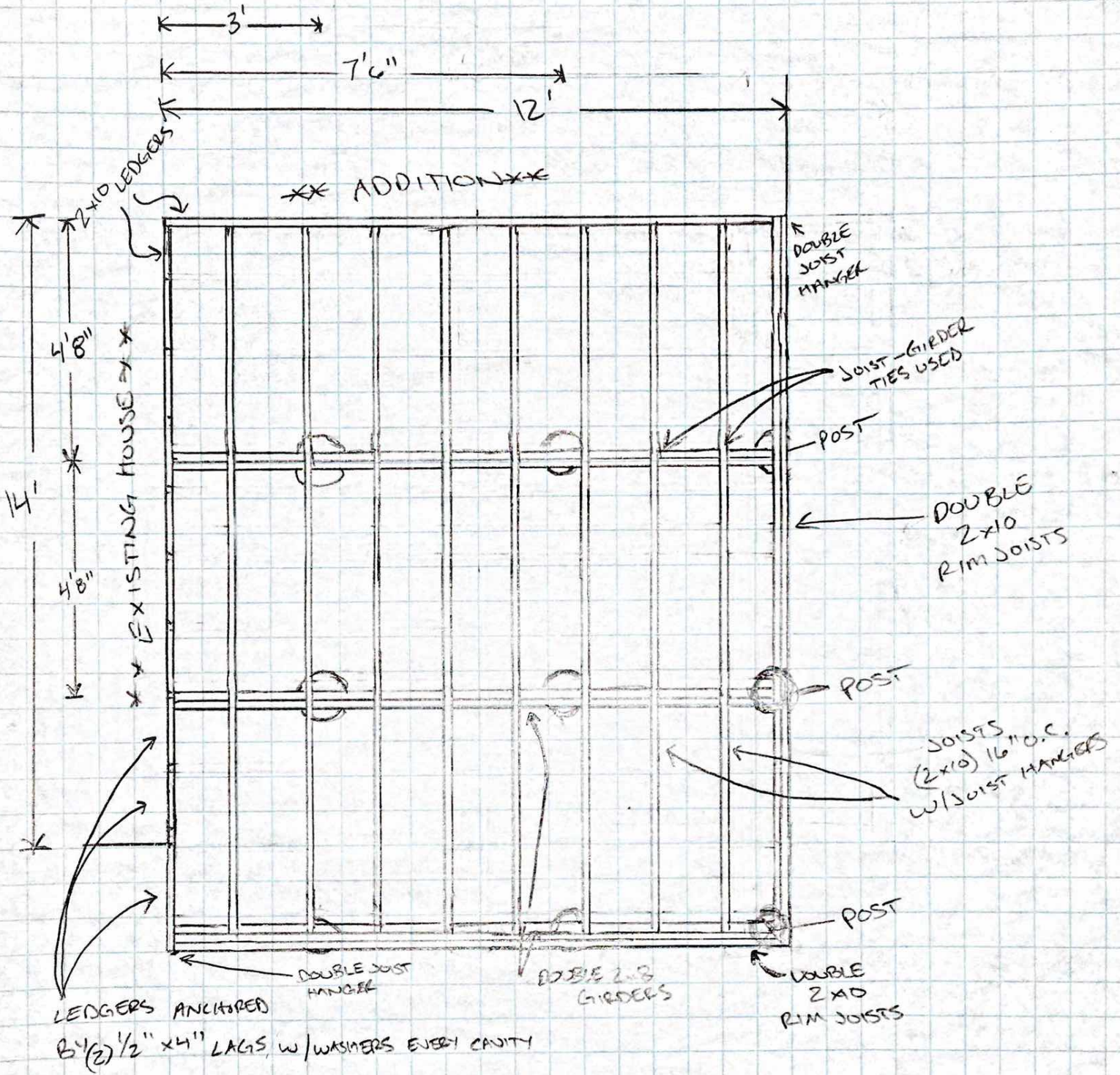
REVISION  
 ON 31 JULY, 2020





SCALE: 1/2" = 1'  
 VIEW: PIER FOUNDATION  
 DATE: 31 JULY 2020  
 BY: ERIC BOYER

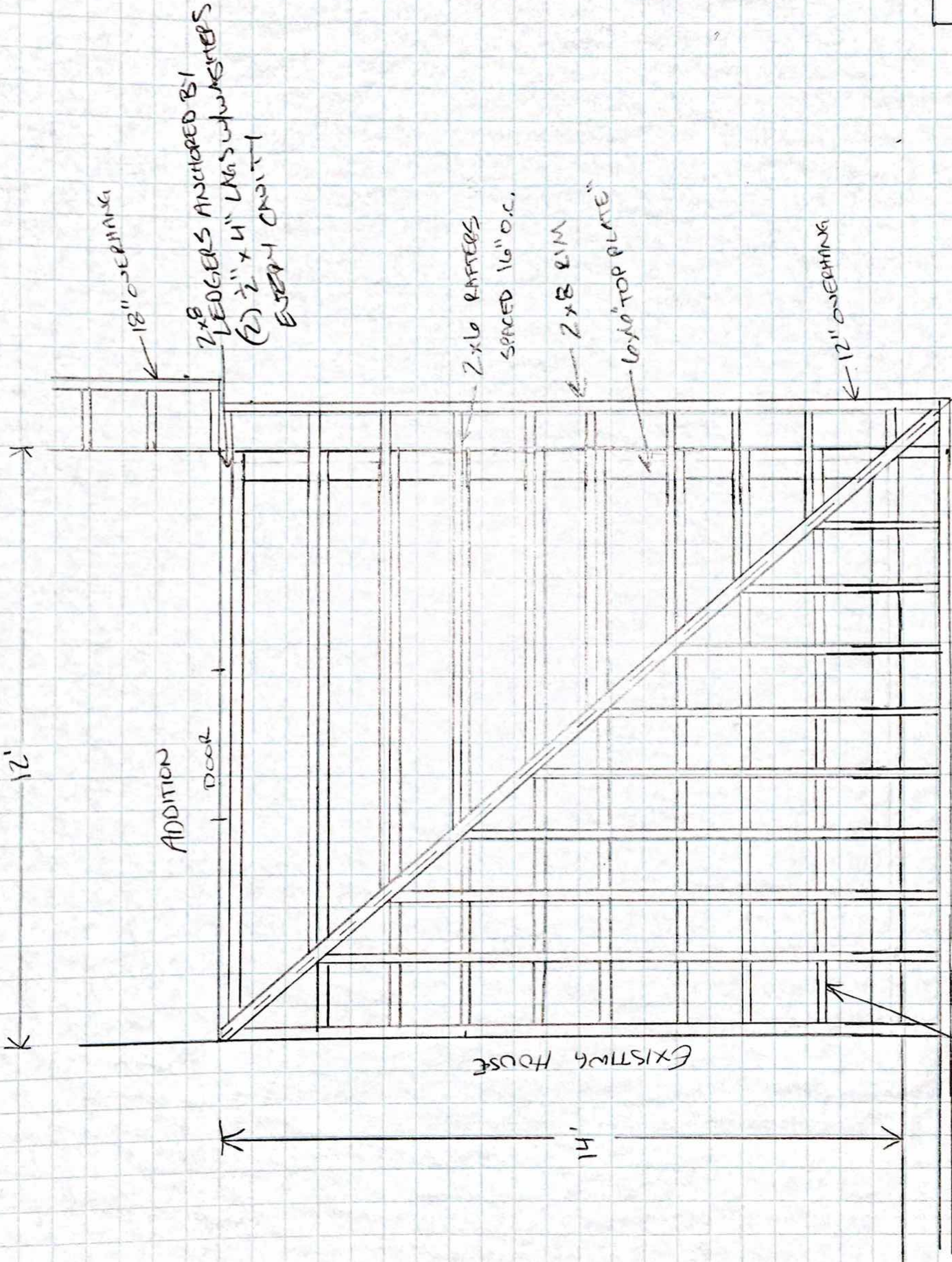




SCALE: 3/8" = 1'  
 VIEW: TOP FRONT  
 PORCH FLOOR  
 DATE: 31 JULY 2020  
 BY: ERIC BOTER



SCALE: 3/8" = 1'  
 VIEW: TOP FRONT PORCH  
 DATE: 31 JULY 2020  
 BY: ERIC GUMER



18" OVERHANG

2x8 LEDGERS ANCHORED BY (2) 2" x 4" LAGS WITH WASHERS EVERY 4' ON CENTER

2x16 RAFTERS SPACED 16" O.C.

2x8 RIM

6x10" TOP PLATE

12" OVERHANG

ADDITION

DOOR

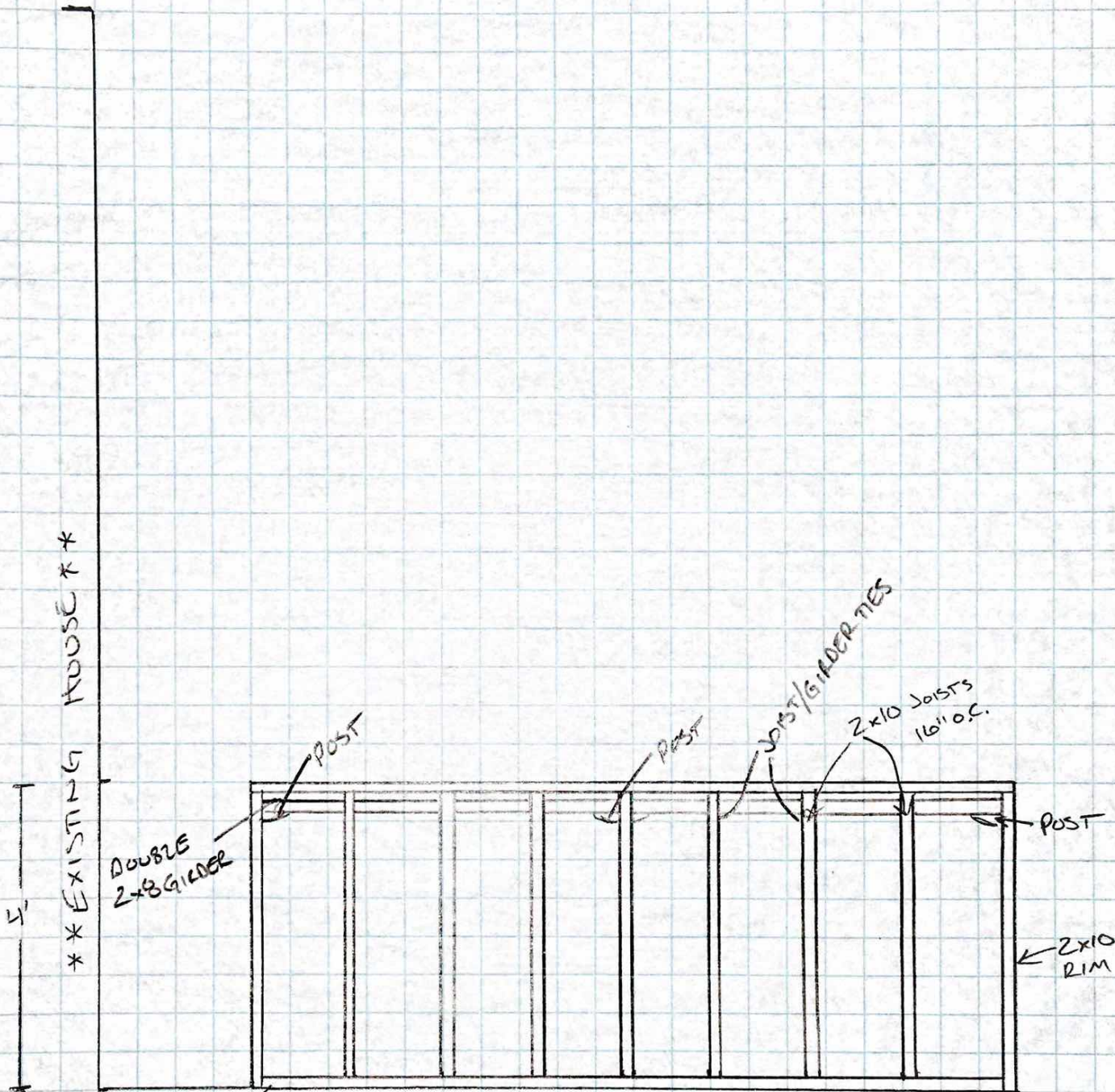
EXISTING HOUSE

(2x10) CEILING JOISTS 16" O.C.

12'

14'





4'  
 \*\* EXISTING HOUSE \*\*

DOUBLE  
 2x8 GIRDER

POST

POST

JOIST/GIRDER TIES

2x10 JOISTS  
 16" O.C.

POST

2x10 RIM

\*\* ADDITION \*\*

10'

2x10 LEDGER  
 PROCHORED BY  
 (2) 1/2" x 4" LAGS w/  
 WASHERS EVERY CAVITY

SCALE: 1/2" : 1'  
 VIEW: TOP REAR  
 PORCH FLOOR  
 DATE: 12 AUG 2020  
 BY: ERIC BOYER



EXISTING HOUSE

5'

2x6 CEILING JOISTS 16" O.C.  
12" OVERHANG

6x6" TOP PLATE  
2x6 RIM

2x6 RAFTERS  
SPACED 16" O.C.

ADDITION

12'

19" OVERHANG

(2) 2x6 LEDGER ANCHORED BY 1/2" x 4" LAGS w/ WASHERS EVERY CAVITY

SCALE: 1/2" : 1  
VIEW: TOP REAR PORCH ROOF  
DATE: 12 AUG 2020  
BY: ERIC BOYER

