

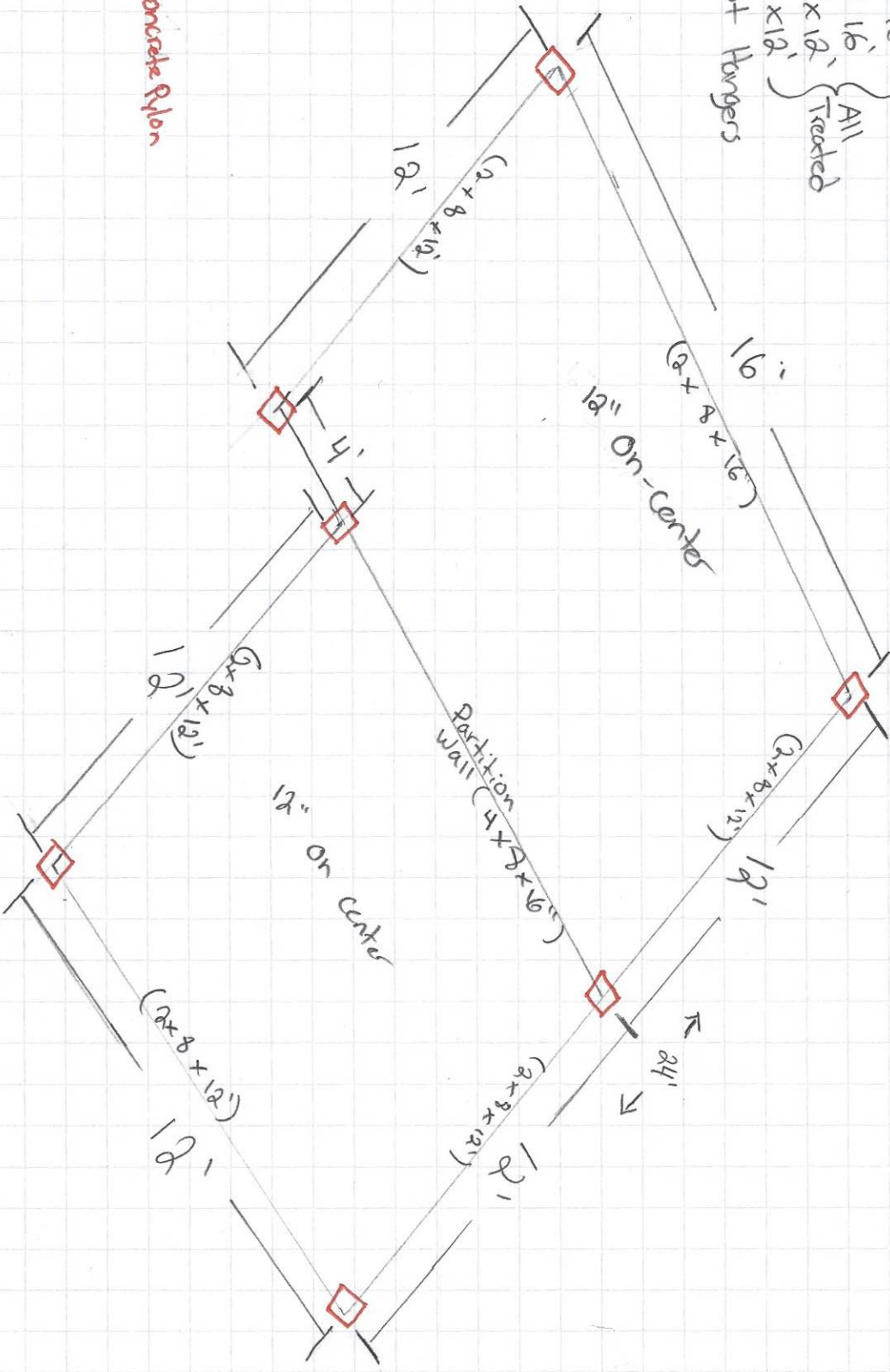
Foundation

Dimensions: $18' \times 16'$ (permit) + $12' \times 12'$

Materials:

- 1) 7 - Concrete pylons
- 2) 1 - $2 \times 8 \times 8 \times 16'$
- 3) 1 - $4 \times 8 \times 16'$ } All Treated
- 4) 21 - $2 \times 8 \times 12'$
- 5) 9 - $2 \times 6 \times 12'$
- 6) 58 - Joist Hangers

Notes: total sq ft 336



Legend

= Location of Concrete Pylon

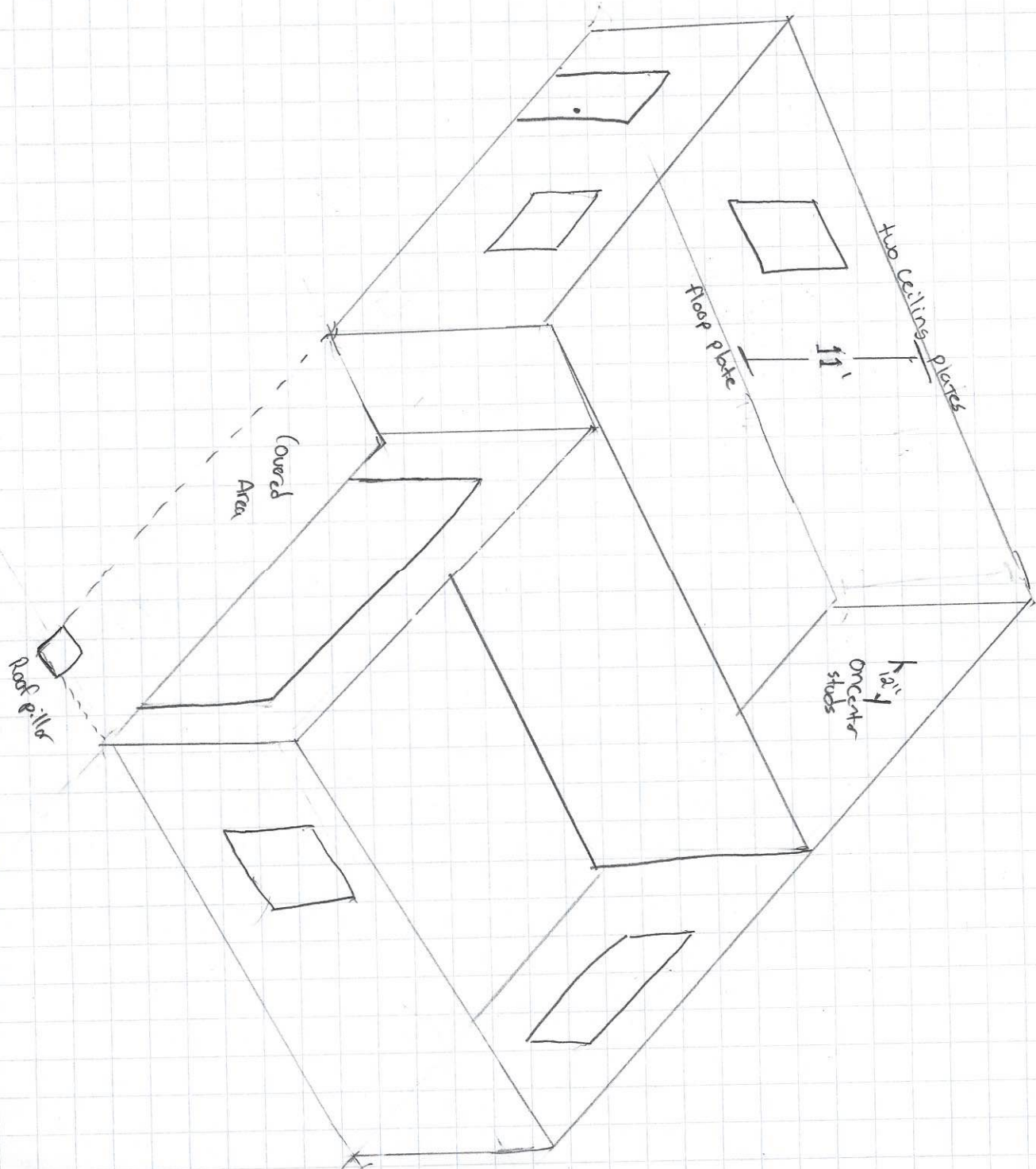
Walls:

Materials

- 1) 65 - studs
 - 2) 4 - 4" x 4" x 8'
 - 3) 20 - 2" x 4" x 12'
 - 4) 12 - 2" x 8" x 10'
 - 5) 20 - 2" x 6" x 16'
 - 6) 20 - plate brackets
 - 7) 50 - 1/2" OSB particle board
 - 8) 12 - 1" Treated Plywood
- a) weather wrapping
b) Niple

Notes: 4 windows

- 1 - Garage manual door
- 1 - wood door
- 12" on center studs



Roof:

Dimensions:

pitch = 6/12
Eaves stick out 1 feet
Box Gable style

Materials:

- 1) 4- 4x4x8
- 2) 20- 2x4x12
- 3) 12- 2x8x10
- 4) 20- 2x6x16
- 5) 20- plate brackets
- 6) 50- 1/2" OSB Particle Board
- 7) 12- 1" Treated Plywood
- 8) Shingles - 16 Bundles

