

2x4 TREATED BOTTOM PLATES

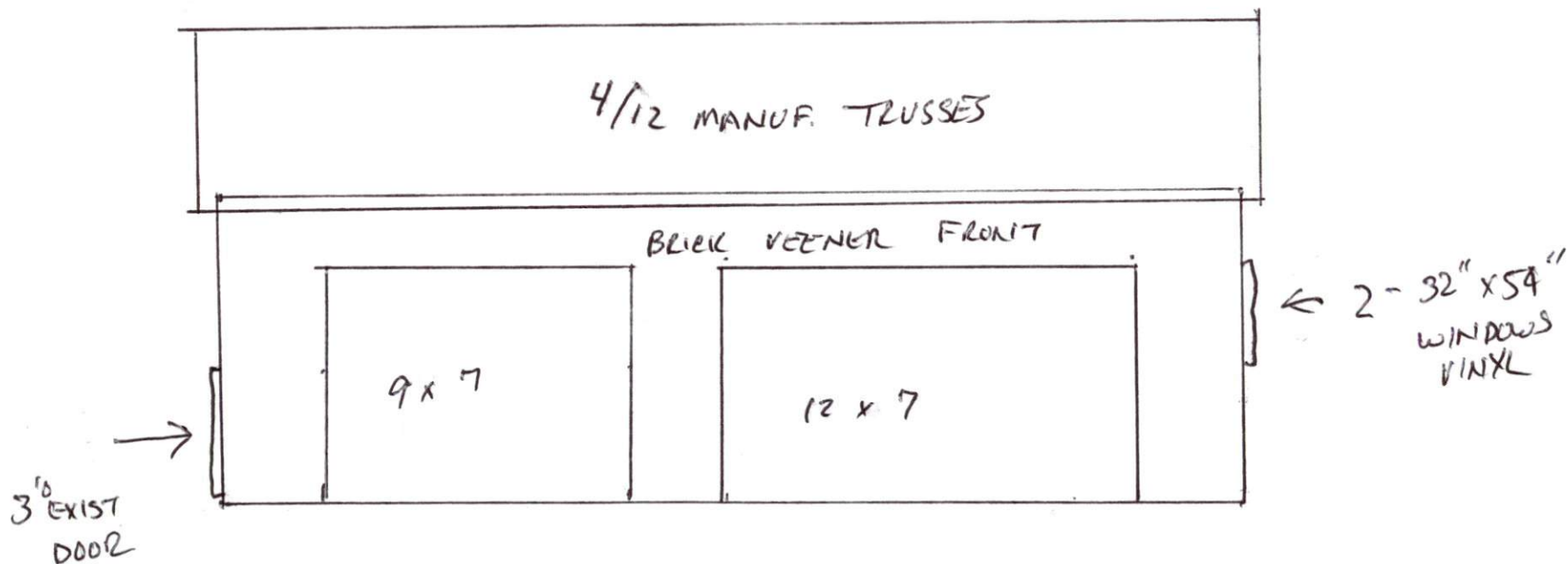
PRECUT 105" STUDS

DOUBLE TOP PLATE 2x4 CONSTR.

7/16 OSB SHEETING WALLS & ROOF

BRICK VEENER ON FRONT ONLY.

WHITE VINYL SOFFIT, SIDING & TRIM



8 x 20 EXTERIOR FOOTING  
w/ 4" SLAB - ANCHORS 6' ON CENTER

