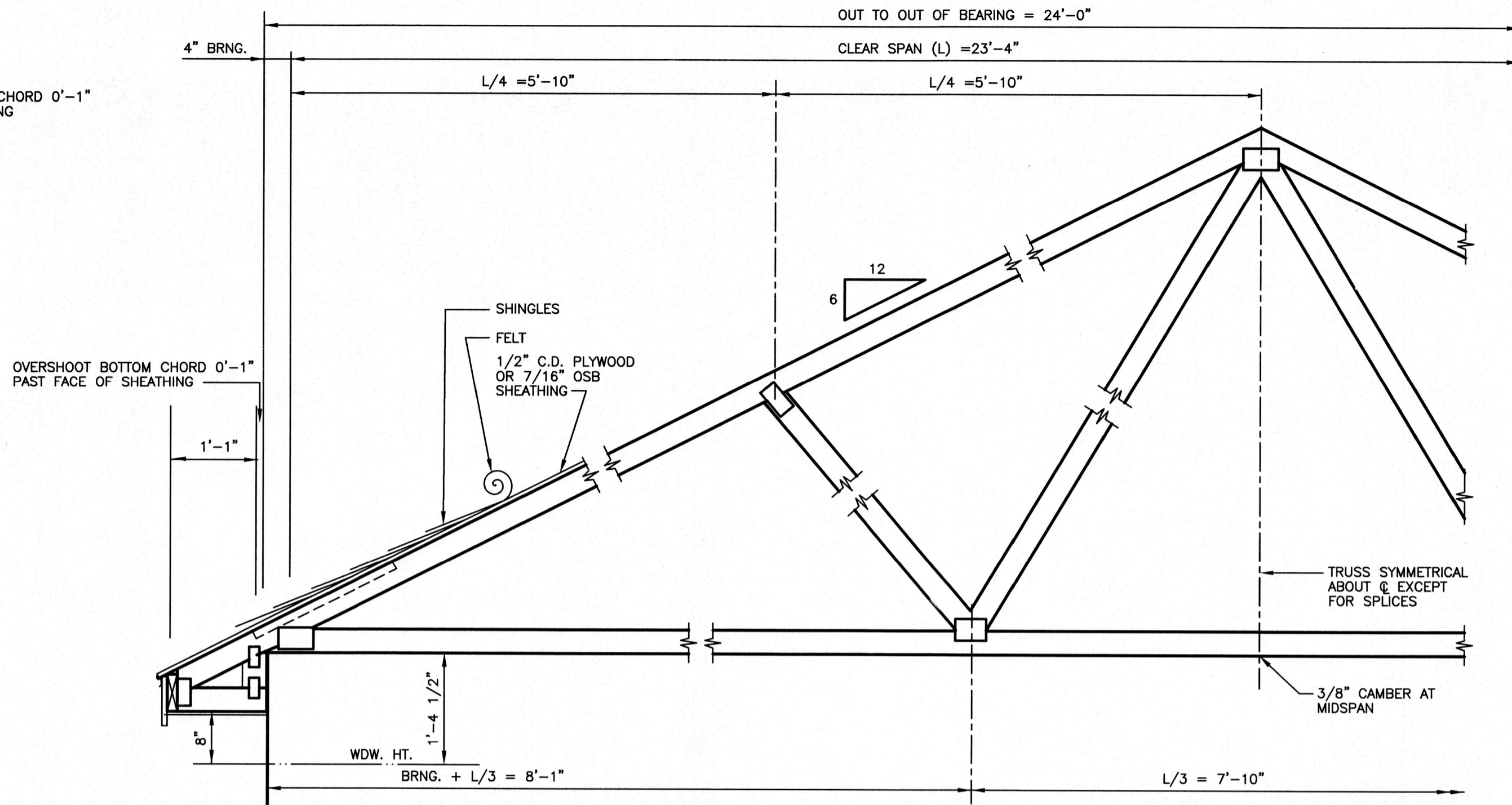


### TRUSS

SCALE 3/4" = 1'-0"  
 OVERSHOOT BOTTOM CHORD 0'-1"  
 PAST FACE OF BEARING

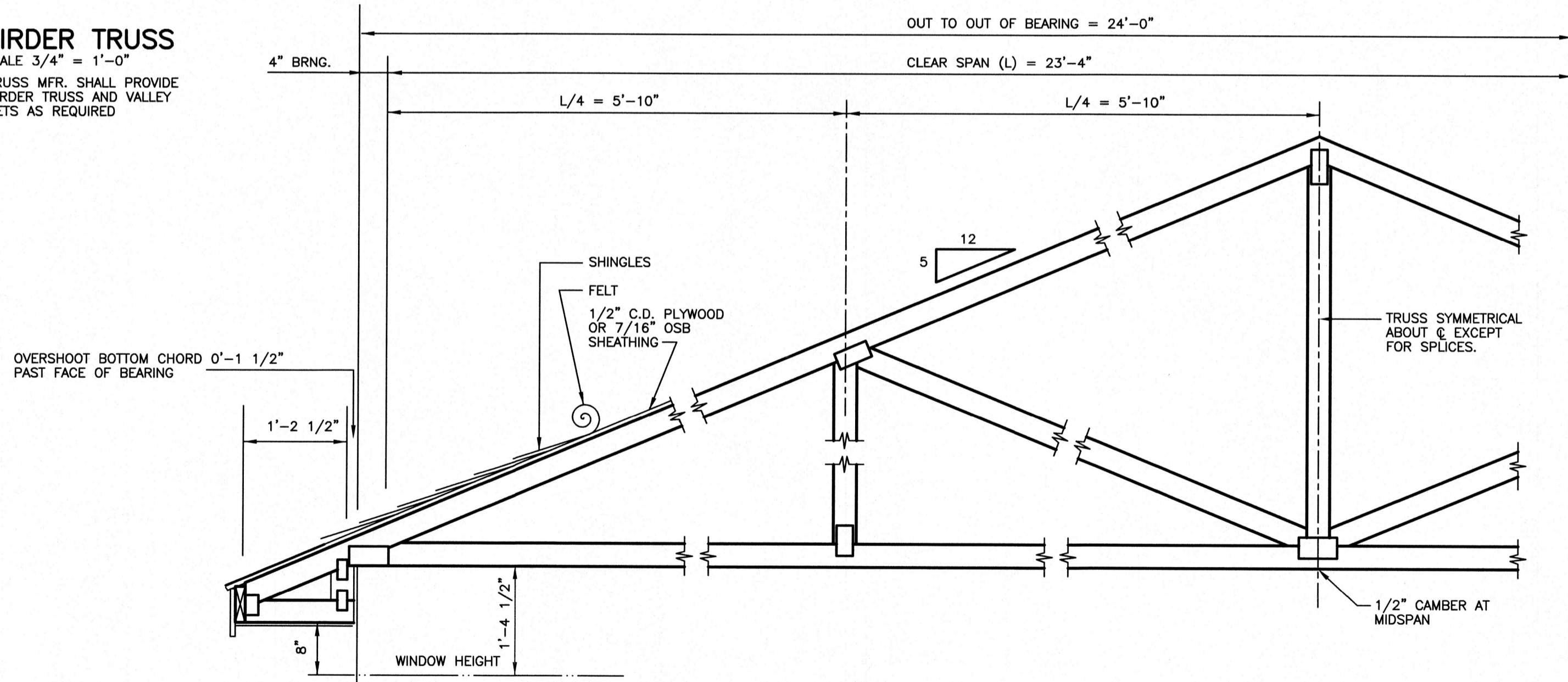


### TRUSS GENERAL NOTES

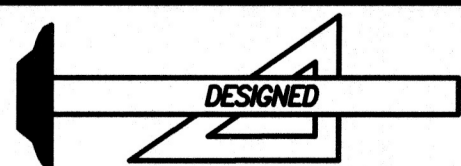
- ALL TRUSSES SHALL BE FACTORY BUILT TO MEET THE REQUIREMENTS OF LOCAL CODES, CLIMATIC CONDITIONS, AND AGENCIES INVOLVED.
- LUMBER:** ALL LUMBER TO BE STRESS GRADED AND SO MARKED, AND SHALL BE OF A DIMENSION TO CARRY ALL DESIGN LOADS SAFELY ACCORDING TO SOUND ENGINEERING PRACTICE.
- CONNECTIONS:** SAFE WORKING LOAD SHALL BE DETERMINED BY TRUSS MANUFACTURER.
- DESIGN:** MANUFACTURER SHALL PROVIDE A TRUSS IN WHICH THE ALLOWABLE WORKING STRESSES HAVE BEEN INCREASED 33% FOR SHORT TIME LOADING CONDITIONS.
- CONNECTION PLATES** SHALL BE 20 GAUGE (MIN.) GALVANIZED STEEL OF SUCH DESIGN AND SIZE TO PROVIDE A POSITIVE JOINT CONNECTION BETWEEN TWO OR MORE MEMBERS, AND TO SAFELY CARRY ANY COMBINED LOADS IMPOSED ON SAID JOINT. (TRUSS PLATES SHALL BE APPLIED ON BOTH SIDES OF JOINT.)
- FABRICATION:** ALL JOINTS SHALL BE ACCURATELY CUT FOR TRUE, FULL BEARING AND HELD FIRMLY IN PLACE UNTIL CONNECTION PLATE TEETH ARE IMBEDDED IN WOOD.  
  
KNOTTY WOOD WHICH WOULD REDUCE DESIGN CAPACITY, WILL NOT BE USED.  
  
TOP AND BOTTOM CHORD SHALL BE STRAIGHT AND TRUE-TO-LINE WITH A MINIMUM OF TWIST OR WARP.  
  
TOP AND BOTTOM CHORD SPLICES (WHEN REQUIRED) SHALL BE DESIGNED TO CARRY ALL LOADS IMPOSED AT SPLICE. TOP CHORD AND BOTTOM CHORD SPLICES SHALL NOT FALL IN SAME PANEL.
- NAILS** WHEN USED TO TEMPORARILY ALIGN PLATES PRIOR TO IMBEDMENT, SHALL BE 1 1/2" X 11" GAUGE "SCOTCH" NAILS OR EQUIVALENT.
- LOADS:** TOP CHORD D.L. & L.L. = 30 P.S.F.  
 BOTTOM CHORD D.L. = 10 P.S.F.  
  
 TOTAL LOAD = 40 P.S.F.  
  
 LOADS SHOWN ARE AVERAGE. INCREASE OR DECREASE LOADS TO SUIT LOCAL CODES AND SOUND ENGINEERING PRACTICE.
- SPACING:** TRUSSES SHALL BE SPACED 2'-0" O.C. UNLESS OTHERWISE INDICATED.
- CEILING INSTALLATION :** INSTALL 1/2" GYPSUM BOARD PERPENDICULAR TO TRUSS DIRECTION. INSTALL 5/8" GYPSUM BOARD PERPENDICULAR TO TRUSS DIRECTION WHEN APPLYING WATER-BASED TEXTURED CEILING FINISH.

### GIRDER TRUSS

SCALE 3/4" = 1'-0"  
 TRUSS MFR. SHALL PROVIDE GIRDER TRUSS AND VALLEY SETS AS REQUIRED



TRUSS CONSTRUCTION  
 REVISED 11-04-09



# Standard Homes Plan Service, Inc.

7200 SUNSET LAKE ROAD FUQUAY-VARINA, NC 27526 (919)552-5677



DESIGNED FOR	PLAN	NO.	MAT'L	SHOWN	SHEET
	FINLAND	2	SID.		8 OF 8
					N.C.