

Revision to Permit Application – 40 Blairwood

Revision
Notes and
Plans

Jim at environmental requires the setback for the deck to be less than 5' from the screen room. The included revision to the original plans moves the outer beam footing to meet this requirement. 2 drawings are included to reflect this requirement, the main overall deck plan labeled "Revision A" and a detail of the footing location and cantilever labeled "Detail A"

The only change to the plan is the joist cantilever, footing location, and set max joist and beam span to 6' to accommodate the change in footing size.

The joist cantilever will be 10 ¾" with an adjacent joist span of 53 ¾"

The footing will be precast block 8" x 16" x 4" set at least 12" below grade, not to exceed 60" from N-E wall of existing screen room. Max Tributary area of the deck supports is 6' x 6'.

Once reviewed and approved by planning, please request review by Jim at environmental.

Thank you.

Jeff Fleming
Carolina Porch
919.525.4507

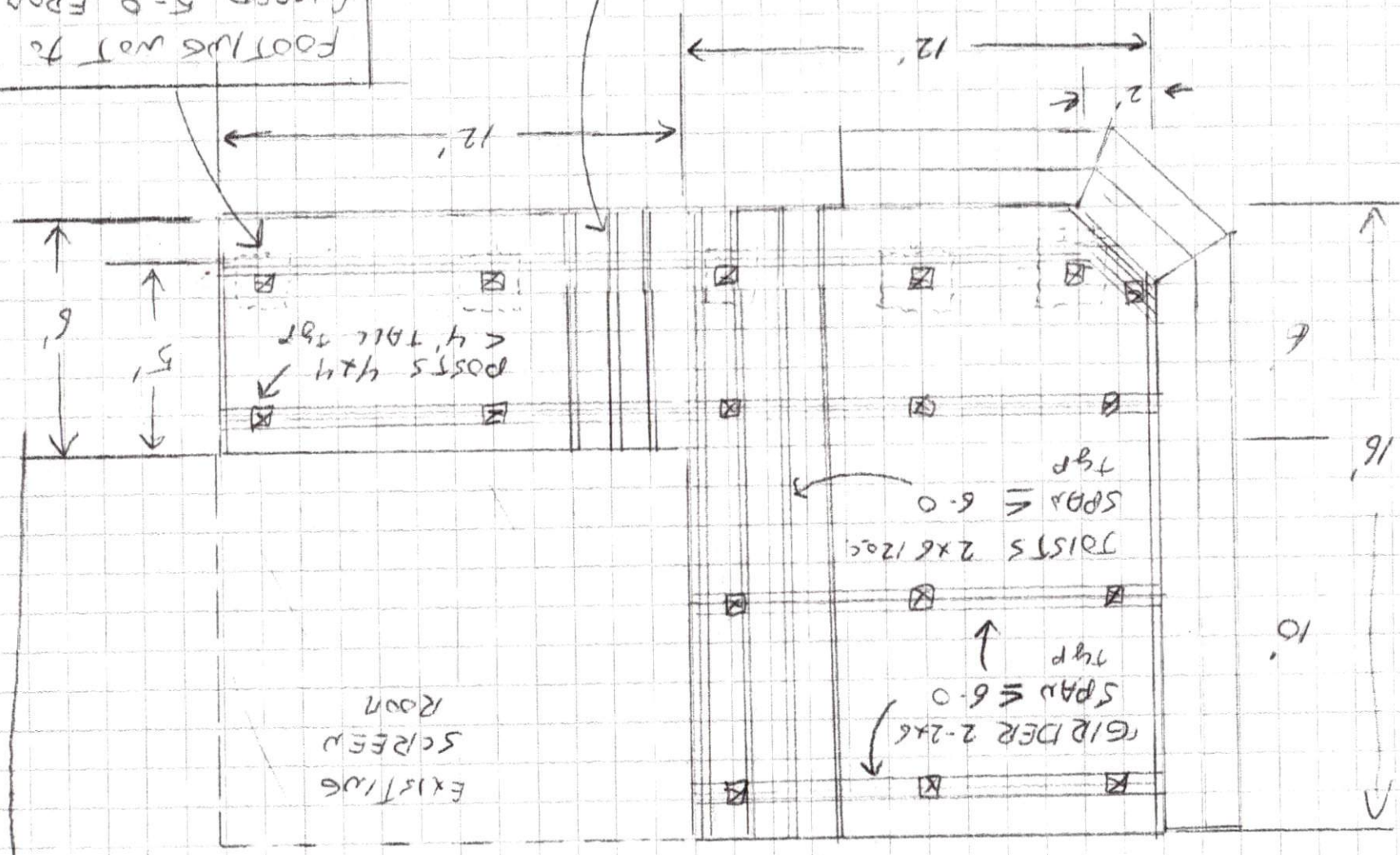
REVISION(A)

40 BLAIRWOOD DR

HOME

FOOTINGS NOT TO EXCEED 5'-0" FROM SCREEN PANEL N-L "DETAIL (A)" WALL - SEE PAGE

2x6 JOISTS CANTILER 18" SPAN BETWEEN BEAMS = 48"



40 BLAIRWOOD

- REVISION req'd → septic set back is 5' from N-E wall of existing screen room
- CHANGED FOOTING SIZE & LOCATION - to meet set back -

DETAIL (A)

